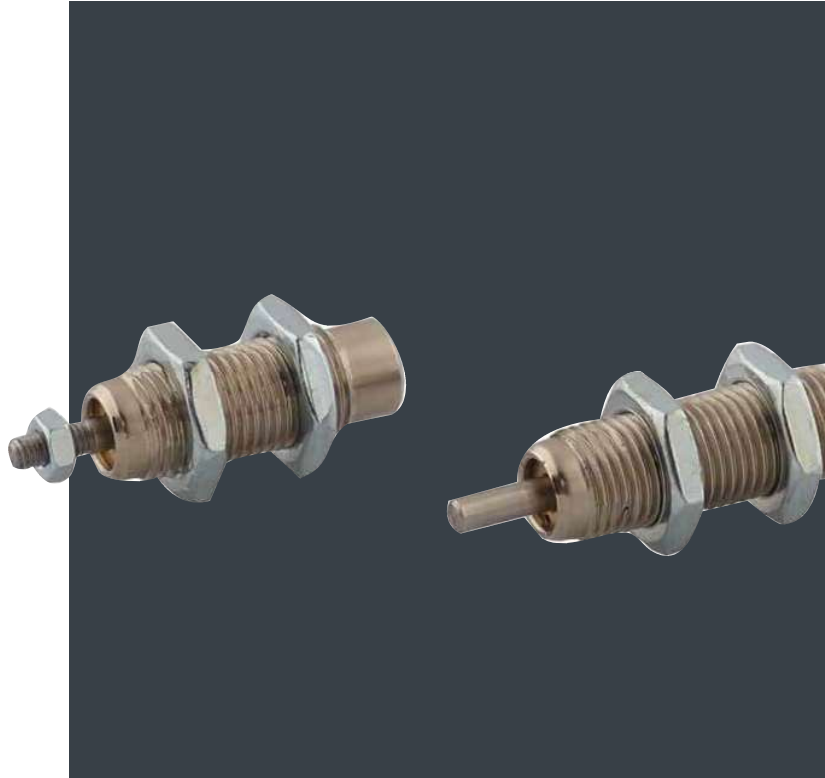


CARTRIDGE

Cylinders



Find out our
key products



Solution for most applications



Easy and intuitive choice



Excellent value for money



Wide availability



Fast delivery



Cartridge Cylinders

1 - CYLINDERS

Features and certifications

Series of cartridge cylinders, available in bores from Ø 6 to 16, single acting, with threaded body allowing a further adjustment of the end stroke position.
 Seal kit not available.
 Supplied as standard in compliance with Reach and RoHS directives.

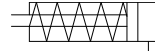


Type MCF Ø 6 ÷ 16

from page 1.55.20



Cartridge cylinders available in bores from Ø 6 to 16, single acting, with threaded body (allowing a further adjustment of the end stroke position) and threaded rod.

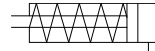


Type MCN Ø 6 ÷ 16

from page 1.55.20



Cartridge cylinders available in bores from Ø 6 to 16, single acting, with threaded body (allowing a further adjustment of the end stroke position) and non-threaded rod.

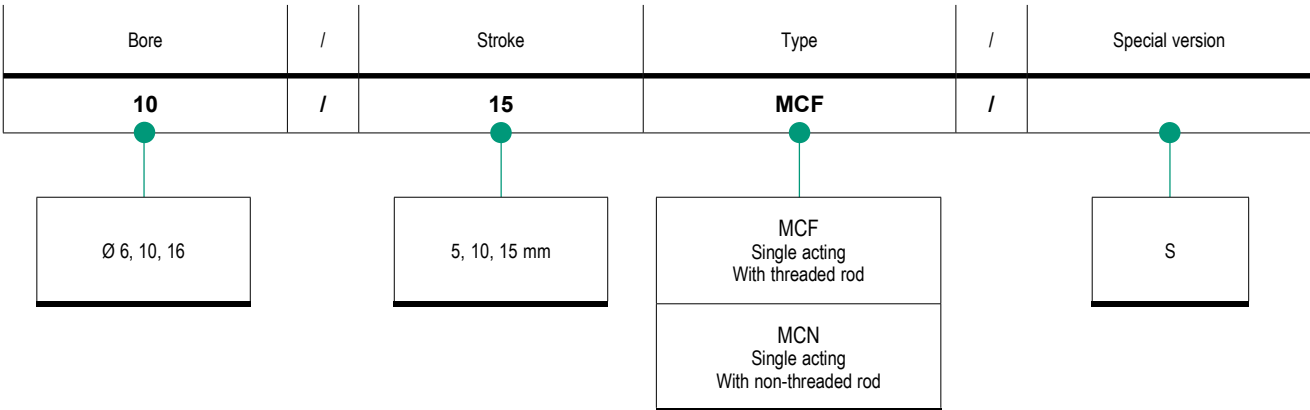


Cartridge Cylinders

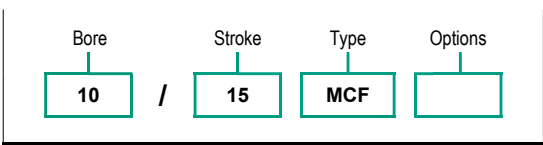
Options

| Description | Symbol | Suffix |
|-----------------------------|--------|-----------|
| Special versions on request | | /S |

Code key



How to order



Notes

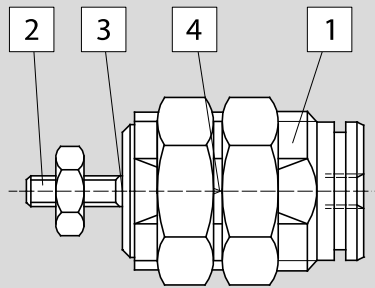
For further information on options and their matching, see tables above.

Cartridge Cylinders

1 - CYLINDERS

Standard materials

Type: **MCF, MCN**



| Position | Description | Materials |
|----------|-------------|--------------------------|
| 1 | Body | Nickel-plated brass |
| 2 | Rod | Stainless Steel AISI 303 |
| 3 | Seals | Polyurethane (PU) |
| 4 | Spring | Stainless Steel AISI 302 |

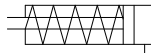
Cartridge Cylinders
Series MCF - MCN

1 - CYLINDERS

Main features

6 ÷ 16

Bores Ø



Single acting
With threaded rod

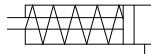
MCF

Type



6 ÷ 16

Bores Ø



Single acting
With non-threaded rod

MCN

Type



Technical data

| Bore Ø mm | 6 | 10 | 16 | |
|----------------------------|--------------------------------------------------------------------------------------------------|------|------|-----|
| Fluid | Filtered compressed air with or without lubrication. Lubrication, if started, must be continued. | | | |
| Pressure range | 2 ÷ 7 bar | | | |
| Temperature range | -20°C ÷ +80°C | | | |
| Strokes | 5 ÷ 15 mm | | | |
| Port | M5 | | | |
| Thrust force (Nm) at 6 bar | 14 | 42 | 109 | |
| Maximum side load (N) | 0,10 | 0,15 | 0,20 | |
| Traction force (N) | Stroke 5 | 1,4 | 3,9 | 9,9 |
| | Stroke 10 | 2 | 3,4 | 8,7 |
| | Stroke 15 | 1,5 | 2,9 | 7,4 |

Standard strokes

| Stroke mm | MCF Bore Ø mm | | |
|-----------|-------------------------|----|----|
| | 6 | 10 | 16 |
| 5 | | | |
| 10 | | | |
| 15 | | | |

| Stroke mm | MCN Bore Ø mm | | |
|-----------|-------------------------|----|----|
| | 6 | 10 | 16 |
| 5 | | | |
| 10 | | | |
| 15 | | | |

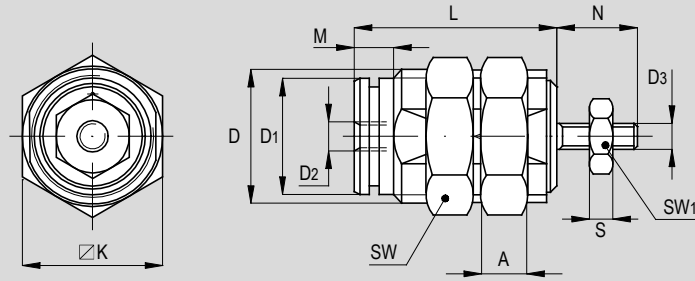
Key
 Standard stroke

Cartridge Cylinders
Series MCF - MCN

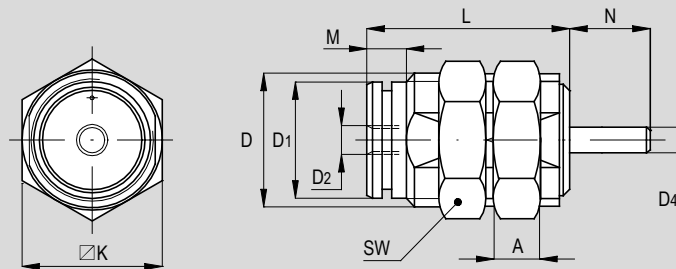
1 - CYLINDERS

Standard dimensions

Type: **MCF**



Type: **MCN**



| \varnothing (mm) | D | D1 | D2 | D3 | D4 | $\varnothing K$ | M | L | | | N | A | S | SW | SW1 |
|-----------------------|---------|-----|----|----|----|-----------------|---|----------|-----------|-----------|------|---|-----|----|-----|
| | | | | | | | | Stroke 5 | Stroke 10 | Stroke 15 | | | | | |
| 6 | M10x1 | 8,5 | M5 | M3 | 3 | 9 | 5 | 19,5 | 26,5 | 33,5 | 8 | 3 | 2,4 | 14 | 5,5 |
| 10 | M15x1,5 | 12 | M5 | M4 | 4 | 19 | 7 | 23 | 29,5 | 36,5 | 10,5 | 4 | 2 | 19 | 7 |
| 16 | M22x1,5 | 19 | M5 | M5 | 5 | 20 | 6 | 27 | 32 | 37 | 13 | 5 | 4 | 27 | 8 |