

AZL Series

Multistage Vacuum Pump



Features

- ◇ Adopt 3 levels rise pressure pipe, enhancing vacuum flow and saving air consumption.
- ◇ Optional solenoid valve and vacuum pressure switch.
- ◇ Internal vacuum filter and vacuum silencer. The filter element is replaceable.
- ◇ A variety of installation directions are available.

How to order

AZL 112- R - P - DVN

① ② ③ ④ ⑤

① Series	② Nozzle diameter	③ Exhaust specification
AZL	112 - 1 × φ1.2 mm 212 - 2 × φ1.2 mm	Nil - Standard, internal silencer R - Rc1/2, Port exhaust G - G1/2 Female thread, port exhaust

④ Control valve	⑤ Digital vacuum pressure switch
Nil - Without supply valve and release valve P - With supply valve A - With supply valve + release valve	Nil - Standard, without vacuum port NP - With vacuum port Rc1/8, without vacuum pressure switch DVN - Vacuum pressure switch (-100~0 kPa), 2NPN+V (1-5V) DVP - Vacuum pressure switch (-100~0 kPa), 2PNP+V (1-5V) DCN - Compound pressure switch (-100~100 kPa), 2NPN+V (1-5V) DCP - Compound pressure switch (-100~100 kPa), 2PNP+V (1-5V) (Refer to ZPDA Series on page 310-315.)

Selection

Model	Exhaust specification			Control valve			Pressure switch					
	Nil	R	G	Nil	P	A	Nil	NP	DVN	DVP	DCN	DCP
AZL112	●	○	○	●	○	●	●	●	●	●	○	○
AZL212	●	○	○	●	—	—	●	●	●	●	●	○

◇Note: "●"- standard, in stock. "○"-selective,no stock."—"-"-unavailable.

AZL Series

Multistage Vacuum Pump

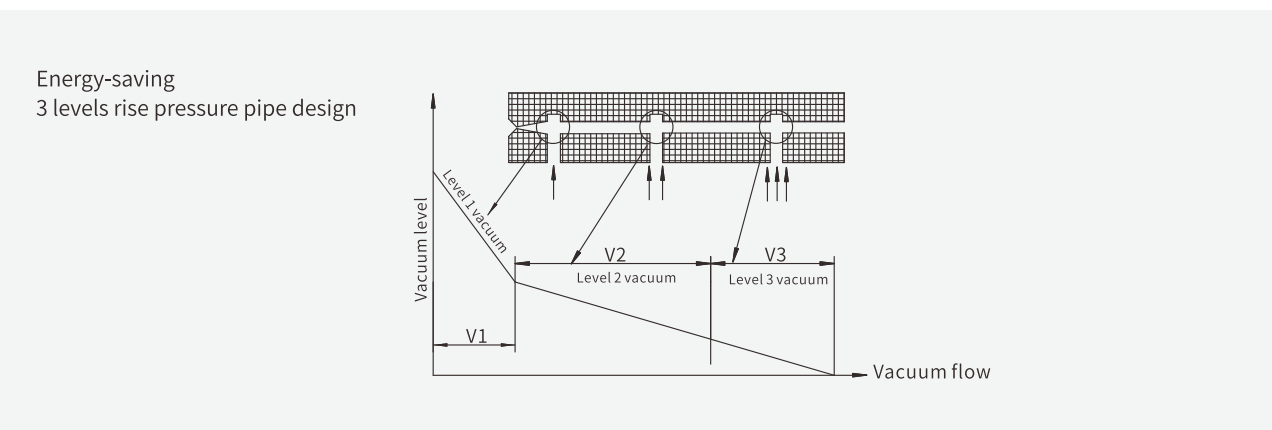
Technical parameters

Model	Air supply pressure (bar)	Max. vacuum level (-kPa)	Max. Vacuum flow (NL/min)	Air consumption (NL/min)	Operating temperature (°C)	Recommended hose dia. (mm)	
						Air supply(P)	Vacuum (V)
AZL112	4.0	84	100	63	5-50	6	12
AZL212	4.0	84	200	126	5-50	8	12

◇Note:Max. operating pressure 7bar,air supply pressure range 2-5bar.

Control valve specification

Type of actuation	Internal pilot type NC(normally closed)	Pilot exhaust type	Individual exhaust, concentrated exhaust
Operating pressure range	2~5bar	Lubrication	Not required
Rated voltage	24V	Mounting position	Unrestricted
Ambient and fluid temperature	5~50°C	Impact/Vibration resistance	150/30 m/s ²
Response time(at 0.5Mpa)	25ms or less	Enclosure	Dust-proof
Max. operating frequency	5Hz	Lead wire type	Direct lead out type, lead wire length 0.3m
Manual operation	Slotted locking type		



Vacuum flow (NL/min) at different vacuum levels (-kPa)

Model	Air supply pressure (bar)	Air consumption (NL/min)	Vacuum level (-kPa)										Max. vacuum level (-kPa)
			0	10	20	30	40	50	60	70	80		
AZL112	4.0	63	100	65	26	20	18.5	13	8	5	2.8	84	
AZL212	4.0	126	200	150	52	40	30	25	15	8	3	84	

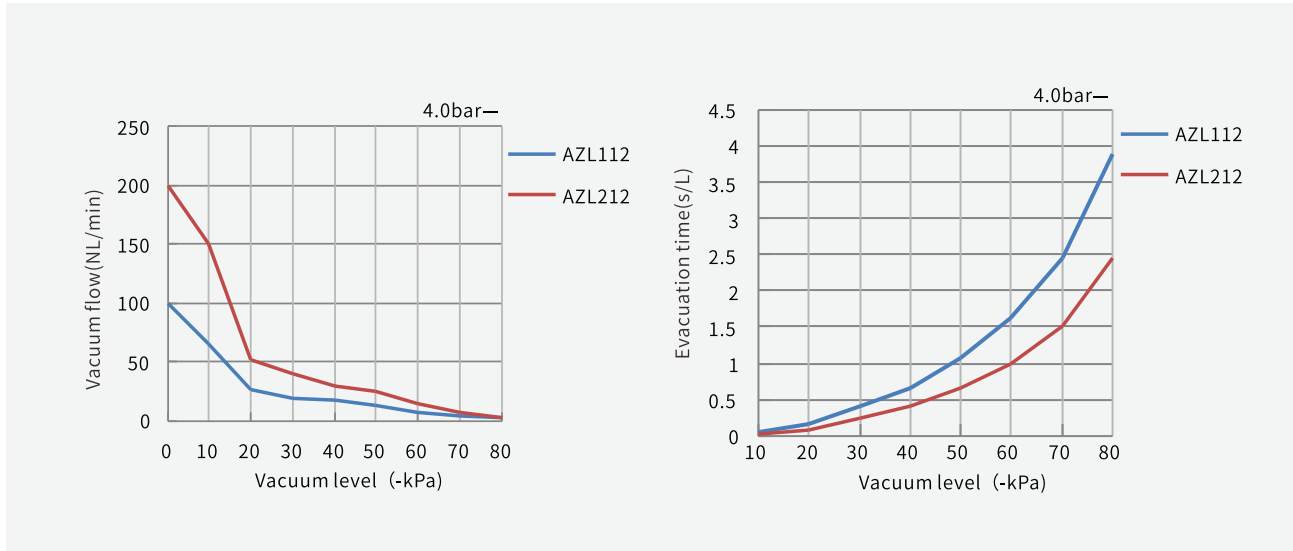
Evacuation time (s/L) to reach different vacuum levels (-kPa)

Model	Air supply pressure (bar)	Air consumption (NL/min)	Vacuum level (-kPa)										Max. vacuum level (-kPa)
			10	20	30	40	50	60	70	80			
AZL112	4.0	63	0.05	0.17	0.4	0.67	1.07	1.63	2.46	3.9	84		
AZL212	4.0	126	0.02	0.08	0.25	0.42	0.65	0.98	1.52	2.46	84		

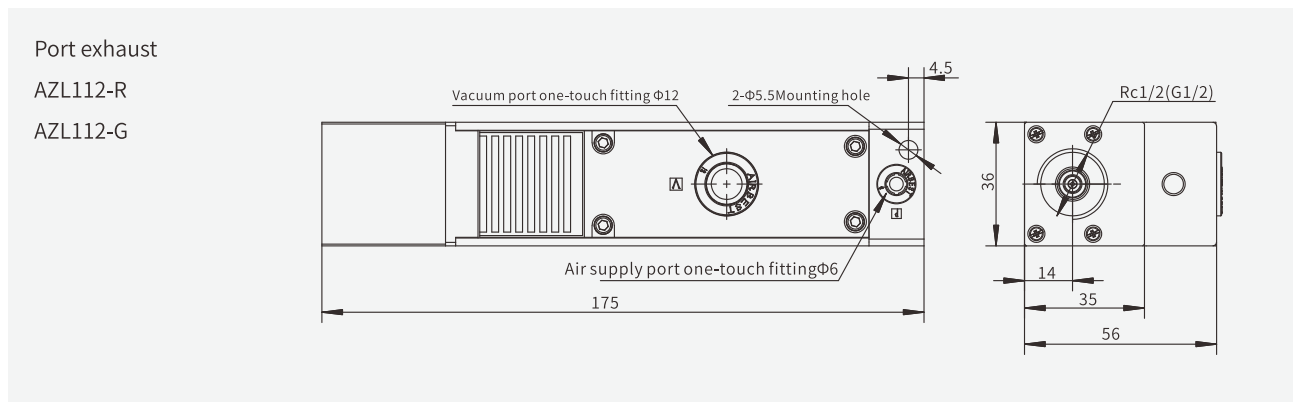
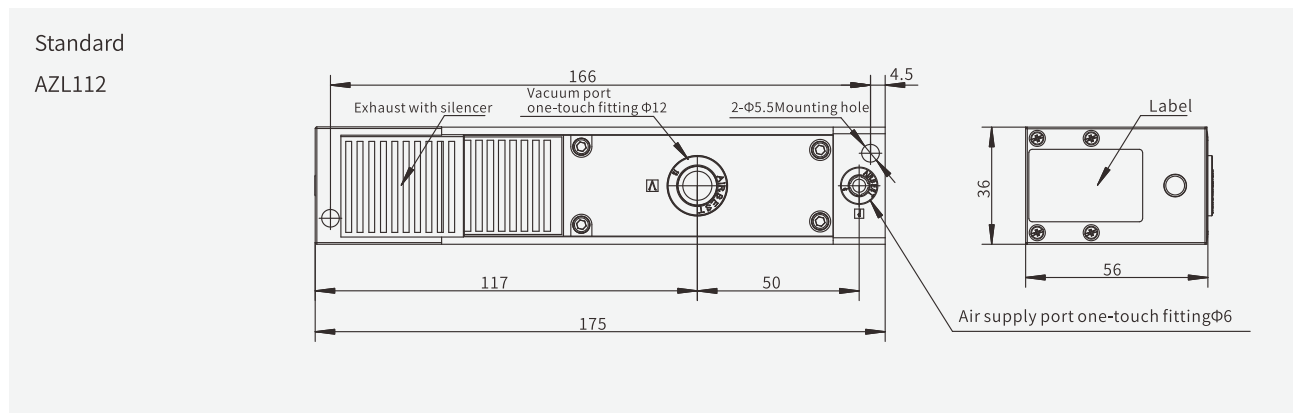
AZL Series

Multistage Vacuum Pump

Technical parameters



Dimensions (mm)



AZL Series

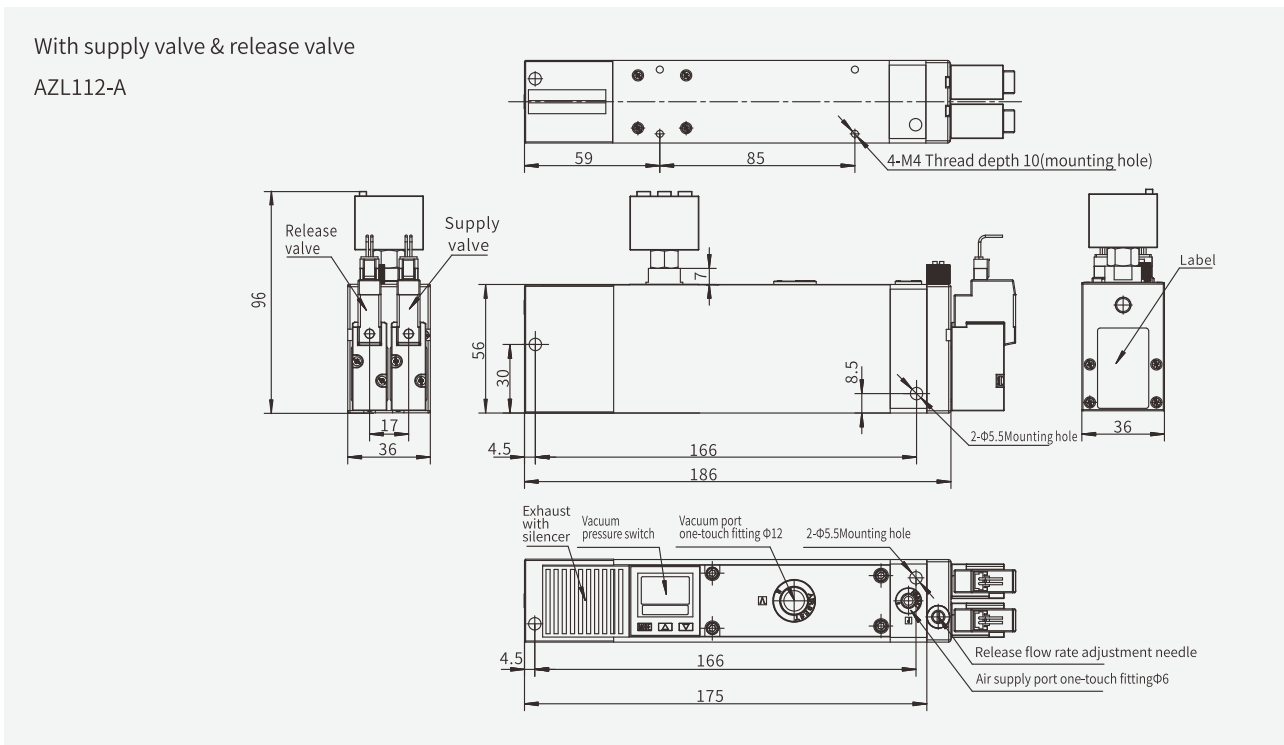
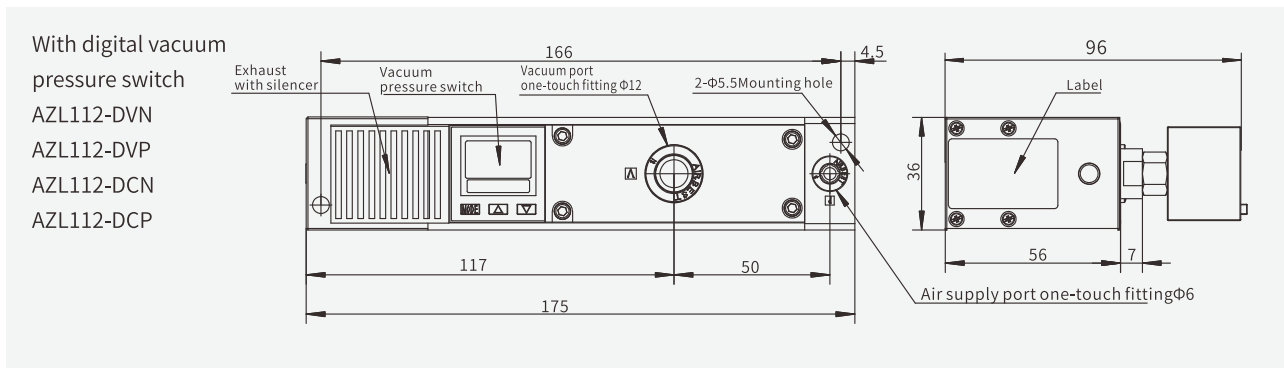
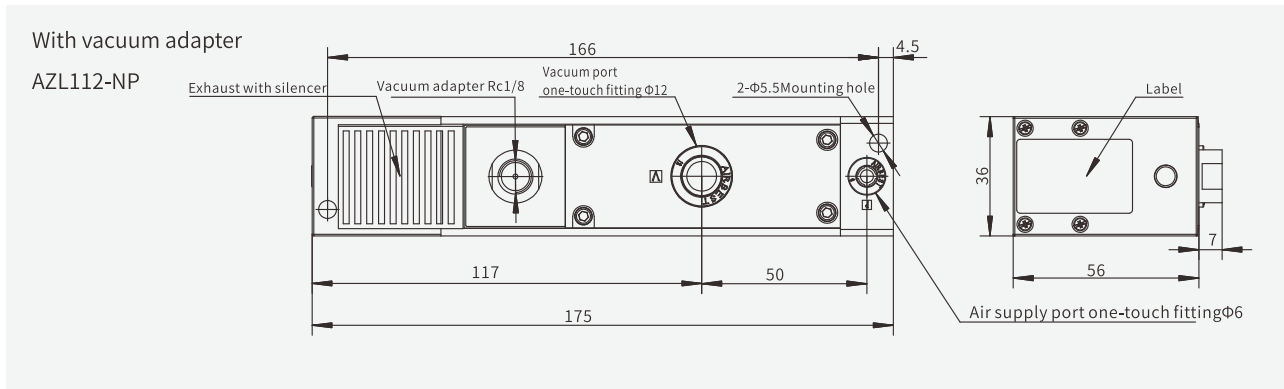
Multistage Vacuum Pump

ABM/ABX
 ABM/ABX Combined type
 ASM/ASX
 ASM/ASX Combined type
 AM/AL/AH
 AM/AL/AH Combined type

AZL

ACP
 ACPF
 ACPS
 ACV
 AQV
 AZH
 AZU
 ASBP

Dimensions (mm)



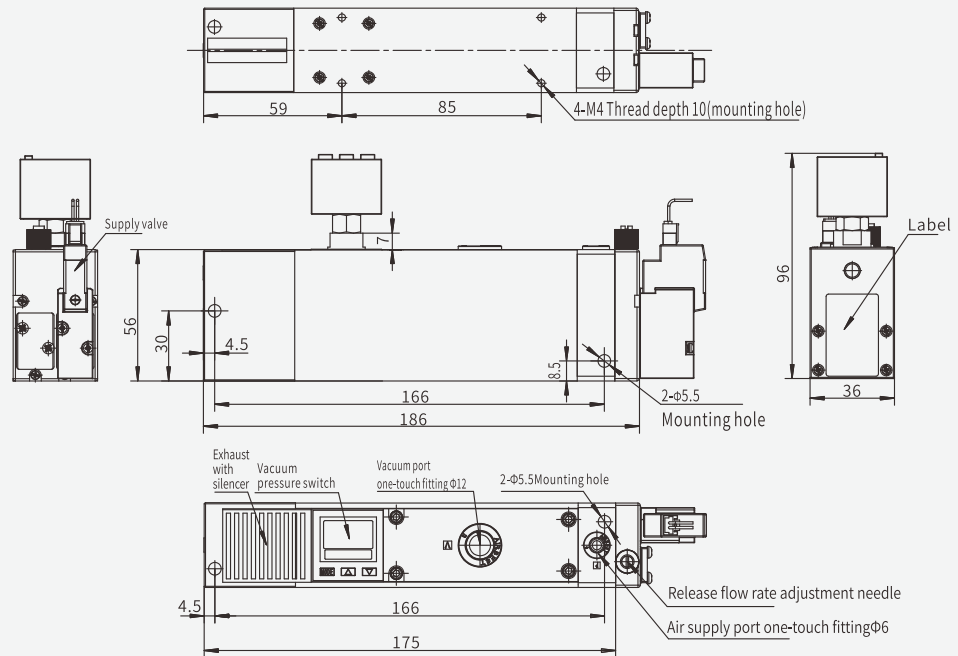
AZL Series

Multistage Vacuum Pump

Dimensions (mm)

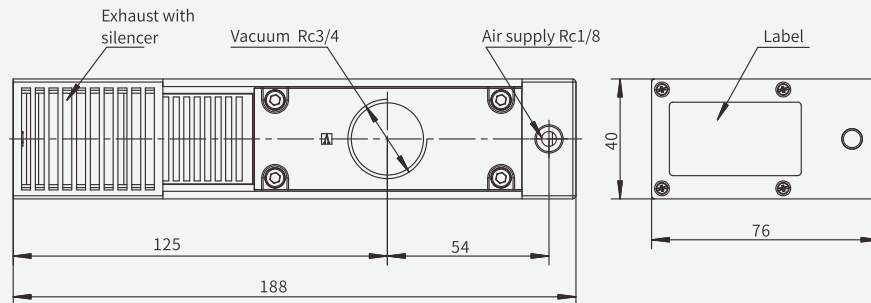
With supply valve

AZL112-P



Standard

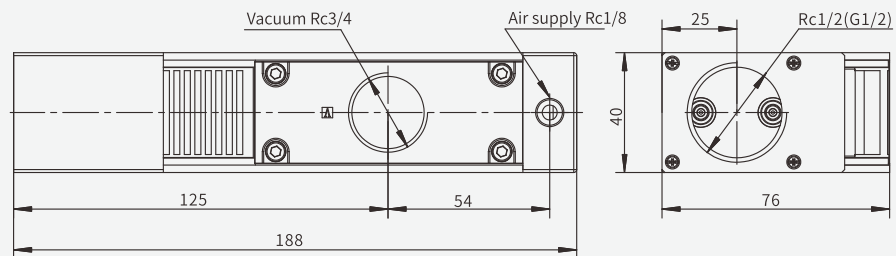
AZL212



Port exhaust

AZL212-R

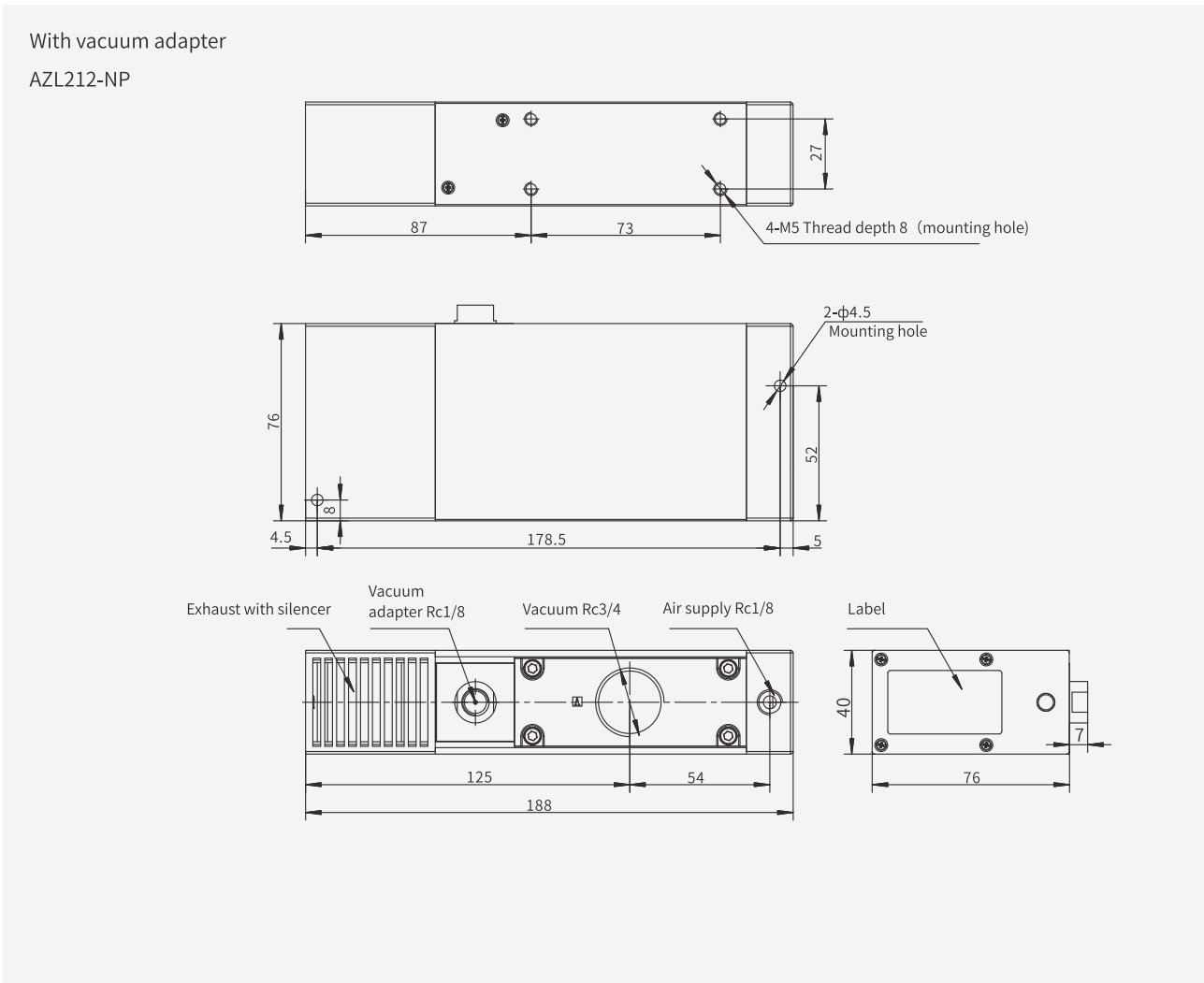
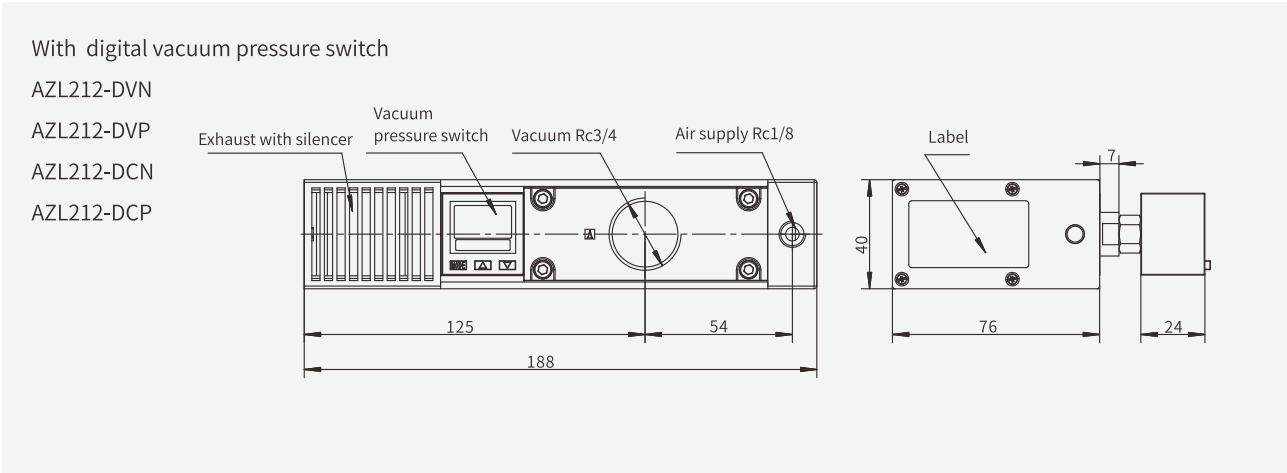
AZL212-G



AZL Series

Multistage Vacuum Pump

Dimensions (mm)



- ABM/ABX
- ABM/ABX Combined type
- ASM/ASX
- ASM/ASX Combined type
- AM/AL/AH
- AM/AL/AH Combined type

AZL

- ACP
- ACPF
- ACPS
- ACV
- AQV
- AZH
- AZU
- ASBP