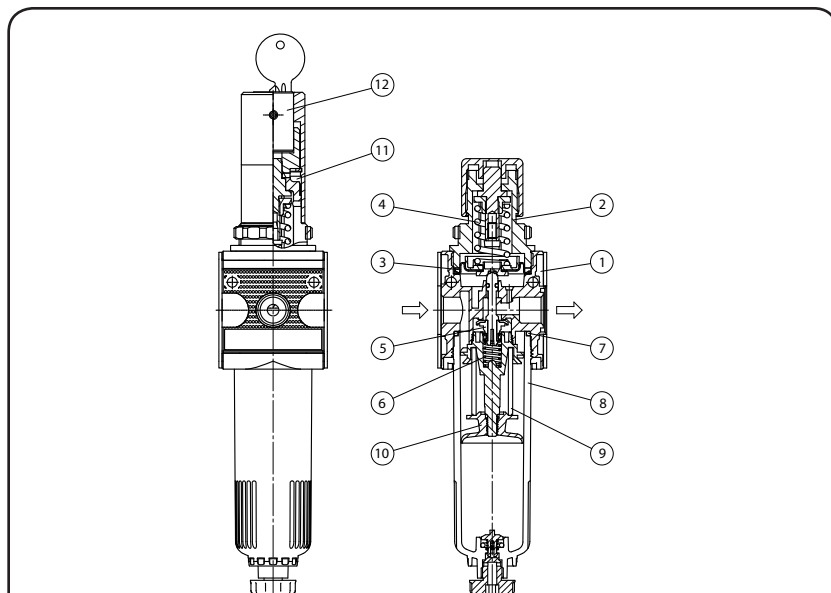


Filter-regulator

MULTI-FIX SERIES

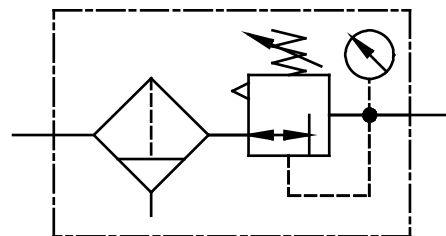
type	C.11	C.12	
item			
port size	G 1/4	G 3/8	
description	air line regulator with diaphragm and relieving feature, centrifugal force principle with sintered filter		
mounting	vertically, drain plug at bottom		
supply pressure	Pe max. 16 bar Pe min. 1,5 bar		
reduced pressure	Pa 0,5-10 bar standard, 0,1-3 bar, 0,2-6 bar, 0,5-16 bar		
filter element	5 µm standard, (absolutely)		
media and ambient temperature	max. 60°C (oth. temperature ranges available upon request)		
bowl volume	max. 25 cm³ condensation volume		
drain model	semi drain standard		
fixing	panel mounting, bracket or through 2 holes in the body		
weight	0,477 kg,(0,392 kg without gauge) 0,592 kg with lock device		



replacement parts

(repair kit: ESA-R/C.11)

no	description	material	order-no.
1	body	Z 410	---
2	spring cage C.00-72	POM - brass	8.2100.72.000
3	diaphragm assembly	NBR - brass	
4	regulating spring 0-10 bar	St. - galvanized	5.2111.83.000
5	valve cone	NBR - brass	
6	spring C.11-87	stainless steel	5.2111.87.000
7	O-ring 30 x 2	NBR	
8	bowl	polycarbonate	8.2111.84.000
9	filter element 5 µm C.00-26	cellpor	5.2100.26.000
10	baffle plate	PA	3.2111.70.000
11	spring cage lockable	POM - Al	8.2111.72.001
12	lock cylinder C.33-52	brass	5.2133.52.000



series 1

ordering information

C. ** * *
 type reduced pressure
 1 port size 2 option

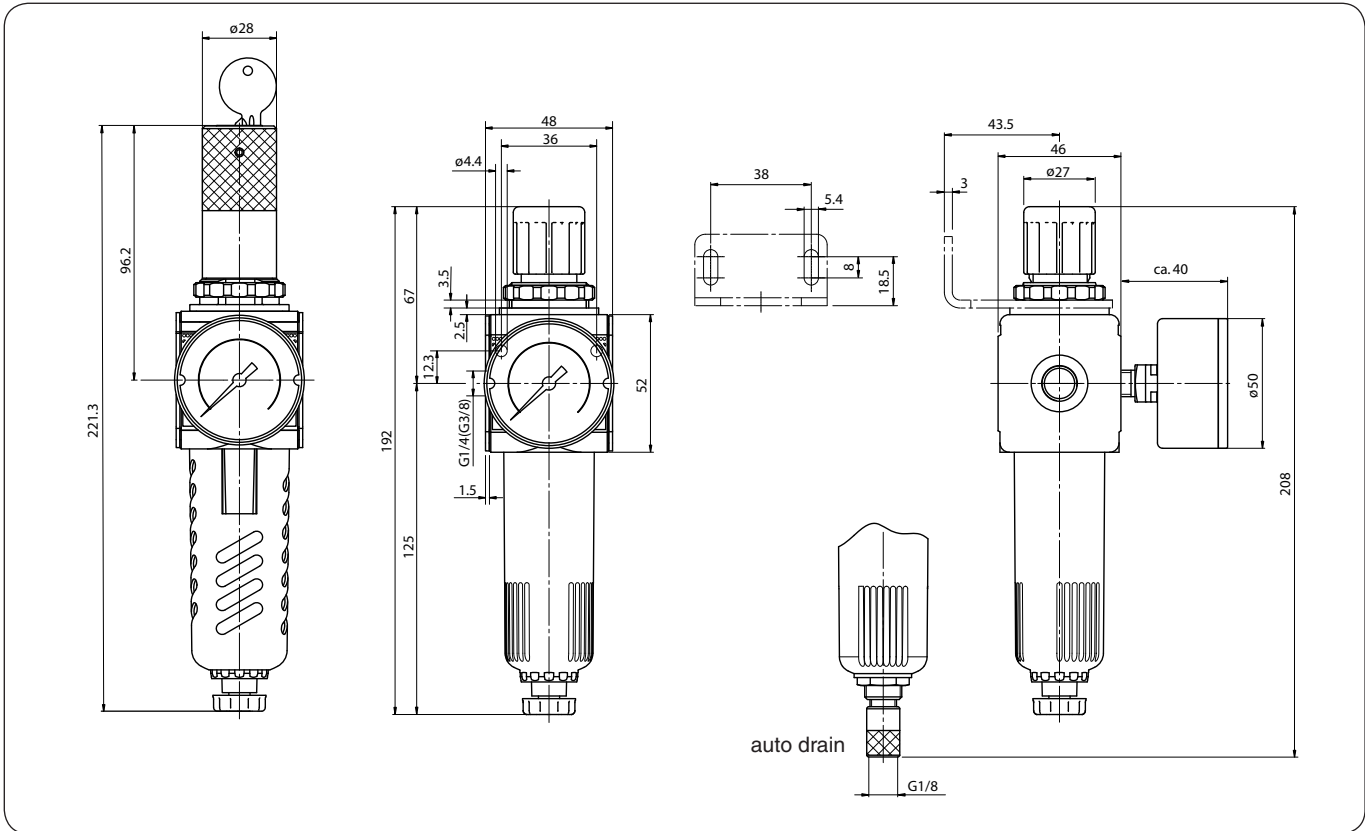
ordering example: C.11 S B AM 0,1-3

port size	
1	11 G 1/4
	12 G 3/8
options	
2	G gauge ø50
	S panel mounting
	K keylock
	B bowl guard
	H metal bowl with sight glass
	AM auto drain

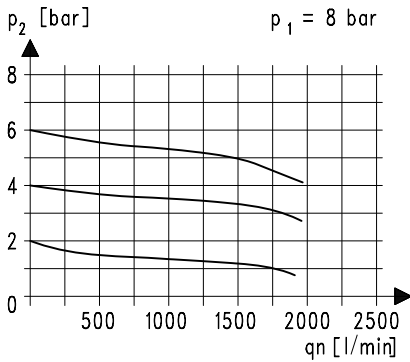
application information

- easy block assembly for components to be connected in series
- interlocking of several individual devices requires coupling kit(s) KP.11
- interlocking of several individual devices with narrow distributor Z.11 requires coupling kit(s) KP.11 Z
- adjusting knob can be locked by depressing
- filter transmittance according to ISO 4003, bubble point test
- field installation of bowl guard without tools

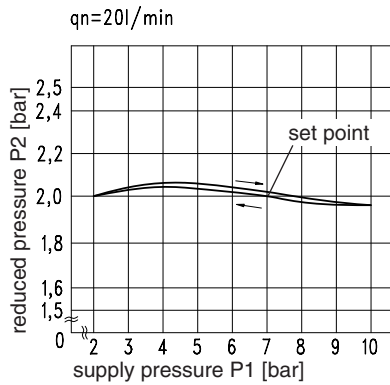
dimensions (mm)



flow characteristics

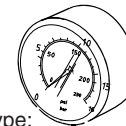


pressure characteristic



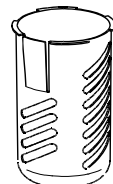
accessories

gauge



type:
G 50.6 R
G 50.10 R
G 50.16 R
G 50.25 R

bowl guard



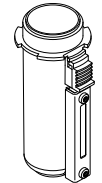
type: C.11-45

panel mounting ring M 30 x 1,5



type: DR.00-34

metal bowl with sight glass



type: C.11 H

mounting bracket

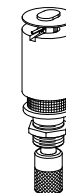


type: ZW.11



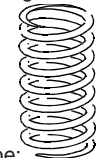
type: MW.30

auto drain



type: AM 10

spring



type:
0,1- 3: C.11-81
0,2- 6: C.11-82
0,5-16: C.11-66