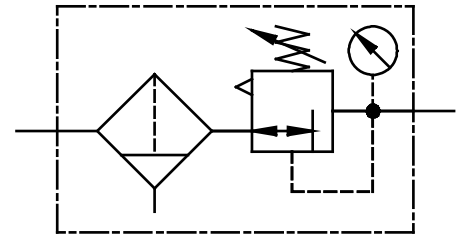
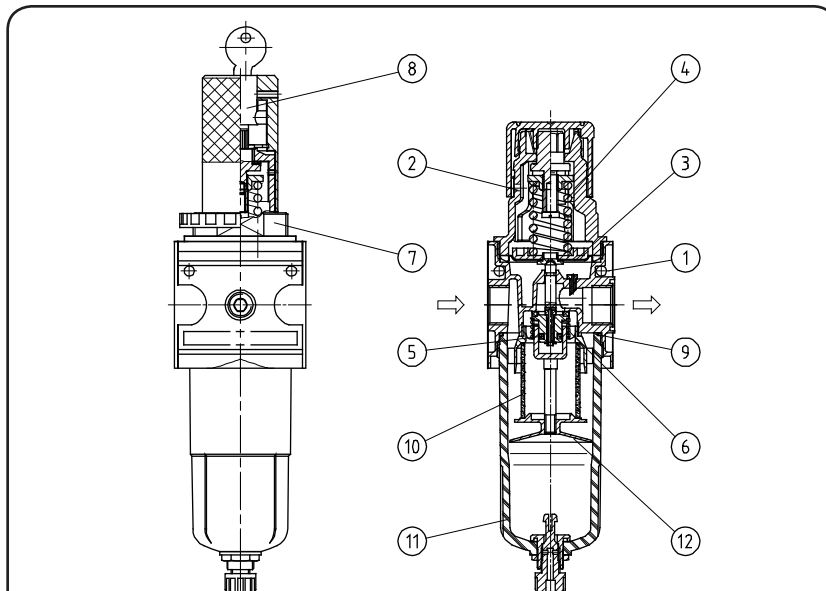


Filter-regulator

MULTI-FIX SERIES

type	C.33	C.34	
item			
port size	G 1/2	G 3/4	
description	air line regulator with diaphragm and relieving feature, centrifugal force principle with sintered filter		
mounting	vertically, drain plug at bottom		
media	compressed air, neutral gases		
supply pressure	Pe max. 16 bar Pe min. 1,5 bar with semi- and auto drain		
reduced pressure	Pa 0,5-10 bar standard, 0,1-3 bar, 0,2-6 bar, 0,5-16 bar		
filter element	5 µm standard (absolutely)		
media and ambient temperature	max. 60°C (oth. temperature ranges available upon request)		
bowl volume	max. 50 cm³ condensation volume		
drain model	manual drain standard		
fixing	panel mounting, bracket or through 2 holes in the body		
weight	1,076kg,(0,991kg without gauge) 1,185kg with lock device		



technical modifications keep in reserve!

replacement parts

(repair kit: ESA-R/C.33)

no	description	material	order-no.
1	body	Z 410	---
2	spring cage C.33-77	POM	8.2133.77.000
3	diaphragm assembly	NBR - Ms	
4	regulating spring 0-10 bar	St. - galvanized	5.2133.08.000
5	valve cone	NBR - Ms	
6	spring C.33-22	stainless steel	5.2133.22.000
7	spring cage lockable	POM - Al	8.2133.72.001
8	lock cylinder C.33-52	Ms	5.2133.52.000
9	O-ring 50 x 2	NBR	
10	filter element 5 µm C.33-62	cellpor	5.2133.62.000
11	bowl C.33 man	polycarbonate	8.2133.76.000
12	baffle plate	PA	3.2133.31.000

series 3

ordering information

C. ** * *
 type reduced pressure
 1 port size 2 option

ordering example: C.33 G S B AM 0,1-3

port size	
1	33 G 1/2
	34 G 3/4
options	
2	G gauge ø50
	S panel mounting
	K keylock
	B bowl guard
	H metal bowl with sight glass
	HA semi drain
	AM auto drain

application information

- easy block assembly for components to be connected in series
- interlocking of several individual devices requires coupling kit(s) KP.33
- interlocking of several individual devices with narrow distributor Z.33 requires coupling kit(s) KP.33 Z
- adjusting knob can be locked by depressing
- filter transmittance according to ISO 4003, bubble point test
- field installation of bowl guard without tools

page: C.33 (08/08)

