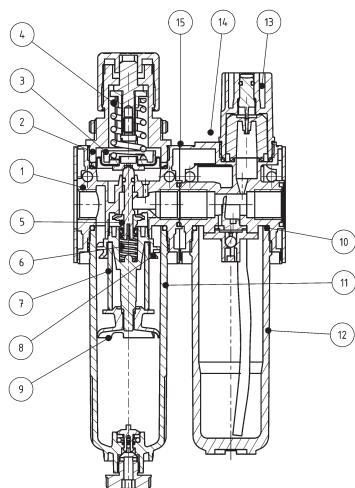


Service unit 2 part assemblies

MULTI-FIX SERIES

type	CL.11	CL.12	
item			
port size	G 1/4	G 3/8	
description	air line regulator with diaphragm and relieving feature, centrifugal force principle with sintered filter, propor. oiler		
mounting	vertically, drain plug at bottom		
supply pressure	Pe max. 16 bar; Pe min. 1,5 bar		
reduced pressure	Pa 0,5-10 bar standard, 0,1-3 bar, 0,2-6 bar, 0,5-16 bar		
filter element	5 µm standard (absolutely)		
media and ambient temperature	max. 60°C (oth. temperature ranges available upon request)		
bowl volume	max. 25 cm³ condensation volume, 50 cm³ oil bowl		
drain model	semi drain standard		
oil dosage rage when qv = 1000 l/min	1-2 drops/min (determining factor)		
kind of oil	CL 32 standardized to DIN 51517 - ISO VG 32		
fixing	panel mounting, bracket or through 2 holes in the body		
weight	0,850 kg		



replacement parts

(repair kit: ESA-R/C.11)

no	description	material	order-no.
1	body	zinc - Z 410	---
2	spring cage C.00-72	POM - Ms	8.2100.72.000
3	diaphragm assembly	NBR - Ms	
4	reg. spring 0-10 bar C.11-83	St. - galvanized	5.2111.83.000
5	valve cone	NBR - Ms	
6	spring C.11-87	stainless steel	5.2111.87.000
7	filter element 5 µm C.00-26	cellpor	5.2100.26.000
8	twist plate C.11-12	POM	3.2111.12.000
9	baffle plate C.11-70	PA	3.2111.70.000
10	O-ring 30 x 2	NBR	
11	bowl C.11 HA	polycarbonate	8.2111.84.000
12	oil bowl L.11	polycarbonate	8.2511.09.000
13	dome assembly L.33	PA	9.9933.00.006
14	oil filler screw L.11-8	POM - NBR	7.2511.08.000
15	connecting kit KP.11	Z 410-St-NBR	9.9911.00.000

application information

- adjusting knob can be locked by depressing
- filter transmittance according to ISO 4003, glass bead test
- oil fill in is possible under pressure
- field installation of bowl guard without tools

series 1

ordering information

CL. ** * *
 type reduced pressure
 1 port size 2 option

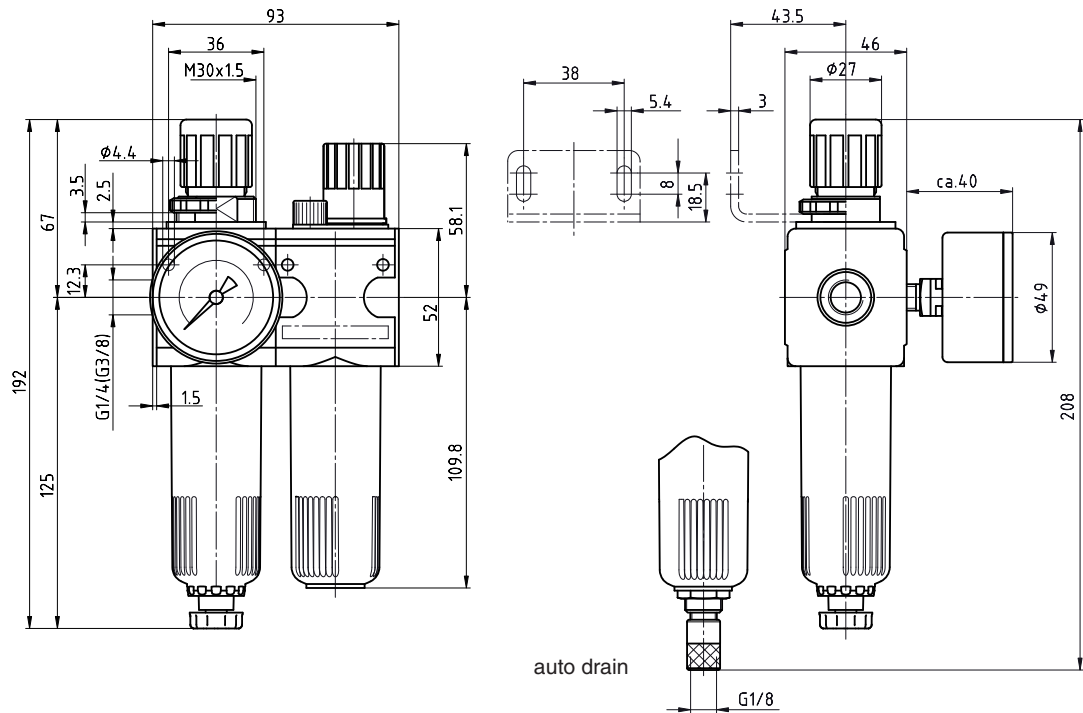
ordering example: CL.11 S K AM 0,1-3

port size	
1	11 G 1/4
	12 G 3/8
options	
2	G gauge ø50
	S panel mounting
	K keylock
	B bowl guard
	H metal bowl with sight glass
	AM auto drain
	N electrical level control

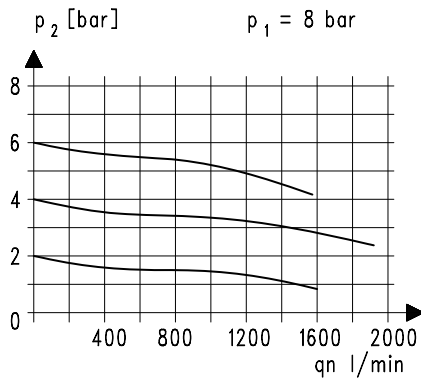
technical modifications keep in reserve!

page: CL.11 (09/08)

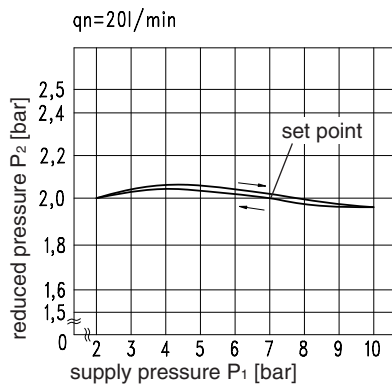
dimensions (mm)



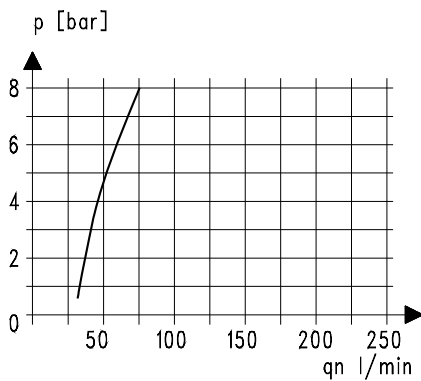
flow characteristics



pressure characteristic

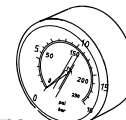


lubricator operating limit



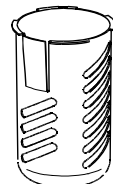
accessories

gauge



type:
G 50. 6 R
G 50.10 R
G 50.16 R
G 50.25 R

bowl guard



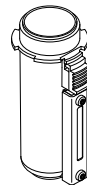
type: C.11-45

panel mounting ring M 30 x 1,5



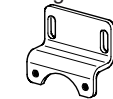
type: DR.00-34

metal bowl with sight glass



type: C.11 H

mounting bracket

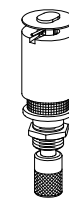


type: ZW.11



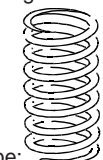
type: MW.30

auto drain



type: AM 10

spring



type:
0,1- 3: C.11-81
0,2- 6: C.11-82
0,5-16: C.11-66