

Service unit 3 part assemblies

MULTI-FIX SERIES

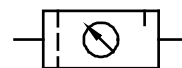
item	type	FRL.33	FRL.34
port size		G 1/2	G 3/4
description		air line regulator with diaphragm and relieving feature, centrifugal force principle with sintered filter, propor. oiler	
mounting		vertically, drain plug at bottom	
media		compressed air, neutral gases	
supply pressure		Pe max. 16 bar Pe min. 1,5 bar with semi- and fully automatic drain	
reduced pressure		Pa 0,5-10 bar standard, 0,1-3 bar, 0,2-6 bar, 0,5-16 bar	
filter element		5 µm standard (absolutely)	
media and ambient temperature		max. 60°C (oth. temperature ranges available upon request)	
bowl volume		max. 50 cm³ contensation volume, 125 cm³ oil bowl	
drain model		manual drain standard	
oil dosage rage when qv = 1000 l/min		1-2 drops/min (determining factor)	
kind of oil		CL 32 standardized to DIN 51517 - ISO VG 32	
fixing		panel mounting; bracket or through 2 holes in the body	
weight		2,370 kg	



technical modifications keep in reserve!

replacement parts ✎ (repair kit: ESA-R/C.33)

no	description	material	order-no.
1	body	Z 410	---
2	spring cage C.33-77	POM - Ms	8.2133.77.000
3	diaphragm assembly	NBR - Ms	
4	reg. spring 0-10 bar C.33-8	St. - galvanized	5.2133.08.000
5	valve cone	NBR - Ms	
6	spring C.33-22	stainless steel	5.2133.22.000
7	O-ring 50 x 2	NBR	
8	filter element 5 µm C.33-62	cellpor	5.2133.62.000
9	bowl C.33 man	polycarbonate	8.2133.76.000
10	oil bowl L.33	polycarbonate	8.2533.09.000
11	dome assembly L.33	PA	9.9933.00.006
12	oil filler screw L.33-8	POM - NBR	7.2533.08.000
13	twist plate C.33-25	POM	3.2133.25.000
14	affle plate C.33-31	PA	3.2133.31.000
15	connecting kit KP.33	Z 410 - St - NBR	9.9933.00.000



series 3

ordering information

FRL. ** * *

type reduced pressure

1 port size 2 option

ordering example: FRL.33 S K AM N 0,1-3

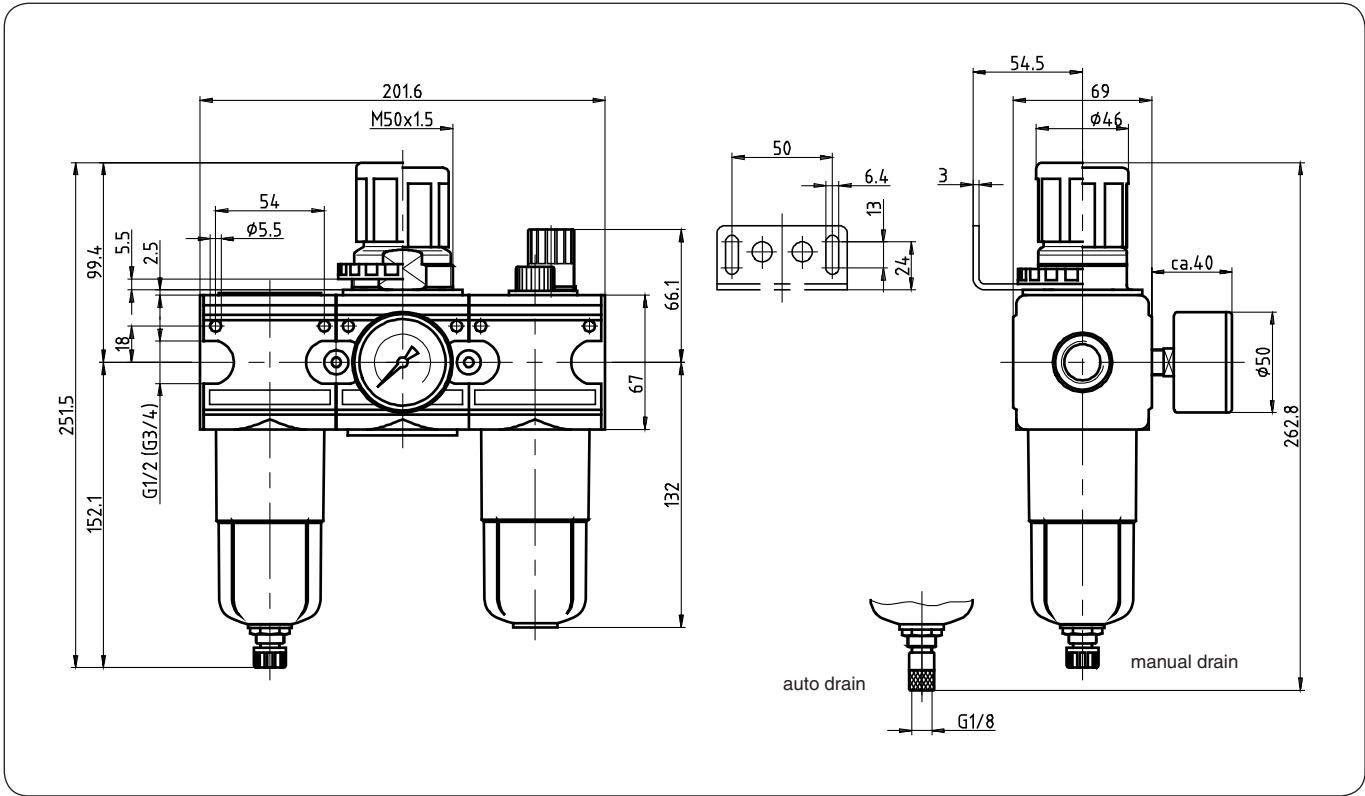
port size	
1	33 G 1/2
	34 G 3/4
options	
2	G gauge ø50
	S panel mounting
	K keylock
	B bowl guard
	H metal bowl with sight glass
	HA semi drain
	AM auto drain
N electrical level control	

application information

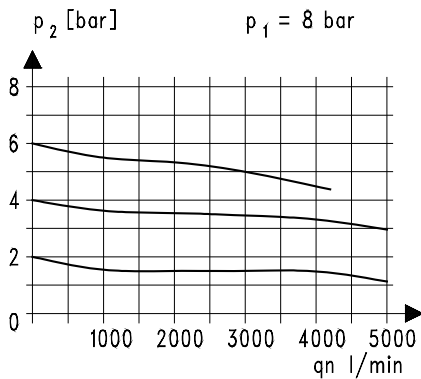
- adjusting knob can be locked by depressing
- filter transmittance according to ISO 4003, glass bead test
- oil fill in is possible under pressure
- field installation of bowl guard without tools

page: FRL.33 (08/08)

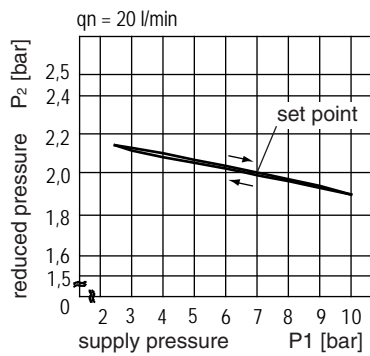
dimensions (mm)



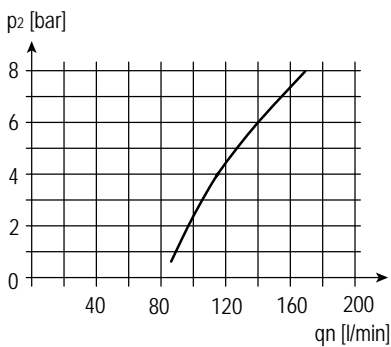
flow characteristics



pressure characteristic



lubricator operating limit



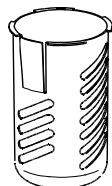
accessories

gauge



type:
G 50.6 R
G 50.10 R
G 50.16 R
G 50.25 R

bowl guard



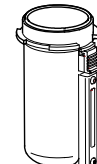
type: C.33-45

panel mounting ring M 50 x 1,5



type: C.33-42

metal bowl with sight glass

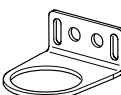


type: C.33 H
L.33 H

mounting bracket



type: ZW.33



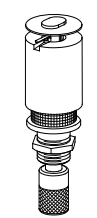
type: MW.50

spring



type:
0,1- 3: C.33- 6
0,2- 6: C.33- 7
0,5-16: C.33-66

auto drain



type: AM 10