

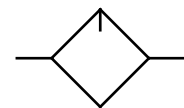
Typ	KLUB-238	KLUB-212
<b>Kenngroßen</b>		
port size	G 3/8	G 1/2
description	lubricator with automatic oil filling	
medium	compressed air, neutral gases	
mounting	vertical	
medium- and ambient temperature	max. 50 °C	
supply pressure	Pe max. 16 bar	
bowl volume	oil quantity max.	
oil metering qv=1000l/min	1 - 2 drops/min	
oil type	CL 32 DIN 51517 - ISO VG 32	
fixing	mounting bracket, wall mounting	
weight	0,285 kg	



Technical modifications keep on reserve!

**parts**

no.	designation		material	order-no.
1	bowl	BE.2 LUB	polycarbonate	90002.0202
2	dome assembly	ESA-1-1312	polycarbonate	99901.1312
3	o-ring 37,5 x 2,5	OR.0-5	NBR	10020.0005



**series 2**

ordering information

**KLUB - \*\*\* \***

type

port size  accessories

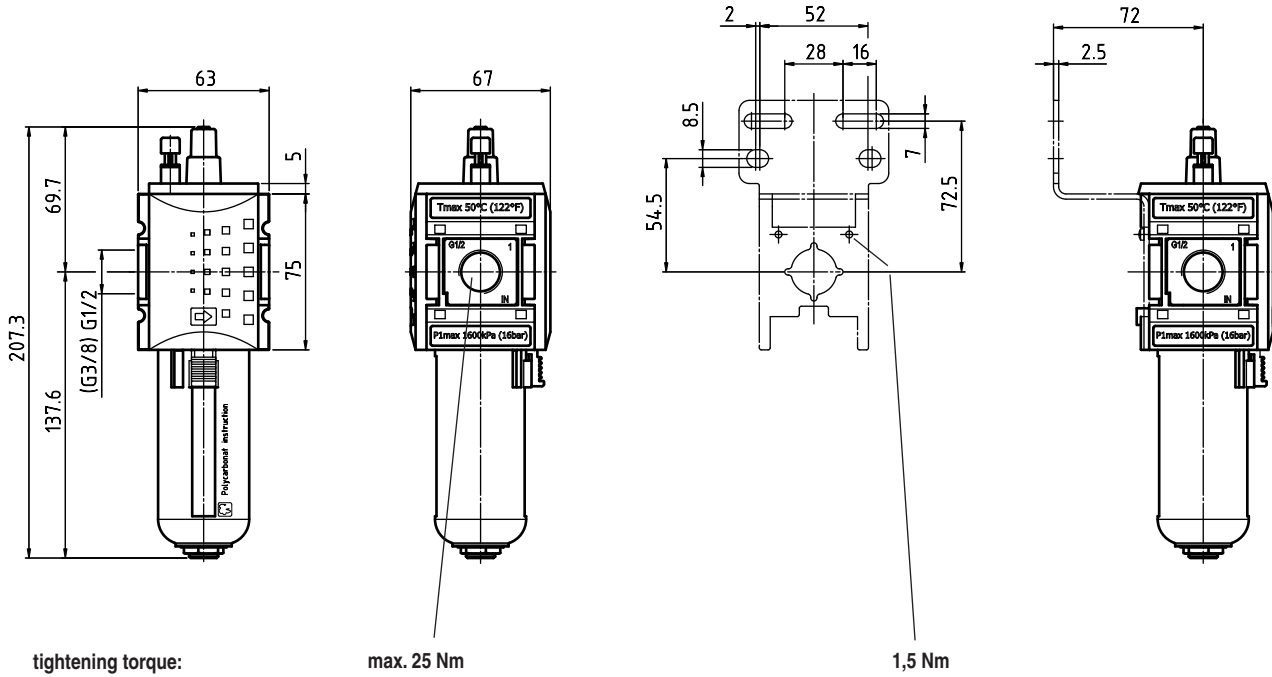
ordering example: KLUB-212

1 port size	
238	G 3/8
212	G 1/2
238 NPT	3/8-18 NPT
212 NPT	1/2-14 NPT
2 accessories (see reverse side)	
H	metal bowl with level indicator
N	electrical level indicator

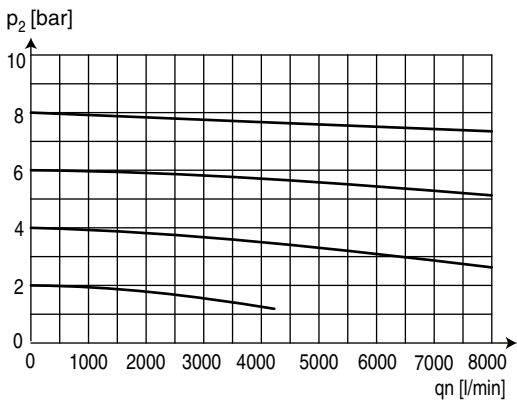
**application information**

- Can be filled with oil during operation
- Interlocking of several individual devices requires coupling kit(s) KKOP.2

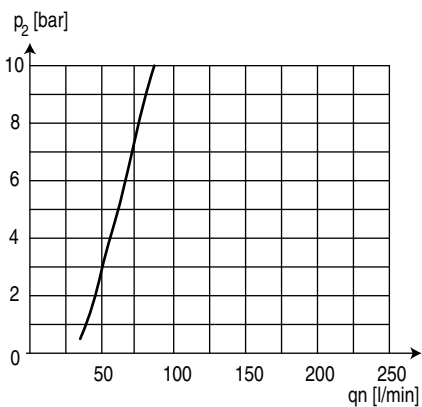
## dimensions (mm)



## pressure characteristic

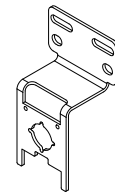


## lubricator operating limit



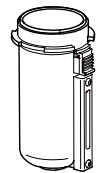
## accessories 2

mounting bracket with screws



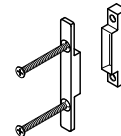
type: KBW.2-1225

metal bowl with level indicator



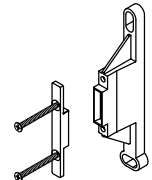
type: BE.2 H LUB

coupling kit



type: KKOP.2

coupling kit wall mounting



type: KKOP.2W