

MULTI-FIX

Service 2 unit | BG5

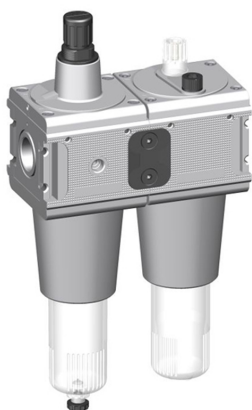


Image shows:
9.2854.00.294

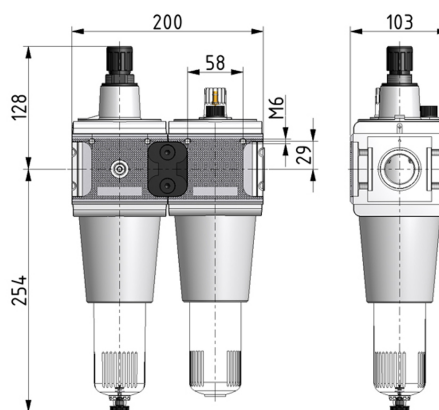
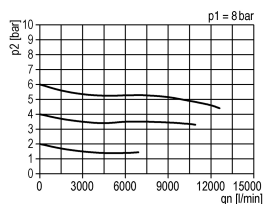
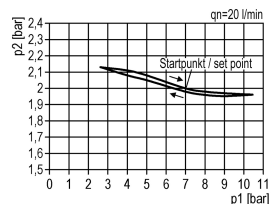


Image shows:
9.2854.00.294

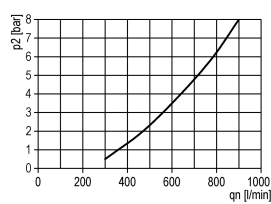
flow characteristic



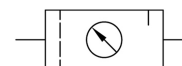
pressure characteristic



lubricator operating limit



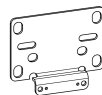
symbol



technical data

- **description:** sinter filter centrifugal principle, pilot controlled diaphragm-type pressure with relieving feature, proportional oiler
- **medium:** compressed air, neutral gases
- **supply pressure P1 min.:** 1,5 bar
- **supply pressure P1 max.:** 16 bar
- **temperature range:** 0 - 60°C
- **bowl:** PC
- **drain:** HA
- **mounting:** vertical
- **filter element:** 40 µm
- **bowl volume lubricator:** 550 cm³
- **oil metering qv=1.000l/min:** 1 - 2 drops/min
- **oil type:** CL 32 DIN 51517 - ISO VG 32

accessories



- mounting bracket: [ZW.55](#)
- lockable setting knob possible
- electrical level indicator (version addition: N)

Service 3 unit

Service 2 unit

Filter regulator

Filter

Pressure regulator

Lubricator

System extensions

Accessories

Special products

type	part-number	description
CL.54 HA4	9.2854.00.294	Service 2 unit G3/4 0,5-10 40µm with PC bowl and semi automatic drain
CL.54 H HA3	9.2854.00.297	Service 2 unit G3/4 0,5-10 40µm with metal bowl/visual display and semi automatic drain
CL.54 HA4 B	9.2854.00.298	Service 2 unit G3/4 0,5-10 40µm with PC bowl, bowl guard and semi automatic drain
CL.54 AM10	9.2854.00.300	Service 2 unit G3/4 0,5-10 40µm with PC bowl and automatic drain
CL.54 H AM10	9.2854.00.303	Service 2 unit G3/4 0,5-10 40µm with metal bowl/visual display and automatic drain
CL.54 AM10 B	9.2854.00.304	Service 2 unit G3/4 0,5-10 40µm with PC bowl, bowl guard and automatic drain
CL.55 HA4	9.2855.00.294	Service 2 unit G1 0,5-10 40µm with PC bowl and semi automatic drain
CL.55 H HA3	9.2855.00.297	Service 2 unit G1 0,5-10 40µm with metal bowl/visual display and semi automatic drain
CL.55 HA4 B	9.2855.00.298	Service 2 unit G1 0,5-10 40µm with PC bowl, bowl guard and semi automatic drain
CL.55 AM10	9.2855.00.300	Service 2 unit G1 0,5-10 40µm with PC bowl and automatic drain
CL.55 H AM10	9.2855.00.303	Service 2 unit G1 0,5-10 40µm with metal bowl/visual display and automatic drain
CL.55 AM10 B	9.2855.00.304	Service 2 unit G1 0,5-10 40µm with PC bowl, bowl guard and automatic drain

- Service 3 unit
- Service 2 unit
- Filter regulator
- Filter
- Pressure regulator
- Lubricator
- System extensions
- Accessories
- Special products