

Precision regulator

FUTURA-SERIES

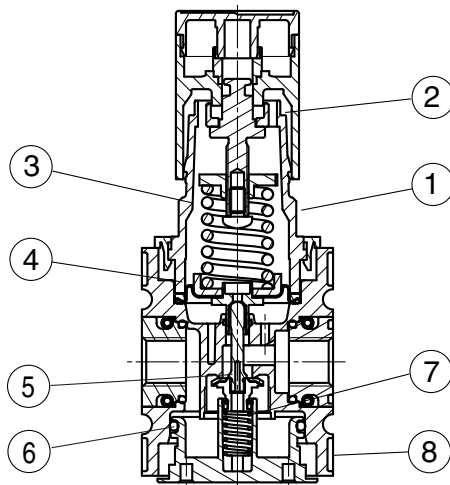
item	type	KPRG-238/*	KPRG-212/*
port size		G 3/8	G 1/2
description		diaphragm-type pressure regulator with secondary air exhaust	
medium		compressed air, neutral gases	
mounting		arbitrary	
medium- and ambient temperature		max. 50 °C	
supply pressure		Pe max. 16 bar	
reduced pressure 3		0,5-8 bar standard 0,1-1 bar, 0,1-2 bar, 0,2-4 bar, 0,5-10 bar, 0,5-16 bar	
local air consumption		2,6 l/min at P2 = 6 bar	
fixing		control panel installation, mounting bracket, wall mounting	
weight		0,540 kg	

Innovation 2008!



material: Grivory (PA66) / IXEF1022

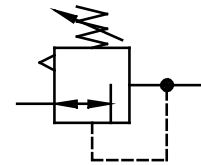
Technical modifications keep on reserve!



parts

(Service-Kit: ESA.2-1310)

no.	designation		material	order-no.
1	spring cage	FH.2-600	POM	---
2	setting knob	FH.2-625	POM	---
3	spring	FED.2-703	galvanised steel	---
4	diaphragm	C.22-75	brass-NBR-PA6	
5	valve cone	VK.2-422	brass-NBR	
6	o-ring 37,5x2,5	OR.0-5	NBR	
7	spring	FED.2-720	stainless steel	---
8	cover	DE.2-300	POM	---



series 2

ordering information

KPRG - * / * ***

type

1 port size

2 accessories

3 reduced pressure

ordering example: KPRG-212/8 G

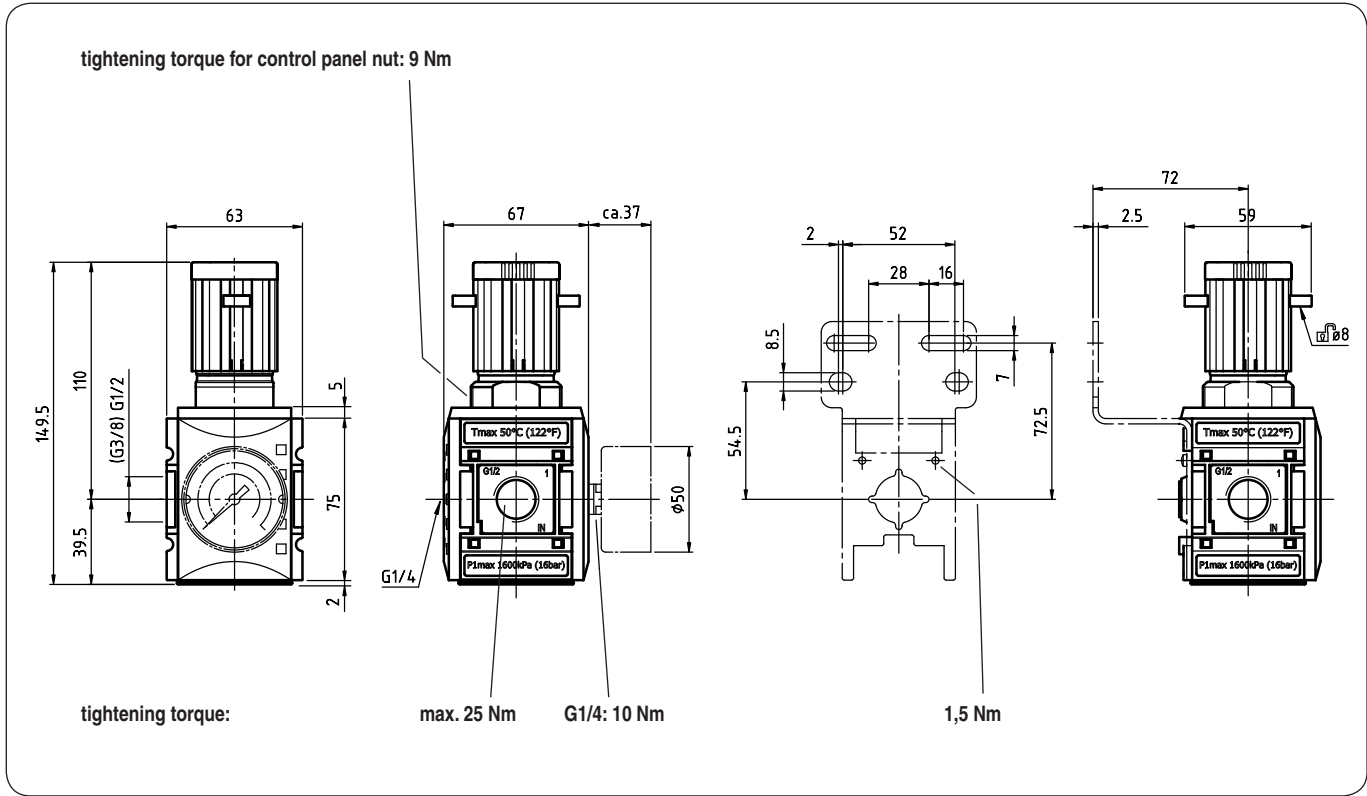
1	port size	
	238	G 3/8
	212	G 1/2
	2N38	3/8-18 NPTF
	2N12	1/2-14 NPTF
2	accessories (see reverse side)	
	S	control panel nut
	G	gauge ø50
3	reduced pressure (see item table)	
	e.g. 8	0,5 - 8 bar

page: KPRG-2 (03/08)

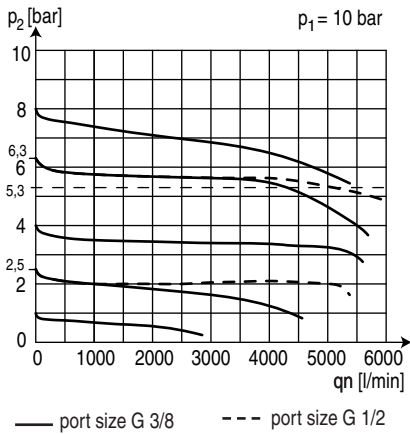
application information

- Setting knob can be locked by pressing downwards
- Regulator head lockable
- interlocking of several individual devices requires coupling kit(s) KOP.2

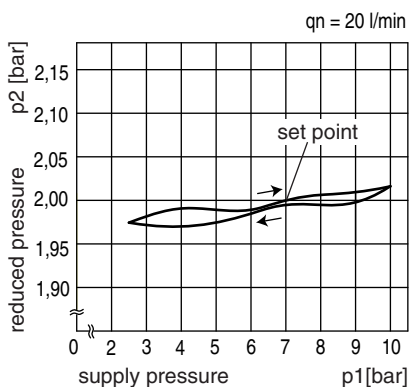
dimensions (mm)



flow characteristic

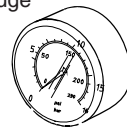


pressure characteristic



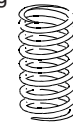
accessories 3

gauge



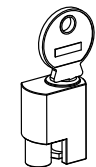
type: G 50.2,5 R
G 50.4 R
G 50.6 R
G 50.10 R
G 50.16 R
G 50.25 R

spring



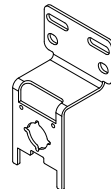
type:
0,1- 1: FED.2-700
0,1- 2: FED.2-701
0,2- 4: FED.2-702
0,5- 8: FED.2-703
0,5-10: FED.2-704
0,5-16: FED.2-705

rotary lock



type:
VH.32 with key
VH.31 without key

mounting bracket with screws



type: BW.2-1225

mounting bracket for panel mounting



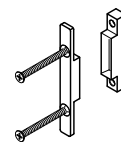
type: BW.2-1227

control panel nut M 36 x 1,5



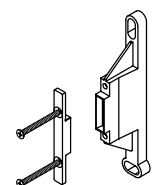
type: SM.2

coupling kit



type: KOP.2

coupling kit wall mounting



type: KOP.2W