

Regulator with continuous pressure supply **FUTURA-SERIES**

item	type	KRBE-114/* G	KRBE-138/* G
port size		G 1/4	G 3/8
description		diaphragm-type pressure regulator with secondary air exhaust	
medium		compressed air, neutral gases	
mounting		arbitrary	
medium- and ambient temperature		max. 50 °C	
supply pressure		Pe max. 16 bar	
reduced pressure 2		0,5-8 bar standard 0,1-1 bar, 0,1-2 bar, 0,2-4 bar, 0,5-10 bar, 0,5-16 bar	
fixing		control panel installation, mounting bracket, wall mounting	
weight		0,292 kg	



Technical modifications keep on reserve!

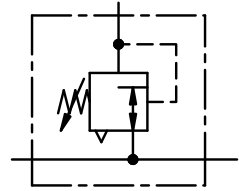
parts 👉 (Service-Kit: ESA.1-1311)

no.	designation		material	order-no.
1	spring cage	BG1	POM	---
2	setting knob	FH.1-625	POM	---
3	spring	FED.1-703	galvanised steel	---
4	diaphragm	MEM.1	brass-NBR-PA6	ES
5	valve cone	C.11-79	brass-NBR	ES
6	o-ring 32 x 2,5	OR.0-1	NBR	ES
7	spring	FED.1-720	stainless steel	---
8	cover	DE.1-300	POM	---

page: KRBE-1 (03/08)

application information

- Setting knob can be locked by pressing downwards
- Regulator head lockable
- interlocking of several individual devices requires coupling kit(s) KOP.1



series 1

ordering information

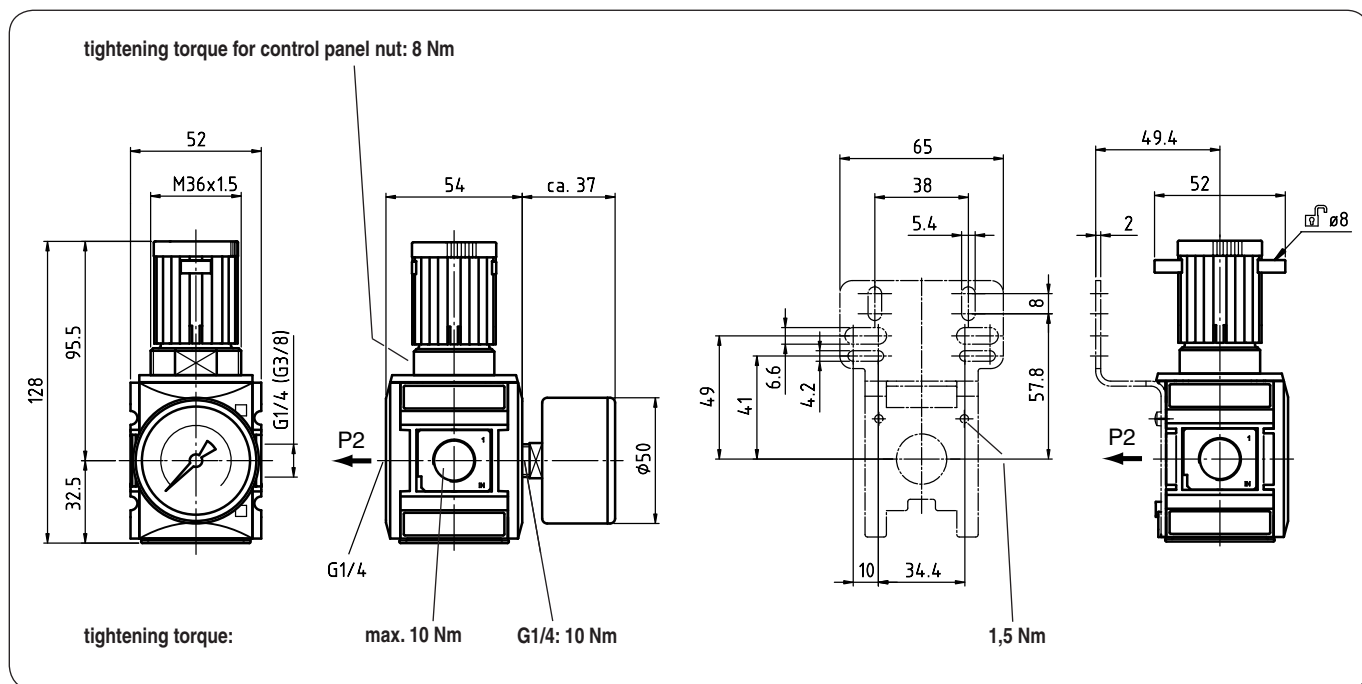
KRBE - * / * ***

type		3 accessories	2 reduced pressure
1 port size			

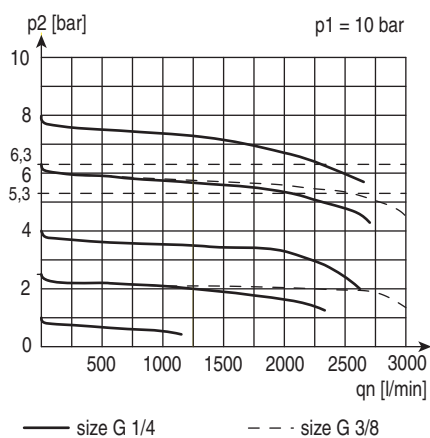
ordering example: KRBE-138/8 G

1	port size	
		114 G 1/4
		138 G 3/8
		1N14 1/4-18 NPTF
		1N38 3/8-18 NPTF
2	reduced pressure (see item table)	
	e.g. 8	0,5 - 8 bar
3	accessories (see reverse side)	
	S	control panel nut

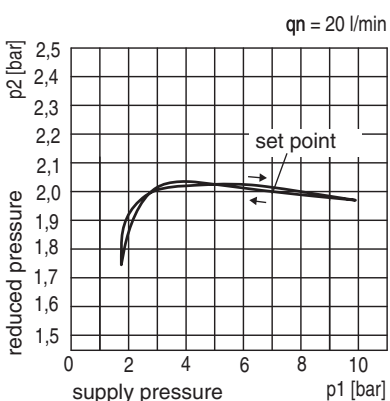
dimensions (mm)



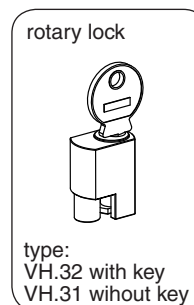
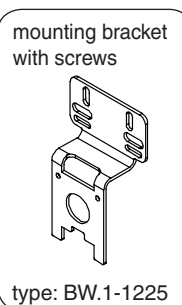
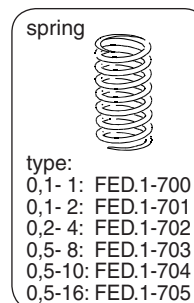
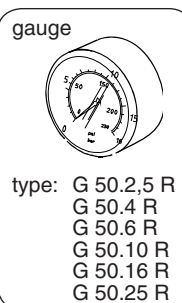
flow characteristic



pressure characteristic



accessories 3



area of application

