

**Regulator with continuous pressure supply**

**FUTURA-SERIES**

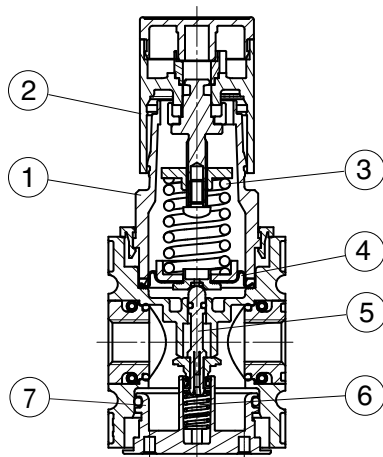
item	type	KRBE-238/* G	KRBE-212/* G
port size		G 3/8	G 1/2
description		diaphragm-type pressure regulator with secondary air exhaust	
medium		compressed air, neutral gases	
mounting		arbitrary	
medium- and ambient temperature		max. 50 °C	
supply pressure		Pe max. 16 bar	
reduced pressure <span style="border: 1px solid black; padding: 0 2px;">2</span>		0,5-8 bar standard 0,1-1 bar, 0,1-2 bar, 0,2-4 bar, 0,5-10 bar, 0,5-16 bar	
fixing		control panel installation, mounting bracket, wall mounting	
weight		0,540 kg	

**Innovation 2008 !**



material: Grivory (PA66) / IXEF1022

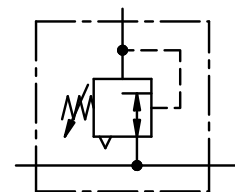
Technical modifications keep on reserve!



**parts**

(Service-Kit: ESA.2-1311)

no.	designation		material	order-no.
1	spring cage	FH.2-600	POM	---
2	setting knob	FH.2-625	POM	---
3	spring	FED.2-703	galvanised steel	---
4	diaphragm	C.22-75	brass-NBR-PA6	
5	valve cone	VK.2-420	brass-NBR	
6	o-ring 37,5 x 2,5	OR.0-5	NBR	
7	spring	FED.2-720	stainless steel	---
8	cover	DE.2-300	POM	---



**series 2**

**ordering information**

**KRBE - \*\*\* / \* \***

type

1 port size

3 accessories

2 reduced pressure

ordering example: KRBE-212/8 G

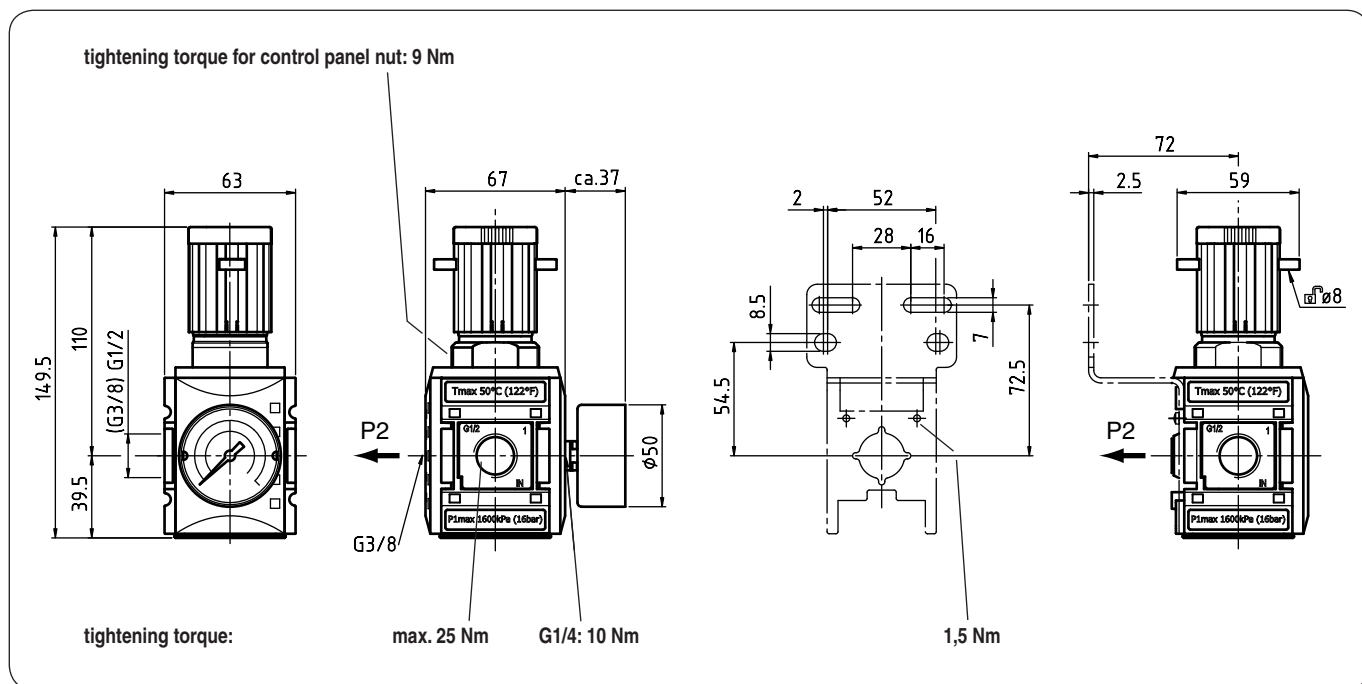
page: KRBE-2 (03/08)

**application information**

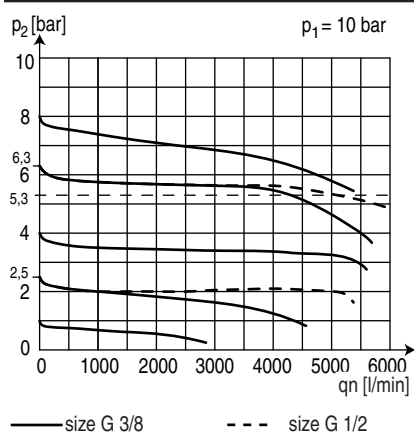
- Setting knob can be locked by pressing downwards
- Regulator head lockable
- interlocking of several individual devices requires coupling kit(s) KOP.2

<b>1</b>	<b>port size</b>	
	238	G 3/8
	212	G 1/2
	2N38	3/8-18 NPTF
	2N12	1/2-14 NPTF
<b>2</b>	<b>reduced pressure (see item table)</b>	
	e.g. 8	0,5 - 8 bar
<b>3</b>	<b>accessories (see reverse side)</b>	
	S	control panel nut

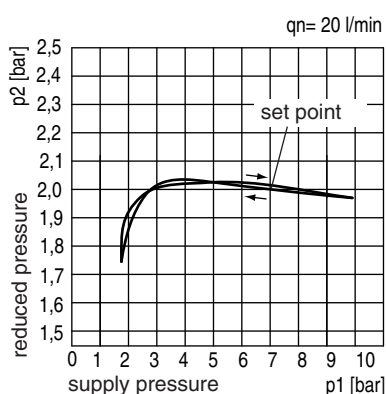
## dimensions (mm)



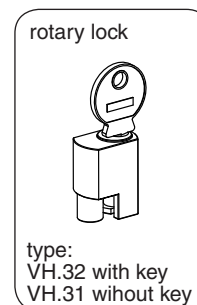
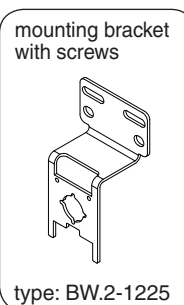
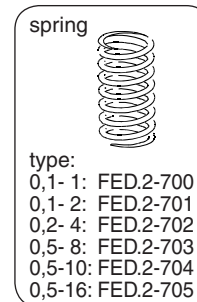
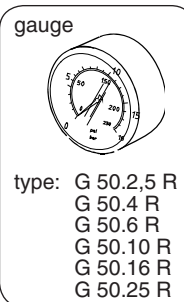
## flow characteristic



## pressure characteristic



## accessories 3



## area of application

