

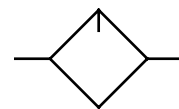
item	type	
	L.33	L.34
port size	G 1/2	G 3/4
description		
proportional lubricator		
mounting		
vertically		
medium		
compressed air, neutral gases		
supply pressure		
Pe max. 16 bar, Pe max. 20 bar with metal bowl		
medium and ambient temperature		
max. 60°C (oth. temperature ranges available upon request)		
bowl volume		
125 cm ³		
oil dosage rate when qv=1000 l/min		
1-2 drips/min (determining factor)		
kind of oil		
CL 32 standardized to DIN 51517-ISO VG 32		
fixing		
bracket or through 2 holes in the body		install in pipe line
weight		
0,684 kg		



technical modifications keep in reserve!

replacement parts 👉 (repair kit: ESA-L.33)

no	description	material	order-no.
1	body	Z 410	---
2	oil filler screw L.33-8	POM - NBR	7.2533.08.000
3	oil bowl	polycarbonate	8.2533.09.000
4	dome assembly	PA	9.9933.00.006
5	O-ring 50 x 2 C.33-23	NBR	1.2133.23.000
6	dome assembly metal	zinc-glass-NBR	9.9933.00.012
7	oil bowl with sight glass	zinc-PC-thermoplastic rubber	8.2533.90.000



series 3

ordering information

	L. ** *
type	
1 port size	2 option

ordering example: L.33 H

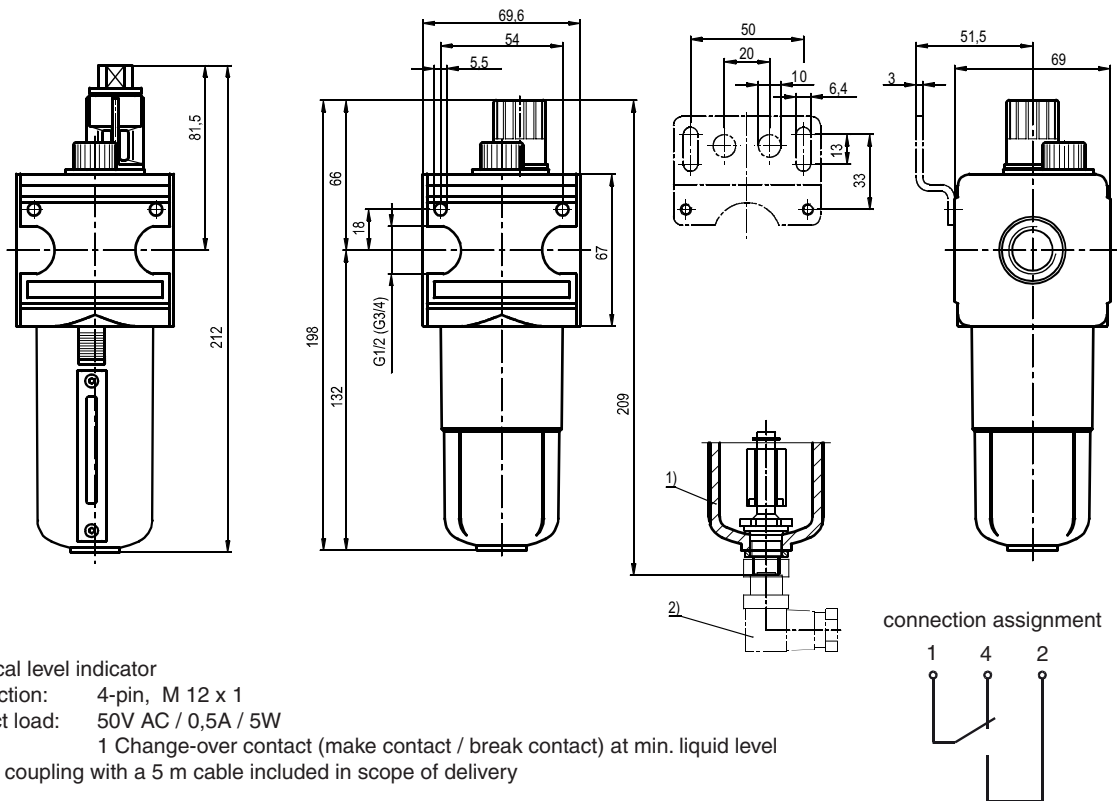
port size	
1	33 G 1/2
	34 G 3/4
options	
2	B bowl guard
	H metal bowl with sight glass
	N electric level monitoring

page: L.33 (04/06)

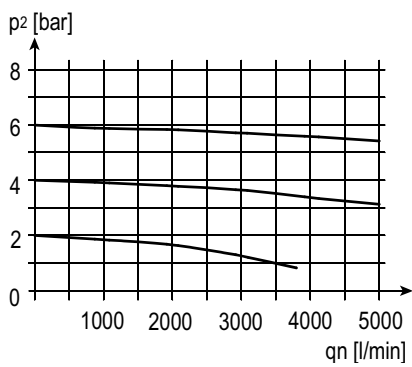
application information

- easy block assembly for components to be connected in series
- interlocking of several individual devices requires coupling kit(s) KP.33
- interlocking of several individual devices with narrow distributor Z.33 requires coupling kit(s) KP.33 Z
- oil fill in is possible under pressure
- field installation of bowl guard without tools

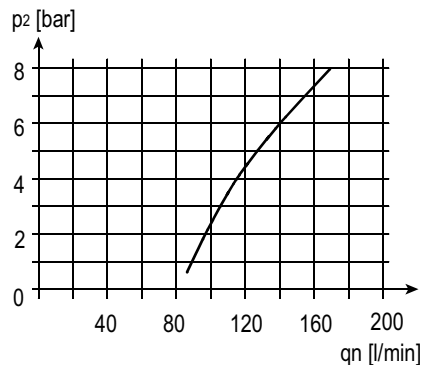
dimensions (mm)



flow characteristics

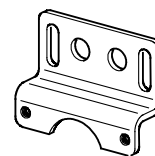


lubricator operating limit



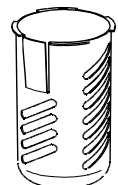
accessories

mounting bracket



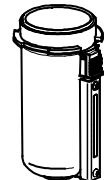
type: ZW.33

bowl guard



type: C.33-45

metal bowl with sight glass



type: L.33 H