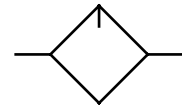
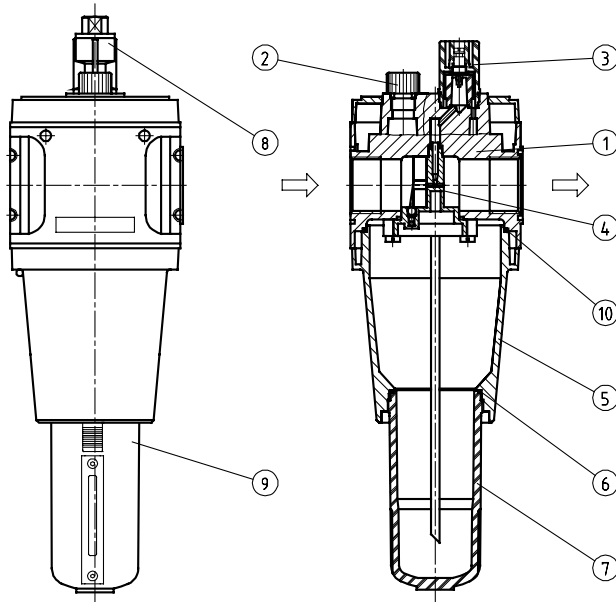


item	type	L.54	L.55
port size		G 3/4	G 1
description			
proportional lubricator			
mounting			
vertically			
medium			
compressed air, neutral gases			
supply pressure			
Pe max. 16 bar, Pe max. 20 bar with metal bowl			
medium and ambient temperature			
max. 60°C (oth. temperature ranges available upon request)			
bowl volume			
450 cm ³			
oil dosage rate when qv=1000 l/min			
1-2 drips/min (determining factor)			
kind of oil			
CL 32 standardized to DIN 51517 - ISO VG 32			
fixing			
install in pipe line, bracket			
weight			
1,500 kg			



technical modifications keep in reserve!



replacement parts

(repair kit: ESA-L.55)

no	description	material	order-no.
1	body	Al	---
2	oil filler screw L.33-8	POM - NBR	7.2533.08.000
3	dome assembly	PA	9.9933.00.006
4	baffle barrier	POM	3.2555.02.000
5	distance	Al	---
6	O-ring 50 x 2 C.33-23	NBR	1.2133.23.000
7	oil bowl	Polycarbonat	8.2533.09.000
8	dome assembly metal	zink-glass-NBR	9.9933.00.012
9	oil bowl with sight glass	zinc - PC - thermoplastic rubber	8.2533.90.000
10	O-ring 80 x 2,5 F.55-25	NBR	1.1355.25.000

application information

- easy block assembly for components to be connected in series
- interlocking of several individual devices requires coupling kit(s) KP.55
- interlocking of several individual devices with narrow distributor Z.5- or ball valve K.55 requires coupling kit(s) KP.55 Z
- oil fill in is possible under pressure
- field installation of bowl guard without tools

series 5

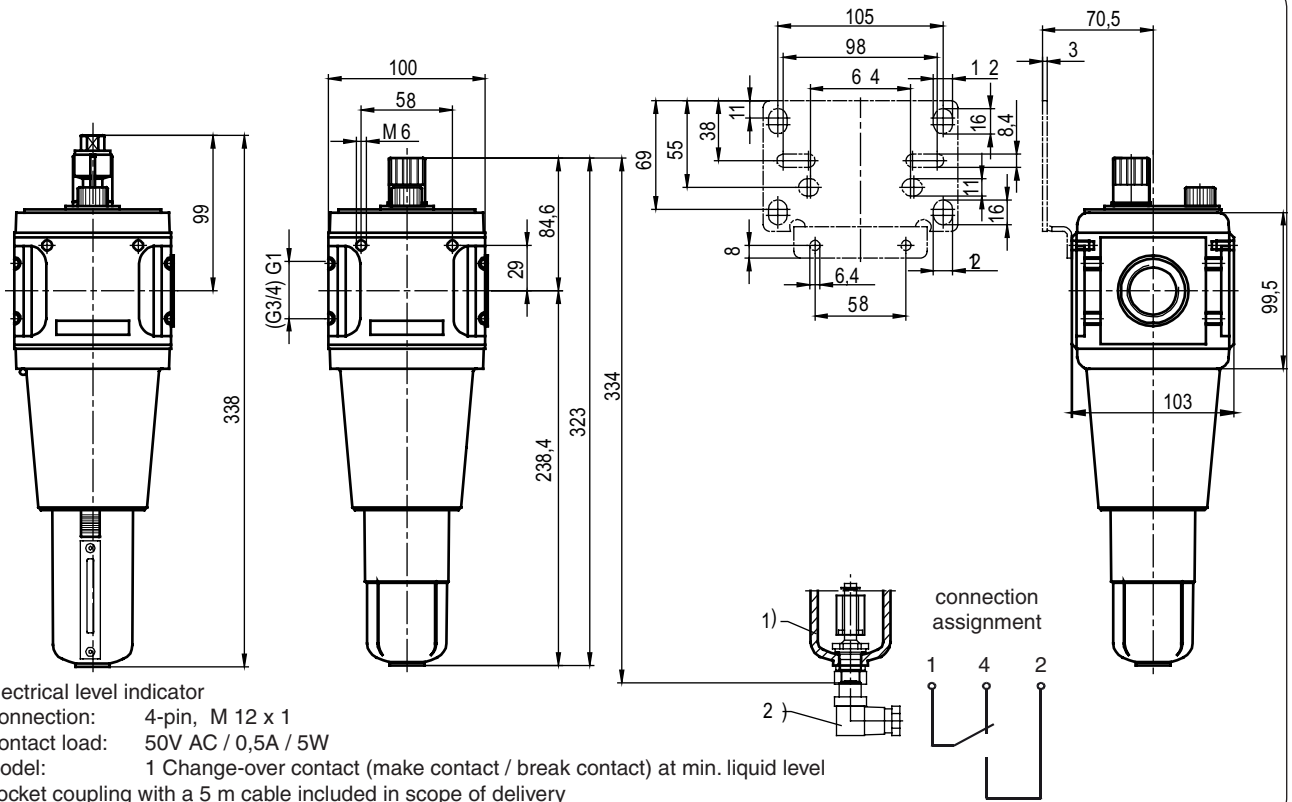
ordering information

L. ** *
 type
 port size option

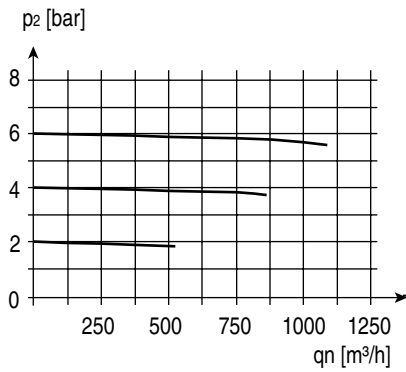
ordering example: L.55 H

port size	
1	54 G 3/4
	55 G 1
options	
2	B bowl guard
	H metal bowl with sight glass
	N electric level monitoring

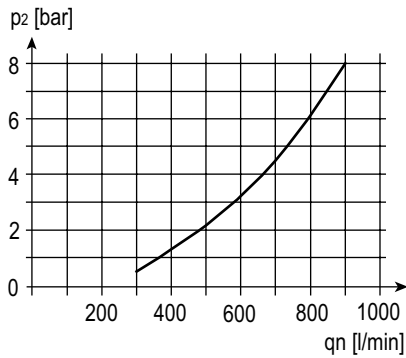
dimensions (mm)



flow characteristics

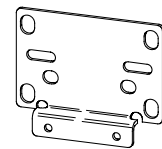


lubricator operating limit



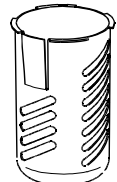
accessories

mounting bracket



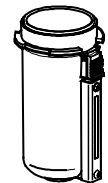
type: ZW.55

bowl guard



type: C.33-45

metal bowl with sight glass



type: L.33 H