

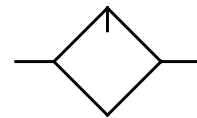
type	ML.33		
item			
port size	G 1/2		
description	micro-lubricator		
mounting	vertically		
medium	compressed air, neutral gases		
supply pressure	Pe max. 16 bar, Pe max. 20 bar with metal bowl		
medium and ambient temperature	max. 60°C (other temperature ranges available upon request)		
bowl volume	125 cm³		
oil dosage rate when qv=1000 l/min	10-20 drips/min (determining factor)		
kind of oil	CL 32 standardized to DIN 51517-ISO VG 32		
fixing	bracket or through 2 holes in the body		
weight	0,730 kg		



technical modifications keep in reserve!

**replacement parts**

no	description	material	order-no.
1	body	Z 410	---
2	oil filler screw L.33-8	St. - NBR	7.2533.08.000
3	oil bowl	polycarbonate	8.2533.09.000
4	dome assembly	PA	9.9933.00.006
5	O-ring 50 x 2 C.33-23	NBR	1.2133.23.000
6	dome assembly metal	zinc-glass-NBR	9.9933.00.012
7	oil bowl with sight glass	zinc-PC-thermoplastic rubber	8.2533.90.000
8	oil mist nozzle	POM - Ms	---
9	baffle barrier	NBR	---
10	reflecting plate	PA 6	---



### series 3

ordering information

ML. 33 \*

type

port size  option

ordering example: ML.33 H

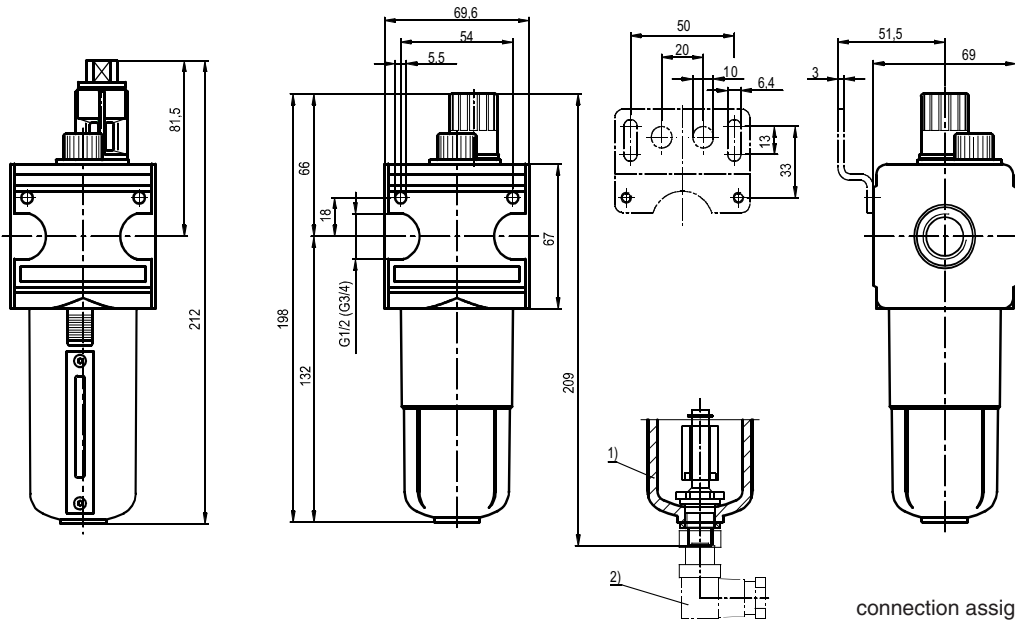
port size	
1	33 G 1/2
options	
B	bowl guard
H	metal bowl with sight glass
N	electric level indicator
2	

page: ML.33 (04/06)

### application information

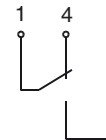
- easy block assembly for components to be connected in series
- interlocking of several individual devices requires coupling kit(s) KP.33
- interlocking of several individual devices with narrow distributor Z.33 requires coupling kit(s) KP.33 Z
- field installation of bowl guard without tools

## dimensions (mm)

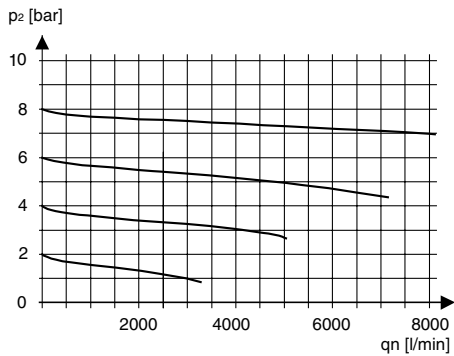


- 1) Electric level indicator  
 Connection: 4-pin, M 12 x 1  
 Contact load: 50V AC / 0,5A / 5W  
 Model: 1 Change-over contact (make contact / break contact) at min. liquid level
- 2) Socket coupling with a 5 m cable included in scope of delivery

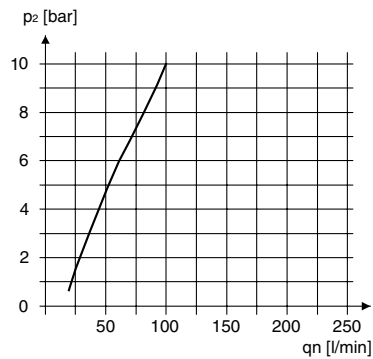
connection assignment



## flow characteristics

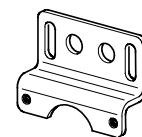


## lubricator operating limit



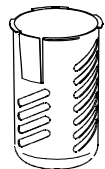
## accessories

mounting bracket



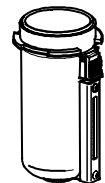
type: ZW.33

bowl guard



type: C.33-45

metal bowl with sight glass



type: L.33 H