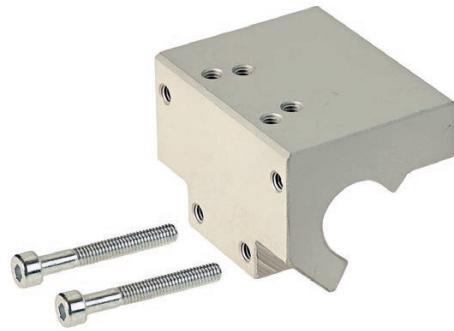


**Plate for valves series A1**  
**For cylinders ISO 15552**

Standard executions		
Version	Code	Item
For cylinders AMA 32-40	071458	PSV/A1/AMA-32-40
For cylinders AMA 50-63	071459	PSV/A1/AMA-50-63
For cylinders AMA 80-100-125	071460	PSV/A1/AMA-80-100-125
For cylinders AMT 160-200	070822	PSV/A1/AMT-160-200



Series of plates for the direct assembly of the valves A1 to the tube (or tie-rods) of the cylinder AMA / AMT / CM. These plates have multiple mounting holes for at least two sizes of A1 valves (depending on cylinders bore).

Material: Aluminium 11S – Anodized neutral

**PSV/A1/AMA-32-40**  
 (With mounting holes for A1 1/8" - 1/4")

The Kit include 2 screws and 2 grains

**PSV/A1/AMA-50-63**  
 (With mounting holes for A1 1/8" - 1/4")

The Kit include 2 screws and 2 grains

**PSV/A1/AMA-80-100-125**  
 (With mounting holes for A1 1/8" - 1/4" - 1/2")

The Kit include 2 screws and 2 grains

**PSV/A1/AMT-160-200**  
 (With mounting holes for A1 1/4" - 1/2")

The Kit include 2 screws and 2 grains