

Valves series A1
1/2", 3/2, pneumatically operated

Standard executions			
Version	Symbol	Code	Item
3/2 NC		034116	A1P430
3/2 NO		034127	A1P431
3/2 pilot/pilot		034128	A1P432



CE **II 2Gc IIB T5**
II 2Dc T100°C

On request, they can be supplied according to 2014/34/EU - **ATEX**

Series of spool valves, with static seals, high flow, for panel mounting.

Options	Suffix
Low temperature seals (-25 ÷ +60°C)	BT

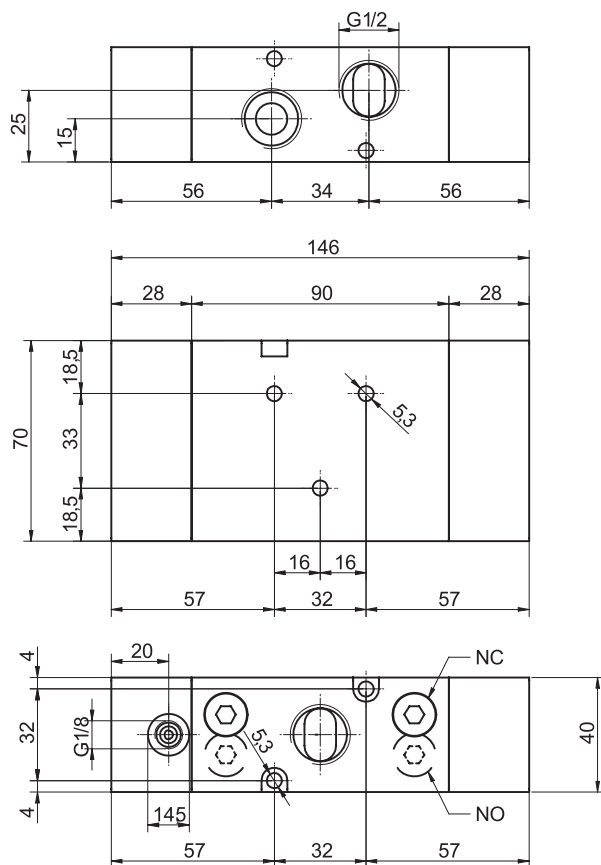
Code key

Series	Actuation	Size	Function	Options
A1	P = pneumatic	4 = 1/2"	30 = 3/2 NC 31 = 3/2 NO 32 = 3/2 pilot/pilot 33 = 3/2 pilot/pilot differential	BT = low temp. seals

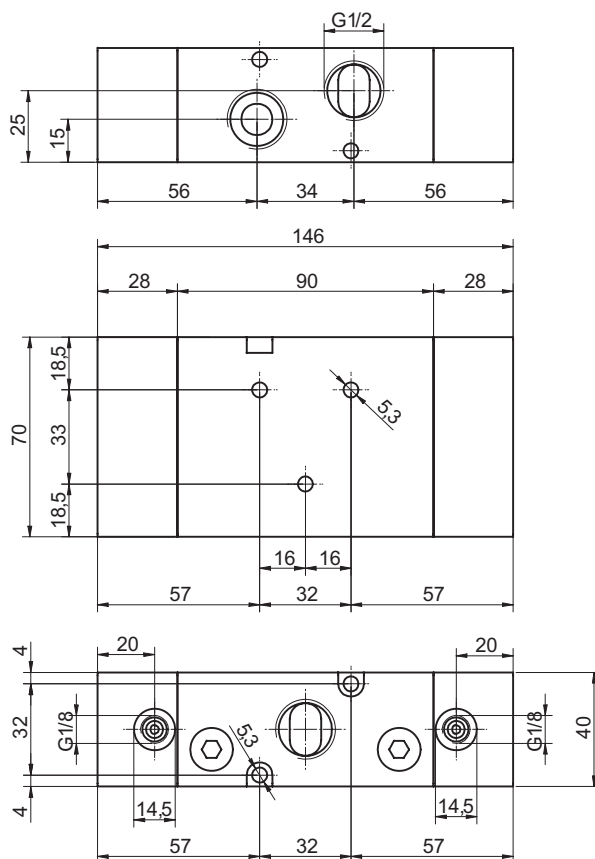
Technical data	
Fluid	Compressed filtered air with or without lubrication. Lubrication, if started, must be continued.
Pressure range	2,5 ÷ 10 bar
Temperature range	-10°C ÷ +60°C (standard) -25°C ÷ +60°C (BT)
Orifice	15 mm
Flow	2900 NI/min at 6 bar with ΔP 1 bar
Minimum piloting pressure	Spring return: 2,5 bar Bistable: 1 bar
Mounting	In any position
Materials	Body: Anodised aluminium Covers: Anodised aluminium Spool: Hard aluminium anodized Distancers: Aluminium Seals: Hydrogenated Nitrile Butadiene Rubber (HNBR)



Valves series A1
1/2", 3/2, pneumatically operated



Version	Symbol	Code	Item
3/2 NC		034116	A1P430
3/2 NO		034127	A1P431



Version	Symbol	Code	Item
3/2 solenoid/solenoid		034128	A1P432