

Regulator G 1/8, G 1/4

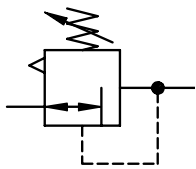
type	R.00	R.01	
item			
port size	G 1/8	G 1/4	
description	air line regulator with diaphragm and relieving feature		
mounting	arbitrary		
supply pressure	Pe max. 16 bar		
reduced pressure	Pa 0,5-10 bar standard, 0,1-3 bar, 0,2-6 bar		
media and ambient			
temperature	max. 60°C (oth. temperature ranges available upon request)		
fixing	panel mounting, bracket		
weight	0,260 kg, (0,365 kg with lock device)		



technical modifications keep in reserve!

replacement parts (repair kit: ESA-R.00)

no	description	material	order-no
1	body	zinc - Z 410	---
2	spring cage C.00-72	POM - Ms	8.2100.72.000
3	diaphragm assembly	NBR - Ms	
4	spring 0-10 bar C.11-83	St.-galvanized	5.2111.83.000
5	valve cone	NBR - Ms	
6	spring DR.00-70	stainless steel	5.1500.70.000
7	O-ring 16 x 2	NBR	
8	bonnet R.00-10	POM	7.1700.10.000
9	spring cage lockable C.11-K	POM - Al	8.2111.72.001
10	lock cylinder C.33-52	Ms	5.2133.52.000



series 0

ordering information

R. ** * *

type reduced pressure

1 port size 2 option

ordering example: R.00 G S 0,1-3

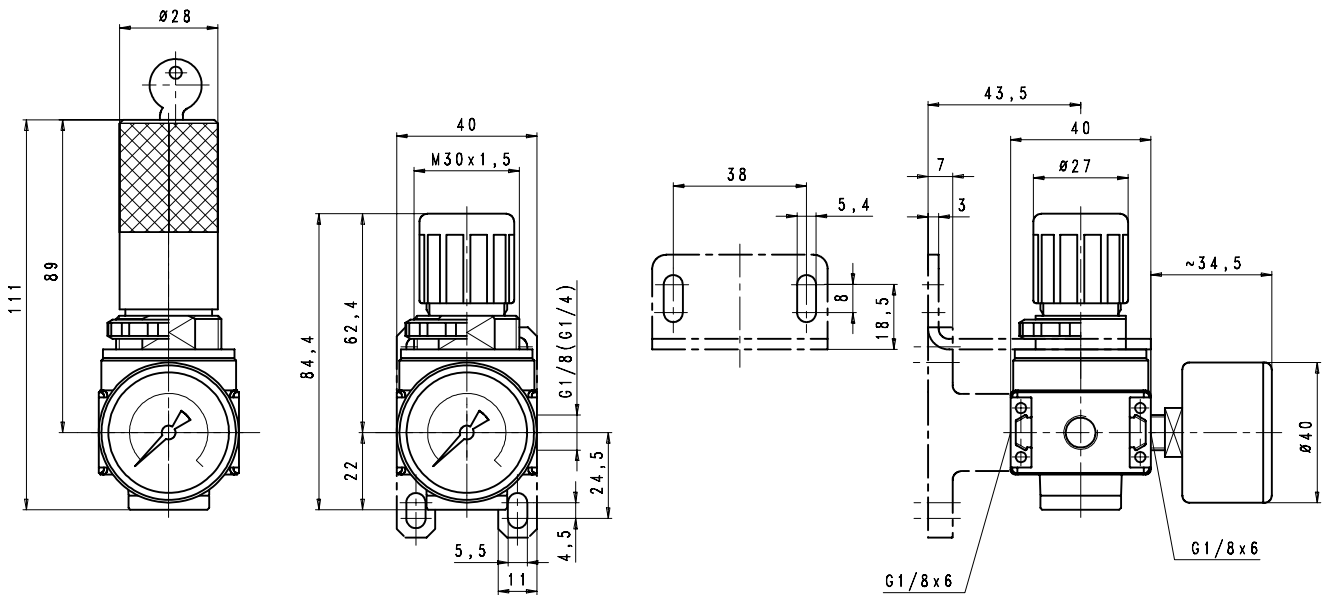
port size	
1	00 G 1/8
	01 G 1/4
2	options
	G gauge ø40
	S panel mounting
	K keylock

application information

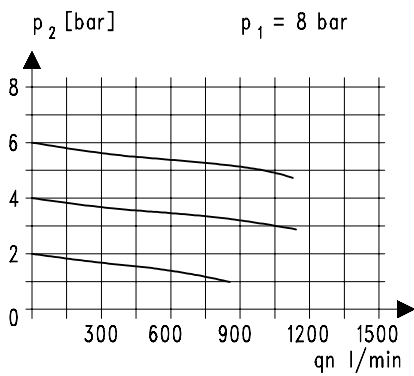
- easy block assembly for components to be connected in series
- interlocking of several individual devices requires coupling kit(s) KP.00 (Pe max. 12 bar)
- adjusting knob can be locked by depressing

page: R.00 (02/04)

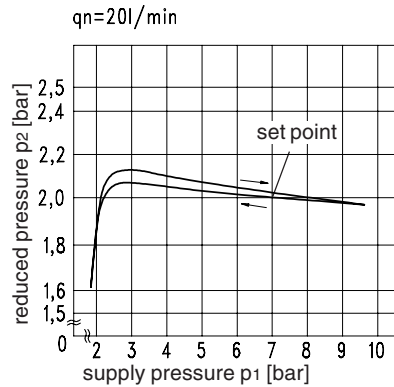
dimensions (mm)



flow characteristics

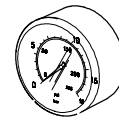


pressure characteristic



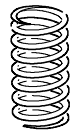
accessories

gauge



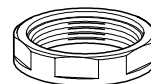
type:
G 40. 3/ 6 R
G 40. 6/10 R
G 40.10/16 R

spring



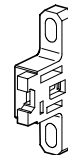
type:
0,1- 3: C.11-81
0,2- 6: C.11-82

panel mounting ring M 30 x 1,5



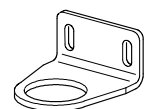
type: C.00-34

mounting bracket assembly



type: ZW.00

mounting bracket



type: MW.30