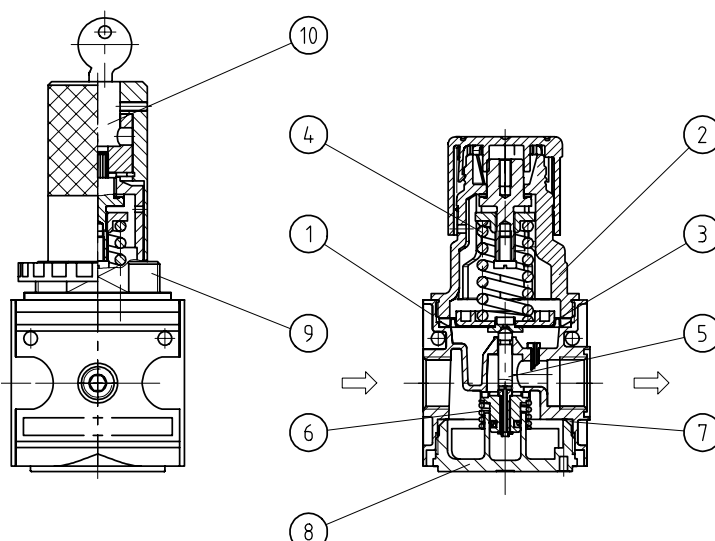


Regulator G 1/2, G 3/4

| item | type | R.33 | R.34 |
|---|------|-------|-------|
| port size | | G 1/2 | G 3/4 |
| description air line regulator with diaphragm and relieving feature | | | |
| mounting arbitrary | | | |
| supply pressure Pe max. 16 bar | | | |
| reduced pressure Pa 0,5-10 bar standard, 0,1-3 bar, 0,2-6 bar, 0,5-16 bar | | | |
| media and ambient max. 60°C | | | |
| temperature (oth. temperature ranges available upon request) | | | |
| fixing panel mounting, | | | |
| bracket or through 2 holes in the body | | | |
| weight 0,935 kg, (0,850 kg without gauge) | | | |
| 1,044 kg type with lock device | | | |
| | | | |
| | | | |
| | | | |
| | | | |

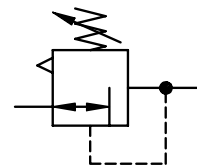


technical modifications keep in reserve!



replacement parts ☛ (repair kit: ESA-R/C.33)

| no | description | material | order-no. |
|----|-----------------------------|------------------|---------------|
| 1 | body | zinc - Z 410 | --- |
| 2 | spring cage C.33-77 | POM - Ms | 8.2133.77.000 |
| 3 | diaphragm assembly | NBR - Ms | ☞ |
| 4 | regulating spring 0-10 bar | St. - galvanized | 5.2133.08.000 |
| 5 | valve cone | NBR - Ms | ☞ |
| 6 | spring C.33-22 | niro | 5.2133.22.000 |
| 7 | O-ring 50 x 2 | NBR | ☞ |
| 8 | bonnet R.33-10 | PBT | 3.1733.10.000 |
| 9 | spring cage lockable C.33-K | POM - Al | 8.2133.72.001 |
| 10 | lock cylinder C.33-52 | Ms | 5.2133.52.000 |
| | | | |
| | | | |



series 3

ordering information

R. ** * *

type reduced pressure

1 port size 2 option

ordering example: R.33 G S 0,1-3

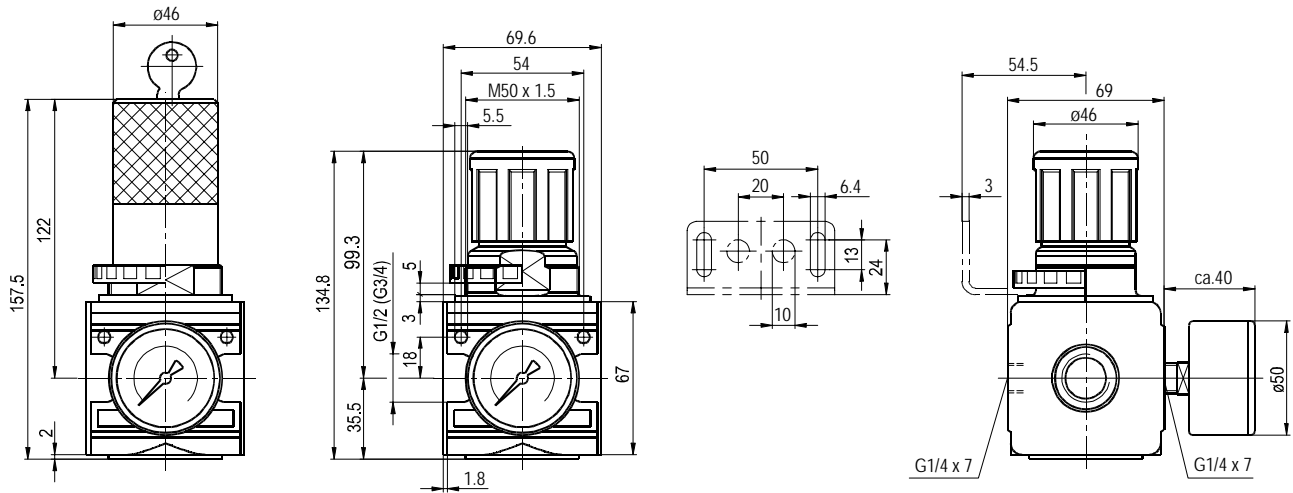
| port size | |
|-----------|------------------|
| 1 | 33 G 1/2 |
| | 34 G 3/4 |
| 2 | options |
| | G gauge ø50 |
| | S panel mounting |
| | K keylock |
| | |

page: R.33 (08/04)

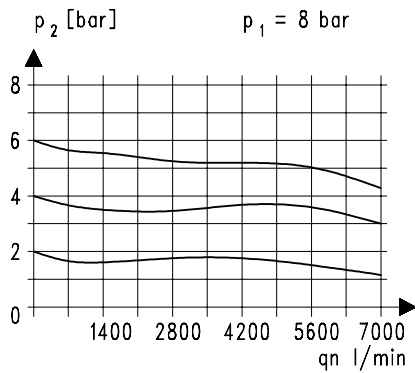
application information

- easy block assembly for components to be connected in series
- interlocking of several individual devices requires coupling kit(s) KP.33
- interlocking of several individual devices with narrow distributor Z.33 requires coupling kit(s) KP.33 Z
- adjusting knob can be locked by depressing

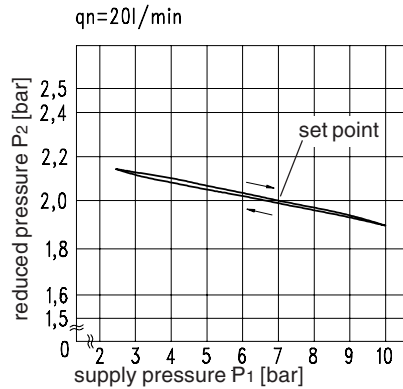
dimensions (mm)



flow characteristics

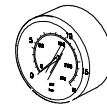


pressure characteristic



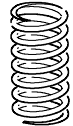
accessories

gauge



type:
G 50. 3/ 6 R
G 50. 6/10 R
G 50.10/16 R
G 50.16/25 R

spring



type:
0,1- 3: C.33-6
0,2- 6: C.33-7
0,5-16: C.33-88

panel mounting ring M 50 x 1,5

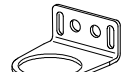


type: C.33-42

mounting bracket



type: ZW.33



type: MW.50