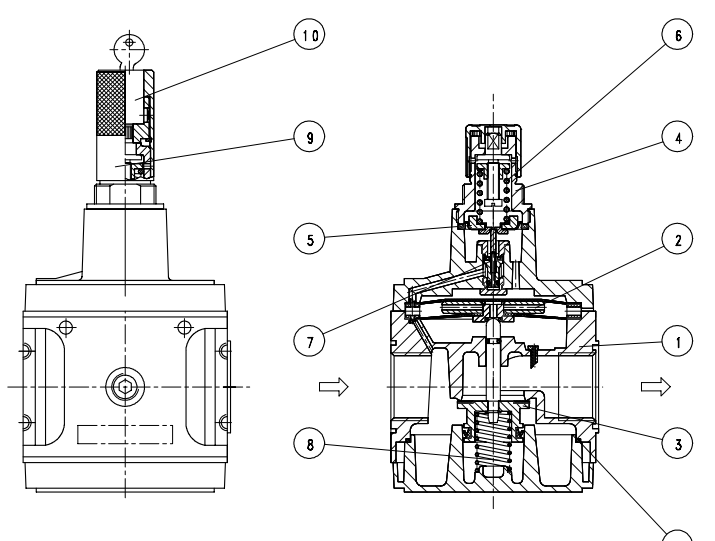


## Regulator G 3/4, G 1

item	type	R.54	R.55
port size		G 3/4	G 1
description			
		air line regulator with diaphragm and relieving feature	
		pilot controlled	
mounting			
		arbitrary	
supply pressure			
		Pe max. 20 bar	
reduced pressure			
		Pa 0,5-10 bar standard; 0,1-3 bar; 0,2-6 bar; 0,5-16 bar	
air consumption			
		0,5 l/min (max.)	
media and ambient			
		max. 60°C (oth. temperature ranges available upon request)	
fixing			
		install in pipe line, bracket	
weight			
		1,554 kg, (1,460 kg without gauge)	
		1,664 kg lockable	



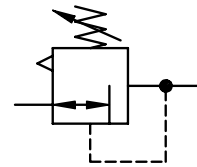
technical modifications keep in reserve!



( repair kit: ESA-R.55 )

### replacement parts

no	description	material	order-no.
1	body	Al	---
2	diaphragm	NBR-Ms-Al	ES
3	valve cone	Ms-NBR	ES
4	spring cage	POM-Ms	8.2100.72.000
5	diaphragm	NBR - Ms	ES
6	regulating spring 0-10 bar C.11-83	St-galvanized	5.2111.83.000
7	valve cone	Ms-NBR	ES
8	spring	C.55-22 niro	5.2155.22.000
9	spring cage lockable	POM - Al	8.2111.72.001
10	lock cylinder	C.33-52 Ms	5.2133.52.000
11	O-ring 81 x 2	NBR	ES



### series 5

### ordering information

**R. \*\* \* \***

type		reduced pressure
1 port size		2 option

ordering example: R.55 G 0,1-3

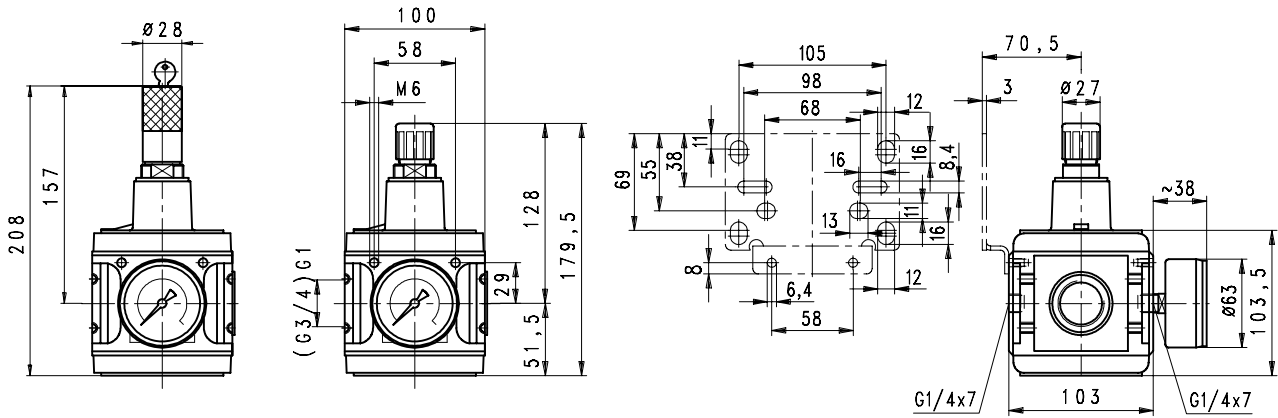
port size	
1	54 G 3/4
	55 G 1
options	
2	G gauge ø63
	K keylock

page: R.55 (08/04)

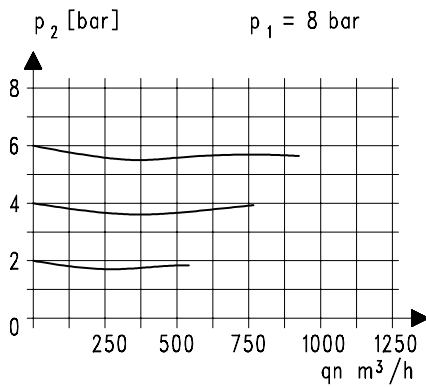
### application information

- easy block assembly for components to be connected in series
- interlocking of several individual devices requires coupling kit(s) KP.55
- interlocking of several individual devices with narrow distributor Z.5- or ball valve K.55 requires coupling kit(s) KP.55 Z
- adjusting knob can be locked by depressing

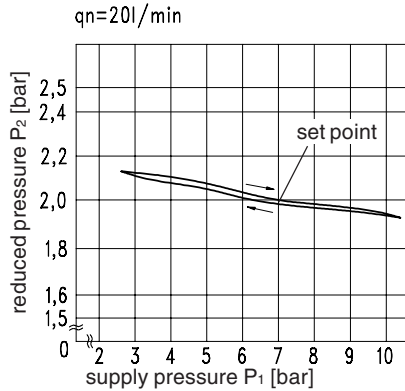
## dimensions (mm)



## flow characteristics

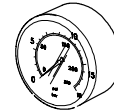


## pressure characteristic



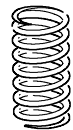
## accessories

### gauge



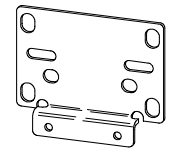
type:  
G 63. 3/ 6 R  
G 63. 6/10 R  
G 63.10/16 R  
G 63.16/25 R

### spring



type:  
0,1- 3: C.11-81  
0,2- 6: C.11-82  
0,5-16: C.11-66

### mounting bracket



type: ZW.55