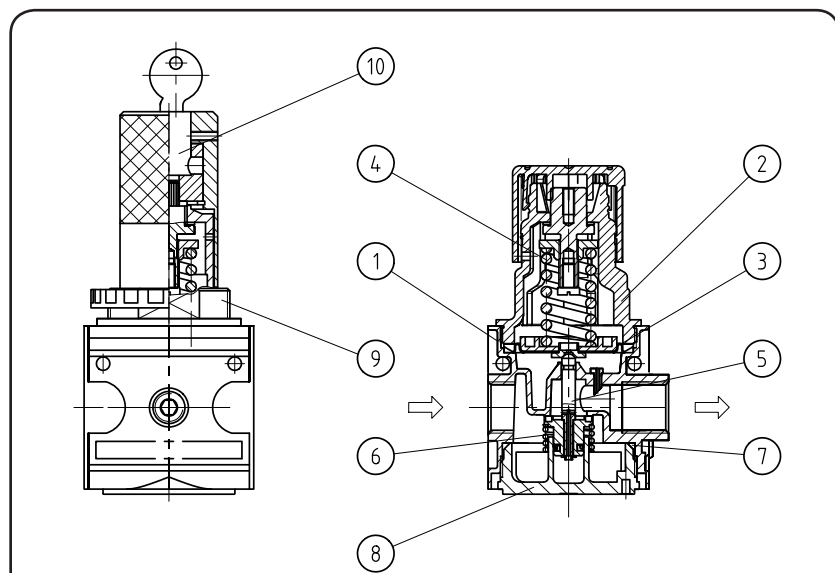


| item | type | RB.33 | |
|-------------------|------|--|--|
| port size | | G 1/2 | |
| description | | air line regulator with diaphragm and relieving feature | |
| mounting | | arbitrary | |
| supply pressure | | Pe max. 16 bar | |
| reduced pressure | | Pa 0,5-10 bar standard, 0,1-3 bar, 0,2-6 bar, 0,5-16 bar | |
| media and ambient | | max. 60°C | |
| temperature | | (oth. temperature ranges available upon request) | |
| fixing | | panel mounting, bracket or through | |
| | | 2 holes in the body | |
| weight | | 0,935 kg, (0,850 kg without gauge) | |
| | | 1,044 kg type with lock device | |
| | | | |
| | | | |
| | | | |
| | | | |



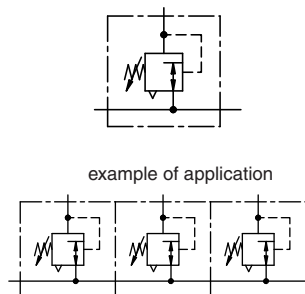
replacement parts

(repair kit: ESA-R/C.33)

| no | description | material | order-no. |
|----|-----------------------------|------------------|---------------|
| 1 | body | zinc - Z 410 | --- |
| 2 | spring cage C.33-77 | POM - Ms | 8.2133.77.000 |
| 3 | diaphragm assembly | NBR - Ms | |
| 4 | regulating spring 0-10 bar | St. - galvanized | 5.2133.08.000 |
| 5 | valve cone | NBR - Ms | |
| 6 | spring C.33-46 | niro | 5.2133.46.000 |
| 7 | O-ring 50 x 2 | NBR | |
| 8 | bonnet R.33-10 | PBT | 3.1733.10.000 |
| 9 | spring cage lockable C.33-K | POM - Al | 8.2133.72.001 |
| 10 | lock cylinder C.33-52 | Ms | 5.2133.52.000 |
| | | | |
| | | | |
| | | | |

application information

- easy block assembly for components to be connected in series
- interlocking of several individual devices requires coupling kit(s) KP.33
- interlocking of several individual devices with narrow distributor Z.33 requires coupling kit(s) KP.33 Z
- adjusting knob can be locked by depressing
- at long interlinkages is additional pressure supply with intermediate mounting of distributor T.33 and Z.33 possible



series 3

ordering information

RB. 33 * *

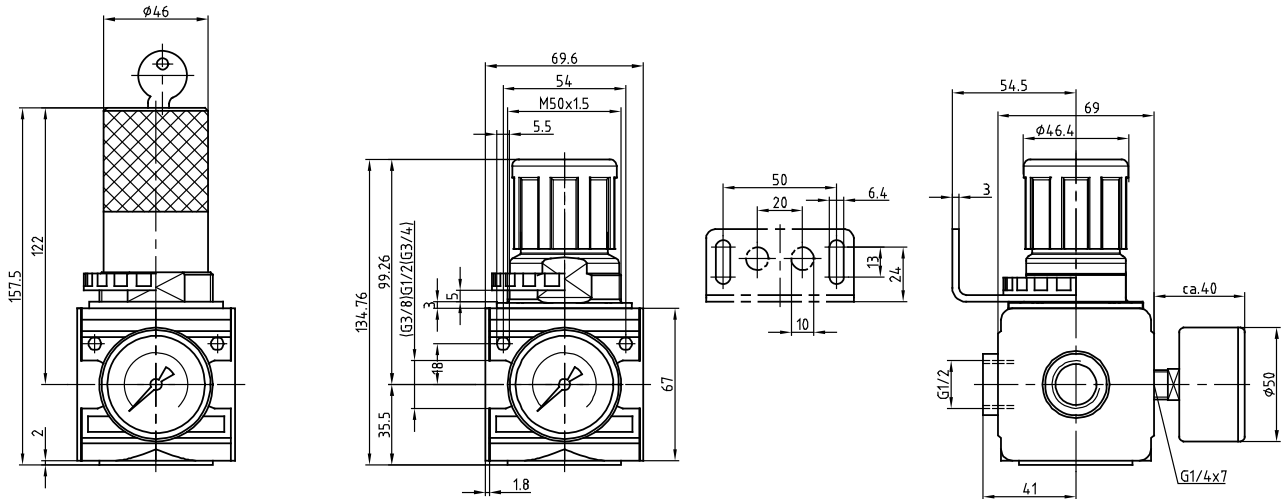
type

port size option reduced pressure

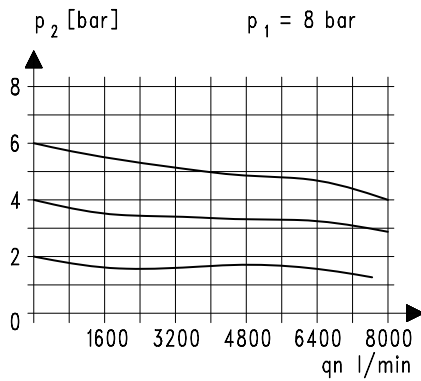
ordering example: RB.33 G S 0,1-3

| port size | |
|-----------|------------------|
| 1 | 33 G 1/2 |
| | |
| options | |
| 2 | G gauge ø50 |
| | S panel mounting |
| | K keylock |
| | |
| | |

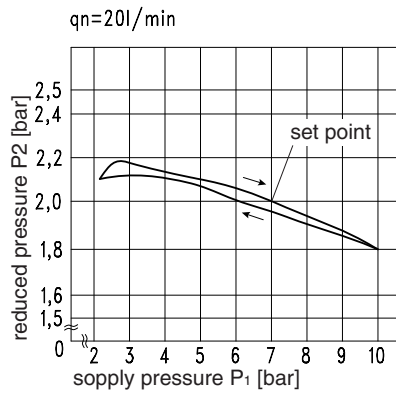
dimensions (mm)



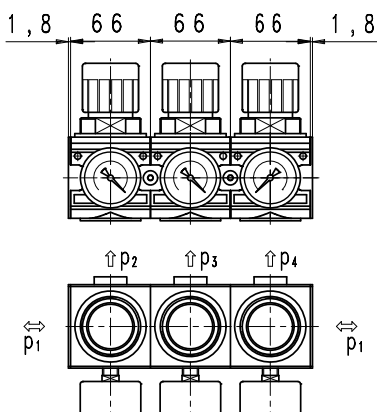
flow characteristics



pressure characteristic

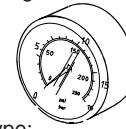


various application



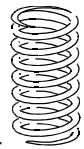
accessories

gauge



type:
G 50. 6 R
G 50. 10 R
G 50. 16 R
G 50. 25 R

spring



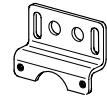
type:
0,1- 3: C.33-6
0,2- 6: C.33-7
0,5-16: C.33-66

panel mounting ring M 50 x 1,5



type: C.33-42

mounting bracket



type: ZW.33



type: MW.50