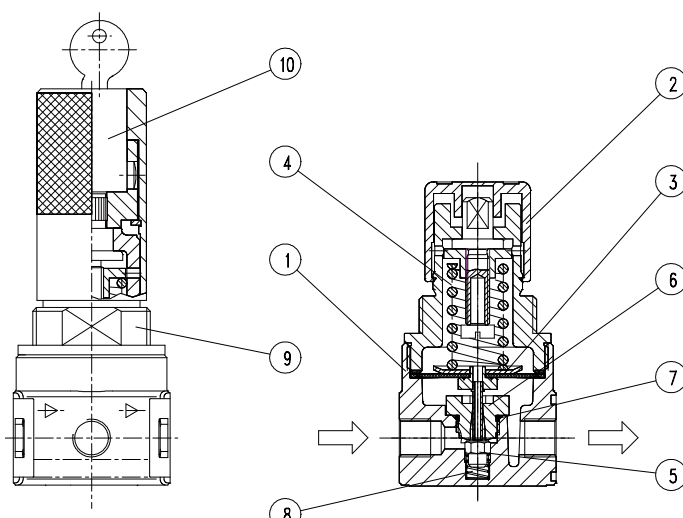


Regulator G 1/8, G 1/4

item	type	RE.00	RE.01
port size		G 1/8	G 1/4
description air line regulator with diaphragm and relieving feature			
mounting arbitrary			
supply pressure Pe max. 16 bar			
reduced pressure Pa 0,5-10 bar standard, 0,1-3 bar, 0,2-6 bar			
media and ambient			
temperature max. 60°C (oth. temperature ranges available upon request)			
fixing panel mounting, bracket			
weight 0,240 kg, (0,345 kg with lock device)			

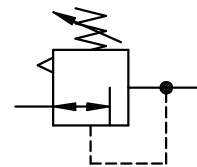


technical modifications keep in reserve!



replacement parts ☞ (repair kit: ESA-RE.00)

no	description	material	order-no.
1	body	zinc - Z 410	---
2	spring cage C.00-72	POM - Ms	8.2100.72.000
3	diaphragm assembly	NBR - Ms	☞
4	spring 0-10 bar C.11-83	St.-galvanized	5.2111.83.000
5	valve cone	NBR - Ms	☞
6	valve seat RE.00-2	POM	7.1700.02.600
7	O-ring 9 x 2	NBR	☞
8	spring DR.022-5	niro	5.1500.05.700
9	spring cage lockable C.11-K	POM - Al	8.2111.72.001
10	lock cylinder C.33-52	Ms	5.2133.52.000



series 0

ordering information

RE. **★★** ***** *****

type		reduced pressure
1 port size		2 option

ordering example: RE.00 G S 0,1-3

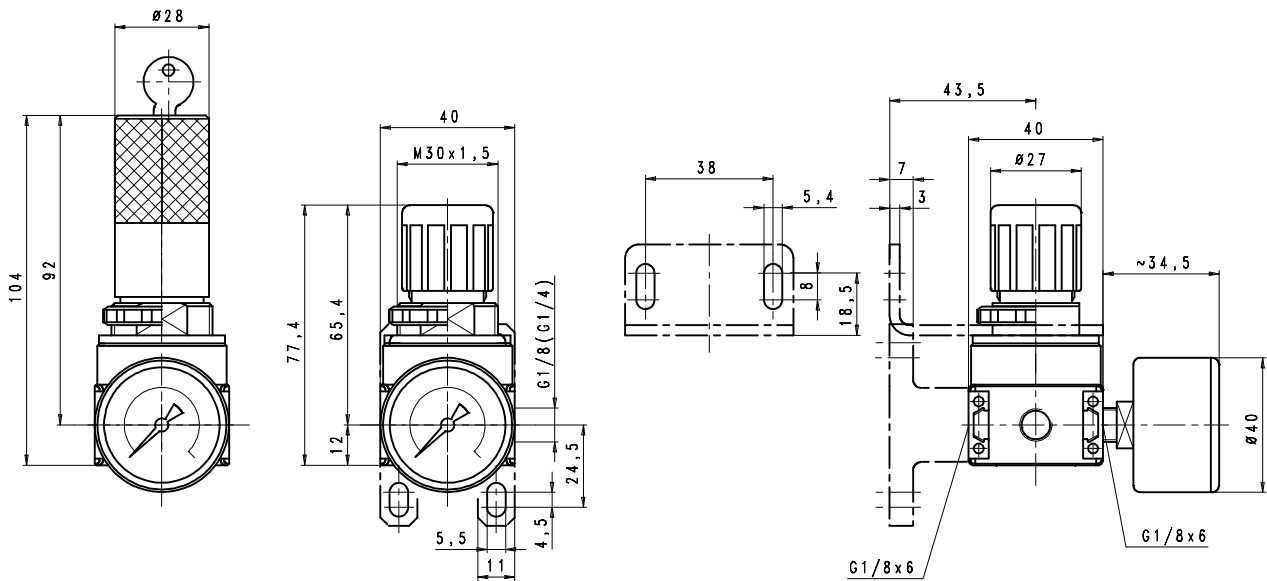
port size	
1	00 G 1/8
	01 G 1/4
options	
2	G gauge ø40
	S panel mounting
	K keylock

application information

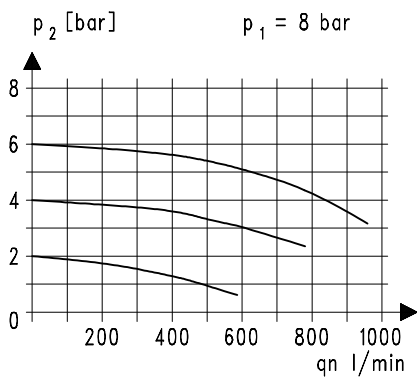
- easy block assembly for components to be connected in series
- interlocking of several individual devices requires coupling kit(s) KP.00 (Pe max. 12 bar)
- adjusting knob can be locked by depressing

page: RE.00 (11/02)

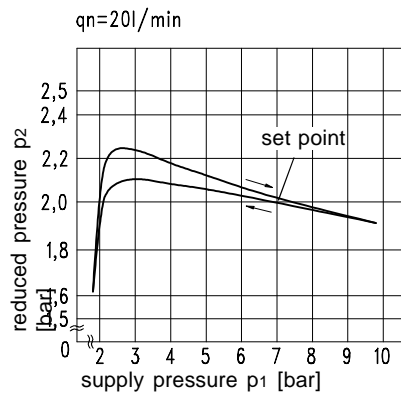
dimensions (mm)



flow characteristics

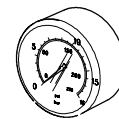


pressure characteristic



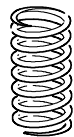
accessories

gauge



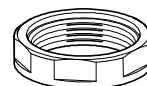
type:
G 40. 3/ 6 R
G 40. 6/10 R
G 40.10/16 R

spring



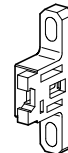
type:
0,1-3: C.11-81
0,2-6: C.11-82

panel mounting ring M 30 x 1,5



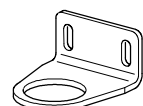
type: C.00-34

mounting bracket assembly



type: ZW.00

mounting bracket



type: MW.30