

Regulator G 1/4 with gauge ø40 inside the adjusting knob

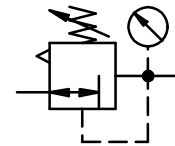
item	type	RG.01 S
port size		G 1/4
description		air line regulator with diaphragm and relieving feature
mounting		arbitrary
supply pressure		Pe max.16 bar
reduced pressure		Pa 0,5-10 bar standard; 0,1-3 bar; 0,2-6 bar
media and ambient		
temperature		max. 60°C (oth. temperature ranges available upon request)
fixing		panel mounting
weight		0,350 kg



technical modifications keep in reserve!

(repair kit: ESA-RG.01)

no	description	material	order-no
1	body	zinc - Z 410	---
2	spring cage	POM-Ms-NBR	---
3	diaphragm assembly	Zink-NBR-Ms	☞
4	spring 0-10 bar C.11-83	St.-galvanized	---
5	valve cone	NBR - Ms	☞
6	spring C.11-87	niro	---
7	O-ring 16 x 2	NBR	☞
8	bonnet R.00-10	POM	---



series 0

ordering information

RG. 01	S	★
type	reduced pressure	
1 port size	2 option	

ordering example: RG.01 S 0,1-3 gauge ø40

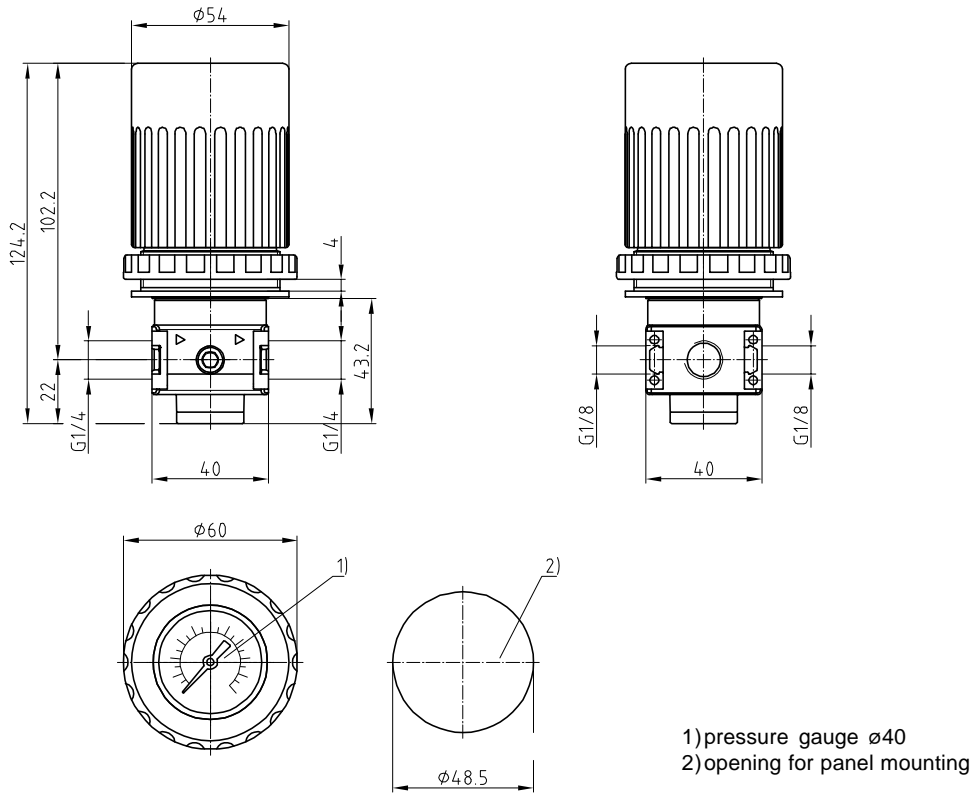
port size	
1	01 G 1/4
options	
2	

page: RG.0140 (03/03)

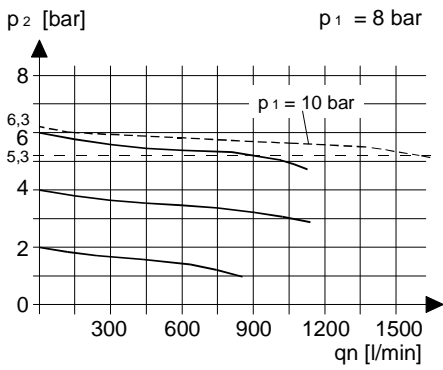
application information

- interlocking of several individual devices requires coupling kit(s) KP.00
- adjusting knob can be locked by depressing

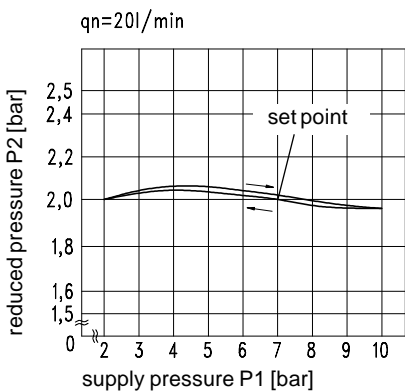
dimensions (mm)



flow characteristics



pressure characteristic



accessories

