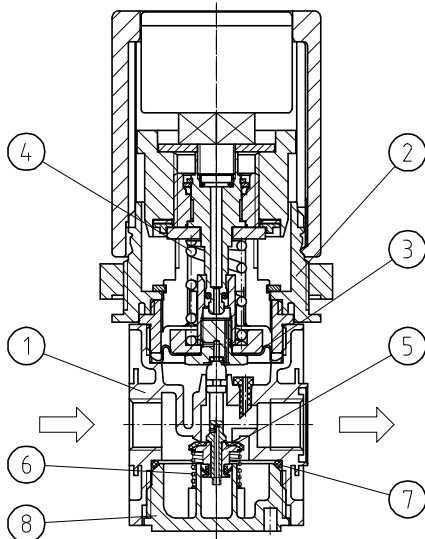


# Regulator G 1/4, G 3/8, with gauge ø40 inside the adjusting knob

item	type		
	RG.11 S	RG.12 S	
port size	G 1/4	G 3/8	
description	air line regulator with diaphragm and relieving feature		
mounting	arbitrary		
supply pressure	Pe max.16 bar		
reduced pressure	Pa 0,5-10 bar standard, 0,1-3 bar, 0,2-6 bar		
media and ambient			
temperature	max. 60°C (oth. temperature ranges available upon request)		
fixing	panel mounting		
weight	0,520 kg		



technical modifications keep in reserve!



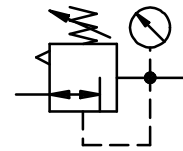
## replacement parts

(repair kit: ESA-R.11)

no	description	material	order-no.
1	body	zinc - Z 410	---
2	spring cage	POM - Ms - NBR	---
3	diaphragm assembly	zinc - NBR - Ms	
4	regulating spring 0-10 bar	St. - galvanized	5.2111.83.000
5	valve cone	NBR - Ms	
6	spring	C.11-87	5.2111.87.000
7	O-ring 30 x 2	niro	
8	bonnet	NBR	
		POM	---

## application information

- easy block assembly for components to be connected in series
- interlocking of several individual devices requires coupling kit(s) KP.11
- interlocking of several individual devices with narrow distributor Z.11 requires coupling kit(s) KP.11 Z
- adjusting knob can be locked by depressing



## series 1

### ordering information

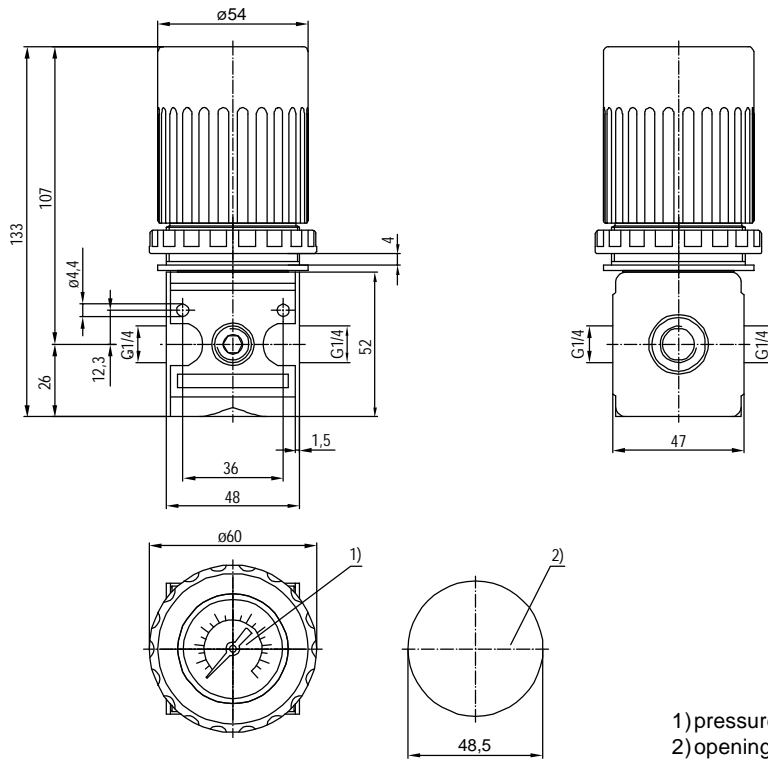
**RG. \*\* S \***  
 type  reduced pressure   
 1 port size  2 option

ordering example: RG.11 S 0,1-3

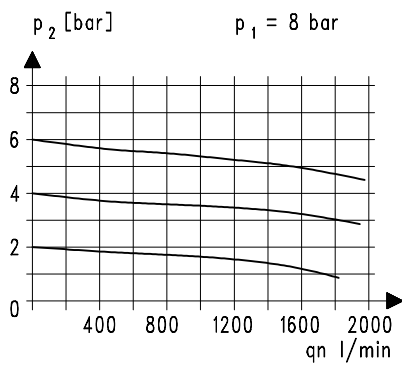
port size	
1	11 G 1/4
	12 G 3/8
options	
2	

page: RG.11 (03/03)

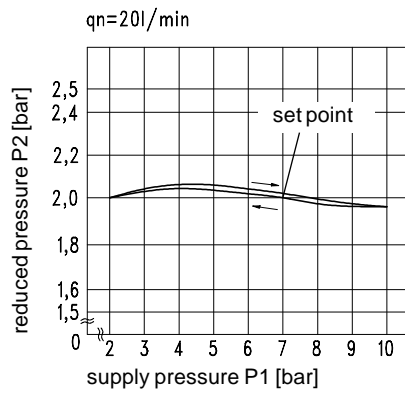
## dimensions (mm)



## flow characteristics



## pressure characteristic



## accessories

spring



type:  
0,1- 3: C.11-81  
0,2- 6: C.11-82