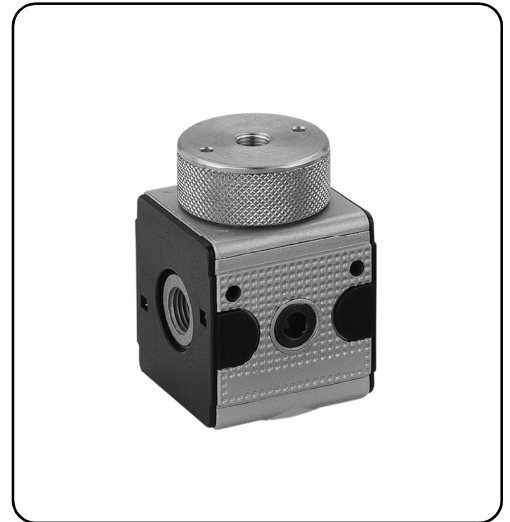


# Regulator G 1/4

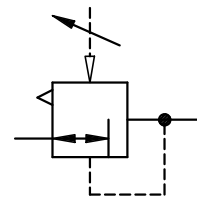
| item              | type  | RI.11 |  |
|-------------------|---|-------|--|
| port size         |   | G 1/4 |  |
| description       | air line regulator with diaphragm and relieving feature |       |  |
|                   | pneumatic pilot-operated                                |       |  |
| mounting          | arbitrary   |       |  |
| supply pressure   | Pe max. 16 bar  |       |  |
| reduced pressure  | equal to the pilot-regulator (Pa max. 16 bar)           |       |  |
| media and ambient |   |       |  |
| temperature       | max. 60°C   |       |  |
| fixing            | bracket or through 2 holes in the body                  |       |  |
| weight            | 0,500 kg, (0,422 kg without gauge)                      |       |  |
|                   |   |       |  |
|                   |   |       |  |
|                   |   |       |  |



technical modifications keep in reserve!

**replacement parts** (repair kit: ESA-RI.11)

| no | description                  | material     | order-no.     |
|----|------------------------------|--------------|---------------|
| 1  | body                         | zinc - Z 410 | ---           |
| 2  | control pressure top R.11-13 | Ms           | 2.1711.13.000 |
| 3  | bonnet R.11-12               | Ms           | 2.1711.12.000 |
| 4  | diaphragm assembly           | NBR - Ms     |               |
| 5  | valve cone                   | NBR - Ms     |               |
| 6  | spring C.11-87               | niro         | 5.2111.87.000 |
| 7  | O-ring 30 x 2                | NBR          |               |
| 8  | bonnet R.11-10               | POM          | 3.1711.10.000 |
|    |                              |              |               |
|    |                              |              |               |
|    |                              |              |               |



## Series 1

ordering information

**RI. 11 \***

|             |          |
|-------------|----------|
| type        |          |
| 1 port size | 2 option |

ordering example: RI.11

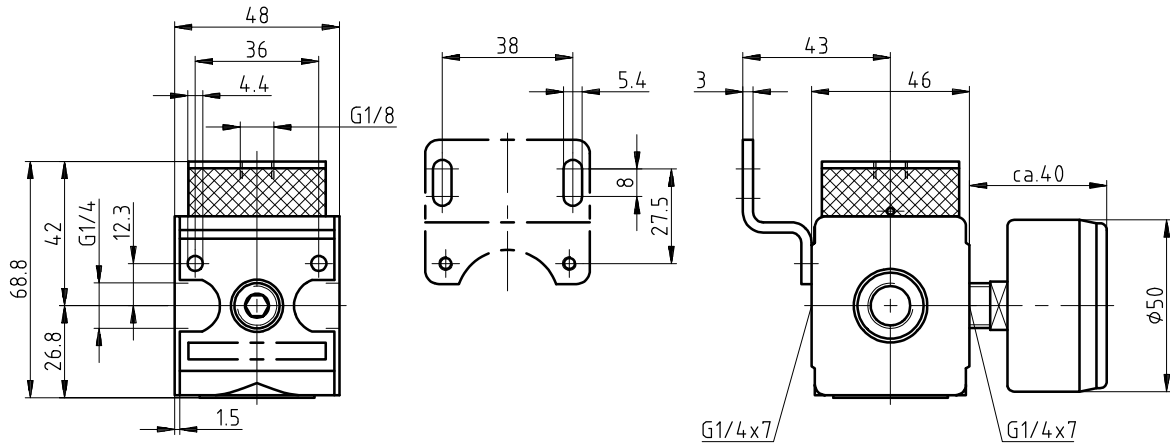
| port size |             |
|-----------|-------------|
| 1         | 11 G 1/4    |
|           |             |
|           |             |
| options   |             |
| 2         | G gauge ø50 |
|           |             |
|           |             |
|           |             |
|           |             |
|           |             |
|           |             |
|           |             |

page: RI.11 (04/99)

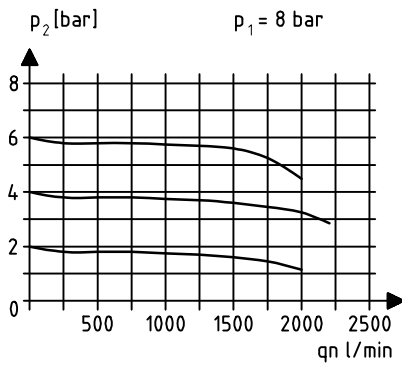
## application information

- easy block assembly for components to be connected in series
- interlocking of several individual devices requires coupling kit(s) KP.11
- interlocking of several individual devices with narrow distributor Z.11 , requires coupling kit(s) KP.11 Z

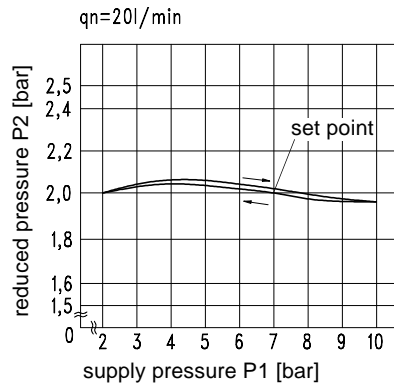
## dimensions (mm)



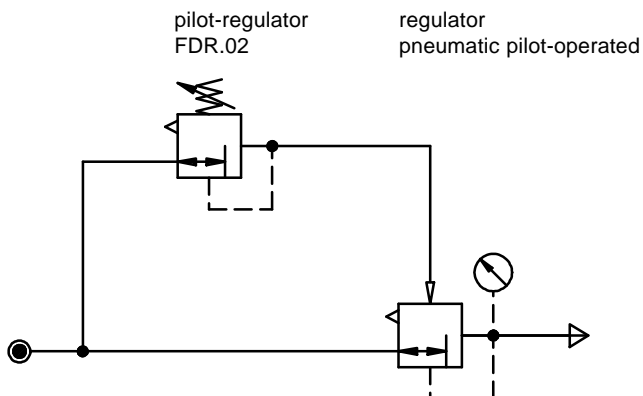
## flow characteristics



## pressure characteristic

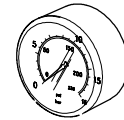


## extendible application



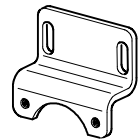
## accessories

gauge



type:  
G 50. 3/ 6 R  
G 50. 6/10 R  
G 50.10/16 R  
G 50.16/25 R

mounting bracket



type: ZW.11