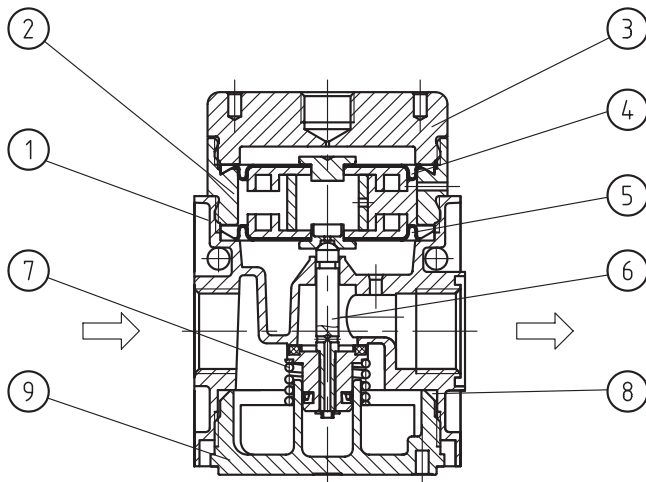


# Regulator G 1/2, G 3/4

item	type	RI.33	RI.34
port size		G 1/2	G 3/4
description		air line regulator with diaphragm and relieving feature pneumatic pilot-operated	
media		compressed air, neutral gases	
mounting		arbitrary	
supply pressure		Pe max. 16 bar	
reduced pressure		equal to the pilot-regulator (Pa max. 16 bar)	
media and ambient temperature		max. +60 °C	
fixing		bracket or through 2 holes in the body	
weight		0,810 kg (0,720 kg without gauge)	



technical modifications keep in reserve!



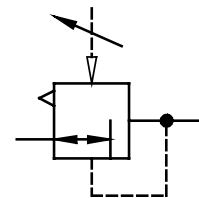
## replacement parts

(repair kit: ESA-RI.33)

no	description	material	order-no.
1	body	Z 410	---
2	control pressure top	R.33-17 Ms	2.1733.17.000
3	bonnet	R.33-16 Ms	2.1733.16.000
4	diaphragm assembly	NBR - Ms	
5	diaphragm assembly	NBR - Ms	
6	valve cone	NBR - Ms	
7	spring	C.33-22 Niro	5.2133.22.000
8	o-ring 50 x 2	NBR	
9	bonnet	R.33-10 POM	3.1733.10.000

## application information

- easy block assembly for components to be connected in series
- interlocking of several individual devices requires coupling kit(s) KP.33
- interlocking of several individual devices with narrow distributor Z.33 , requires coupling kit(s) KP.33 Z



## Series 3

ordering information

RI. 33 \*

type

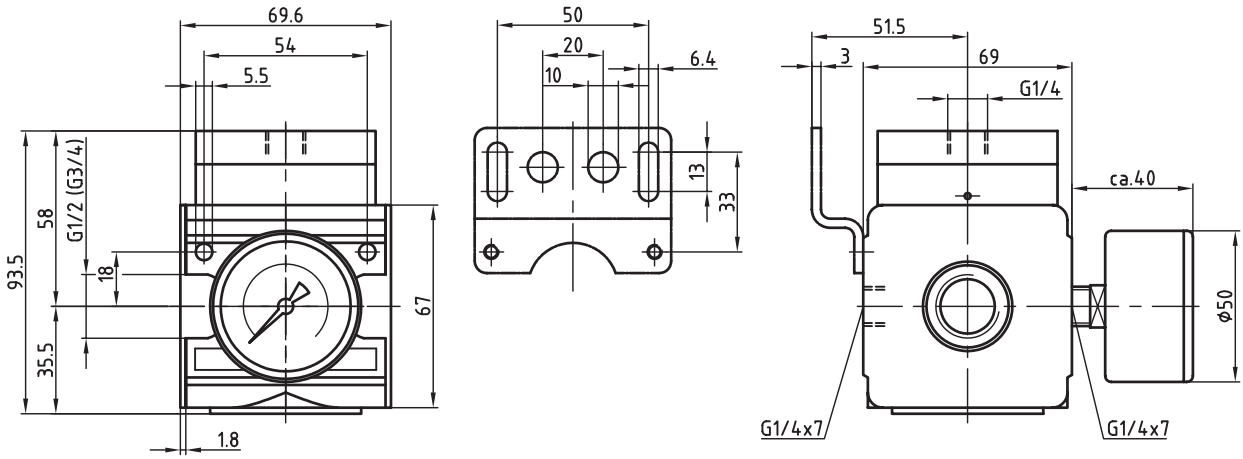
1 port size  2 option

ordering example: RI.33

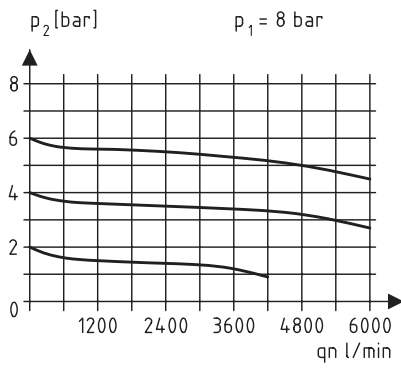
port size	
1	33 G 1/2
	34 G 3/4
options	
G	gauge ø50
2	

page: RI.33 (02/06)

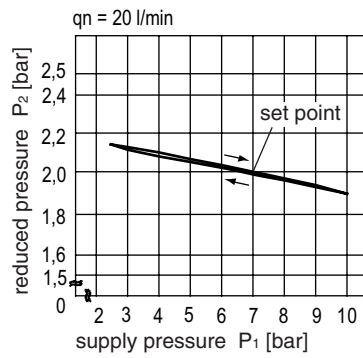
## dimensions (mm)



## flow characteristics

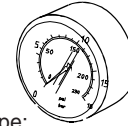


## pressure characteristic



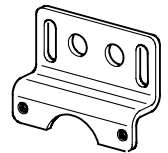
## accessories

gauge



type:  
G 50. 3/ 6 R  
G 50. 6/10 R  
G 50.10/16 R  
G 50.16/25 R

mounting bracket



type: ZW.33

## extendible application

