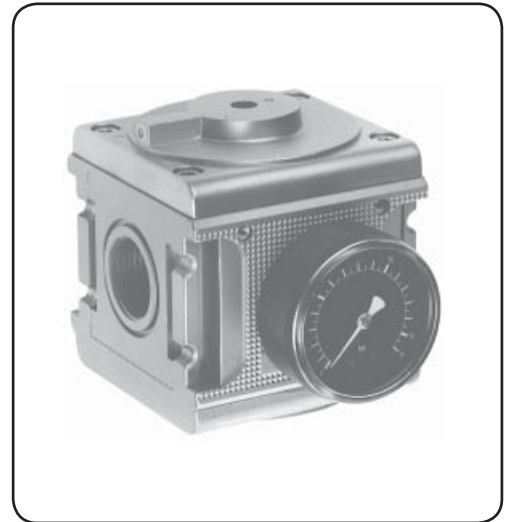


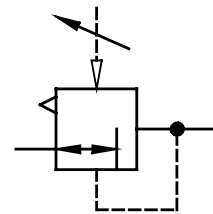
type	RI.54	RI.55	
item			
port size	G 3/4	G 1	
description	air line regulator with diaphragm and relieving feature, pneumatic pilot-operated		
mounting	arbitrary		
supply pressure	Pe max. 25 bar		
reduced pressure	equal to the pilot-regulator (Pa max. 16 bar)		
media and ambient temperature	max. 60°C		
fixing	install in pipe line, bracket		
weight	1,439 kg 1,345 kg without gauge		



technical modifications keep in reserve!

replacement parts ☞ (repair kit: ESA-RI.55)

no	description	material	order-no.
1	body	Al	---
2	diaphragm	NBR-brass-Al	---
3	valve cone	brass-NBR	---
4	regulating spring	C.55-22 stainless steel	5.2155.22.000
5	O-ring 81x2	NBR	---



Series 5

ordering information

RI. ** *

type

port size option

ordering example: RI.55

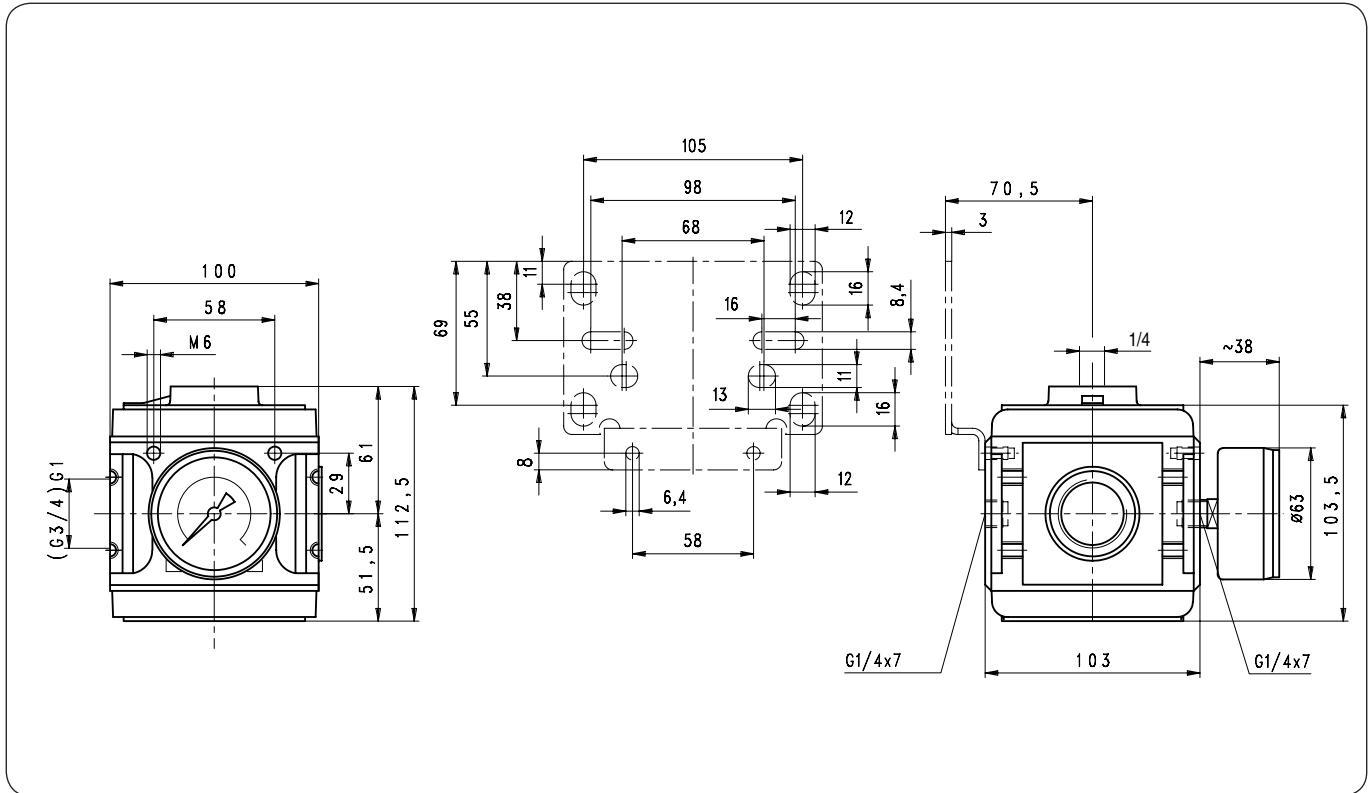
port size	
1	54 G 3/4
	55 G 1
options	
2	G gauge ø 63

page: RI.55 (05/07)

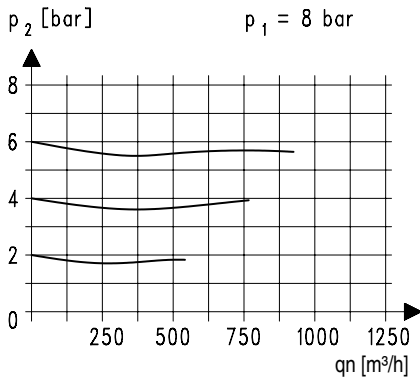
application information

- easy block assembly for components to be connected in series
- interlocking of several individual devices requires coupling kit(s) KP.55
- interlocking of several individual devices with narrow distributor Z.5- or bal valve K.55 requires coupling kit(s) KP.55 Z

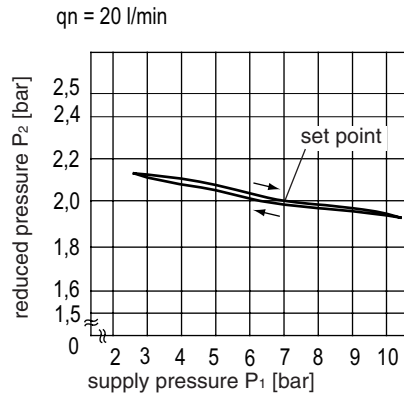
dimensions (mm)



flow characteristics

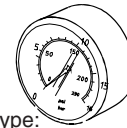


pressure characteristic



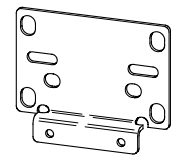
accessories

gauge



type:
G 63. 3/ 6 R
G 63. 6/10 R
G 63.10/16 R
G 63.16/25 R

mounting bracket



type: ZW.55

extendible application

pilot-regulator
FDR.02

regulator
pneumatic pilot-operated

