

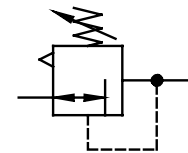
type	RP.33		
item			
port size	G 1/2		
medium	compressed air, neutral gases		
description	air line regulator with diaphragm and relieving feature		
mounting	arbitrary		
supply pressure	Pe max.16 bar		
reduced pressure	Pa 0,2-6 bar standard, 0,1-3 bar, 0,5-10 bar		
air consumption	2,6 l/min, depend upon secondary pressure		
media and ambient temperature	max. 60°C (oth. temperature ranges available upon request)		
fixing	panel mounting, bracket or through 2 holes in the body		
weight	0,935 kg. (0,850 kg without gauge) 1,044 kg type with lock device		



technical modifications keep in reserve!

replacement parts ☞ (repair kit: ESA-RP.33)

no.	description	material	order-no.
1	body	Z 410	---
2	spring cage	C.33-77 POM / brass	8.2133.77.000
3	diaphragm assembly	NBR - brass	☞
4	regulating spring 0-6 bar	C.33-7 steel-galvanized	5.2133.07.000
5	valve cone	NBR - brass	☞
6	spring	RP.33-10 stainless steel	5.6233.09.000
7	o-ring 50x2	NBR	☞
8	bonnet	RP.33-10 PBT	3.6233.10.000
9	spring cage lockable	C.33-K POM - Al	8.2133.72.001
10	lock cylinder	C.33-52 brass	5.2133.52.000



series 3

ordering information

RP. 33 * *

type	reduced pressure
[1] port size	[2] option

ordering example: RP.33 G S 0,1-3

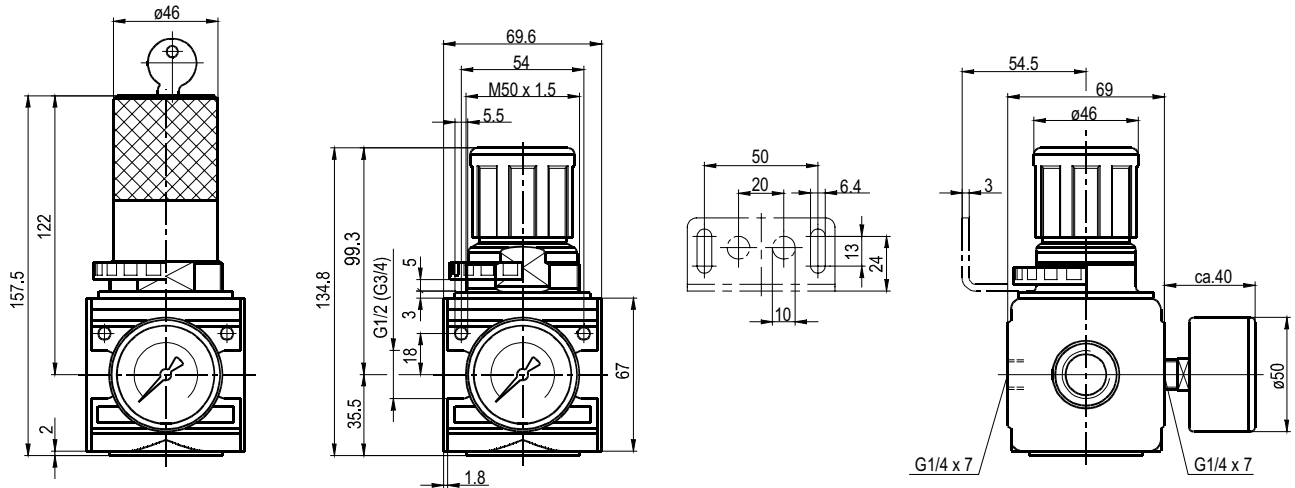
port size	
1	33 G 1/2
options	
2	G gauge ø50
	S panel mounting
	K keylock

page: RP.33 (05/06)

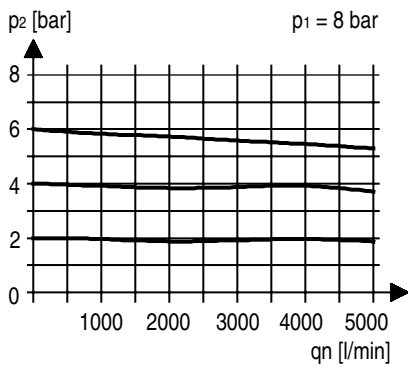
application information

- easy block assembly for components to be connected in series
- interlocking of several individual devices requires coupling kit(s) KP.33
- interlocking of several individual devices with narrow distributor Z.33, requires coupling kit(s) KP.33 Z
- adjusting knob can be locked by depressing

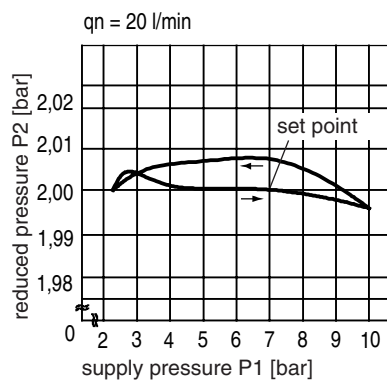
dimensions (mm)



flow characteristics

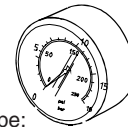


pressure characteristic



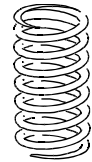
accessories

gauge



type:
G 50. 3/ 6 R
G 50. 6/10 R
G 50.10/16 R
G 50.16/25 R

spring



type:
0,1- 3: C.33- 6
0,5-16: C.33-66

panel mounting ring M 50 x 1,5



type: C.33-42

mounting bracket



type: ZW.33



type: MW.50