

New

Standard executions		
Version	Symbol	Type
Double acting		RDX
Double acting magnetic		RDMX
Double acting magnetic with cushionings (only for bores 32 and 40)		RDMAX



	II 2Gc IIC T5 II 2Dc T100°C
--	--------------------------------

On request, they can be supplied according to 2014/34/EU - ATEX

Series of stainless steel cylinders not conforming to standards. The heads are connected with the body through rolling: this guarantees perfect tightening. Dumpers are in nitrile rubber to cushion the impact of the piston. RDMAX type are provided with adjustable cushionings at both ends (available only for bores 32 and 40 mm). The standard cylinders are provided with rod nut. One or more magnetic reed switches can be applied to the magnetic types.

Options	Suffix
Through rod	P
Seals FKM -20°C ÷ +150°C	V
Low temperature seals -40°C ÷ +80°C	BT
Low friction	L
High chemical resistant rod scraper (P5600)	C1
Special versions on request	/ S

For the magnetic reed switches type ASV see from page 1.110.1
 For mounting accessories see from page 5.35.1
 For rod accessories see from page 5.20.1

How to order: 40 / 50 RDMXP

40	/	50	RDMX	P
Bore	/	Stroke	Type	Option

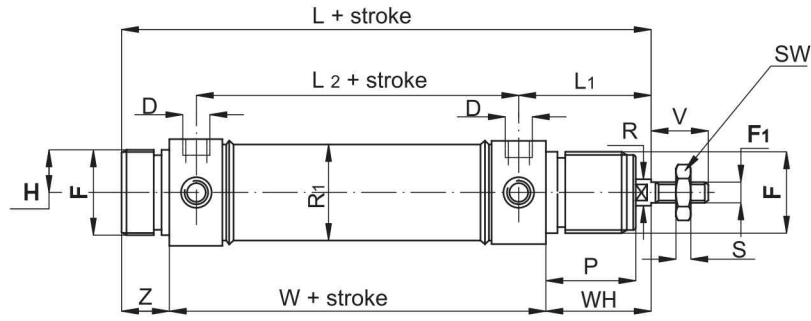
The options can be combined (when this is possible)

Technical data			
Fluid	Compressed filtered air with or without lubrication. Lubrication, if started, must be continued.		
Pressure	max 10 bar		
Temperature range	-30°C ÷ +80°C (standard)	-20°C ÷ +150°C (V)	-40°C ÷ +80°C (BT)
Materials	Heads:	Stainless Steel AISI 304	
	Tube:	Stainless Steel AISI 304	
	Rod:	Stainless Steel AISI 316	
	Piston:	Aluminium	
	Seals:	Polyurethane	

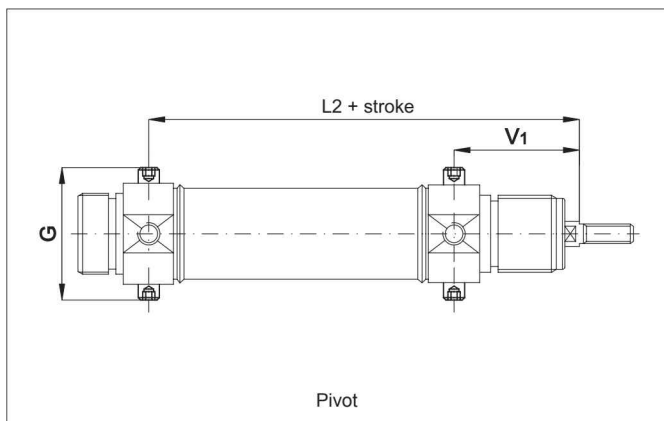
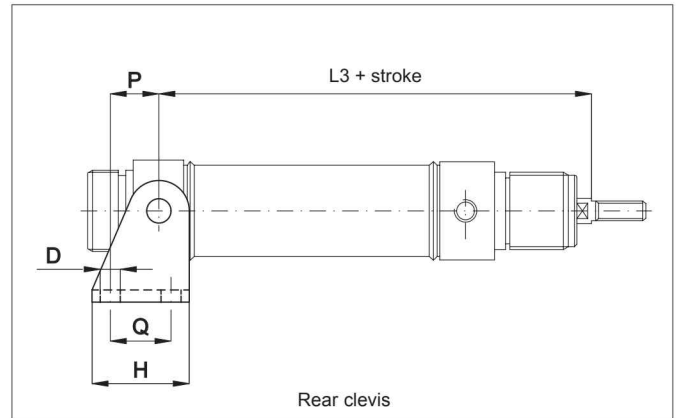
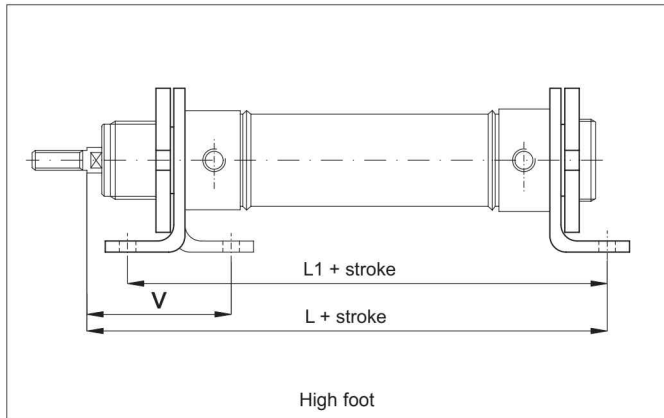
Bore (mm)	Standard strokes (mm)	Max stroke (mm)
32	25, 50, 80, 100, 125, 160, 200, 250, 320, 400, 500	1000
40		
50		
63		

See page 1.1.3 to calculate the double acting cylinder force. Seal kits not available for these cylinders.

Type: RDX-RDMX-RDMAX



Ø mm	V	F	P	D	F ₁	R	L ₂	Z	WH	W	L ₁	L	R ₁	H	S	SW
32	20	M30x1,5	30	1/8"	M10x1,5	12	78	14	38	96	47	148	33,6	17,5	6	17
40	24	M38x1,5	35	1/4"	M12x1,75	16	89	16	45	113	57	174	41,6	21	7	19
50	32	M45x1,5	38	1/4"	M16x2	20	96	18	50	120	62	188	52,4	26,5	8	24
63	32	M45x1,5	38	3/8"	M16x2	20	98	18	50	124	63	192	65,4	32,5	8	24



Ø mm	L	L ₁	L ₂	L ₃	V	V ₁	P	H	Q	G	D
32	148	124	125	125	48	47	20	40	24	51	7
40	153	153	146	146	60	57	27	50	30	61	9
50	160	160	158	158	64	62	30	54	34	75	9
63	164	164	161	161	65	63	34	65	35	92	9