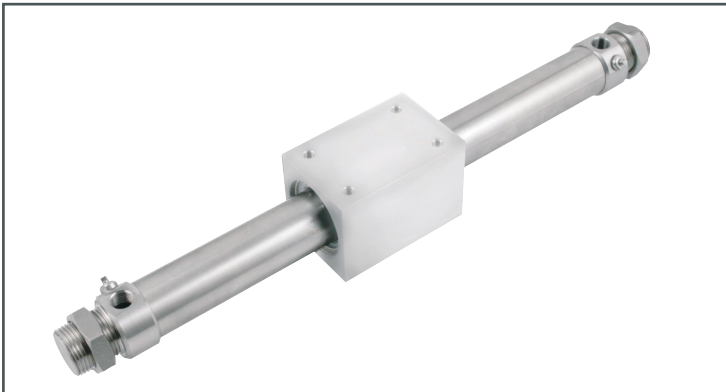


Ø20 - Ø40 - RODLESS CYLINDER

Type 4040

27/0-17 Vers. 4



ART. NO.

U020 0000 4040
U025 0000 4040
U032 0000 4040
U040 0000 4040

Rodless cylinder (Ø20 - Ø40):

Cylinder 4040 is a standard UNIC Stainless Steel Cylinder® without piston rod. Cylinder 4040 is equipped with an adjustable end stroke cushioning and fitted with nitrile rubber (NBR) / polyurethane (PU) packings.

Max pressure: 10 bar.

Temperature: -20°C til +80°C

Standard Stroke: 10-500 mm.

MATERIAL

Housing: POM-C FG (Food approved)
PTFE (Heat-resistant version)
Cylinder pipe and end caps: AISI 304 / (WST. 1.4301)

CHEMICAL RESISTANCE

The cylinder is delivered as chemical-resistant.

ASSEMBLY

All cylinders are assembled by thread and are therefore easy to service.

HEAT-RESISTANT +150°C

* On request.

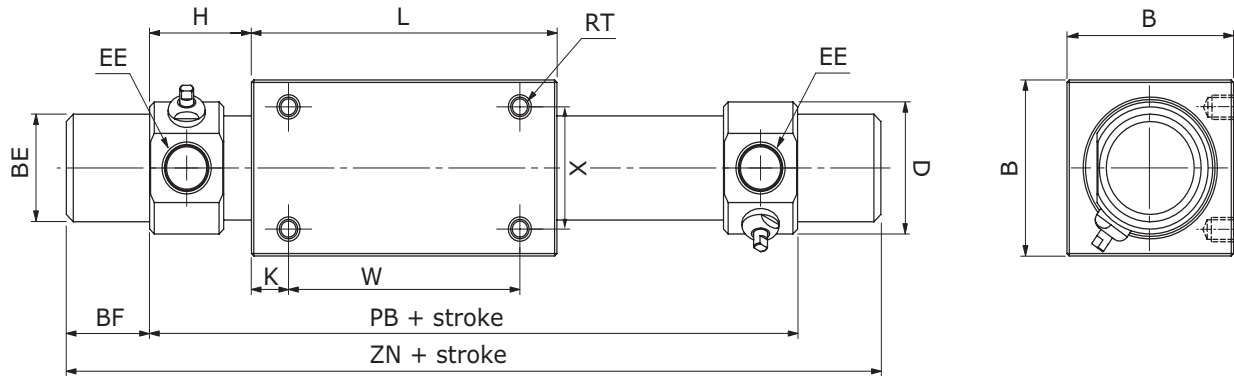
ORDER SAMPLE

Order sample for heat-resistant and chemical-resistant cylinder.

Heat-resistant cylinder: U025 0050 4040**H** (* On request)

MEASUREMENT FORM (MM)

Type 4040



Cyl.Ø	EE	B	BF	H	D	K	L	RT	BE	PB	W	X	ZN
20	1/8"	36	18	27	19	8	66	M4	M22x1,5	104	50	25	140
25	1/8"	46	21	30	20,5	10	70	M5	M22x1,5	109	50	30	151
32	1/8"	60	20	33,6	22	15	80	M6	M30x1,5	135	50	40	175
40	1/4"	70	22	46	29	16	92	M6	M38x1,5	148	60	40	192

THEORETICAL CYLINDER FORCES

IN NEWTON

Cyl. Ø	Piston area cm ²	2 bar	3 bar	4 bar	5 bar	6 bar	7 bar
20	3,14	58	88	117	147	176	205
25	4,90	88	137	186	235	284	333
32	8,04	156	235	313	392	470	549
40	12,5	245	372	490	617	735	862

LOAD AND TORQUE

Cyl. Ø	Horizontal load W (kg)	Safe moment Mp (kgf · m)
20	1,1	2,45
25	1,2	3,92
32	1,5	8,83
40	2,0	13,7

