

SLB Series

Thin Lip Flow Gripper



Features

- ◇ Simple structure, integrated with vacuum pump, easy to maintain
- ◇ Large vacuum flow, mainly used in handling objects like perforated plate, food, irregular parts, etc.

How to order

SLB 50 N - M10 T- F1

① ② ③ ④ ⑤ ⑥

① Series	② Diameter of suction cup	③ Material of suction cup
SLB	30 - Φ 30mm 50 - Φ 50mm	N - NBR 70 WS - White silicone 50 E - EPDM 70
④ Specification of vacuum pump	⑤ Exhaust direction	⑥ Mounting(Flange)
M7 - Airway Φ 7mm vertical exhaust M10 - Airway Φ 10mm vertical exhaust M20 - Airway Φ 20mm vertical exhaust M30 - Airway Φ 30mm vertical exhaust P7 - Airway Φ 6.5mm vertical exhaust	S - Vertical exhaust(With silencer) T - Vertical exhaust(With pagoda fitting)	F1 - 55 \times 6mm F3 - 63 \times 11mm F4 - 95 \times 11mm F6 - 110 \times 13mm F7 - 75 \times 45mm

Selection

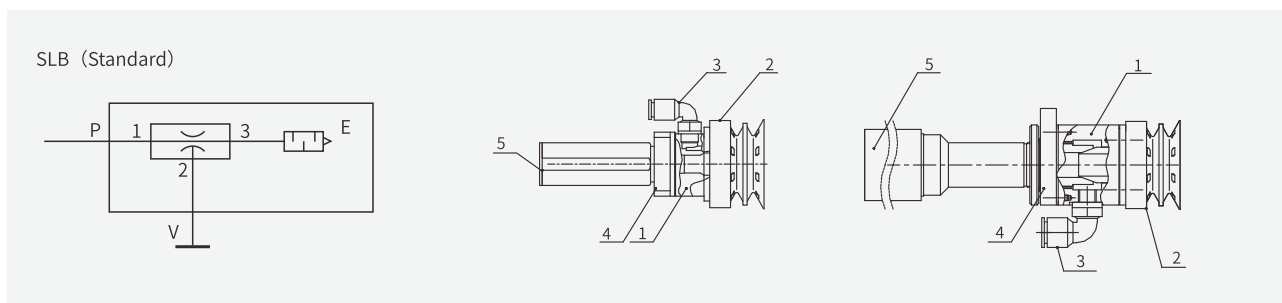
Series	Diameter of suction cup	Specification of vacuum pump	Exhaust direction		Mounting				
			T	S	F1	F3	F4	F6	F7
SLB	30	M7/M10	●	—	●	●	—	—	—
			—	●	●	●	—	—	—
SLB	50	M10	●	—	●	●	—	—	—
			—	●	—	●	—	—	—
		M20	●	●	—	—	●	—	—
		M30	●	●	—	—	—	●	—
		P7	—	●	—	—	—	●	—
P15	—	●	—	—	—	—	—	●	

◇ Note: "●"- standard, in stock. "—" - unavailable.

SLB Series

Thin Lip Flow Gripper

Air circuit diagram/Structural diagram



Main parts	No	Item	Material	No	Item	Material
	1	Vacuum pump	Aluminum alloy	4	Clamp, Flange	Aluminum alloy
	2	Suction cup	N / WS / E	5	Silencer	
	3	Air inlet fitting	Brass			

Technical parameters

Model	Working temperature (°C)	Operating pressure range (bar)	Air supply pressure (bar)	Max. vacuum flow (NL/min)	Max. air consumption (NL/min)	Max. vacuum level (-kPa)
SLB30-M7	0-60(Non-freezing)	1-7	5.0	320	70	8
SLB30/50-M10				540	165	13
SLB50-M20				1,720	245	5
SLB50-M30				2,320	375	4
SLB50-P7				280	340	70
SLB50-P15				1,650	660	30

Vacuum flow (NL/min) at different vacuum levels (-kPa)

Model	Air supply pressure bar	Air consumption NL/min	0	1.5	2.5	3.5	4.5	5.5	6.5	7.5	13	Max. vacuum level (-kPa)
SLB50-M7	5.0	70	320	270	220	180	130	90	—	—	—	8
SLB50-M10	5.0	165	540	520	460	410	340	290	240	160	90	13
SLB50-M20	5.0	245	1,720	1,680	1,380	1,180	950	—	—	—	—	5
SLB50-M30	5.0	375	2,320	2,120	1,870	1,580	—	—	—	—	—	4

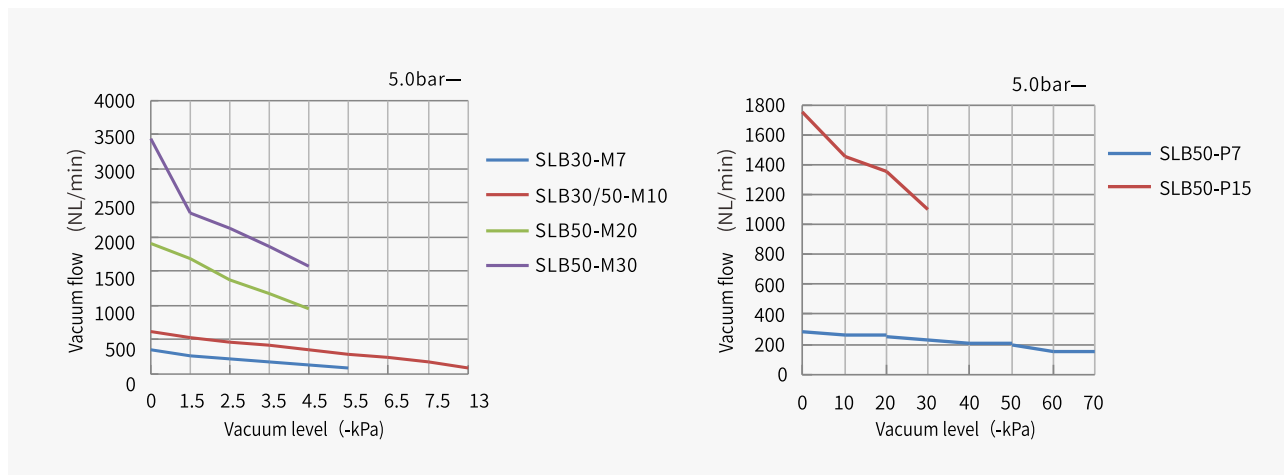
Vacuum flow (NL/min) to reach different vacuum levels (-kPa)

Model	Air supply pressure bar	Air consumption NL/min	0	10	20	30	40	50	60	70	Max. vacuum level (-kPa)
SLB50-P7	5.0	340	280	260	250	230	210	200	150	140	70
SLB50-P15	5.0	660	1,650	1,450	1,350	1,100	—	—	—	—	30

SLB Series

Thin Lip Flow Gripper

Technical parameters

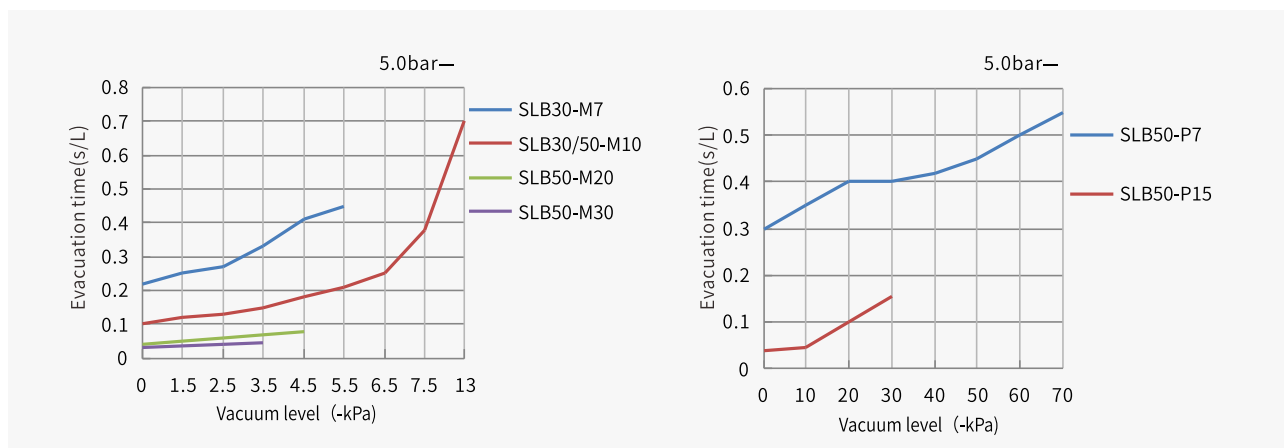


Evacuation time(s/L) at different vacuum levels(-kPa)

Model	Air supply pressure (bar)	Air consumption (NL/min)	Vacuum level (-kPa)										Max. vacuum level -kPa
			0	1.5	2.5	3.5	4.5	5.5	6.5	7.5	13		
SLB30-M7	5.0	70	0.22	0.25	0.27	0.33	0.41	0.45	—	—	—	—	8
SLB30/50-M10	5.0	165	0.1	0.12	0.13	0.15	0.18	0.21	0.25	0.38	0.7	13	
SLB50-M20	5.0	245	0.04	0.05	0.06	0.07	0.08	—	—	—	—	5	
SLB50-M30	5.0	375	0.03	0.035	0.04	0.045	—	—	—	—	—	3.5	

Evacuation time(s/L) to reach different vacuum levels(-kPa)

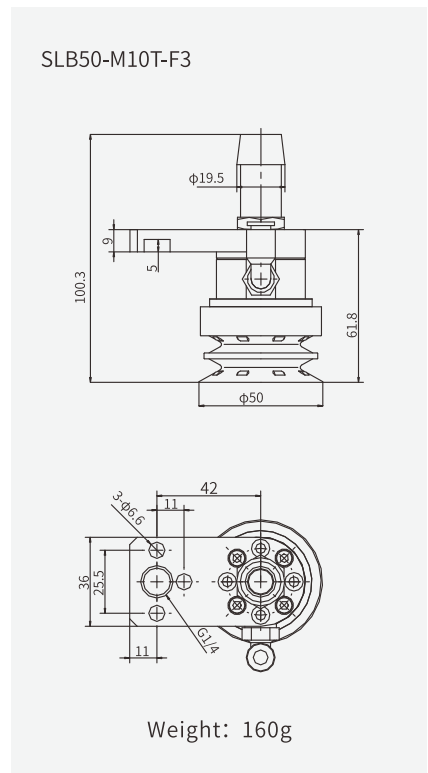
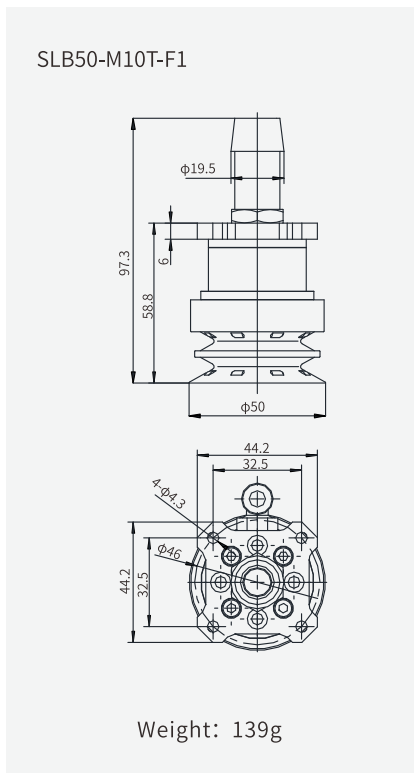
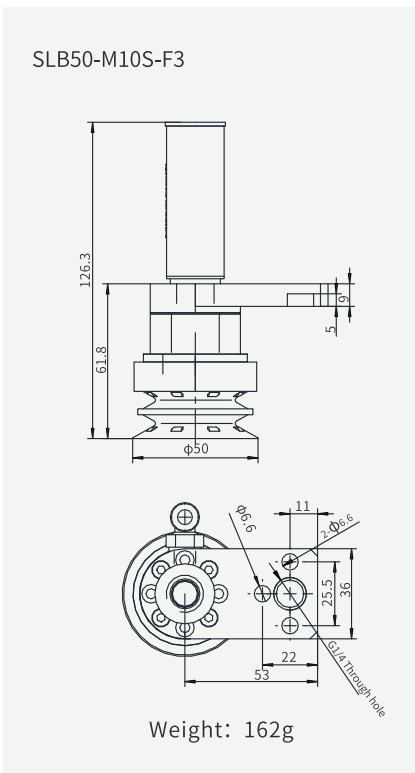
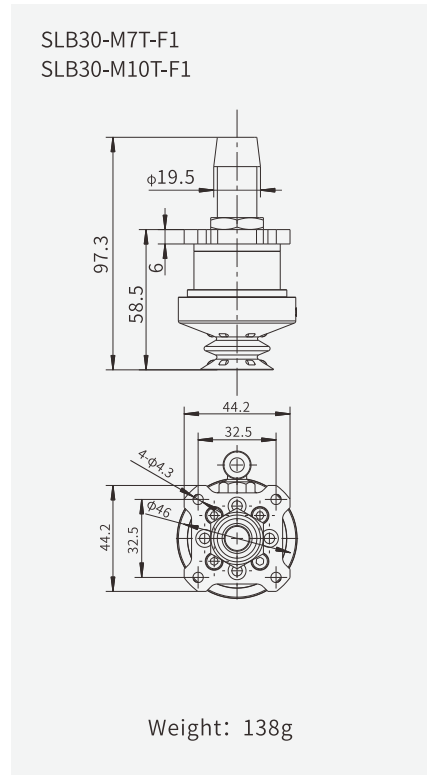
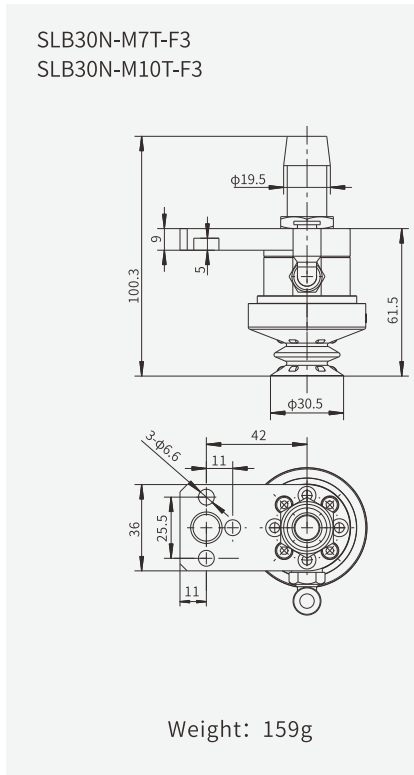
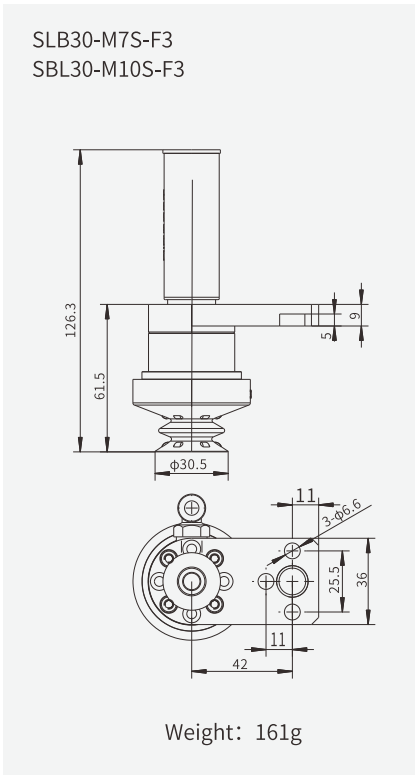
Model	Air supply pressure (bar)	Air consumption (NL/min)	Vacuum level (-kPa)									Max. vacuum level (-kPa)
			0	10	20	30	40	50	60	70		
SLB50-P7	5.0	340	0.3	0.35	0.37	0.4	0.42	0.45	0.5	0.55	70	
SLB50-P15	5.0	660	0.04	0.045	0.1	0.055	—	—	—	—	30	



SLB Series

Flow Gripper

Dimensions (mm)

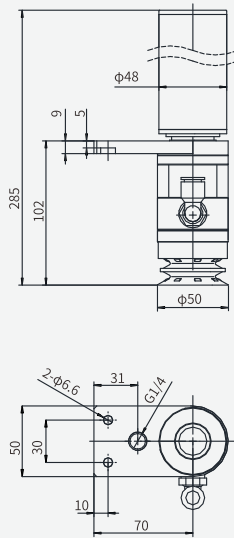


SLB Series

Flow Gripper

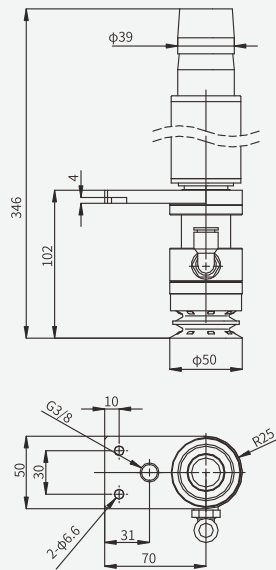
Dimensions (mm)

SLB50-M20S-F4



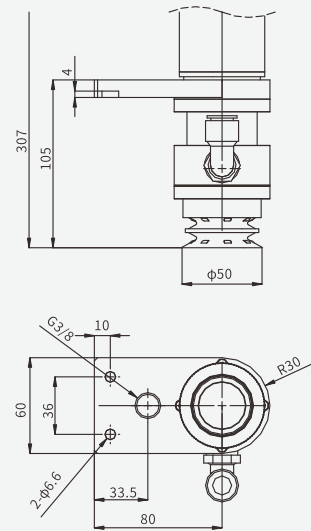
Weight: 692g

SLB50-M20T-F4



Weight: 796g

SLB50-M30S-F6



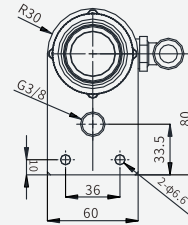
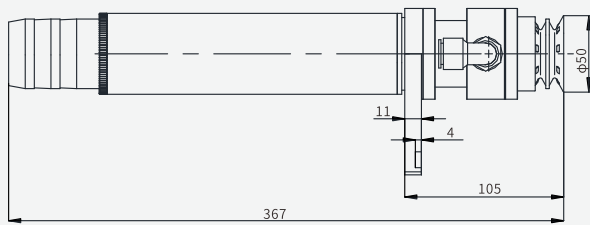
Weight: 925g

SLB Series

Flow Gripper

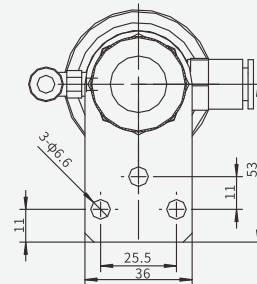
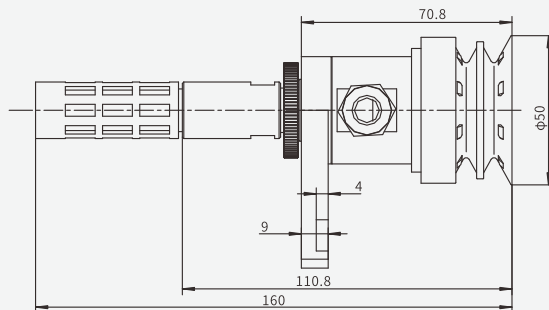
Dimensions (mm)

SLB50-M30T-F6



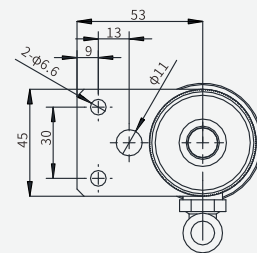
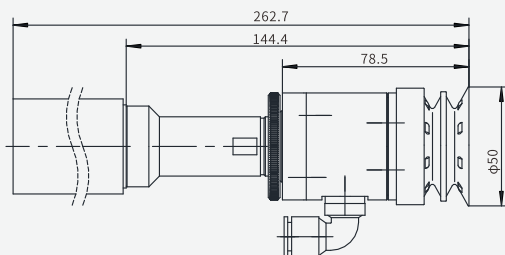
Weight: 925g

SLB50-P7S-F6



Weight: 276g

SLB50-P15S-F7



Weight: 477g