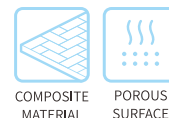


SNT Series

Non-contact Suction Cup



Special Vacuum Gripper

SNT

SLP

SLB

Features

- ◇ The suction cup “floats” on an air cushion for non-contact handling of workpiece.
- ◇ Low vacuum level, high vacuum flow and good compensation for air leakage.
- ◇ Safely separates thin and porous workpieces without sucking air through the workpiece.
- ◇ Various material for cushion on the bottom, which can meet kinds of requirements such as high temperature, mark free, food and wear resistance.
- ◇ Built-in vacuum pump based on Bernoulli principle, no additional vacuum pump required.

Applications

- ◇ Handling fragile workpiece.
- ◇ Paper
- ◇ Film
- ◇ Biscuit
- ◇ PCB
- ◇ Silicon wafer
- ◇ Solar cell

How to order

SNT 20 P - S N

① ② ③ ④ ⑤

① Series	② Dimension	③ Body material	④ Flow type	⑤ Cushion material
SNT	20 - φ20mm	Nil - Aluminum alloy	S - Standard flow	N - NBR
	30 - φ30mm	P - POM (Food-grade)		PM - POM (Food-grade)
	40 - φ40mm			PK - PEEK (Mark free)
	60 - φ60mm			
	100 - φ100mm			
	120 - φ120mm			

Selection

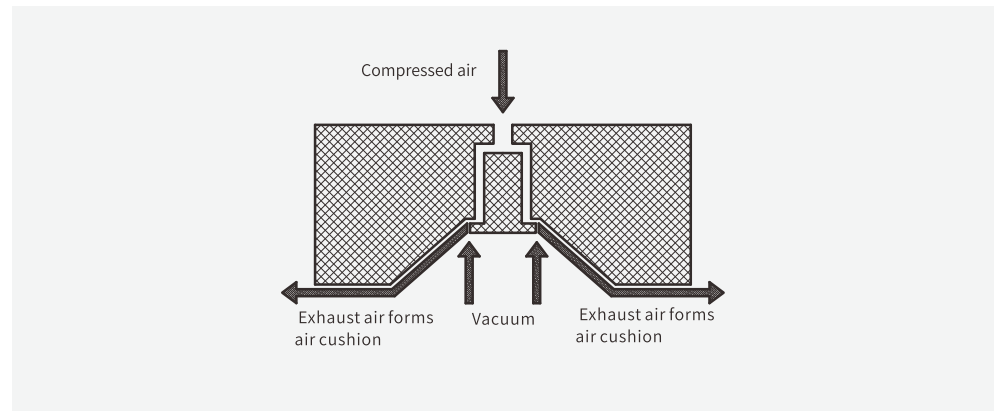
Model	Body material	Flow type S	Cushion material		
			N	PM	PK
SNT20-120	Nil - Aluminum alloy	●	●	—	●
	P (POM)	●	—	●	—

◇Note: "●"-standard, in stock. "—"-unavailable.

SNT Series

Non-contact Suction Cup

Working principle

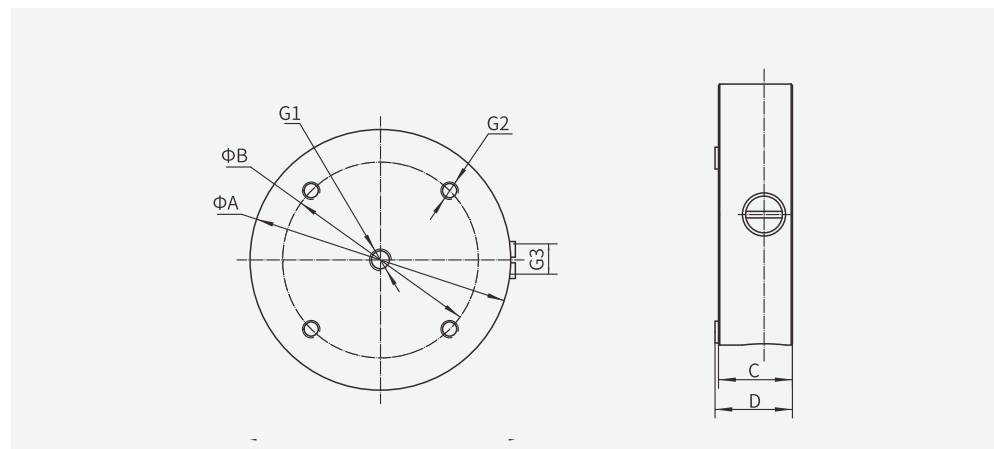


Technical parameter

Model	Pull-out force (N)	Air consumption (NL/min)	Air supply pressure (bar)	Working temperature (°C)	Weight (g)
SNT20	2	80	5.0	0-60	9.5
SNT30	4	100			32
SNT40	6.5	130			51
SNT60	13	150			116
SNT100	46	350			252
SNT120	89	420			365

◇ Note: The tested workpiece is rigid and airtight, air supply pressure range 1-6bar, vertical action. The specified pull-out force does not include a safety factor.

Dimensions (mm)



Model/Size	A	B	C	D	G1	G2	G3
SNT20	20	15	12	12.8	M5	4-M3 Depth 5	—
SNT30	32	22	17	17.8	M5	4-M4 Depth 6	M5
SNT40	40	32	17	17.8	G1/8	4-M4 Depth 6	G1/8
SNT60	60	45	17	17.8	G1/8	4-M4 Depth 6	G1/8
SNT100	100	75	17	17.8	G1/8	4-M4 Depth 6	G1/8
SNT120	120	105	17	17.8	G1/8	4-M4 Depth 10	G1/8