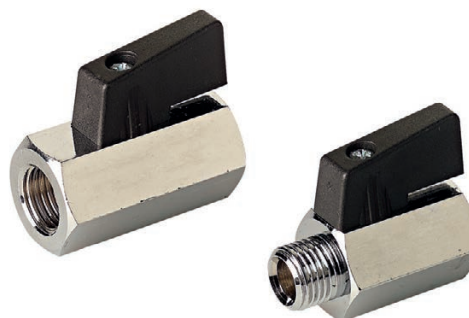


Ancillary valves

Miniature ball valves from brass hexagonal bar

Standard executions			
Version	Symbol	Code	Item
1/8" female - female black lever		030501	1MVSFF
1/4" female - female black lever		030502	2MVSFF
3/8" female - female black lever		030503	3MVSFF
1/2" female - female black lever		030504	4MVSFF
3/4" female - female black lever		030505	5MVSFF
1/8" male-female black lever		030601	1MVSMF
1/4" male-female black lever		030602	2MVSMF
3/8" male-female black lever		030603	3MVSMF
1/2" male-female black lever		030604	4MVSMF
3/4" male-female black lever		030605	5MVSMF

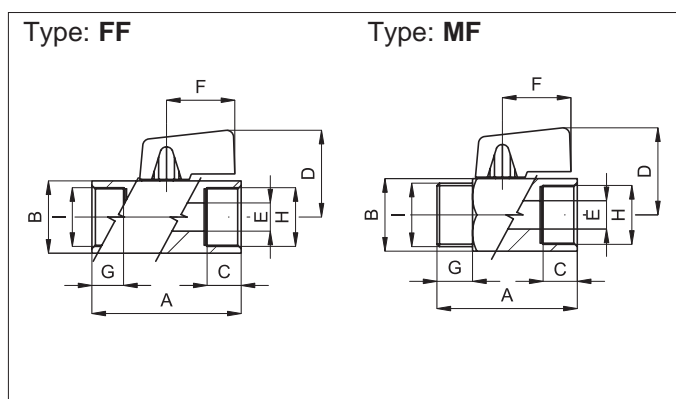


Series of miniature ball valves from brass hexagonal bar and manually operated. In line mounting they work to close or open the flow in both directions.

How to order: 1MVSFFR

1MVSFF	R
Version	Option

Options	Suffix
Red lever	R
Special versions on request	/ S



H	G	C	A	B	D	E	F
1/8"	9	9	39	21	27	6	22
1/4"	9	9	39	21	27	8	22
3/8"	10	9	41	21	27	8	22
1/2"	10,5	10,5	45	25	29	10	22
3/4"	13,5	13,5	51	30	31,5	12	22

Technical data	
Fluid	Compressed filtered air with or without lubrication.
Pressure range	0 ÷ 10 bar
Temperature range	-10 °C ÷ + 90 °C
Orifice	See the dimension E in the table
Mounting	In-line
Materials	Body: Nickel-plated brass Lever: Nylon 66, reinforced glass Seals: PTFE - NBR Ball: Nickel plated brass