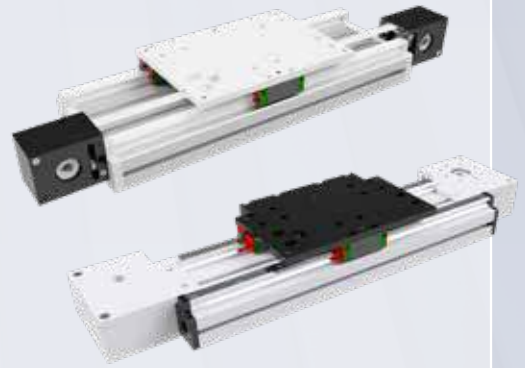


LTY SERIES

Linear units with toothed belt drive and double rail guide system



- Basic extrusion profile 45 x 135 or 45 x 180 mm
- Rail Guide system size -20- with 3 or 4 LM blocks
- Very heavy load capacity
- Toothed belt type AT10, 16 or 25 mm wide

Technical data*

LTY series

Maximum stroke length	mm	12.000
Maximum speed	mm/s	3.000
Maximum acceleration	m/s ²	30
Max. driving torque	Nm	34
Repeatability	mm	± 0,1
Movement per revolution	mm	200

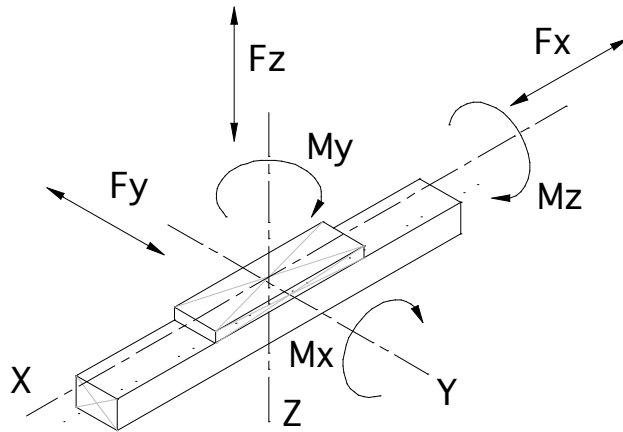
*The values shown are theoretical maximum ratings. A suitable safety factor should always be applied based on application requirements.

LTY SERIES

TECHNICAL DATA*

LOAD CAPACITY		LTY135	LTY180
Mx	Nm	1.600	1.600
My	Nm	1.780	1.900
Mz	Nm	1.250	1.250
Fx	N	2.100	2.100
Fy	N	14.800	14.800
Fz	N	14.800	14.800

*Please ask us for specific calculations of the guide system.



MOMENT OF INERTIA (NMM²)

	LTY135	LTY180
Elx	7,046*10 ¹⁰	8,586*10 ¹⁰
Ely	3,759*10 ¹⁰	8,505*10 ¹⁰

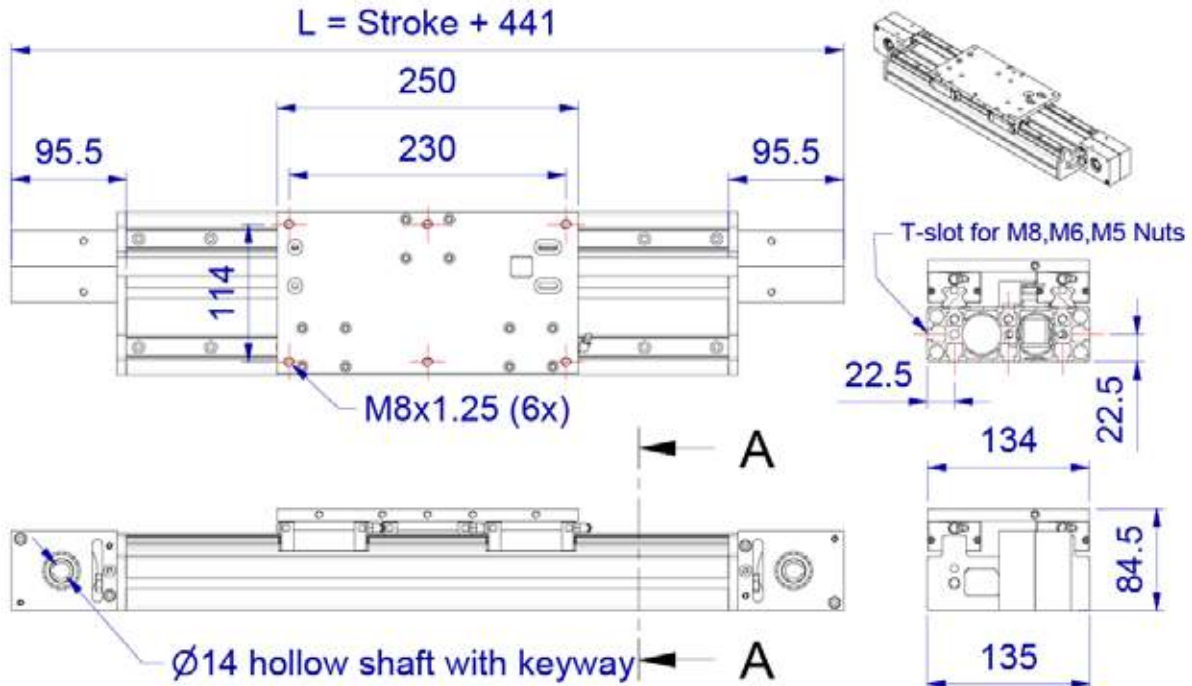
WEIGHTS (KG)

	LTY135	LTY180
Unit weight 0 mm stroke	6,45	7,26
Weight per 100 mm stroke	1,05	1,23
Mass of carriage	0,90	1,20

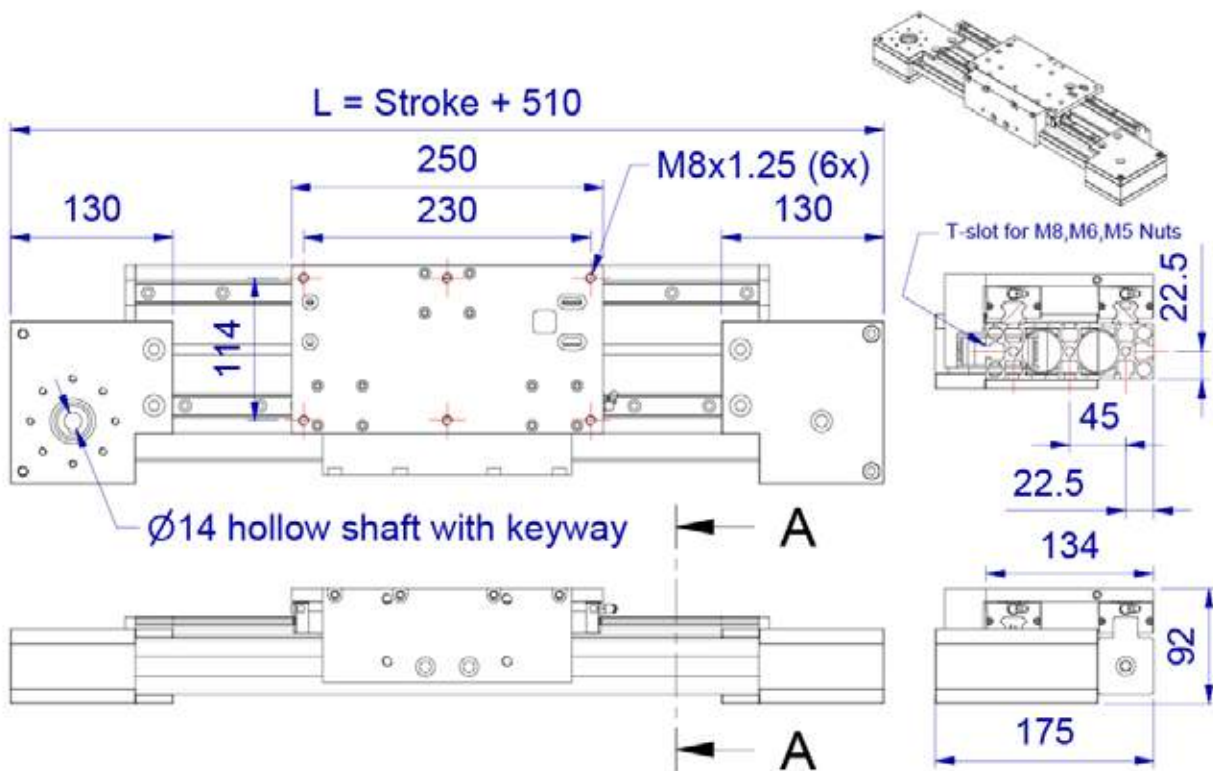
LTY SERIES

DIMENSIONS

DIMENSIONS LTY135-TR-S20T-D1



DIMENSIONS LTY135-TR-S20T-S1

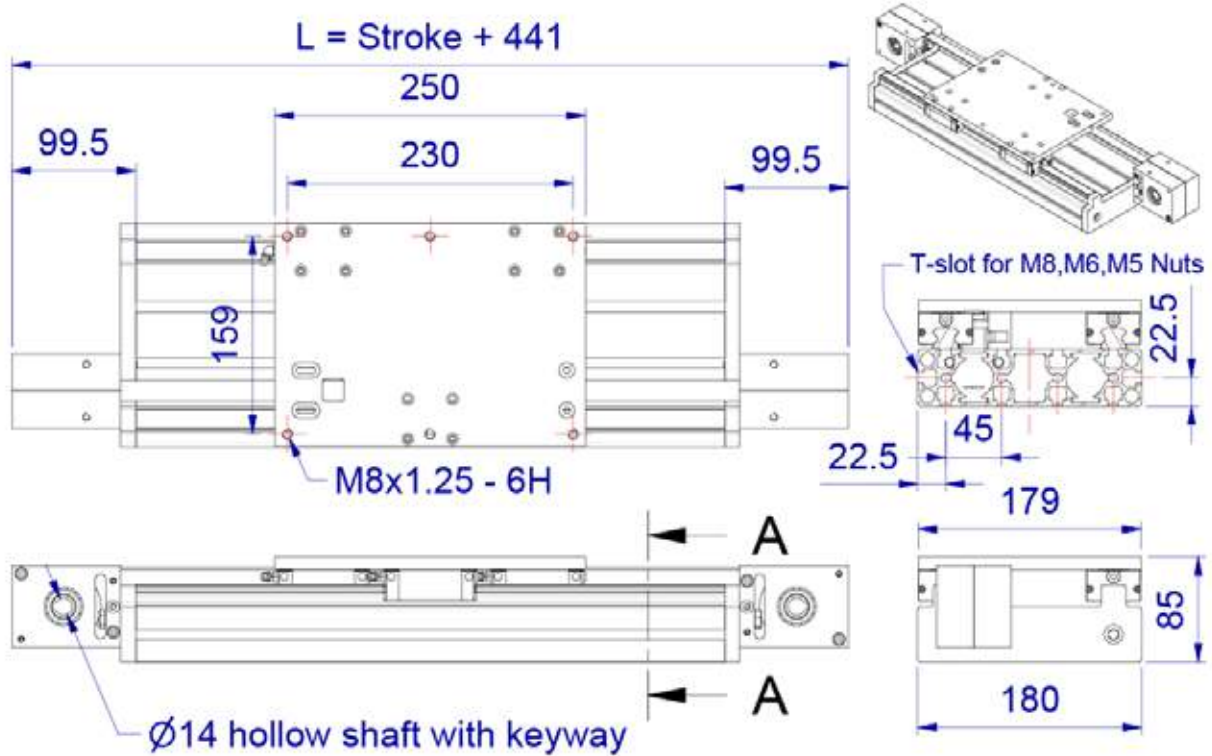


All drawings can be downloaded from www.almotion.nl

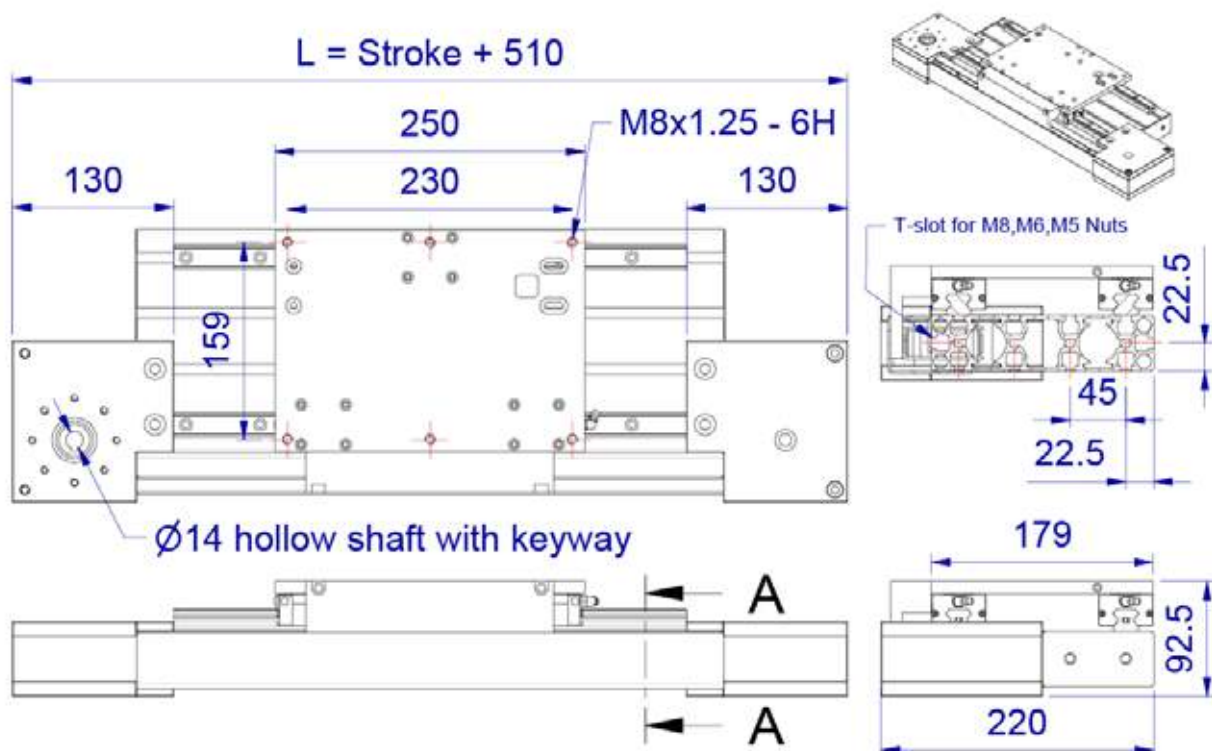
LTY SERIES

DIMENSIONS

DIMENSIONS LTY180-TR-S20T-D1



DIMENSIONS LTY180-TR-S20T-S1



All drawings can be downloaded from www.almotion.nl