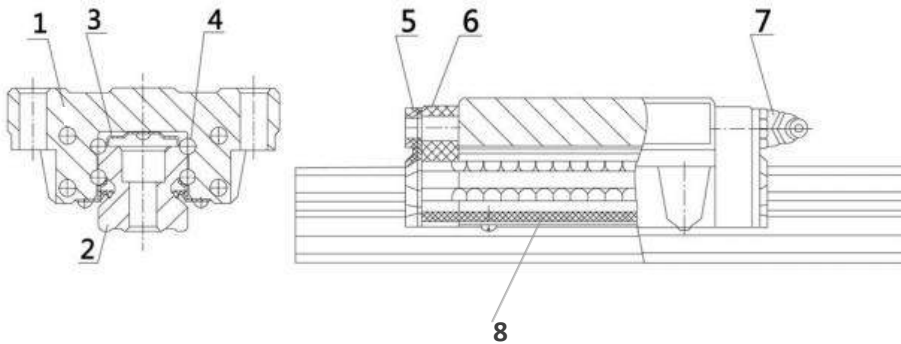
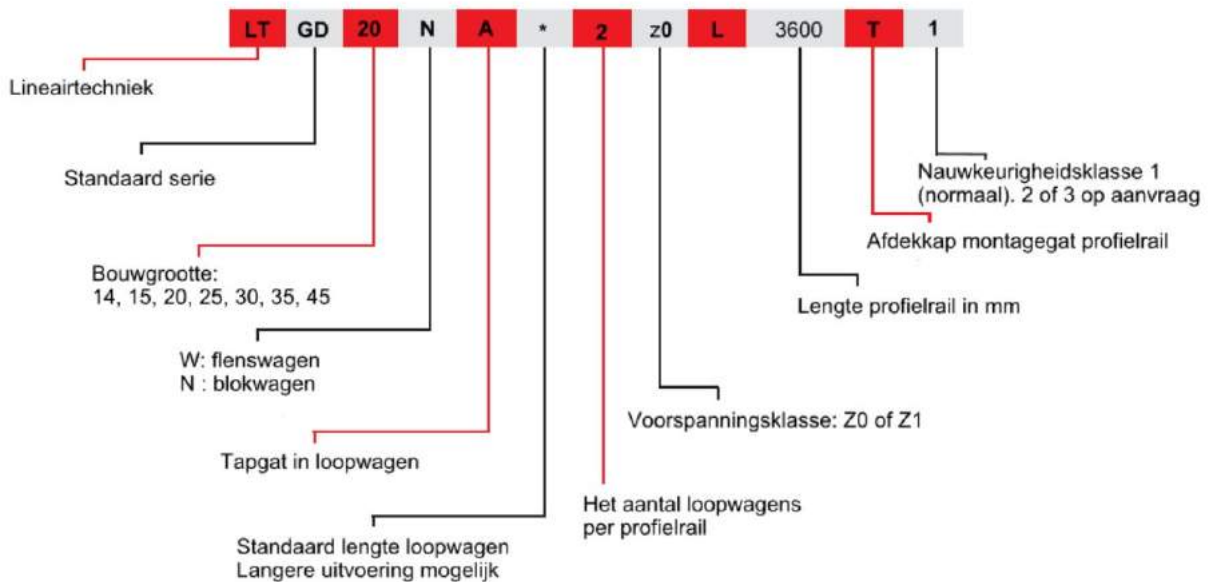


## Opbouw van de lineaire geleiding

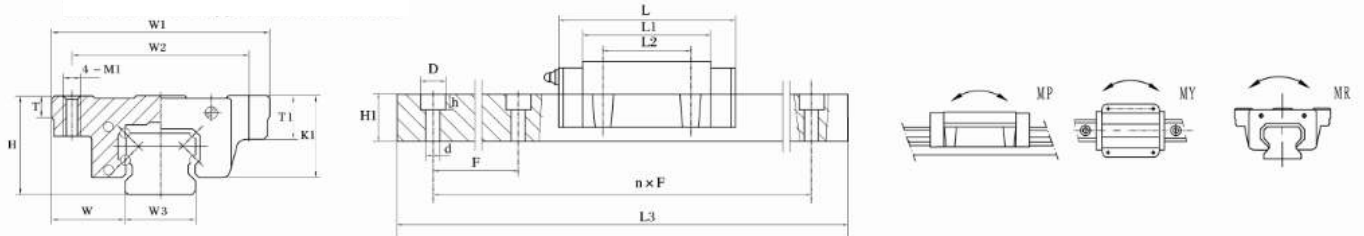


1. Loopwagen
2. Profielrail
3. Kogelbaan
4. Kogels
5. Eindafdichting
6. Eindkap
7. Smeernippel
8. Voetafdichting

## Bestelsleutel



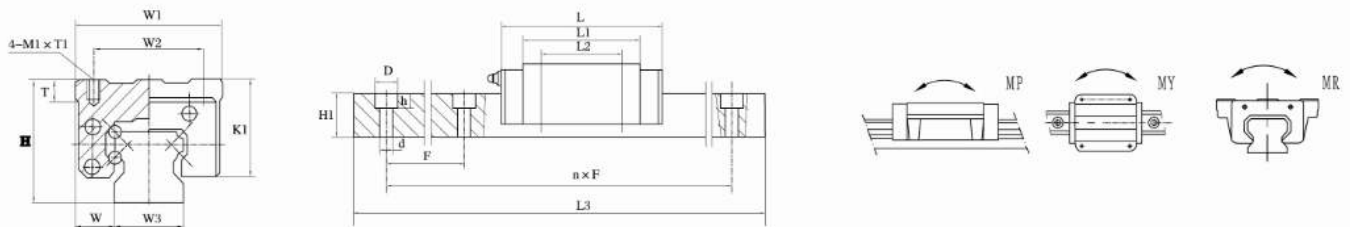
## Specificaties



## Flenswagen

Type ↓	H	W	K1	W1	L1	W2	L2	M1	T	T1	L	W3	H1	d X D X h	F	L3*	C Max (KN)	C0 (KN)	Mp (Nm)	My (Nm)	MR (NM)
GD15WA	24	16	19,3	47	38,8	38	30	M5	7	11	15	15	15	Ø4,5 X Ø7,5 X 5,3	60	3000	8,51	13,38	70	70	100
GD20WA	30	21,5	24	63	50	53	40	M6	7	10	20	20	18	Ø6 X Ø9,5 X 8,5	60	3000	13,7	19,27	160	160	230
GD25WA	36	23,5	28,8	70	59	57	45	M8	11	16	23	23	22	Ø7 X Ø11 X 9	60	3000	20,19	29,98	260	260	390
GD30WA	42	31	35	90	69	72	52	M10	10	18	28	28	26	Ø9 X Ø14 X 12	80	3000	28,08	46,33	430	430	650
GD35WA	48	33	38	100	80	82	62	M10	14	21	34	34	29	Ø9 X Ø14 X 12	80	3000	34,97	58,53	610	610	1030
GD45WA	60	37,5	49	120	97	100	80	M12	15	23	45	45	38	Ø14 X Ø20 X 16	105	3000	60,14	94,57	1290	1290	2100
De lange blokwagen is op speciale bestelling leverbaar*																					
GD20WAL*	30	21,5	24	63	66	53	40	M6	7	10	20	20	18	Ø6 X Ø9,5 X 8,5	60	3000	18,43	26,5	260	260	310
GD25WAL*	36	23,5	28,8	70	78	57	45	M8	11	16	23	23	22	Ø7 X Ø11 X 9	60	3000	27,17	40,68	450	450	500
GD30WAL*	42	31	35	90	92	72	52	M10	10	18	28	28	26	Ø9 X Ø14 X 12	80	3000	37,77	61,77	720	720	870
GD35WAL*	48	33	38	100	105	82	62	M10	14	21	34	34	29	Ø9 X Ø14 X 12	80	3000	46,43	76,54	1030	1030	1380
GD45WAL*	60	37,5	49	120	129	100	80	M12	15	23	45	45	38	Ø14 X Ø20 X 16	105	3000	80,83	126,1	2080	2080	2790

C =Dynamisch draagvermogen  
C0 =Statisch draagvermogen



## Blokwagen

Type ↓	H	W	K1	W1	L1	W2	L2	M1	T1	T	L	W3	H1	d X D X h	F	L3*	C Max (KN)	C0 (KN)	Mp (Nm)	My (Nm)	MR (NM)
GD14NA	24	9,5	21,3	34	38,8	26	26	M4	5	6	58	15	13	Ø4,5 X Ø7,5 X 5,3	60	3000	8,51	13,38	70	70	100
GD15NA	28	9,5	23,3	34	38,8	26	26	M4	5	6	58	15	15	Ø4,5 X Ø7,5 X 5,4	60	3000	8,51	13,36	70	70	100
GD20NA	30	12	24	44	50	32	36	M5	5	8	70	20	18	Ø6 X Ø9,5 X 8,5	60	3000	13,7	19,27	160	160	230
GD25NA	40	12,5	32,8	48	59	35	35	M6	8	8	83	23	22	Ø7 X Ø11 X 9	60	3000	20,19	29,98	260	260	390
GD30NA	45	16	38	60	69	40	40	M8	8	10	97	28	26	Ø9 X Ø14 X 12	80	3000	28,08	46,33	430	430	650
GD35NA	55	18	45	70	80	50	50	M8	12	10	110	34	29	Ø9 X Ø14 X 12	80	3000	34,97	58,53	610	610	1030
GD45NA	70	20,5	59	86	97	60	60	M10	16	15	138	45	38	Ø14 X Ø20 X 16	105	3000	60,14	94,57	1290	1290	2100
De lange blokwagen is op speciale bestelling leverbaar																					
GD20NAL	30	12	24	44	50	32	50	M5	5	8	86	20	18	Ø6 X Ø9,5 X 8,5	60	3000	18,43	26,5	260	260	310
GD25NAL	40	12,5	32,8	48	78	35	50	M6	8	8	102	23	22	Ø7 X Ø11 X 9	60	3000	27,17	40,68	450	450	500
GD30NAL	45	16	38	60	92	40	60	M8	8	10	120	28	26	Ø9 X Ø14 X 12	80	3000	37,77	61,77	720	720	870
GD35NAL	55	18	45	70	105	50	72	M8	12	10	135	34	29	Ø9 X Ø14 X 12	80	3000	46,43	76,54	1030	1030	1380
GD45NAL	70	20,5	59	86	129	60	80	M10	16	15	170	45	38	Ø14 X Ø20 X 16	105	3000	80,83	126,1	2080	2080	2790

C =Dynamisch draagvermogen

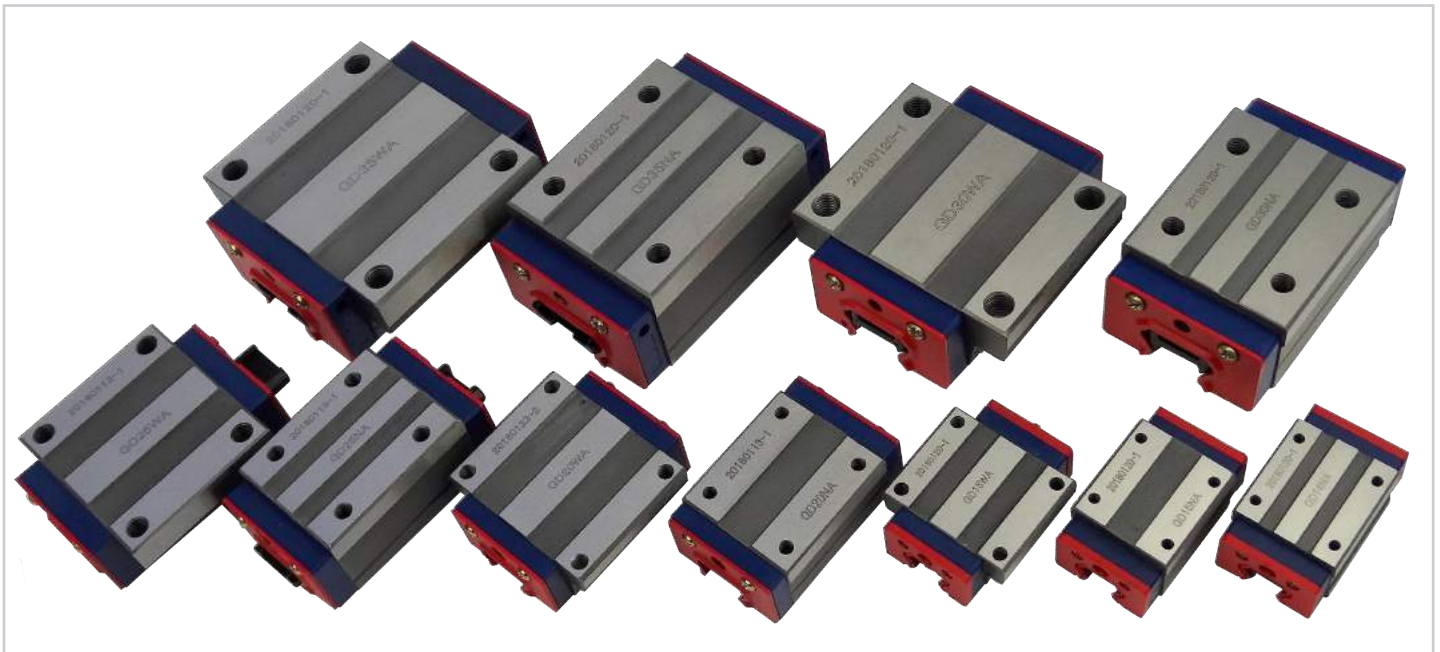
C0 =Statisch draagvermogen

\*Langere lengte op speciale bestelling leverbaar

Standaard geleiding



Diverse bouwgroottes



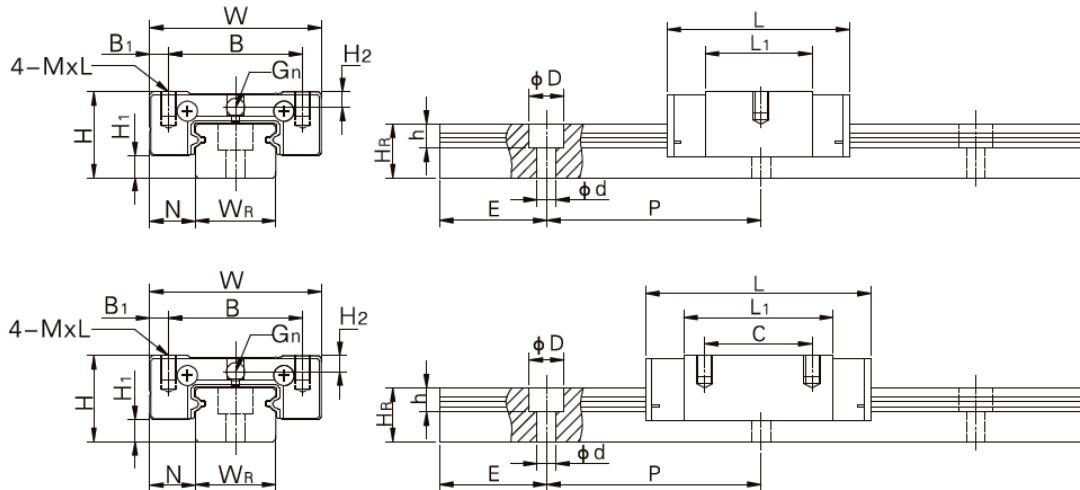
Standaard profielrails



Standaard verpakking



## Specificaties miniaturgeleiding



### Blokwagen

Type ↓	H	H1	N	W	B	B1	C	L1	L	MxL	WR	HR	D	h	d	P	E	C	C0	MR	Mp	My	
																		(KN)	(KN)	(NM)	(Nm)	(Nm)	mm
ST9C	10	2	5,5	20	15	2,5	10	19,8	30,1	M3x3	9	6,5	6	3,5	3,5	20	7,5	1,86	2,54	1,2	0,75	0,75	M3x8

