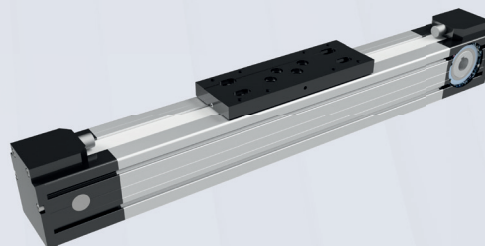


# LT80S SERIES

Compact linear units with  
internal wheel- or rail guide



- Internal guide units, width of the profile 80 mm
- Internal recirculating ball rail guide size -20- for heavy loads
- Carriage length 220 or 280 mm
- Toothed belt type 32 AT10
- Advanced internal lubrication system

## TECHNICAL DATA

## LT80S-TR-S20D

Maximum stroke length	mm	5.750
Maximum speed	mm/s	3.000
Maximum acceleration	m/s <sup>2</sup>	30
No load torque	Nm	0,8
Max. driving torque	Nm	74
Repeatability	mm	± 0,1
Movement per revolution	mm	200

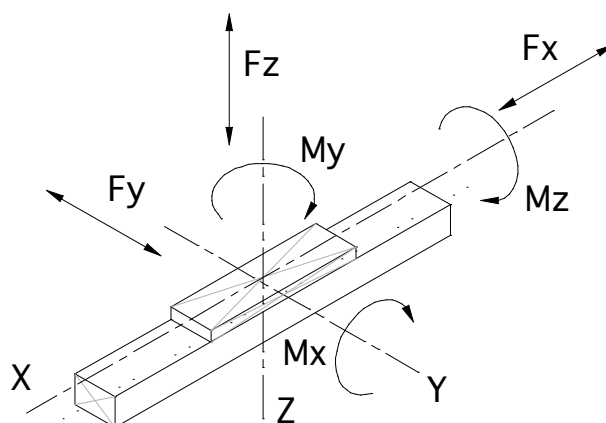
# LT80S SERIES

## TECHNICAL DATA

### LOAD CAPACITY

### LT80S-TR-S20D

Mx	Nm	720
My	Nm	960
Mz	Nm	220
Fx	N	4.400
Fy	N	7.400
Fz	N	7.400



## MOMENT OF INERTIA (NMM<sup>2</sup>)

### LT80S-TR-S20D-(L)

E <sub>Ix</sub>	5,009*10 <sup>10</sup>
E <sub>Iy</sub>	1,034*10 <sup>11</sup>

## WEIGHTS (KG)

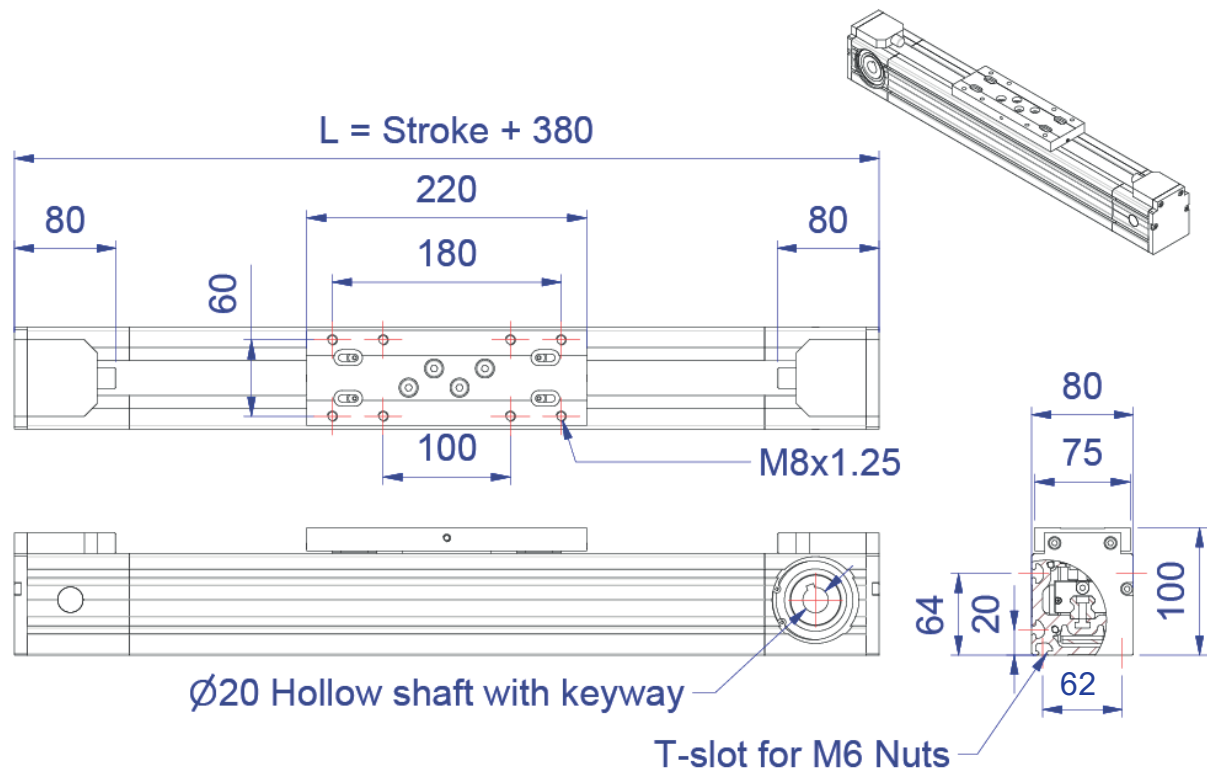
### LT80S-TR-S20D-(L)

Unit weight 0 mm stroke	6,85 (7,00)
Weight per 100 mm stroke	0,72
Mass of carriage	2,30 (2,45)

# LT80S SERIES

## DIMENSIONS

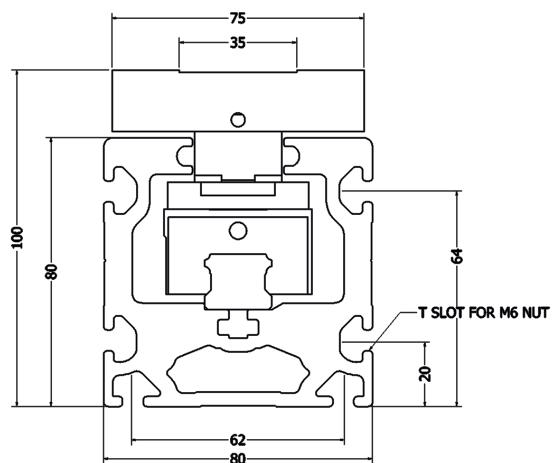
### DIMENSIONS LT80S-TR-S20D



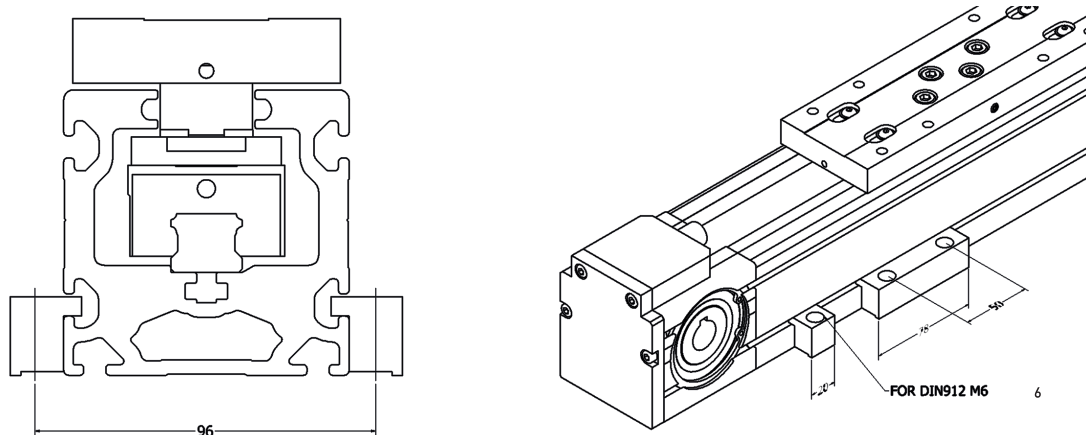
# LT80S SERIES

## DIMENSIONS

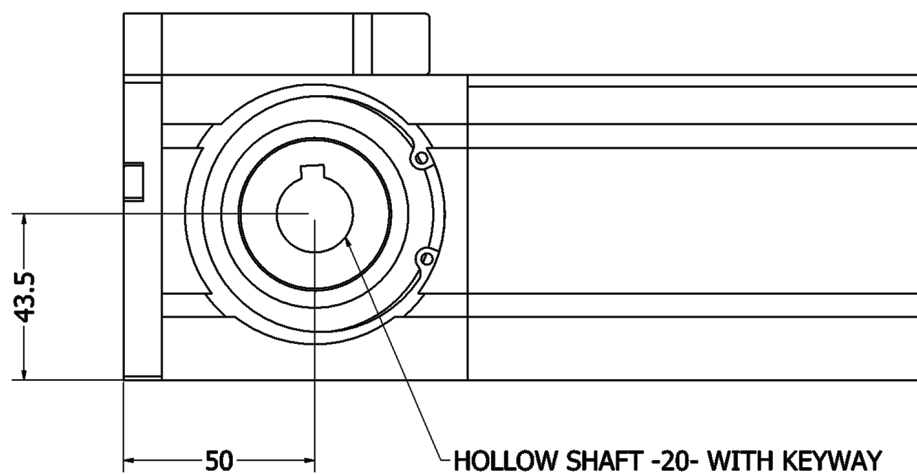
### DIMENSIONS FOR MOUNTING



### CLAMPING DIMENSIONS

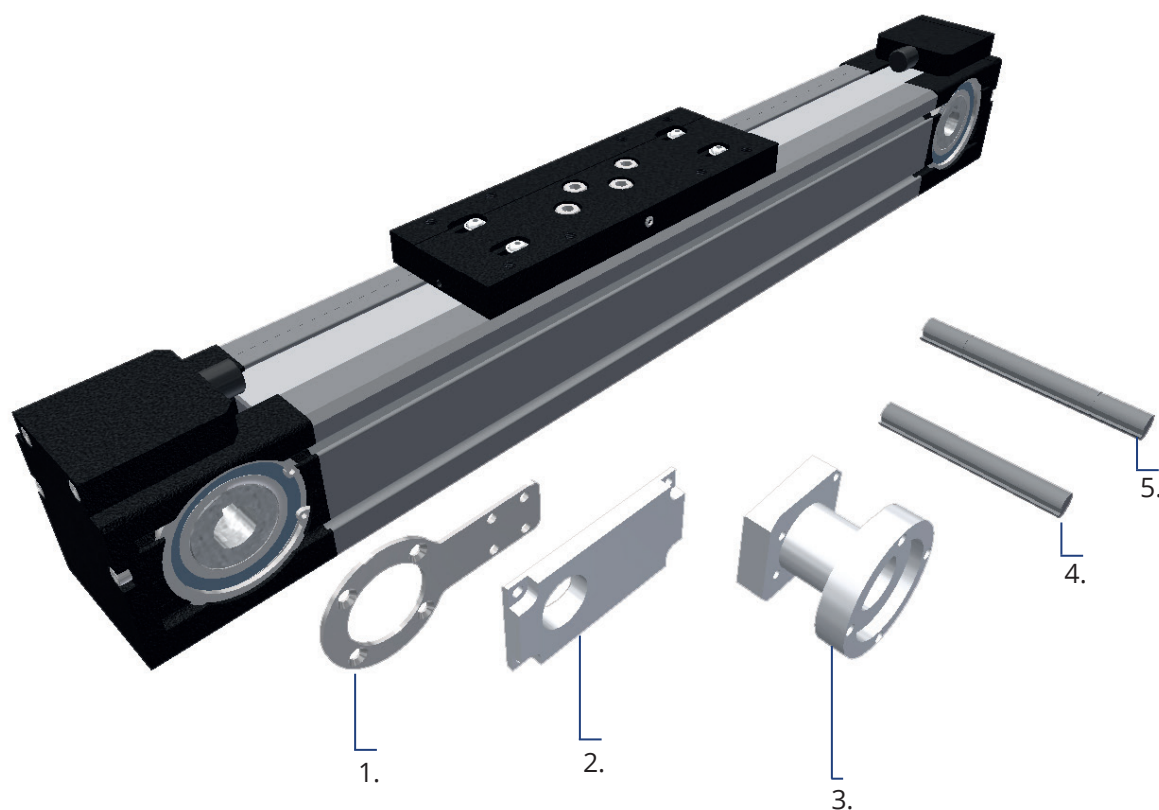


### DIMENSIONS FOR MOTOR ATTACHMENT



# LT80S-TR-S20D

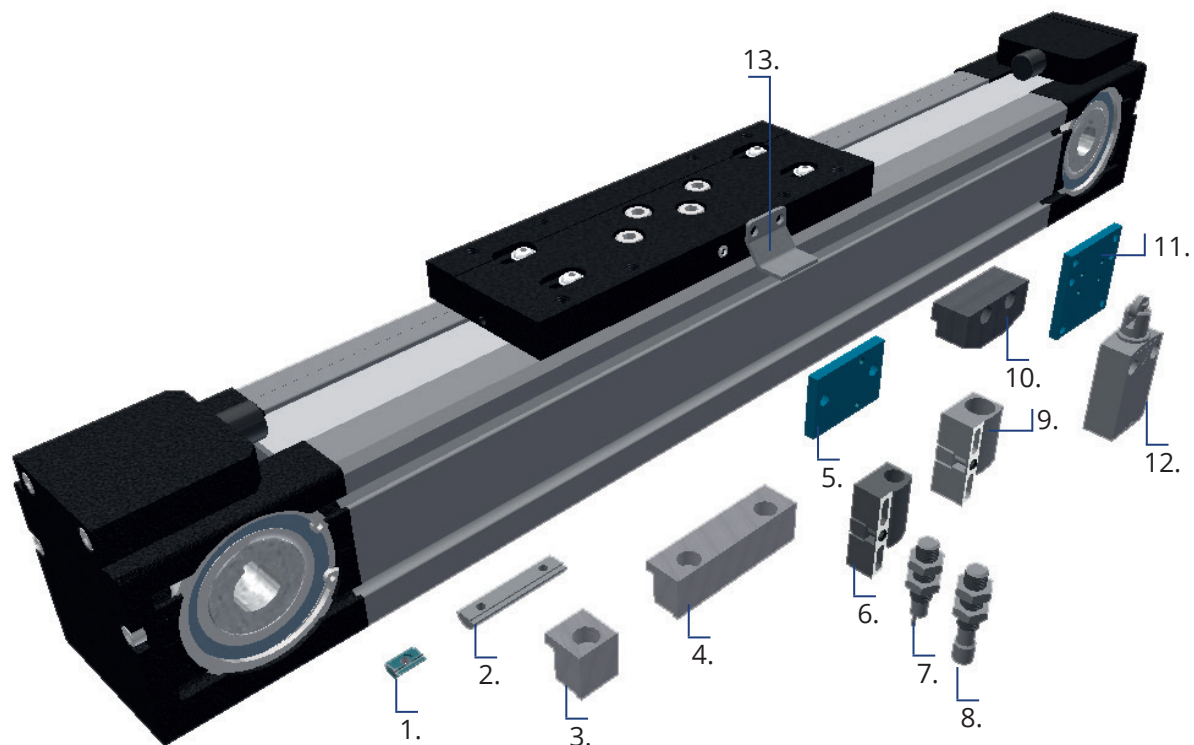
## MOTOR ACCESSORIES



1	80S70-RA-M-XXX	Motor adapter armtype
2	80S70-F-XXX	Motor Flange
3	80S70-FL-XXX	Motor adapter
4	80S70-SS-20-GS19	Single shaft $\varnothing 20$
5	80S70-DS-20-GS19	Double shaft $\varnothing 20$

# LT80S-TR-S20D

## ACCESSORIES



1	111-028-S	Single Nut M6 with spring
2	172-713S	Double Nut M6 L=40
3	80S121	Clamping plate single
4	80S122	Clamping plate double
5	8070-SH-XS-S	Bracket for Telem. Bracket
6	XSZB108	Bracket for M8 sensor
7	XS05B1PAL2	M8 inductive sensor-cable
8	XS508B1PAM8	M8 inductive sensor-M8
9	XSZB112	Bracket for M12 sensor
10	8070-DB4-IN	Sensor bracket
11	8070-SD-ME	Switch bracket
12	8070-XCMD-B	Bracket for switch
13	XCMD2102L	Switch with roll