



# Precision Locknuts



**GMT GLOBAL INC.**

No. 3, Lane 34, Minju Street, Shioushuei Township,  
Changhua 50442, Taiwan.  
TEL : +886-4-768-8320  
FAX : +886-4-768-8314  
E-mail : sales@gmtlinear.com



[www.gmtlinear.com](http://www.gmtlinear.com)

2014.08.12

AC Design 04-27071159



**GMT GLOBAL INC.**

	Applications and Directions of Use	P.2
	Quality Inspection Process	P.3
	Material	P.3
	Inspection Instrument	P.3
	GMF Series: Precision-grinding Nut – 30° Locking	P.4
	GMR Series: Precision-grinding Nut – Radial Locking	P.5
	GMKR Series: Precision-turning Nut – Clasp Locking	P.6~P.7
	GMRZ Series: Precision-turning Nut – Radial Locking	P.8~P.9
	GSFZ Series: Precision-turning Nut – 30° Locking	P.10
	GTMF Series: Precision-grinding Nut – 30° Locking	P.11
<b>Technical Information</b>	Loosen Torque of Angle Displacement	P.12
	Axial Loading	P.12
	Surface Roughness	P.12
	Surface Profile	P.12
	Nut Assembled Procedure	P.13
	Nut Released Procedure	P.13

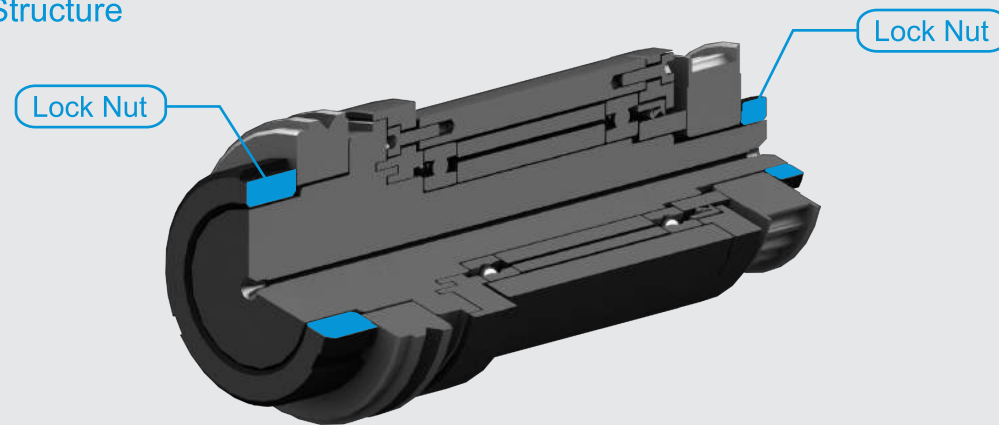
© To improve the products and services, GMT hereby reserve the right of engineering change for the product; the addition/deletion of the content in the catalogue will be executed without further notice.

## Applications and Directions of Use

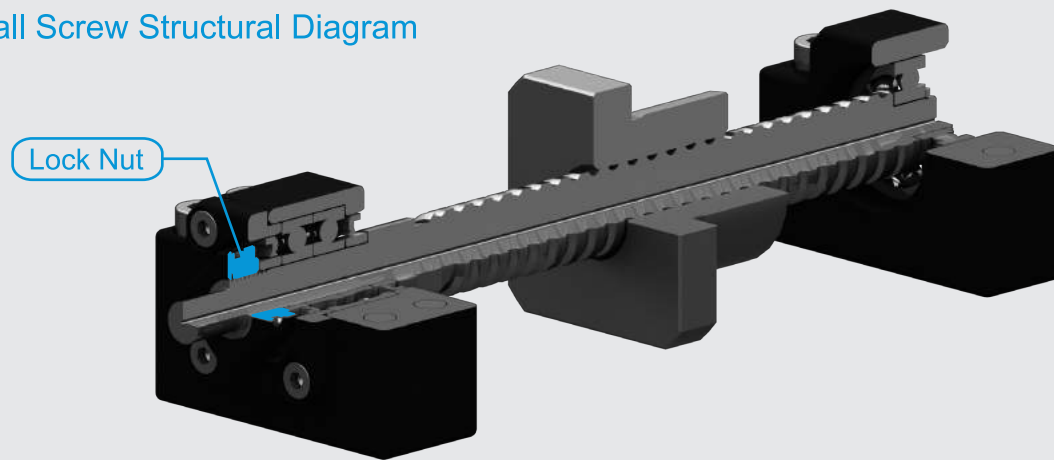
GMT Lock nut is able to effectively improve the deflection of said shaft and lead screw during rotary motion while applied to the mechanical tooling to secure them from loosening, and increase assembly precision and to simplify mounting process and extend usage life.

GMT Lock nut is able to effectively improve the deformation after locking the threads and ease the difficulty in adjustment and calibration in case applied to other facilities.

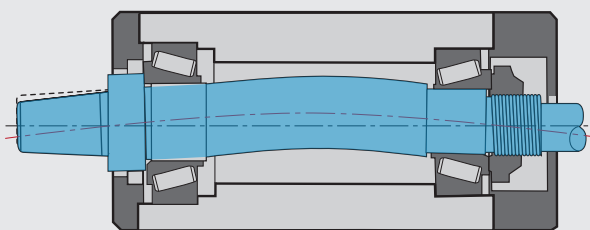
### Shaft Structure



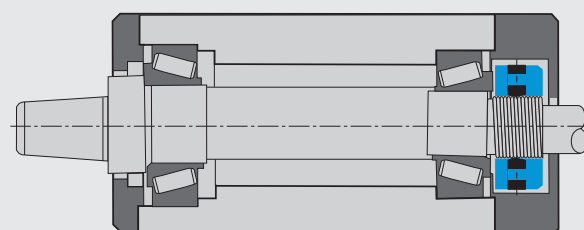
### Ball Screw Structural Diagram



### Advantages of using Precision Nut



Ordinary sun nut (crown nut): Causing deflection, deforming of Rotation Shaft and easier loosening.



GMT precision lock nut: Avoiding deflection of Rotation Shaft and prevent from loosening.

## Quality Inspection Process

The precision nut is configured with “higher locking force”, “higher precision” and “higher stability”, and listed below are its main features:

- Thread accuracy meeting ISO 4H in providing tighter securing force to prevent loosening.
- This product is designed with higher precision and stability. It helps the customer achieve higher precision and tightness in product assembly.
- It is used directly with the bearing to save the need of a washer. Easy to assemble while presenting stronger locking force to reduce the uncertainties affecting the accuracy and causing the loosening.
- It can effectively avoid the deflection and deformation of Shaft and Guide Stud during the assembly.
- As the product is manufactured according to specifications, there is no need to order other nuts, thus saving cost and shortening process time.
- Easier for assembly. Extend the service life of bearing and machine.
- Correct assembly procedure and can be repeatedly used.
- ID  $\varnothing 6\text{--}\varnothing 200\text{mm}$  is also available on request.

### Material

- Material identification: The materials are selected in accordance with JIS SCM 440 / DIN 42CrMo4 / AISI 4140.
- It meets the prohibition order specified in EU ROHS and REACH SVHC and relevant inspection certificate.

### Inspection Instrument



Universal Length Measuring Gauge



Universal Tool Microscope



Profile Equipment Measuring

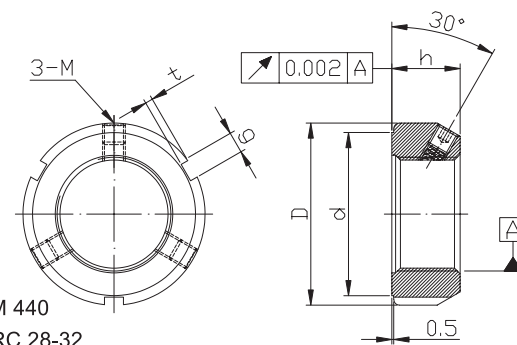






- This product is mainly used in the fabrication of precision grinding. The locking direction of its brake screw is set at 30 degrees to coordinate with the screw angle so that the brake copper can tightly bond against the screw face to achieve more stabilized and accurate function.
- No need of locking washer and keyway.
- Correct assembly procedure and can also be repeatedly used.

- Material: SCM 440
- Hardness: HRC 28-32
- Accuracy: ISO 4H

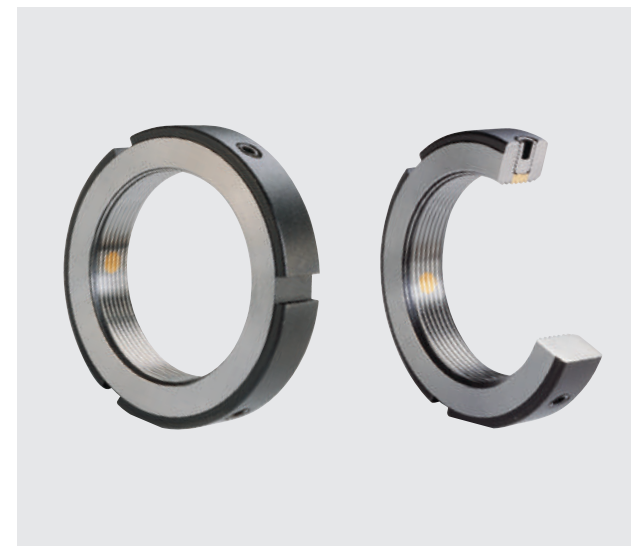


Specification Description

Model No.	Dimensions					Static Axial Load (kN)	Loosening Torque (kgf-cm)	Screw	Screw Torque
	D	h	g	t	d				
GMF 12 x 1.0P	30	14	4	2	25	40	200	M5	48
GMF 15 x 1.0P	34	16			26	60	250	M6	80
GMF 17 x 1.0P	36	18	5	2	28	70	300		
GMF 20 x 1.0P	38				32	90	400		
GMF 20 x 1.5P	38				32	90	400		
GMF 25 x 1.5P	42				36	120	800		
GMF 30 x 1.5P	48				43	145	1400		
GMF 35 x 1.5P	53				48	170	1800		
GMF 40 x 1.5P	58				52	190	2200		
GMF 45 x 1.5P	65				59	220	2500		
GMF 50 x 1.5P	70	64	250	2700					
GMF 55 x 2.0P	75	20	6	2.5	68	310	2900	M8	190
GMF 60 x 2.0P	80				73	350	3100		
GMF 65 x 2.0P	85				78	400	3200		
GMF 70 x 2.0P	92				84	450	3400		
GMF 75 x 2.0P	98				90	480	3600		
GMF 80 x 2.0P	105				96	580	3800		
GMF 85 x 2.0P	112				104	620	4000		
GMF 90 x 2.0P	118				108	680	4500		
GMF 100 x 2.0P	128				118	740	5000		
GMF 110 x 2.0P	145				132	800	5500		
GMF 120 x 2.0P	155	24	8	3.5	142	860	6000	M8	190
GMF 130 x 2.0P	165				152	920	6500		
GMF 140 x 2.0P	180				165	980	7000		
GMF 150 x 2.0P	195				180	1050	7500		
GMF 160 x 3.0P	210				190	1200	8000		
GMF 170 x 3.0P	220				200	1260	8500		
GMF 180 x 3.0P	230				205	1370	9000		
GMF 190 x 3.0P	240				220	1430	9500		
GMF 200 x 3.0P	250				230	1500	9900		
GMF 150 x 2.0P	195				32	12	5		
GMF 160 x 3.0P	210	190	1200	8000					
GMF 170 x 3.0P	220	200	1260	8500					
GMF 180 x 3.0P	230	205	1370	9000					
GMF 190 x 3.0P	240	220	1430	9500					
GMF 200 x 3.0P	250	230	1500	9900					

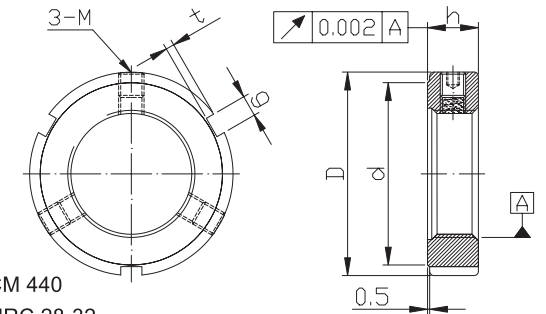
Instructions of Ordering:

- Before ordering the aforesaid product, please indicate the desired model number. For example: GMF25 x 1.5P-L.
- To order special left-hand thread precision nut, please indicate "-L". For example: GMF25x1.5P-L.
  - To order special precision nut with UK-system threads, please indicate "-U20" (i.e., 20 threads per inch). For example: GMF25-U20.
  - The in-stock inventories are not available for the aforesaid special parts. To purchase, please place the order in advance for the convenience of your using.



- This product is mainly used in the fabrication of precision grinding. As the brake screw is designed in radial locking, it is suitable for the restrictive space in design or assembly for replacing the GMF-series nuts.
- No need of locking washer and keyway.
- Correct assembly procedure and can also be repeatedly used.

- Material: SCM 440
- Hardness: HRC 28-32
- Accuracy: ISO 4H

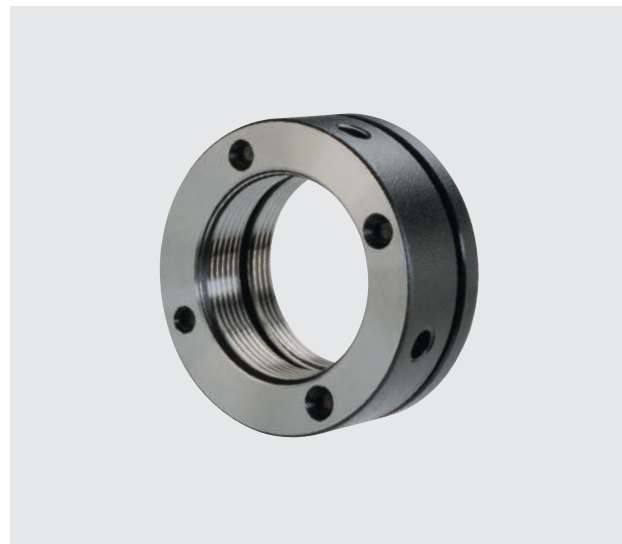


Specification Description

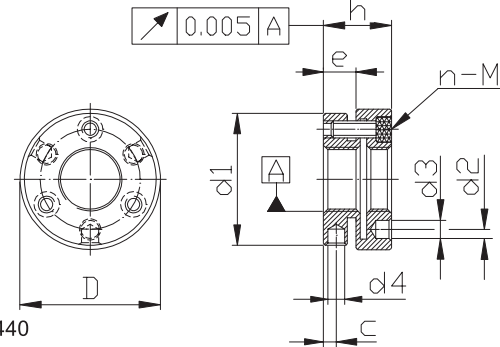
Model No.	Dimensions					Static Axial Load (kN)	Loosening Torque (kgf-cm)	Screw	Screw Torque
	D	h	g	t	d				
GMR 6 x 0.5P	16	8	3	2	11	7.8	110	M4	22
GMR 8 x 0.75P					13	10.2	150		
GMR 10 x 0.75P	18	10	4	2	19	11	180	M5	48
GMR 12 x 1.0P	24				20	190			
GMR 15 x 1.0P	28				23	220			
GMR 17 x 1.0P	32				27	280			
GMR 20 x 1.0P	35				30	300			
GMR 20 x 1.5P	35				50	300			
GMR 25 x 1.5P	42				36	550			
GMR 30 x 1.5P	48				43	750			
GMR 35 x 1.5P	53				48	900			
GMR 40 x 1.5P	58				52	1200			
GMR 45 x 1.5P	65	59	1300	M6	80				
GMR 50 x 1.5P	70	64	1500						
GMR 55 x 2.0P	75	68	1700						
GMR 60 x 2.0P	80	73	2000						
GMR 65 x 2.0P	85	78	2200						
GMR 70 x 2.0P	92	84	2400						
GMR 75 x 2.0P	98	90	2600						
GMR 80 x 2.0P	105	96	2800						
GMR 85 x 2.0P	112	104	3000						
GMR 90 x 2.0P	118	108	3200						
GMR 100 x 2.0P	128	16	7	3	118	570	3600	M8	190
GMR 110 x 2.0P	145				640	4000			
GMR 120 x 2.0P	155				680	4500			
GMR 130 x 2.0P	165				730	5000			
GMR 140 x 2.0P	180				800	5500			
GMR 150 x 2.0P	195				850	6000			
GMR 160 x 3.0P	210				980	6500			
GMR 170 x 3.0P	220				1030	7000			
GMR 180 x 3.0P	230				1140	7500			
GMR 190 x 3.0P	240				1200	8000			
GMR 200 x 3.0P	250	1250	8500						

Instructions of Ordering:

- Before ordering the aforesaid product, please indicate the desired model number. For example: GMF25 x 1.5P-L.
- To order special left-hand thread precision nut, please indicate "-L". For example: GMF25x1.5P-L.
  - To order special precision nut with UK-system threads, please indicate "-U20" (i.e., 20 threads per inch). For example: GMF25-U20.
  - The in-stock inventories are not available for the aforesaid special parts. To purchase, please place the order in advance for the convenience of using.



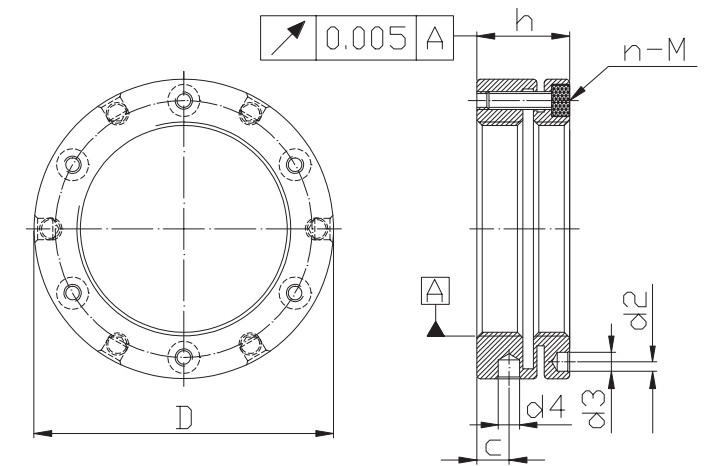
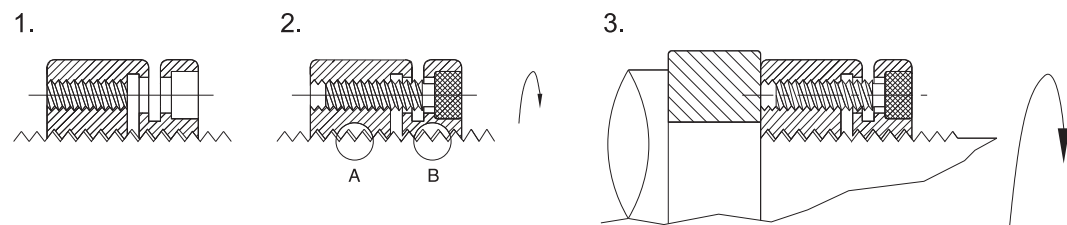
- This product is mainly used in the fabrication of precision plane grinding. It is designed by focusing on the braking function, allowing the screw surface contour to tightly bond against the male threads through the deformation of the nut itself to create stronger brake performance.
- No need of locking washer and keyway.
- Correct assembly procedure and can also be repeatedly used.



- Material: SCM 440
- Hardness: HRC 28-32
- Accuracy: ISO 4H

Specification Description

Model No.	Dimensions									Spiral Angle	Screw Torque		
	D	h	e	d1	d2	d3	d4	c	DIN		n	Max. kgf-cm	
GMKR 10 x 0.75P	24	14	6.6	22	17	3.2	2.5	2.5	M3 x10	3	20		
GMKR 10 x 1.0P		15											
GMKR 12 x 1.0P		14											
GMKR 12 x 1.5P	26	15	7.6	25	19	4.3	3	3	M4 x10	3	20		
GMKR 14 x 1.5P	32	22.5											
GMKR 15 x 1.0P	33	23.5											
GMKR 16 x 1.5P	34	24.5	-	-	-	4	5	M4 x12	4	30			
GMKR 17 x 1.0P	35	25.5											
GMKR 18 x 1.5P	36	26.5											
GMKR 20 x 1.0P	40	18	-	-	30.5	4.3	5	M4 x12	4	30			
GMKR 20 x 1.5P											40	30.5	
GMKR 22 x 1.5P											42	32.5	
GMKR 24 x 1.5P	45	20	-	-	36.5	4.3	6.5	M4 x14	4	30			
GMKR 25 x 1.5P											45	36.5	
GMKR 26 x 1.5P											46	38.5	
GMKR 28 x 1.5P	48	22	-	-	40.5	4.3	5	M4 x16	4	30			
GMKR 30 x 1.5P											48	40.5	
GMKR 32 x 1.5P											50	42.5	
GMKR 35 x 1.5P	53	-	-	-	45.5	4.3	5	M4 x16	4	30			
GMKR 38 x 1.5P											53	45.5	
GMKR 40 x 1.5P											58	48.5	
GMKR 42 x 1.5P	60	25	-	-	50.5	4.3	6	M4 x18	6	255			
GMKR 45 x 1.5P											60	50.5	
GMKR 48 x 1.5P											68	52.5	
GMKR 50 x 1.5P	70	-	-	-	58	4.3	6.5	M4 x18	6	255			
GMKR 52 x 1.5P											70	58	
GMKR 55 x 1.5P											72	59.5	
GMKR 55 x 2.0P	75	61.5	-	-	63.5	4.3	9	M4 x18	6	255			
GMKR 55 x 1.5P	75	61.5											
GMKR 55 x 2.0P	75	66.5											



• GMKR16-GMKR200

Specification Description

Model No.	Dimensions									Spiral Angle	Screw Torque		
	D	h	e	d1	d2	d3	d4	c	DIN		n	Max. kgf-cm	
GMKR 58 x 1.5P	82	26	-	-	72.5	5.3	6	9	M5 x18	3	61		
GMKR 60 x 1.5P	84				74.5								
GMKR 60 x 2.0P	84				74.5								
GMKR 62 x 1.5P	86	28	-	-	76.5	6.4	8	10.5	M5 x20	6	102		
GMKR 65 x 1.5P	88				78.5								
GMKR 65 x 2.0P	88				78.5								
GMKR 68 x 1.5P	95	32	-	-	83	6.4	8	9.5	M6 x20	6	102		
GMKR 70 x 1.5P	95				85								
GMKR 70 x 2.0P	95				85								
GMKR 72 x 1.5P	98	36	-	-	86	6.4	8	8.5	M6 x20	6	102		
GMKR 75 x 1.5P	100				88								
GMKR 75 x 2.0P	100				88								
GMKR 80 x 2.0P	110	40	-	-	95	8.4	10	11	M6 x25	8	255		
GMKR 85 x 2.0P	115				100								
GMKR 90 x 2.0P	120				108								
GMKR 95 x 2.0P	125	40	-	-	113	8.4	10	13	M6 x25	8	255		
GMKR 100 x 2.0P	130				118								
GMKR 105 x 2.0P	135				123								
GMKR 110 x 2.0P	140	40	-	-	128	8.4	10	12	M8 x30	8	255		
GMKR 115 x 2.0P	145				133								
GMKR 120 x 2.0P	155				140								
GMKR 125 x 2.0P	160	40	-	-	148	8.4	10	14	M8 x30	8	255		
GMKR 130 x 3.0P	165				153								
GMKR 140 x 3.0P	180				165								
GMKR 150 x 3.0P	190	40	-	-	175	8.4	10	12	M8 x30	8	255		
GMKR 160 x 3.0P	205				185								
GMKR 170 x 3.0P	215				195								
GMKR 180 x 3.0P	230	40	-	-	210	8.4	10	14	M8 x30	8	255		
GMKR 190 x 3.0P	240				224								
GMKR 200 x 3.0P	245				229								

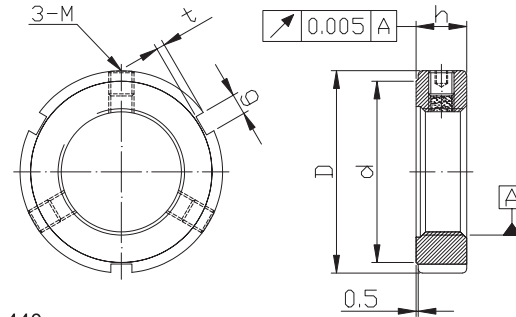
Instructions of Ordering:

- Before ordering the aforesaid product, please indicate the desired model number. For example: GMKR25 x 1.5P.
- To order special left-hand thread precision nut, please indicate "-L". For example: GMKR25x1.5P-L.
  - To order special precision nut with UK-system threads, please indicate "-U20" (i.e., 20 threads per inch). For example: GMKR25-U20.
  - The in-stock inventories are not available for the aforesaid special parts. To purchase, please place the order in advance for the convenience of using.





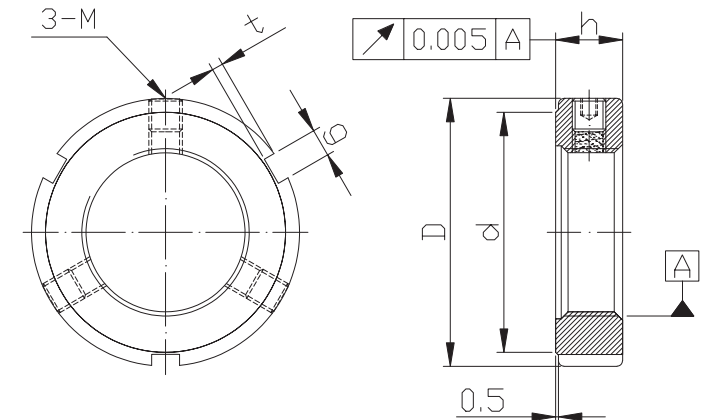
- The brake screw of this product is designed in radial locking. It is suitable for the restrictive space in design or assembly for replacing the precision nuts of 30-degree locking series.
- No need of locking washer and keyway.
- Correct assembly procedure and can also be repeatedly used.



- Material: SCM 440
- Hardness: HRC 28-32
- Accuracy: ISO 4H

Specification Description

Model No.	Dimensions					Static Axial Load (kN)	Loosening Torque (kgf-cm)	Screw		Screw Torque Max. kgf-cm
	D	h	g	t	d			DIN		
GMRZ 6 x 0.5P	16	8	3	2	11	7.8	110	M4	22	
GMRZ 8 x 0.75P					11	10.2	150			
GMRZ 8 x 1.0P					13	11	180			
GMRZ 10 x 0.75P					18	20	190			
GMRZ 10 x 1.0P	20	8	3	2	18	20	190	M4	22	
GMRZ 12 x 1.0P					20	25	200			
GMRZ 12 x 1.5P					24	30	220			
GMRZ 14 x 1.0P					25	35	250			
GMRZ 14 x 1.5P	28	10	4	2	23	40	280	M5	48	
GMRZ 16 x 1.0P					27	45	290			
GMRZ 16 x 1.5P					32	50	300			
GMRZ 17 x 1.0P					30	65	400			
GMRZ 18 x 1.0P	32	10	4	2	32	70	450	M6	80	
GMRZ 18 x 1.5P					33	75	550			
GMRZ 20 x 1.0P					37	80	600			
GMRZ 20 x 1.5P					40	85	650			
GMRZ 22 x 1.0P	43	12	5	2	38	85	650	M6	80	
GMRZ 22 x 1.5P					40	90	750			
GMRZ 24 x 1.0P					45	100	800			
GMRZ 24 x 1.5P					52	110	900			
GMRZ 25 x 1.5P	53	14	6	2.5	47	115	950	M8	190	
GMRZ 26 x 1.5P					52	120	1000			
GMRZ 27 x 1.5P					58	125	1100			
GMRZ 28 x 1.0P					52	130	1200			
GMRZ 28 x 1.5P	62	16	7	3	56	140	1250	M8	190	
GMRZ 30 x 1.5P					59	150	1300			
GMRZ 33 x 1.5P					62	160	1400			
GMRZ 35 x 1.5P					64	175	1500			
GMRZ 36 x 1.5P	72	16	7	3	65	200	1600	M8	190	
GMRZ 38 x 1.5P					68	225	1700			
GMRZ 39 x 1.5P					73	235	1800			
GMRZ 40 x 1.5P					78	250	2000			
GMRZ 42 x 1.5P	80	16	7	3	73	250	2000	M8	190	
GMRZ 45 x 1.5P					77	270	2100			
GMRZ 48 x 1.5P					78	290	2200			
GMRZ 50 x 1.5P					85					



Specification Description

Model No.	Dimensions					Static Axial Load (kN)	Loosening Torque (kgf-cm)	Screw		Screw Torque Max. kgf-cm
	D	h	g	t	d			DIN		
GMRZ 68 x 2.0P	92	18	8	3.5	84	320	2300	M8	190	
GMRZ 70 x 2.0P					86	340	2400			
GMRZ 72 x 2.0P					90	350	2500			
GMRZ 75 x 2.0P					98	360	2600			
GMRZ 76 x 2.0P	105	20	10	4	96	370	2700	M8	190	
GMRZ 80 x 2.0P					104	430	2800			
GMRZ 85 x 2.0P					108	460	3000			
GMRZ 90 x 2.0P					113	520	3200			
GMRZ 95 x 2.0P	123	24	12	5	118	550	3400	M10	360	
GMRZ 100 x 2.0P					118	570	3600			
GMRZ 105 x 2.0P					125	600	3800			
GMRZ 110 x 2.0P					132	640	4000			
GMRZ 115 x 2.0P	145	26	12	5	137	620	3900	M10	360	
GMRZ 118 x 2.0P					142	640	4200			
GMRZ 120 x 2.0P					155	680	4500			
GMRZ 125 x 2.0P					147	700	4700			
GMRZ 130 x 2.0P	160	28	12	5	152	730	5000	M10	360	
GMRZ 135 x 2.0P					160	760	5200			
GMRZ 138 x 2.0P					163	780	5400			
GMRZ 140 x 2.0P					165	800	5500			
GMRZ 145 x 2.0P	190	30	12	5	175	820	5800	M10	360	
GMRZ 150 x 2.0P					180	850	6000			
GMRZ 155 x 3.0P					190	900	6200			
GMRZ 160 x 3.0P					195	980	6500			
GMRZ 165 x 3.0P	210	30	12	5	200	1000	6700	M10	360	
GMRZ 170 x 3.0P					200	1030	7000			
GMRZ 180 x 3.0P					210	1140	7500			
GMRZ 190 x 3.0P					220	1200	8000			
GMRZ 200 x 3.0P	250				230	1250	8500			

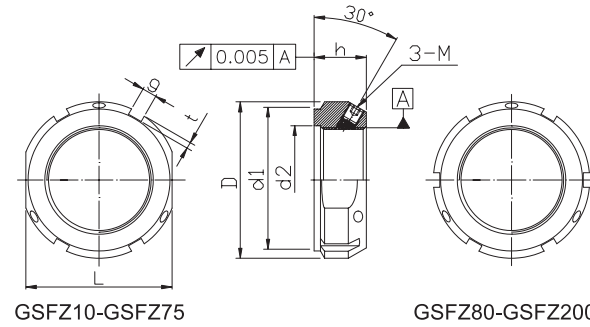
Instructions of Ordering:

Before ordering the aforesaid product, please indicate the desired model number. For example: GMKR25 x 1.5P.

- To order special left-hand thread precision nut, please indicate "-L". For example: GMKR25x1.5P-L.
- To order special precision nut with UK-system threads, please indicate "-U20" (i.e., 20 threads per inch). For example: GMKR25-U20.
- The in-stock inventories are not available for the aforesaid special parts. To purchase, please place the order in advance for the convenience of using.



- The locking direction of its brake screw is set at 30 degrees to coordinate with the screw angle so that the brake copper can tightly bond against the screw face to achieve more stabilized and accurate function.
- No need of locking washer and keyway.
- Correct assembly procedure and can also be repeatedly used.



- Material: SCM 440
- Accuracy: ISO 4H

Specification Description

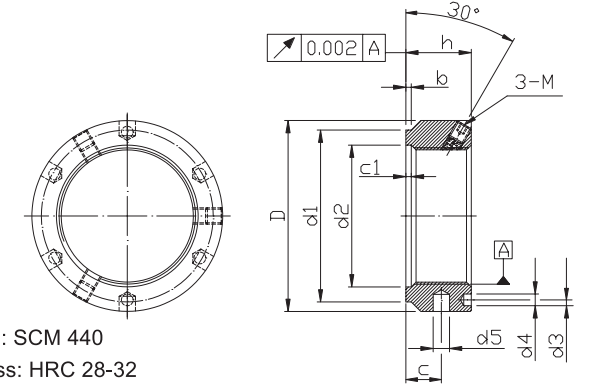
Model No.	Dimensions							Static Axial Load (kN)	Loosening Torque (kgf·cm)	Screw Torque	
	D	h	g	t	d1	d2	L			DIN	Max. kgf·cm
GSFZ 10X0.75P	28	14	4	2	23	11	24	35	150	M5	48
GSFZ 12X1.0P	30				13	27	40	180			
GSFZ 15X1.0P	33				16	30	60	200			
GSFZ 17X1.0P	37	18	5	2	33	18	34	80	250	M6	60
GSFZ 20X1.0P	40				21	36	90	350			
GSFZ 25X1.5P	44				26	41	130	450			
GSFZ 30X1.5P	49	20	5	2	44	32	46	160	550	M6	60
GSFZ 35X1.5P	54				38	50	190	650			
GSFZ 40X1.5P	65				42	60	210	800			
GSFZ 45X1.5P	70	22	6	2.5	64	48	65	240	950	M8	190
GSFZ 50X1.5P	75				52	70	300	1150			
GSFZ 55X2.0P	85				58	80	340	2250			
GSFZ 60X2.0P	90	26	8	3.5	82	62	85	380	2450	M8	190
GSFZ 65X2.0P	95				68	90	460	2650			
GSFZ 70X2.0P	100				72	95	490	2850			
GSFZ 75X2.0P	105	28	8	3.5	97	77	100	520	3050	M8	190
GSFZ 80X2.0P	110				83	-	620	3250			
GSFZ 85X2.0P	120				88	-	650	6600			
GSFZ 90X2.0P	125	10	4	4	115	93	-	680	7200	M10	360
GSFZ 95X2.0P	130				98	-	710	7800			
GSFZ 100X2.0P	135				103	-	740	8400			
GSFZ 110X2.0P	145	12	5	4	134	112	-	800	9600	M10	360
GSFZ 120X2.0P	155				122	-	860	10800			
GSFZ 130X2.0P	165				132	-	920	12000			
GSFZ 140X2.0P	175	14	6	6	164	142	-	980	13200	M10	360
GSFZ 150X2.0P	185				152	-	1040	14400			
GSFZ 160X3.0P	195				162	-	1100	16000			
GSFZ 170X3.0P	205	16	7	7	194	172	-	1160	17500	M10	360
GSFZ 180X3.0P	215				182	-	1220	19000			
GSFZ 190X3.0P	225				192	-	1280	20500			
GSFZ 200X3.0P	235	18	8	8	224	202	-	1340	23000	M10	360

Instructions of Ordering:

- Before ordering the aforesaid product, please indicate the desired model number. For example: GSFZ25 x 1.5P.
- To order special left-hand thread precision nut, please indicate "-L". For example: GSFZ25x1.5P-L.
  - To order special precision nut with UK-system threads, please indicate "-U20" (i.e., 20 threads per inch). For example: GSFZ25-U20.
  - The in-stock inventories are not available for the aforesaid special parts. To purchase, please place the order in advance for the convenience of using.



- The locking direction of its brake screw is set at 30 degrees to coordinate with the screw angle so that the brake copper can tightly bond against the screw face to achieve more stabilized and accurate function.
- No need of locking washer and keyway.
- Correct assembly procedure and can also be repeatedly used.



- Material: SCM 440
- Hardness: HRC 28-32
- Accuracy: ISO 4H

Specification Description

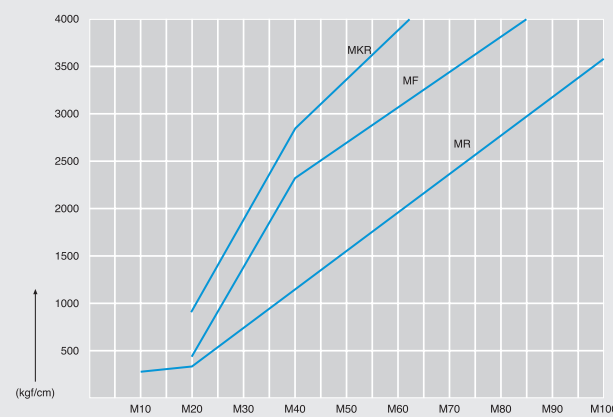
Model No.	Dimensions											Static Axial Load (kN)	Loosening Torque (kgf·cm)	Screw Torque	
	D	h	d1	d2	d3	d4	d5	b	c	c1	DIN			Max. kgf·cm	
GTMF 25X1.5P	42	20	35	26	32.5	4.3	4	5	2	11	2	130	450	M6	80
GTMF 30X1.5P	48		40	32	40.5							160	550		
GTMF 35X1.5P	53		47	38	45.5							190	650		
GTMF 40X1.5P	58	22	52	42	50.5	5.3	6	3	12	13	3	210	800	M6	80
GTMF 45X1.5P	68		58	48	58							240	950		
GTMF 50X1.5P	70		63	52	61.5							300	1150		
GTMF 55X1.5P	75	24	70	58	66.5	6.4	8	8	13	14	3	340	1350	M8	190
GTMF 60X1.5P	84		75	62	74.5							380	1500		
GTMF 65X1.5P	88		80	68	78.5							460	1700		
GTMF 70X1.5P	95	26	86	72	85	8	10	5	16	17	5	490	2850	M8	190
GTMF 75X1.5P	100		91	77	88							520	3050		
GTMF 80X2.0P	110		97	83	95							620	3250		
GTMF 85X2.0P	115	30	102	88	100	8.4	10	5	17	17	5	650	6600	M10	360
GTMF 90X2.0P	120		110	93	108							680	7200		
GTMF 95X2.0P	125		114	98	113							710	7800		
GTMF 100X2.0P	130	32	120	103	118	8.4	10	5	17	17	5	740	8400	M10	360
GTMF 110X2.0P	140		132	112	128							800	9600		
GTMF 120X2.0P	155		142	122	140							860	10800		
GTMF 130X3.0P	165	32	156	132	153	8.4	10	5	17	17	5	920	12000	M10	360
GTMF 140X3.0P	180		166	142	165							980	13200		
GTMF 150X3.0P	190		180	152	175							1040	14400		
GTMF 160X3.0P	205	32	190	162	185	8.4	10	5	17	17	5	1100	16000	M10	360
GTMF 170X3.0P	215		205	172	195							1160	17500		
GTMF 180X3.0P	230		215	182	210							1220	19000		
GTMF 190X3.0P	240	32	225	192	224	8.4	10	5	17	17	5	1280	20500	M10	360
GTMF 200X3.0P	245		237	202	229							1340	22000		

Instructions of Ordering:

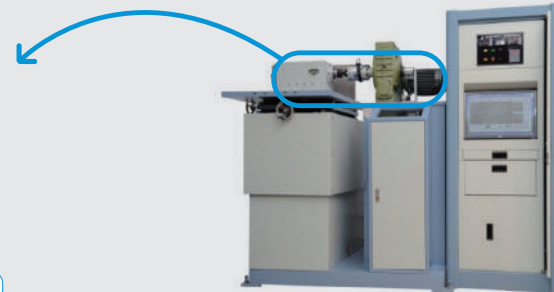
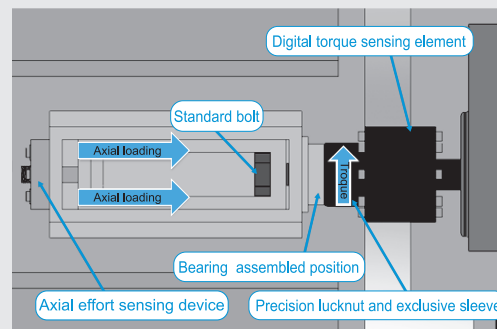
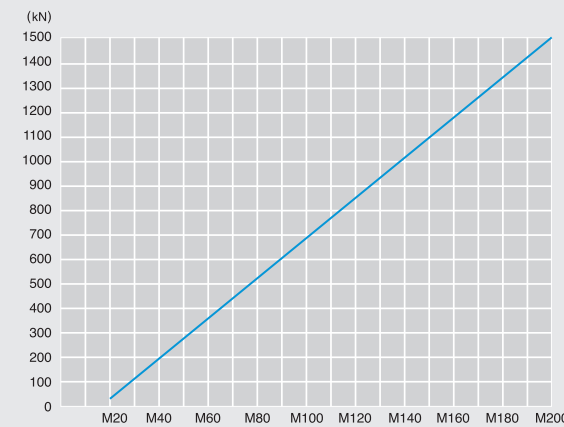
- Before ordering the aforesaid product, please indicate the desired model number. For example: GTMF25 x 1.5P.
- To order special left-hand thread precision nut, please indicate "-L". For example: GTMF25x1.5P-L.
  - To order special precision nut with UK-system threads, please indicate "-U20" (i.e., 20 threads per inch). For example: GTMF25-U20.
  - The in-stock inventories are not available for the aforesaid special parts. To purchase, please place the order in advance for the convenience of using.

## Loosen Torque of Angle Displacement

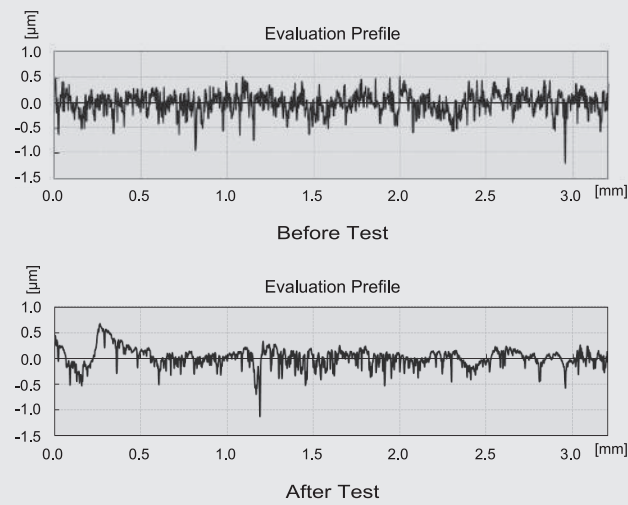
Remarks:  
(a)The data are for reference only  
(b)1Nm=10.2kgf-cm=0.73lb-ft



## Axial Loading

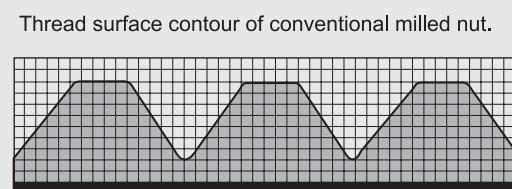
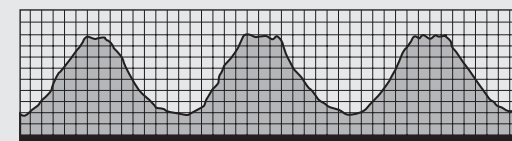


## Surface Roughness



## Surface Profile

Specify that the turned thread will present coarser surface, which will lead to the reduced pre-stress after collapsing as to cause the loosening of nut in a more serious situation.



The thread surface contour after grinding the MF, MR series precision nuts.

## Nut Assembled Procedure

### Example: GMF, GMR Series

1. Blow and clean the Shaft, Guide Stud and Nut.
2. Apply lubricant oil in the thread area of Shaft, Guide Stud and Nut.
3. Fasten with appropriate tool and torque wrench to the specified torque.
4. Fasten the lock screw.

### Example: GMKR Series

1. Blow and clean the Shaft, Guide Stud and Nut and then loosen the screw attached to the nut.
2. Apply lubricant oil in the thread area of Shaft, Guide Stud and Nut.
3. Fasten with appropriate tool and torque wrench to the specified torque.
4. Fasten the lock screw.

## Nut Released Procedure

### Example: GMF, GMR Series

1. Loosen the lock screw and then clean the thread belly of Shaft and Guide Stud.
2. Tap the upper part of 3 locking screws on the nut.
3. Loosen the nut with appropriate tool and wrench.
4. Remove the nut.

### Example: GMKR Series

1. Loosen the hexagonal socket screw.
2. Loosen the nut with appropriate tool and wrench.
3. Remove the nut.