

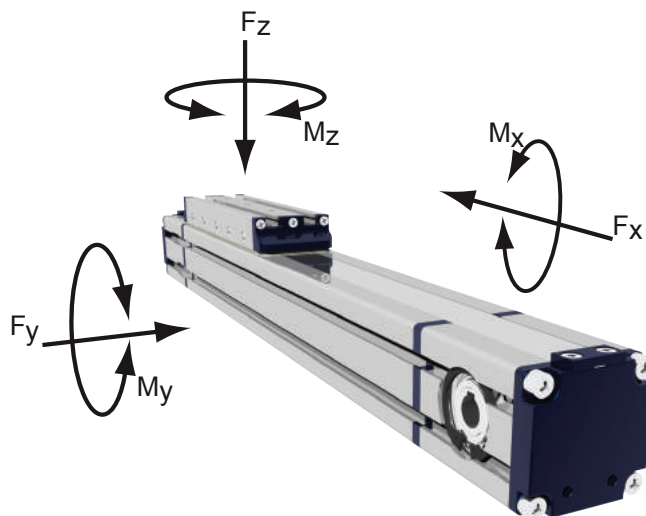
Belt driven guided linear unit  
 Linearantrieb mit Zahnriemen und integrierter Kugelumlauführung  
 Attuatori lineari a cinghia e guida a ricircolo di sfere

**MTB42-XXXX-XX**

**TECHNICAL DATA - TECHNISCHE DATEN - - DATI TECNICI**

Size - Baugröße - Taglia		42x42
Max. speed - Max. Geschwindigkeit - Velocità max	m/s	3
Max. stroke length - Max. Hub - Corsa max	mm	6700*
Min. stroke length - Min. Hub - Corsa min	mm	100
Pulley drive ratio - Hub pro Umdrehung - Corsa/giro puleggia	mm	90
Number of teeth of pulley - Zähne der Riemenscheibe - nr. denti puleggia		18
Teeth belt with Steel Reinforced Polyurethane ATL 5 profile clearance 0, width 12 mm ATL 5-Profil Riemen 12 mm Breite- 5mm Achsabstand Tipo di cinghia profilo ATL passo 5 larghezza 12 mm		
Max rpm - Max. Drehzahl der Antriebswelle - Max nr. di giri in ingresso	rpm	2000
Base weight - Gewicht bei 0mm Hub - Peso corsa 0 mm	Kg	1,6
Add for 100 mm of stroke - Gewicht bei 100mm Hub - Peso corsa 100 mm	Kg	0,25
Max. load* - Max. Belastung - Carico max*	Fx	N 460
	Fy	N 1560
	Fz	N 1560
Moments* - Max. Belastungsmoment* - Momenti max*	Mx	Nm 20
	My	Nm 55
	Mz	Nm 55
Inertia moment Aluminum profile - Flächenträgheitsmoment - Momento d'inerzia profilo	Ix	cm <sup>4</sup> 11,8
Inertia moment Aluminum profile - Flächenträgheitsmoment - Momento d'inerzia profilo	Iy	cm <sup>4</sup> 14,2
Repeatability - Wiederholgenauigkeit - Ripetibilità	mm	± 0,05
Max. radial load on input shaft - Max. axillasten an der Antriebswelle - Carico assiale max all'albero motore	N	220
No load torque - Leerlaufmoment - Coppia resistente	Nm	>0,1

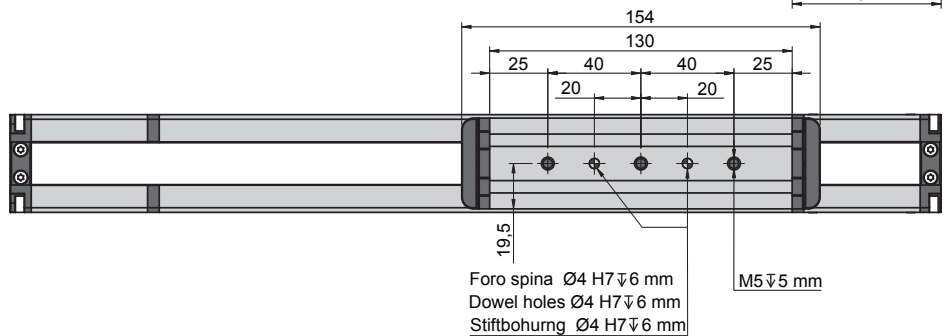
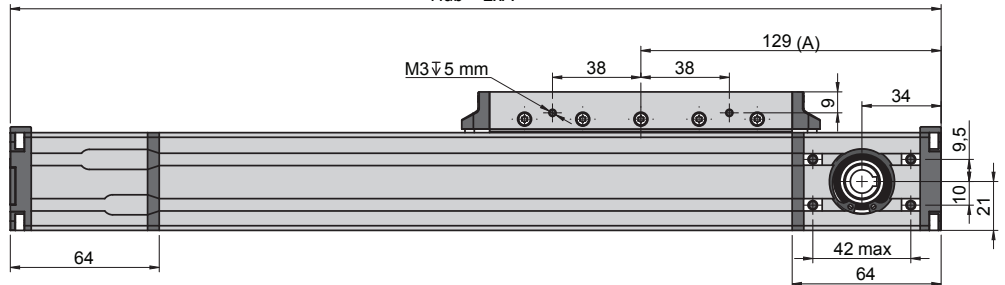
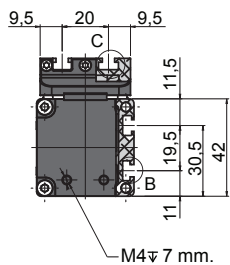
The moments and the loads above are max. values. For any further information, please contact our technical department.  
 Die angegebenen Momente und Belastungen sind max. Werte, die nicht überschritten werden sollen. Für weitere Info, bitte wenden Sie sich an unserem Konstruktionsbüro.  
 I carichi e i momenti indicati sono massimi consigliati, per ulteriori informazioni consultare il ns ufficio tecnico.



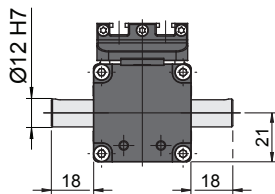
Belt driven guided linear unit  
 Linearantrieb mit Zahnriemen und integrierter Kugelumlauführung  
 Attuatori lineari a cinghia e guida a ricircolo di sfere

**MTB42-XXXX-XX**

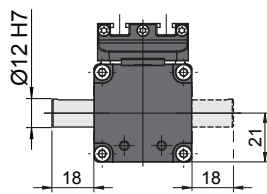
Corsa + 2xA  
 Stroke + 2xA  
 Hub + 2xA



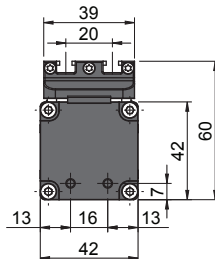
Versione albero  
 Shaft version  
 Versionen Antriebeswelle



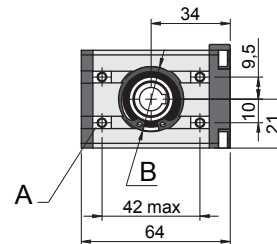
**D2**



**M2L-R**

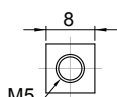
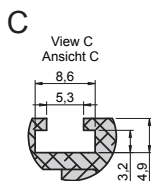


**F2-F0**

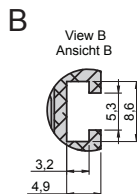


**A** Dadi quadri M5 DIN526 già inclusi  
 Square nut M5 DIN526 already included  
 Vierkantmutter M5 DIN526 im Lieferumfang enthalten

**B** Per tutte le versioni d'albero Ø32 H7 prof. 1,5 mm  
 For all shaft version Ø32 H7 deep 1,5 mm  
 Für alle Wellen-Versionen Ø32 H7 tief 1,5 mm



Codice: DQM05-2  
 Part n.: DQM05-2  
 Bestellcode: DQM05-2



Codice: DQM05-1  
 Part n.: DQM05-1  
 Bestellcode: DQM05-1

**Ordering information:**  
**MTB42-0900-F2**

Shaft version:  
 F0: female shaft Ø10 mm with keyshaft  
 F2: female shaft Ø12 mm with keyshaft  
 M2L or R: male shaft Ø12 mm mount right or left  
 D2: double male shaft Ø12 mm  
 Stroke mm  
 Series and size 42x42



Left mount M2L  
 Antriebswelle links M2L  
 Lato sinistro M2L



Dual mount D2  
 Doppelwelle D2  
 Doppio albero D2



Right mount M2R  
 Antriebswelle rechts M2R  
 Lato destro M2R

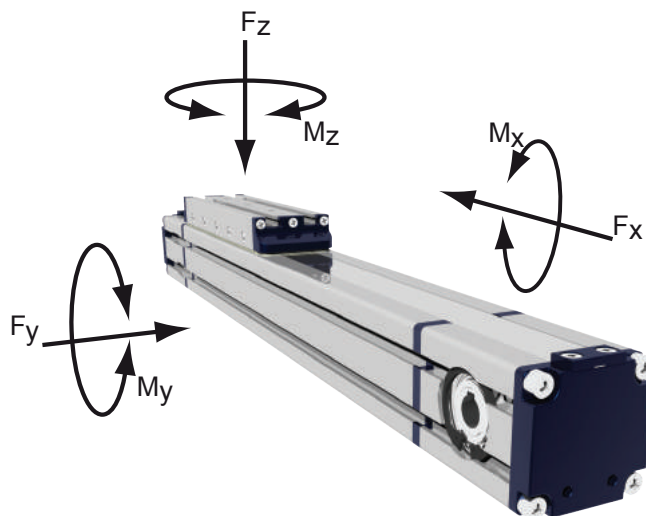
Belt driven guided linear unit  
 Linearantrieb mit Zahnriemen und integrierter Kugelumlauführung  
 Attuatori lineari a cinghia e guida a ricircolo di sfere

**MTB55 -XXXX-XX**

**TECHNICAL DATA - TECHNISCHE DATEN - - DATI TECNICI**

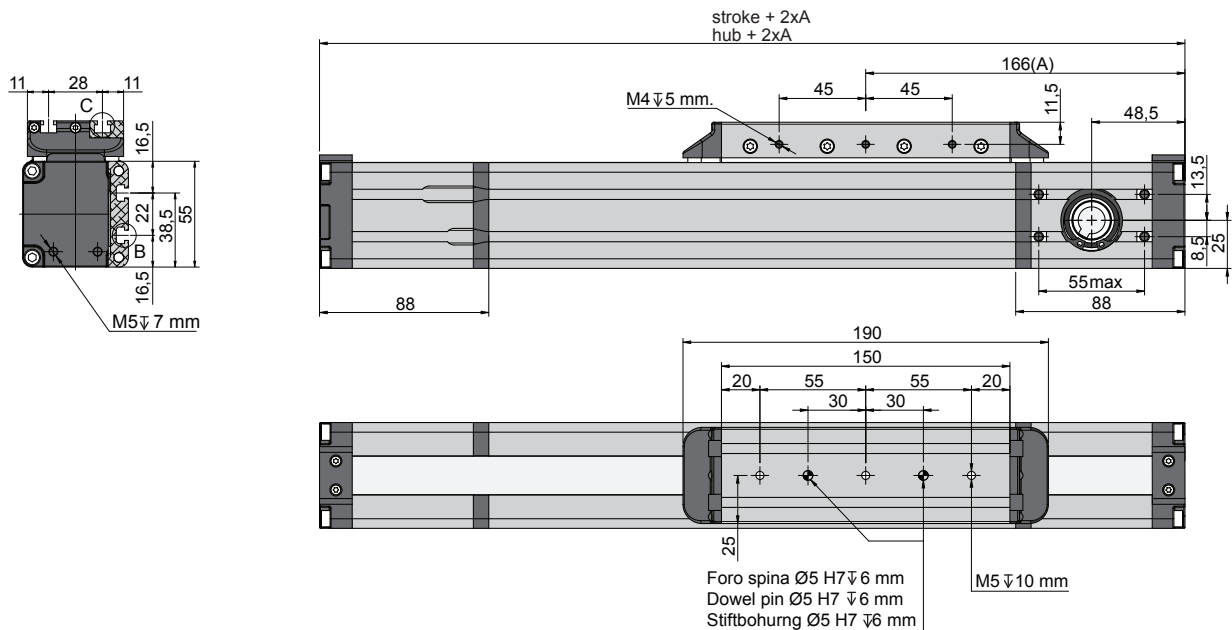
Size - Baugröße - Taglia			55x55
Max. speed - Max. Geschwindigkeit - Velocità max		m/s	3
Max. stroke length - Max. Hub - Corsa max		mm	6700*
Min. stroke length - Min. Hub - Corsa min		mm	100
Pulley drive ratio - Hub pro Umdrehung - Corsa/giro puleggia		mm	120
Number of teeth of pulley - Zähne der Riemenscheibe - nr. denti puleggia			24
Teeth belt with Steel Reinforced Polyurethane ATL 5 profile clearance 0, width 16 mm ATL 5-Profil Riemen 16 mm Breite- 5mm Achsabstand Tipo di cinghia profilo ATL passo 5 larghezza 16 mm			
Max rpm - Max. Drehzahl der Antriebswelle - Max nr. di giri in ingresso		rpm	1500
Base weight - Gewicht bei 0mm Hub - Peso corsa 0 mm		Kg	4,8
Add for 100 mm of stroke - Gewicht bei 100mm Hub - Peso corsa 100 mm		Kg	0,37
Max. load* - Max. Belastung - Carico max*	Fx	N	820
	Fy	N	1850
	Fz	N	1850
Moments* - Max. Belastungsmoment* - Momenti max*	Mx	Nm	25
	My	Nm	120
	Mz	Nm	120
Inertia moment Aluminum profile - Flächenträgheitmoment - Momento d'inerzia profilo	Ix	cm <sup>4</sup>	36
Inertia moment Aluminum profile - Flächenträgheitmoment - Momento d'inerzia profilo	Iy	cm <sup>4</sup>	45
Repeatability - Wiederholgenauigkeit - Ripetibilità		mm	± 0,05
Max. radial load on input shaft - Max. axiallasten an der Antriebswelle - Carico assiale max all'albero motore		N	300
No load torque - Leerlaufmoment - Coppia resistente		Nm	>0,5

The moments and the loads above are max. values. For any further information, please contact our technical department.  
 Die angegebenen Momente und Belastungen sind max. Werte, die nicht überschritten werden sollen. Für weitere Info, bitte wenden Sie sich an unserem Konstruktionsbüro.  
 I carichi e i momenti indicati sono massimi consigliati, per ulteriori informazioni consultare il ns ufficio tecnico.

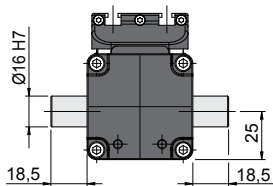


Belt driven guided linear unit  
 Linearantrieb mit Zahnriemen und integrierter Kugelumlauführung  
 Attuatori lineari a cinghia e guida a ricircolo di sfere

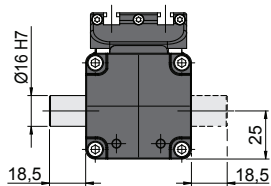
**MTB55-XXXX-XX**



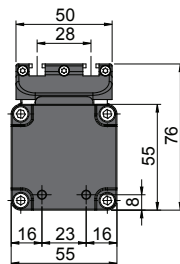
Versioni albero  
 Shaft version  
 Versionen Antriebswelle



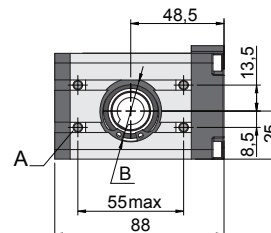
**D6**



**M6L-R**



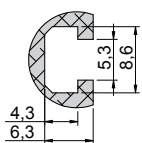
**F2 - F4**



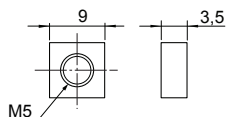
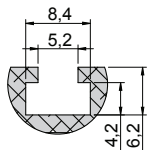
**A** Dadi quadri M5 DIN557 già inclusi  
 Square nut M5 DIN557 already included  
 Vierkantmutter M5 DIN557 im Lieferumfang enthalten

**B** Per tutte le versioni d'albero Ø32 H7 prof 1,5 mm  
 For all shaft version Ø32 H7 deep 1,5 mm  
 Für alle Wellen-Versionen Ø32 H7 1,5 mm tief

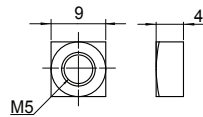
Vista B  
 View B  
 Ansicht C



Vista C  
 View C  
 Ansicht C



Codice: DQM05-01  
 Part n.: DQM05-01  
 Bestellcode: DQM05-01



Codice: DQM05  
 Part n.: DQM05  
 Bestellcode: DQM05

Ordering information:

**MTB55-0900-F4**

**Shaft version:**

- F2: female shaft Ø12 mm with keyshaft
- F4: female shaft Ø14 mm with keyshaft
- M6L or R: male shaft Ø16 mm mount right or left
- D6: double male shaft Ø16 mm

**Stroke mm**

**Series and size 55x55**



Left mount M6L  
 Antriebswelle links M6L  
 Lato sinistro M6L



Dual mount D6  
 Doppelwelle D6  
 Doppio albero D6



Right mount M6R  
 Antriebswelle rechts M6R  
 Lato destro M6R

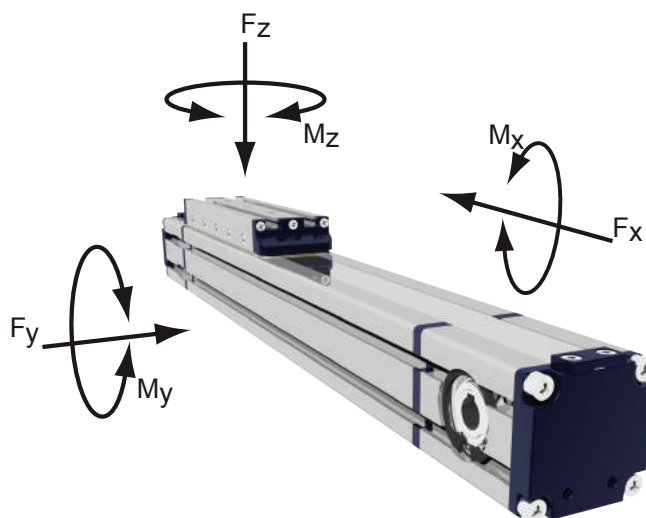
Belt driven guided linear unit  
 Linearantrieb mit Zahnriemen und integrierter Kugelumlauführung  
 Attuatori lineari a cinghia e guida a ricircolo di sfere

**MTB80-XXXX-XX**

**TECHNICAL DATA - TECHNISCHE DATEN - - DATI TECNICI**

Size - Baugröße - Taglia			80x80
Max. speed - Max. Geschwindigkeit - Velocità max		m/s	3
Max. stroke length - Max. Hub - Corsa max		mm	6700*
Min. stroke length - Min. Hub - Corsa min		mm	100
Pulley drive ratio - Hub pro Umdrehung - Corsa/giro puleggia		mm	160
Number of teeth of pulley - Zähne der Riemenscheibe - nr. denti puleggia			32
Teeth belt with Steel Reinforced Polyurethane ATL 5 profile clearance 0, width 25 mm ATL 5-Profil Riemen 25 mm Breite- 5mm Achsabstand Tipo di cinghia profilo ATL passo 5 larghezza 25 mm			
Max rpm - Max. Drehzahl der Antriebswelle - Max nr. di giri in ingresso		rpm	1150
Base weight - Gewicht bei 0mm Hub - Peso corsa 0 mm		Kg	6
Add for 100 mm of stroke - Gewicht bei 100mm Hub - Peso corsa 100 mm		Kg	0,9
Max. load* - Max. Belastung - Carico max*	Fx	N	1650
	Fy	N	4500
	Fz	N	4500
Moments* - Max. Belastungsmoment* - Momenti max*	Mx	Nm	80
	My	Nm	450
	Mz	Nm	450
Inertia moment Aluminum profile - Flächenträgheitmoment - Momento d'inerzia profilo	Ix	cm <sup>4</sup>	183
Inertia moment Aluminum profile - Flächenträgheitmoment - Momento d'inerzia profilo	Iy	cm <sup>4</sup>	226
Repeatability - Wiederholgenauigkeit - Ripetibilità		mm	± 0,05
Max. radial load on input shaft - Max. axiallylasten an der Antriebswelle - Carico assiale max all'albero motore		N	300
No load torque - Leerlaufmoment - Coppia resistente		Nm	0,9

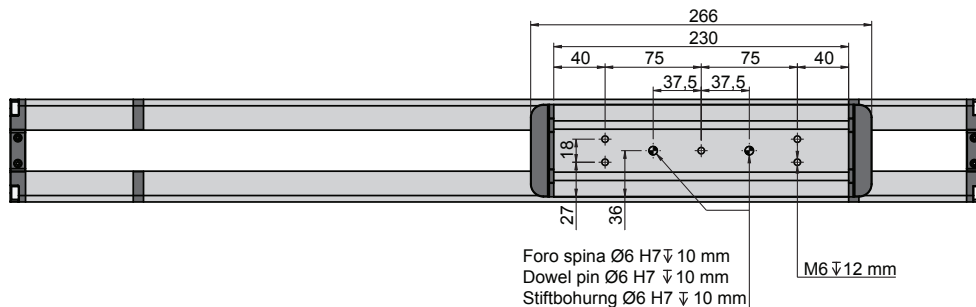
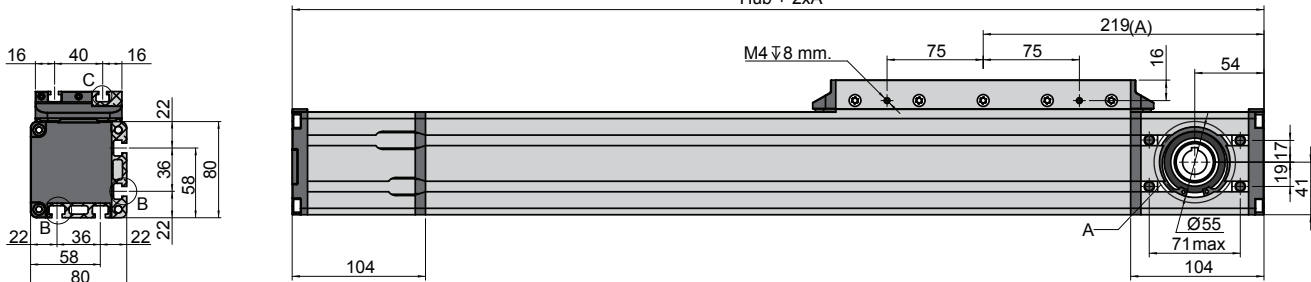
The moments and the loads above are max. values. For any further information, please contact our technical department.  
 Die angegebenen Momente und Belastungen sind max. Werte, die nicht überschritten werden sollen. Für weitere Info, bitte wenden Sie sich an unserem Konstruktionsbüro.  
 I carichi e i momenti indicati sono massimi consigliati, per ulteriori informazioni consultare il ns ufficio tecnico.



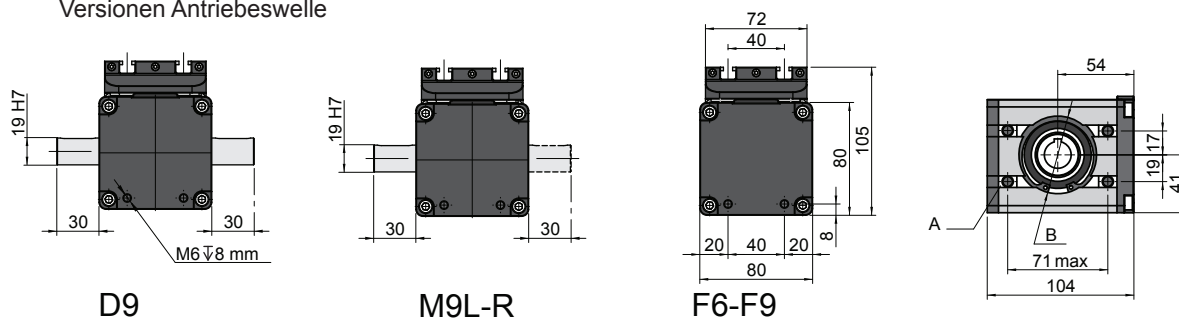
Belt driven guided linear unit  
 Linearantrieb mit Zahnriemen und integrierter Kugelumlauführung  
 Attuatori lineari a cinghia e guida a ricircolo di sfere

**MTB80-XXXX-XX**

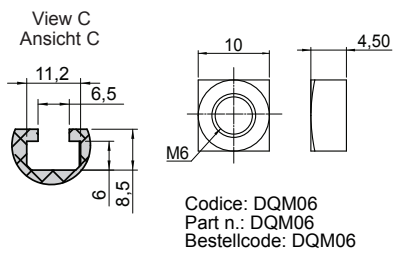
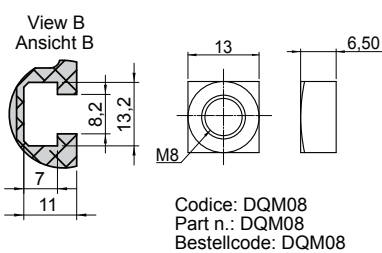
Corsa + 2xA  
 Stroke + 2xA  
 Hub + 2xA



Versioni albero  
 Shaft version  
 Versionen Antriebeswelle



- A** Dadi quadri M8 DIN557 già inclusi  
 Square nut M8 DIN557 already included  
 Vierkantmutter M8 DIN557 im Lieferumfang enthalten
- B** Per tutte le versioni d'albero Ø55 H7 prof 2 mm  
 For all shaft version Ø55 H7 deep 2 mm  
 Für alle Wellen-Versionen Ø55 H7 2 mm tief



Ordering information:

**MTB80-0900-F9**

- Shaft version:**  
 F6: female shaft Ø16 mm with keyshaft  
 F9: female shaft Ø19 mm with keyshaft  
 M9L or R: male shaft Ø19 mm mount right or left  
 D9: double male shaft Ø19 mm

**Stroke mm**  
**Series and size 80x80**



Left mount M9L  
 Antriebswelle links M9L  
 Lato sinistro M9L



Dual mount D9  
 Doppelwelle D9  
 Doppio albero D9



Right mount M9R  
 Antriebswelle rechts M9R  
 Lato destro M9R



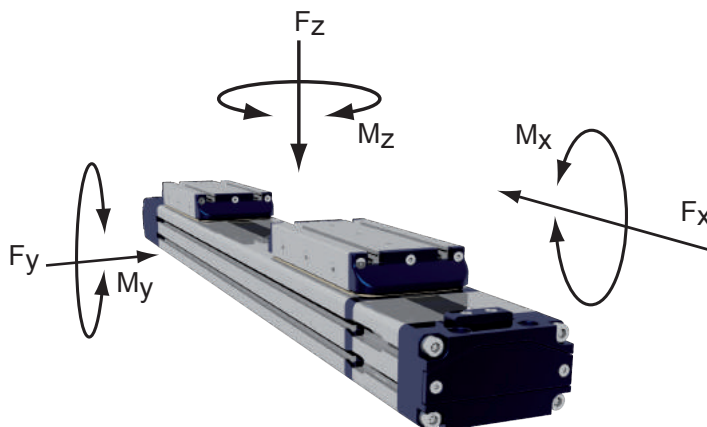
Belt driven guided linear unit  
 Linearantrieb mit Zahnriemen und integrierter Kugelumlauführung  
 Attuatori lineari a cinghia e guida a ricircolo di sfere

**MTF 42DH-XXXX-XX**

**TECHNICAL DATA - TECHNISCHE DATEN - - DATI TECNICI**

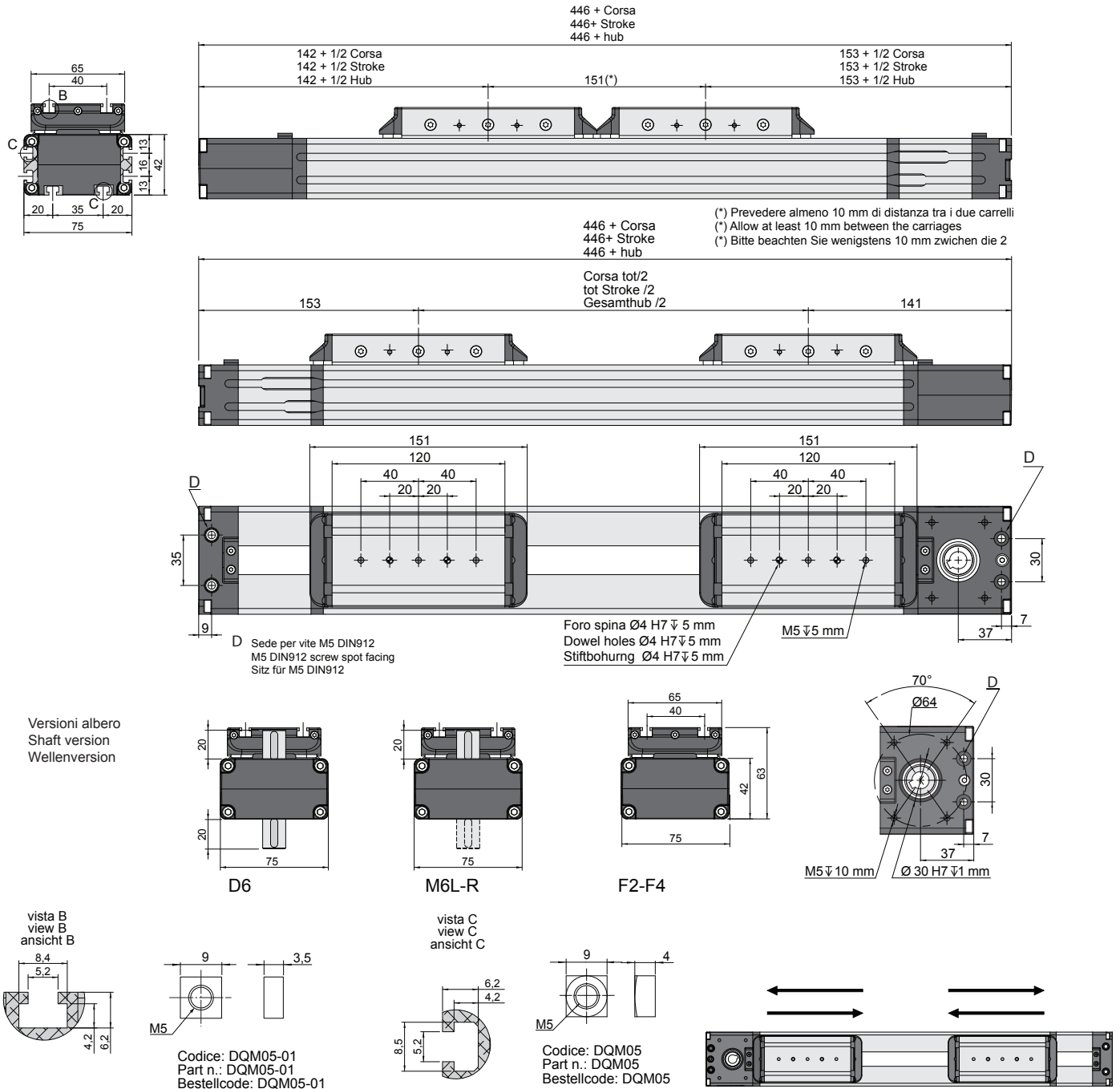
Size - Baugröße - Taglia			42x75
Max. speed - Max. Geschwindigkeit - Velocità max		m/s	3
Max. stroke length - Max. Hub - Corsa max		mm	6600*
Min. stroke length - Min. Hub - Corsa min		mm	100
Pulley drive ratio - Hub pro Umdrehung - Corsa/giro puleggia		mm	130
Number of teeth of pulley - Zähne der Riemenscheibe - nr. denti puleggia			26
Teeth belt with Steel Reinforced Polyurethane ATL 5 profile clearance 0, width 12 mm ATL 5-Profil Riemen 12 mm Breite- 5mm Achsabstand Tipo di cinghia profilo ATL passo 5 larghezza 12 mm			
Max rpm - Max. Drehzahl der Antriebswelle - Max nr. di giri in ingresso		rpm	1400
Base weight - Gewicht bei 0mm Hub - Peso corsa 0 mm		Kg	3,7
Add for 100 mm of stroke - Gewicht bei 100mm Hub - Peso corsa 100 mm		Kg	0,32
Max. load* - Max. Belastung - Carico max* (each carriage - Jede last - ogni carrello)	Fx	N	398
	Fy	N	1275
	Fz	N	1275
Moments* - Max. Belastungsmoment* - Momenti max* (each carriage - Jede last - ogni carrello)	Mx	Nm	18
	My	Nm	110
	Mz	Nm	110
Inertia moment Aluminum profile - Flächenträgheitmoment - Momento d'inerzia profilo	Ix	cm <sup>4</sup>	28
Inertia moment Aluminum profile - Flächenträgheitmoment - Momento d'inerzia profilo	Iy	cm <sup>4</sup>	37
Repeatability - Wiederholgenauigkeit - Ripetibilità		mm	± 0,05
Max. radial load on input shaft - Max. axillasten an der Antriebswelle - Carico assiale max all'albero motore		N	250
No load torque - Leerlaufmoment - Coppia resistente		Nm	>0,8

\*The moments and the loads above are max. values. For any further information, please contact our technical department.  
 Die angegebenen Momente und Belastungen sind max. Werte, die nicht überschritten werden sollen. Für weitere Info, bitte wenden Sie sich an unserem Konstruktionsbüro.  
 I carichi e i momenti indicati sono massimi consigliati, per ulteriori informazioni consultare il ns ufficio tecnico.



Belt driven guided linear unit  
 Linearantrieb mit Zahnriemen und integrierter Kugelumlauführung  
 Attuatori lineari a cinghia e guida a ricircolo di sfere

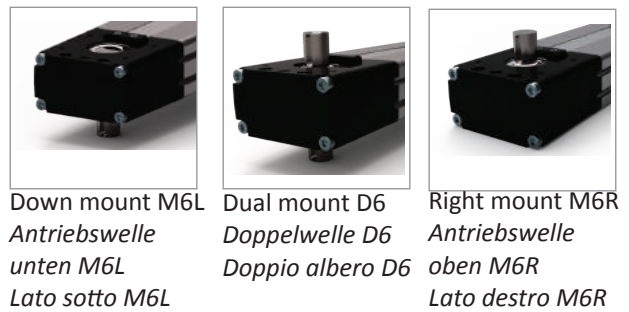
**MTF 42DH-XXXX-XX**



Ordering information:

**MTF42DH-0900-F4**

- Shaft version:**
  - F2: female shaft Ø12 mm with keyshaft
  - F4: female shaft Ø14 mm with keyshaft
  - M6L or R: male shaft Ø16 mm mount right or left
  - D6: double male shaft Ø19 mm
- Stroke mm**
  - DH: double carriage double runner block,
  - DL: double carriage single runner block
- Series and size 42x75**





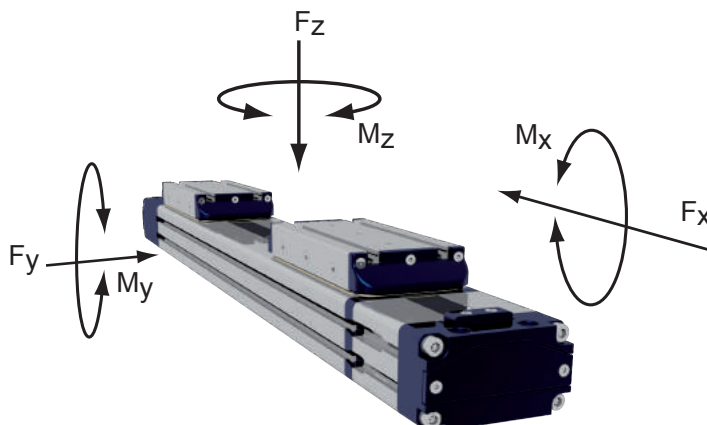
Belt driven guided linear unit  
 Linearantrieb mit Zahnriemen und integrierter Kugelumlauführung  
 Attuatori lineari a cinghia e guida a ricircolo di sfere

**MTF 42DL-XXXX-XX**

**TECHNICAL DATA - TECHNISCHE DATEN - - DATI TECNICI**

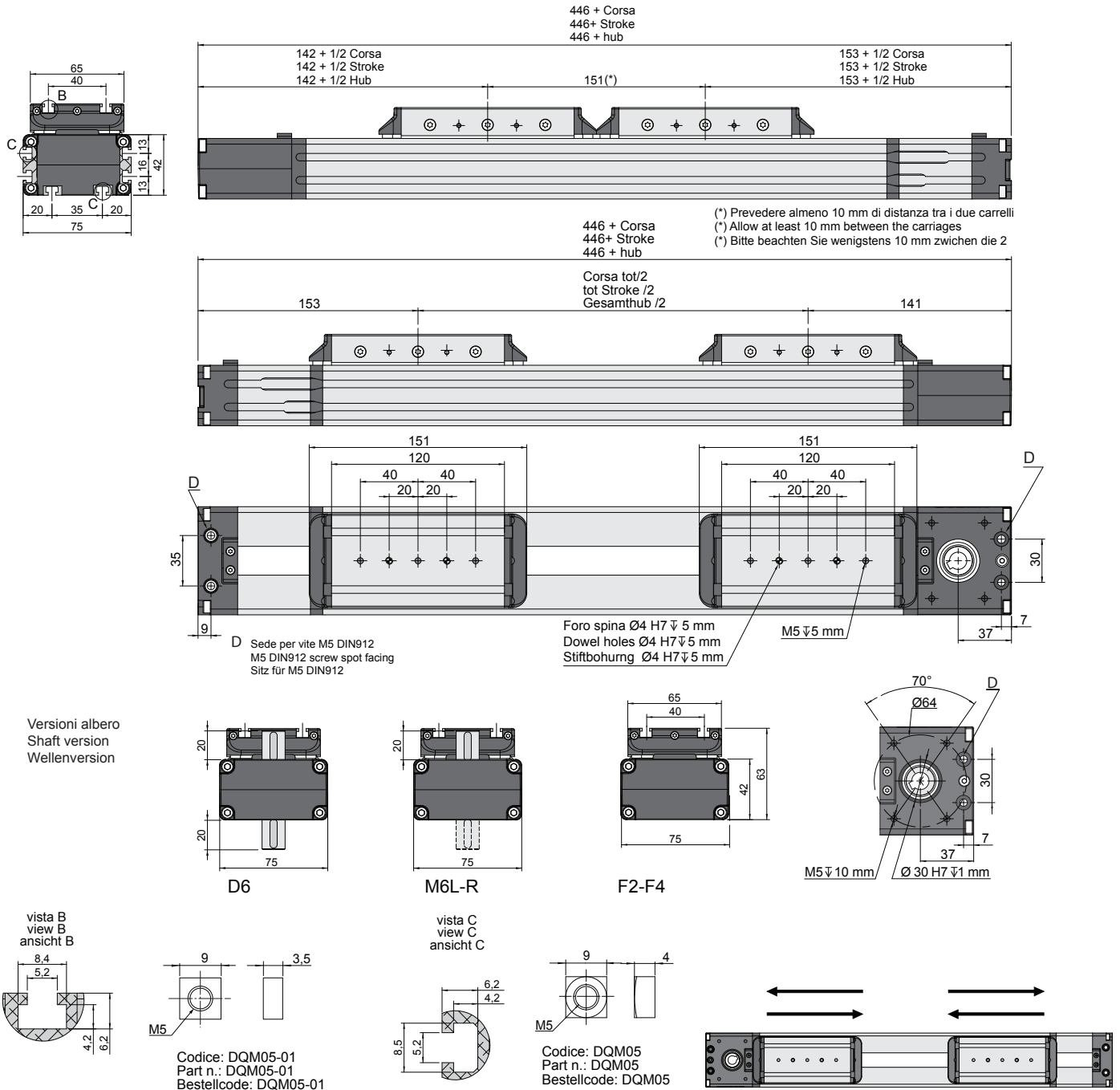
<i>Size - Baugröße - Taglia</i>			42x75
<i>Max. speed - Max. Geschwindigkeit - Velocità max</i>		m/s	3
<i>Max. stroke length - Max. Hub - Corsa max</i>		mm	6600*
<i>Min. stroke length - Min. Hub - Corsa min</i>		mm	100
<i>Pulley drive ratio - Hub pro Umdrehung - Corsa/giro puleggia</i>		mm	130
<i>Number of teeth of pulley - Zähne der Riemenscheibe - nr. denti puleggia</i>			26
<i>Teeth belt with Steel Reinforced Polyurethane ATL 5 profile clearance 0, width 12 mm</i>			
<i>ATL 5-Profil Riemen 12 mm Breite- 5mm Achsabstand</i>			
<i>Tipo di cinghia profilo ATL passo 5 larghezza 12 mm</i>			
<i>Max rpm - Max. Drehzahl der Antriebswelle - Max nr. di giri in ingresso</i>		rpm	1400
<i>Base weight - Gewicht bei 0mm Hub - Peso corsa 0 mm</i>		Kg	3,1
<i>Add for 100 mm of stroke - Gewicht bei 100mm Hub - Peso corsa 100 mm</i>		Kg	0,32
<i>Max. load* - Max. Belastung - Carico max* (each carriage - Jede last - ogni carrello)</i>	Fx	N	398
	Fy	N	635
	Fz	N	635
<i>Moments* - Max. Belastungsmoment* - Momenti max* (each carriage - Jede last - ogni carrello)</i>	Mx	Nm	9
	My	Nm	55
	Mz	Nm	55
<i>Inertia moment Aluminum profile - Flächenträgheitmoment - Momento d'inerzia profilo</i>	Ix	cm <sup>4</sup>	28
<i>Inertia moment Aluminum profile - Flächenträgheitmoment - Momento d'inerzia profilo</i>	Iy	cm <sup>4</sup>	37
<i>Repeatability - Wiederholgenauigkeit - Ripetibilità</i>		mm	± 0,05
<i>Max. radial load on input shaft - Max. axillasten an der Antriebswelle - Carico assiale max all'albero motore</i>		N	250
<i>No load torque - Leerlaufmoment - Coppia resistente</i>		Nm	>0,5

*\*The moments and the loads above are max. values. For any further information, please contact our technical department.  
 Die angegebenen Momente und Belastungen sind max. Werte, die nicht überschritten werden sollen. Für weitere Info, bitte wenden Sie sich an unserem Konstruktionsbüro.  
 I carichi e i momenti indicati sono massimi consigliati, per ulteriori informazioni consultare il ns ufficio tecnico.*



Belt driven guided linear unit  
 Linearantrieb mit Zahnriemen und integrierter Kugelumlauführung  
 Attuatori lineari a cinghia e guida a ricircolo di sfere

**MTF 42DL-XXXX-XX**



Ordering information:

**MTF42DL -0900 -F4**

**Shaft version:**

- F2: female shaft Ø12 mm with keyshaft
- F4: female shaft Ø14 mm with keyshaft
- M6L or R: male shaft Ø16 mm mount right or left
- D6: double male shaft Ø19 mm

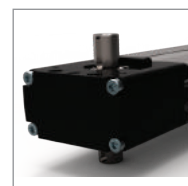
**Stroke mm**

- DH: double carriage double runner block,
- DL: double carriage single runner block

**Series and size 42x75**



Down mount M6L  
 Antriebswelle  
 unten M6L  
 Lato sotto M6L



Dual mount D6  
 Doppelwelle D6  
 Doppio albero D6



Right mount M6R  
 Antriebswelle  
 oben M6R  
 Lato destro M6R

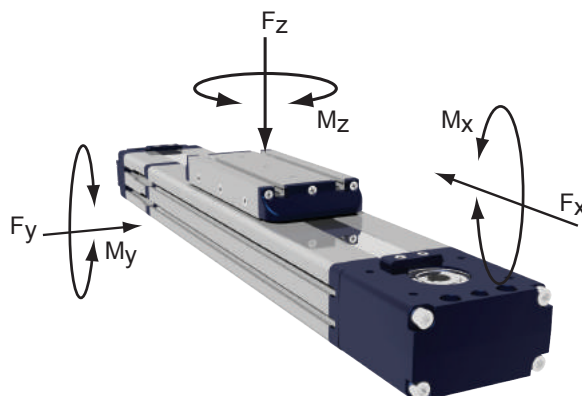
Belt driven guided linear unit  
 Linearantrieb mit Zahnriemen und integrierter Kugelumlauführung  
 Attuatori lineari a cinghia e guida a ricircolo di sfere

**MTF42H-XXXX-XX**

**TECHNICAL DATA - TECHNISCHE DATEN - - DATI TECNICI**

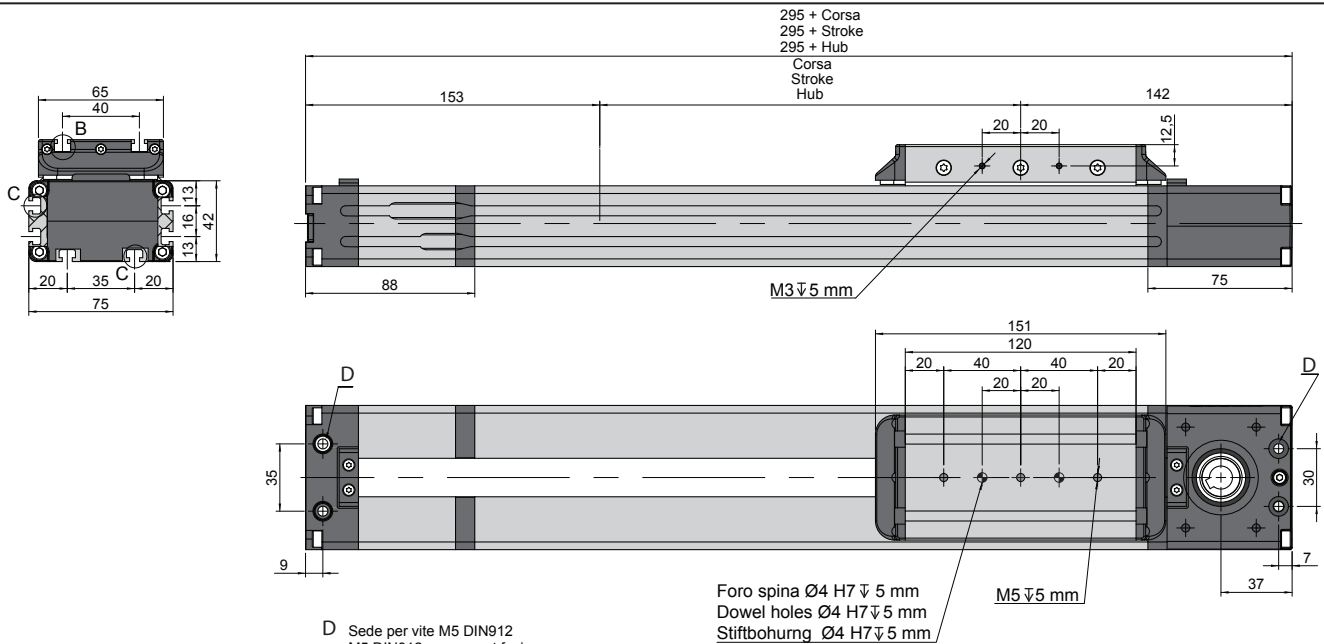
<i>Size - Baugröße - Taglia</i>			42x75
<i>Max. speed - Max. Geschwindigkeit - Velocità max</i>		m/s	3
<i>Max. stroke length - Max. Hub - Corsa max</i>		mm	5700*
<i>Min. stroke length - Min. Hub - Corsa min</i>		mm	100
<i>Pulley drive ratio - Hub pro Umdrehung - Corsa/giro puleggia</i>		mm	130
<i>Number of teeth of pulley - Zähne der Riemenscheibe - nr. denti puleggia</i>			26
<i>Teeth belt with Steel Reinforced Polyurethane ATL 5 profile clearance 0, width 12 mm</i>			
<i>ATL 5-Profil Riemen 12 mm Breite- 5mm Achsabstand</i>			
<i>Tipo di cinghia profilo ATL passo 5 larghezza 12 mm</i>			
<i>Max rpm - Max. Drehzahl der Antriebswelle - Max nr. di giri in ingresso</i>		rpm	1400
<i>Base weight - Gewicht bei 0mm Hub - Peso corsa 0 mm</i>		Kg	2,8
<i>Add for 100 mm of stroke - Gewicht bei 100mm Hub - Peso corsa 100 mm</i>		Kg	0,32
<i>Max. load* - Max. Belastung - Carico max*</i>	Fx	N	615
	Fy	N	1275
	Fz	N	1275
<i>Moments* - Max. Belastungsmoment* - Momenti max*</i>	Mx	Nm	18
	My	Nm	110
	Mz	Nm	110
<i>Inertia moment Aluminum profile - Flächenträgheitmoment - Momento d'inerzia profilo</i>	Ix	cm <sup>4</sup>	28
<i>Inertia moment Aluminum profile - Flächenträgheitmoment - Momento d'inerzia profilo</i>	Iy	cm <sup>4</sup>	37
<i>Repeatability - Wiederholgenauigkeit - Ripetibilità</i>		mm	± 0,05
<i>Max. radial load on input shaft - Max. axiallylasten an der Antriebswelle - Carico assiale max all'albero motore</i>		N	250
<i>No load torque - Leerlaufmoment - Coppia resistente</i>		Nm	>0,5

*The moments and the loads above are max. values. For any further information, please contact our technical department.  
 Die angegebenen Momente und Belastungen sind max. Werte, die nicht überschritten werden sollen. Für weitere Info, bitte wenden Sie sich an unserem Konstruktionsbüro.  
 I carichi e i momenti indicati sono massimi consigliati, per ulteriori informazioni consultare il ns ufficio tecnico.*



Belt driven guided linear unit  
 Linearantrieb mit Zahnriemen und integrierter Kugelumlauführung  
 Attuatori lineari a cinghia e guida a ricircolo di sfere

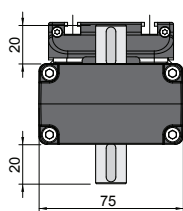
**MTF42H-XXXX-XX**



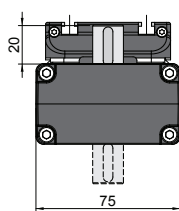
D Sede per vite M5 DIN912  
 M5 DIN912 screw spot facing  
 Sitz für M5 DIN912

Foro spina Ø4 H7/5 mm  
 Dowel holes Ø4 H7/5 mm  
 Stiftbohrung Ø4 H7/5 mm

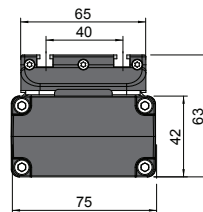
Versioni albero  
 Shaft version  
 Wellenversion



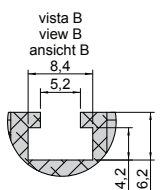
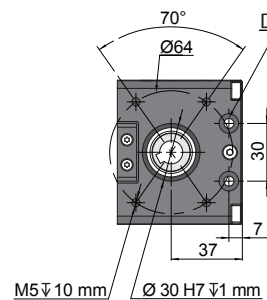
D6



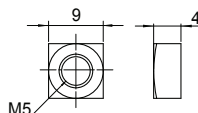
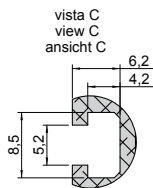
M6L-R



F2-F4



Codice: DQM05-01  
 Part n.: DQM05-01  
 Bestellcode: DQM05-01



Codice: DQM05  
 Part n.: DQM05  
 Bestellcode: DQM05

Ordering information:

**MTF42H-0900-F4**

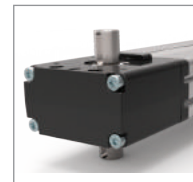
**Shaft version:**  
 F2: female shaft Ø12 mm with keyshaft  
 F4: female shaft Ø14 mm with keyshaft  
 M6L or R: male shaft Ø16 mm mount right or left  
 D6: double male shaft Ø19 mm

**Stroke mm**  
**H:** double runner block,  
**L:** single runner block

**Series and size 42x75**



Down mount M6L  
 Antriebswelle  
 unten M6L  
 Lato sotto M6L



Dual mount D6  
 Doppelwelle D6  
 Doppio albero D6



Right mount M6R  
 Antriebswelle  
 oben M6R  
 Lato destro M6R

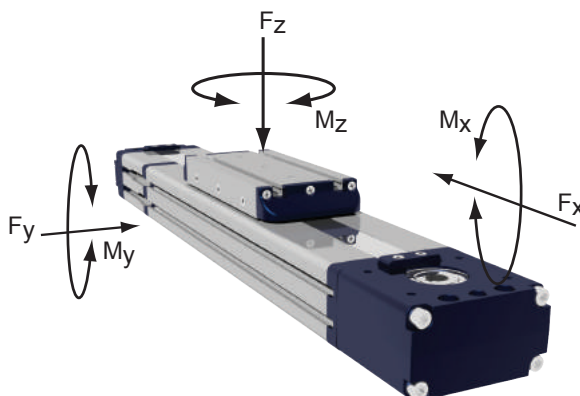
Belt driven guided linear unit  
 Linearantrieb mit Zahnriemen und integrierter Kugelumlauführung  
 Attuatori lineari a cinghia e guida a ricircolo di sfere

**MTF 42L-XXXX-XX**

**TECHNICAL DATA - TECHNISCHE DATEN - - DATI TECNICI**

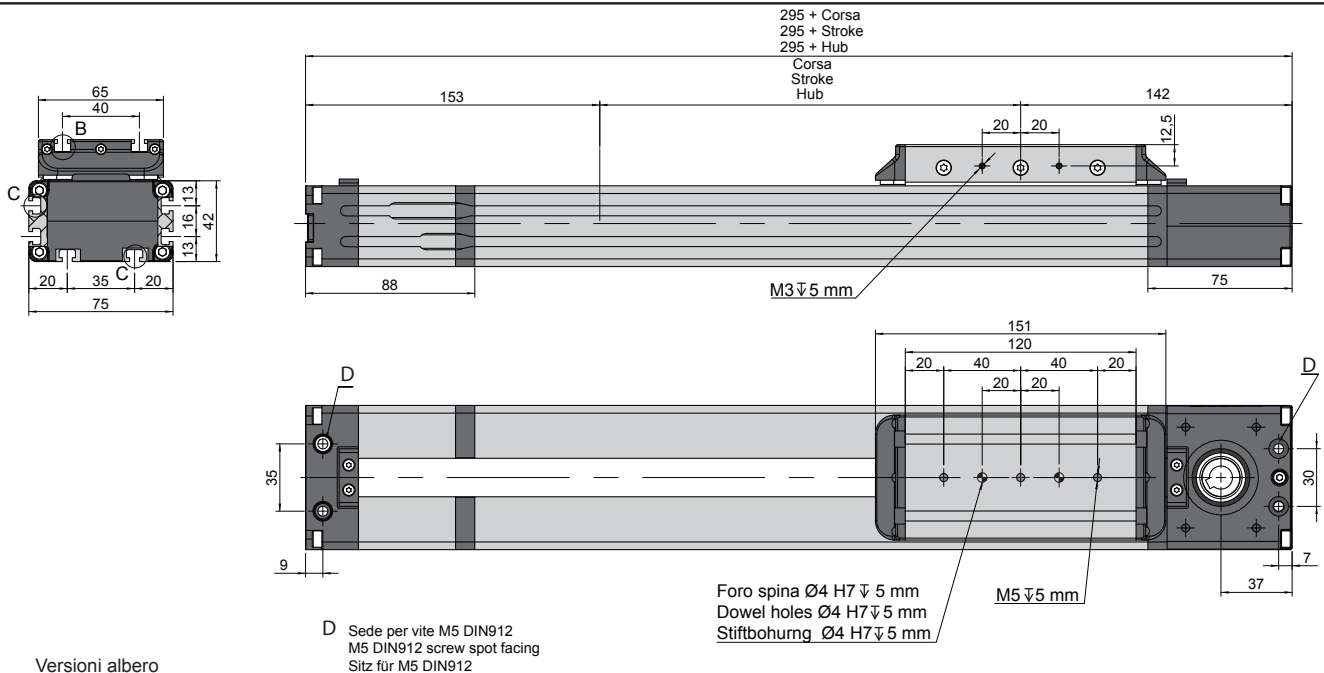
<i>Size - Baugröße - Taglia</i>			42x75
<i>Max. speed - Max. Geschwindigkeit - Velocità max</i>		m/s	3
<i>Max. stroke length - Max. Hub - Corsa max</i>		mm	5700*
<i>Min. stroke length - Min. Hub - Corsa min</i>		mm	100
<i>Pulley drive ratio - Hub pro Umdrehung - Corsa/giro puleggia</i>		mm	130
<i>Number of teeth of pulley - Zähne der Riemenscheibe - nr. denti puleggia</i>			26
<i>Teeth belt with Steel Reinforced Polyurethane ATL 5 profile clearance 0, width 12 mm</i>			
<i>ATL 5-Profil Riemen 12 mm Breite- 5mm Achsabstand</i>			
<i>Tipo di cinghia profilo ATL passo 5 larghezza 12 mm</i>			
<i>Max rpm - Max. Drehzahl der Antriebswelle - Max nr. di giri in ingresso</i>		rpm	1400
<i>Base weight - Gewicht bei 0mm Hub - Peso corsa 0 mm</i>		Kg	2,5
<i>Add for 100 mm of stroke - Gewicht bei 100mm Hub - Peso corsa 100 mm</i>		Kg	0,32
<i>Max. load* - Max. Belastung - Carico max*</i>	Fx	N	615
	Fy	N	640
	Fz	N	640
<i>Moments* - Max. Belastungsmoment* - Momenti max*</i>	Mx	Nm	9
	My	Nm	55
	Mz	Nm	55
<i>Inertia moment Aluminum profile - Flächenträgheitmoment - Momento d'inerzia profilo</i>	Ix	cm <sup>4</sup>	28
<i>Inertia moment Aluminum profile - Flächenträgheitmoment - Momento d'inerzia profilo</i>	Iy	cm <sup>4</sup>	37
<i>Repeatability - Wiederholgenauigkeit - Ripetibilità</i>		mm	± 0,05
<i>Max. radial load on input shaft - Max. axiallylasten an der Antriebswelle - Carico assiale max all'albero motore</i>		N	250
<i>No load torque - Leerlaufmoment - Coppia resistente</i>		Nm	>0,35

*The moments and the loads above are max. values. For any further information, please contact our technical department.  
 Die angegebenen Momente und Belastungen sind max. Werte, die nicht überschritten werden sollen. Für weitere Info, bitte wenden Sie sich an unserem Konstruktionsbüro.  
 I carichi e i momenti indicati sono massimi consigliati, per ulteriori informazioni consultare il ns ufficio tecnico.*

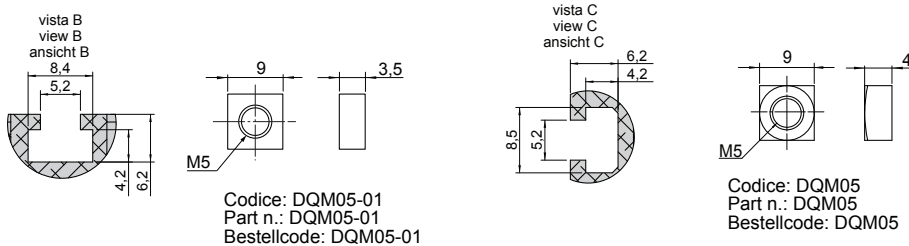
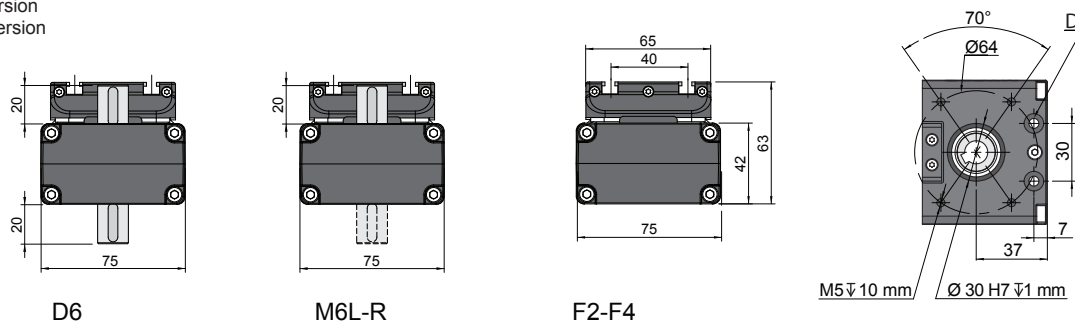


Belt driven guided linear unit  
 Linearantrieb mit Zahnriemen und integrierter Kugelumlauführung  
 Attuatori lineari a cinghia e guida a ricircolo di sfere

**MTF 42L-XXXX-XX**



Versioni albero  
 Shaft version  
 Wellenversion



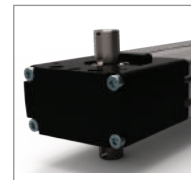
Ordering information:

**MTF42H-0900-F4**

- Shaft version:**
  - F2: female shaft Ø12 mm with keyshaft
  - F4: female shaft Ø14 mm with keyshaft
  - M6L or R: male shaft Ø16 mm mount right or left
  - D6: double male shaft Ø19 mm
- Stroke mm**
- H:** double runner block,
- L:** single runner block
- Series and size 42x75**



Down mount M6L  
 Antriebswelle  
 unten M6L  
 Lato sotto M6L



Dual mount D6  
 Doppelwelle D6  
 Doppio albero D6



Right mount M6R  
 Antriebswelle  
 oben M6R  
 Lato destro M6R



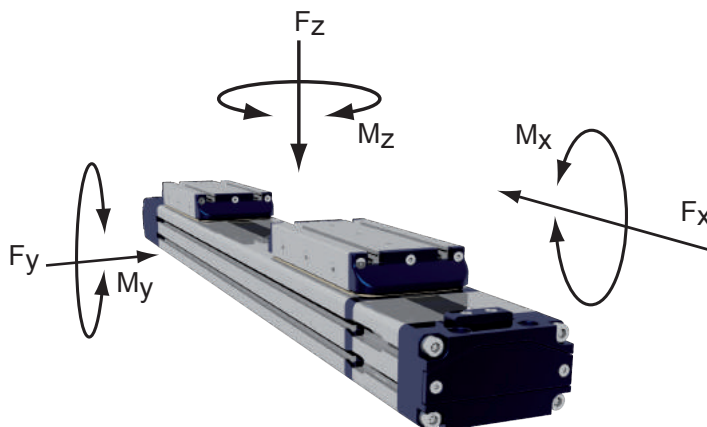
Belt driven guided linear unit  
 Linearantrieb mit Zahnriemen und integrierter Kugelumlauführung  
 Attuatori lineari a cinghia e guida a ricircolo di sfere

**MTF 42DH-XXXX-XX**

**TECHNICAL DATA - TECHNISCHE DATEN - - DATI TECNICI**

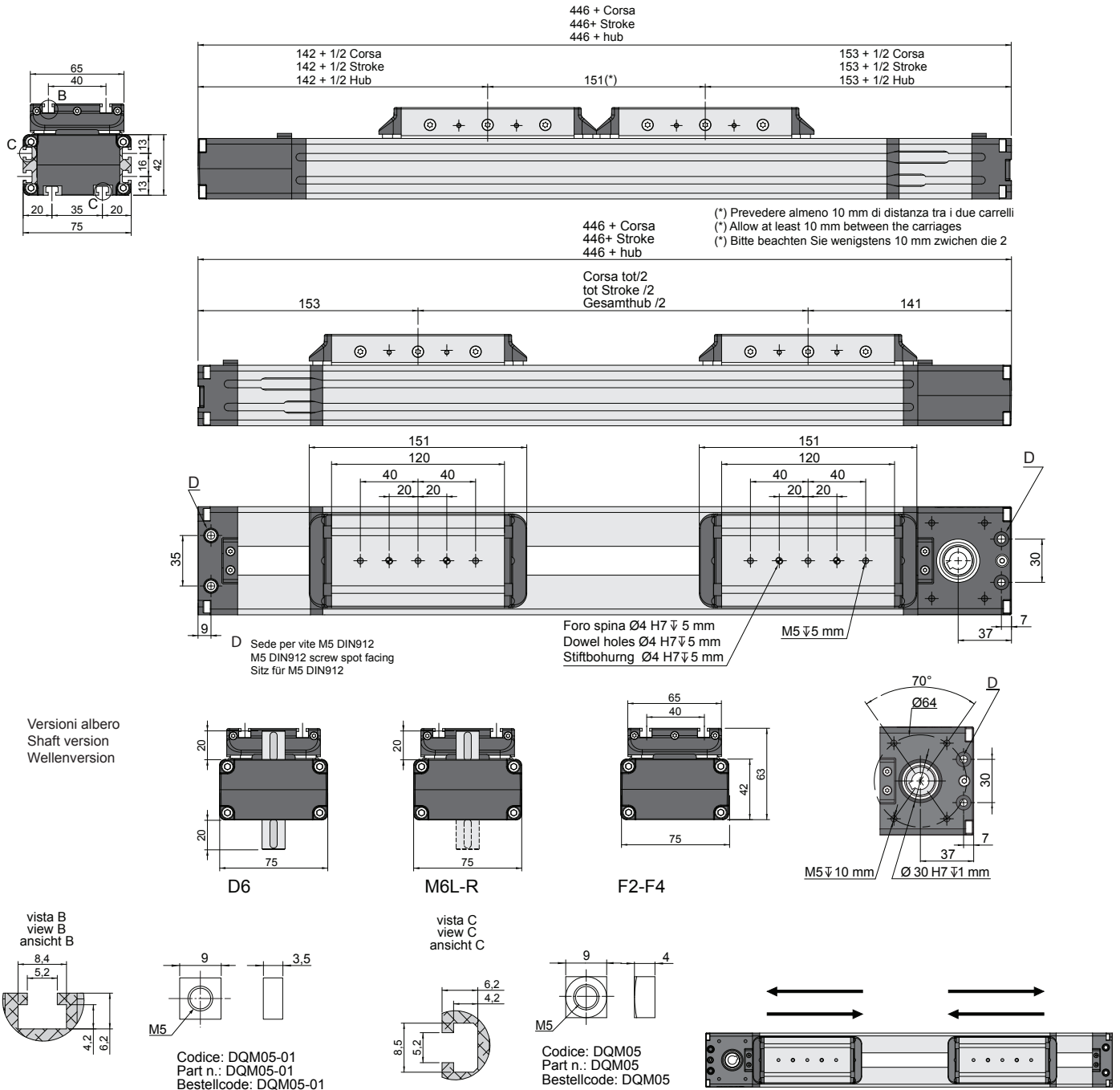
<i>Size - Baugröße - Taglia</i>			42x75
<i>Max. speed - Max. Geschwindigkeit - Velocità max</i>		m/s	3
<i>Max. stroke length - Max. Hub - Corsa max</i>		mm	6600*
<i>Min. stroke length - Min. Hub - Corsa min</i>		mm	100
<i>Pulley drive ratio - Hub pro Umdrehung - Corsa/giro puleggia</i>		mm	130
<i>Number of teeth of pulley - Zähne der Riemenscheibe - nr. denti puleggia</i>			26
<i>Teeth belt with Steel Reinforced Polyurethane ATL 5 profile clearance 0, width 12 mm</i>			
<i>ATL 5-Profil Riemen 12 mm Breite- 5mm Achsabstand</i>			
<i>Tipo di cinghia profilo ATL passo 5 larghezza 12 mm</i>			
<i>Max rpm - Max. Drehzahl der Antriebswelle - Max nr. di giri in ingresso</i>		rpm	1400
<i>Base weight - Gewicht bei 0mm Hub - Peso corsa 0 mm</i>		Kg	3,7
<i>Add for 100 mm of stroke - Gewicht bei 100mm Hub - Peso corsa 100 mm</i>		Kg	0,32
<i>Max. load* - Max. Belastung - Carico max* (each carriage - Jede last - ogni carrello)</i>	Fx	N	398
	Fy	N	1275
	Fz	N	1275
<i>Moments* - Max. Belastungsmoment* - Momenti max* (each carriage - Jede last - ogni carrello)</i>	Mx	Nm	18
	My	Nm	110
	Mz	Nm	110
<i>Inertia moment Aluminum profile - Flächenträgheitmoment - Momento d'inerzia profilo</i>	Ix	cm <sup>4</sup>	28
<i>Inertia moment Aluminum profile - Flächenträgheitmoment - Momento d'inerzia profilo</i>	Iy	cm <sup>4</sup>	37
<i>Repeatability - Wiederholgenauigkeit - Ripetibilità</i>		mm	± 0,05
<i>Max. radial load on input shaft - Max. axillasten an der Antriebswelle - Carico assiale max all'albero motore</i>		N	250
<i>No load torque - Leerlaufmoment - Coppia resistente</i>		Nm	>0,8

*\*The moments and the loads above are max. values. For any further information, please contact our technical department.  
 Die angegebenen Momente und Belastungen sind max. Werte, die nicht überschritten werden sollen. Für weitere Info, bitte wenden Sie sich an unserem Konstruktionsbüro.  
 I carichi e i momenti indicati sono massimi consigliati, per ulteriori informazioni consultare il ns ufficio tecnico.*



Belt driven guided linear unit  
 Linearantrieb mit Zahnriemen und integrierter Kugelumlauführung  
 Attuatori lineari a cinghia e guida a ricircolo di sfere

**MTF 42DH-XXXX-XX**



Ordering information:

**MTF42DH-0900-F4**

**Shaft version:**

- F2: female shaft Ø12 mm with keyshaft
- F4: female shaft Ø14 mm with keyshaft
- M6L or R: male shaft Ø16 mm mount right or left
- D6: double male shaft Ø19 mm

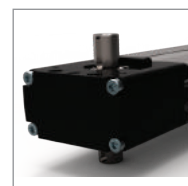
**Stroke mm**

- DH: double carriage double runner block,
- DL: double carriage single runner block

**Series and size 42x75**



Down mount M6L  
 Antriebswelle  
 unten M6L  
 Lato sotto M6L



Dual mount D6  
 Doppelwelle D6  
 Doppio albero D6



Right mount M6R  
 Antriebswelle  
 oben M6R  
 Lato destro M6R

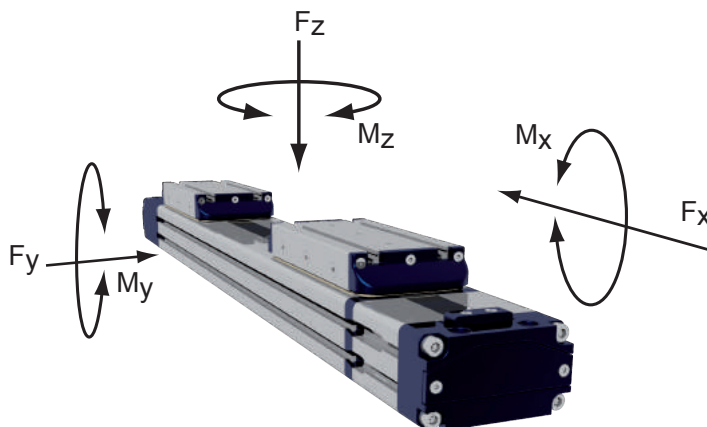
Belt driven guided linear unit  
 Linearantrieb mit Zahnriemen und integrierter Kugelumlauführung  
 Attuatori lineari a cinghia e guida a ricircolo di sfere

**MTF 42DL-XXXX-XX**

**TECHNICAL DATA - TECHNISCHE DATEN - - DATI TECNICI**

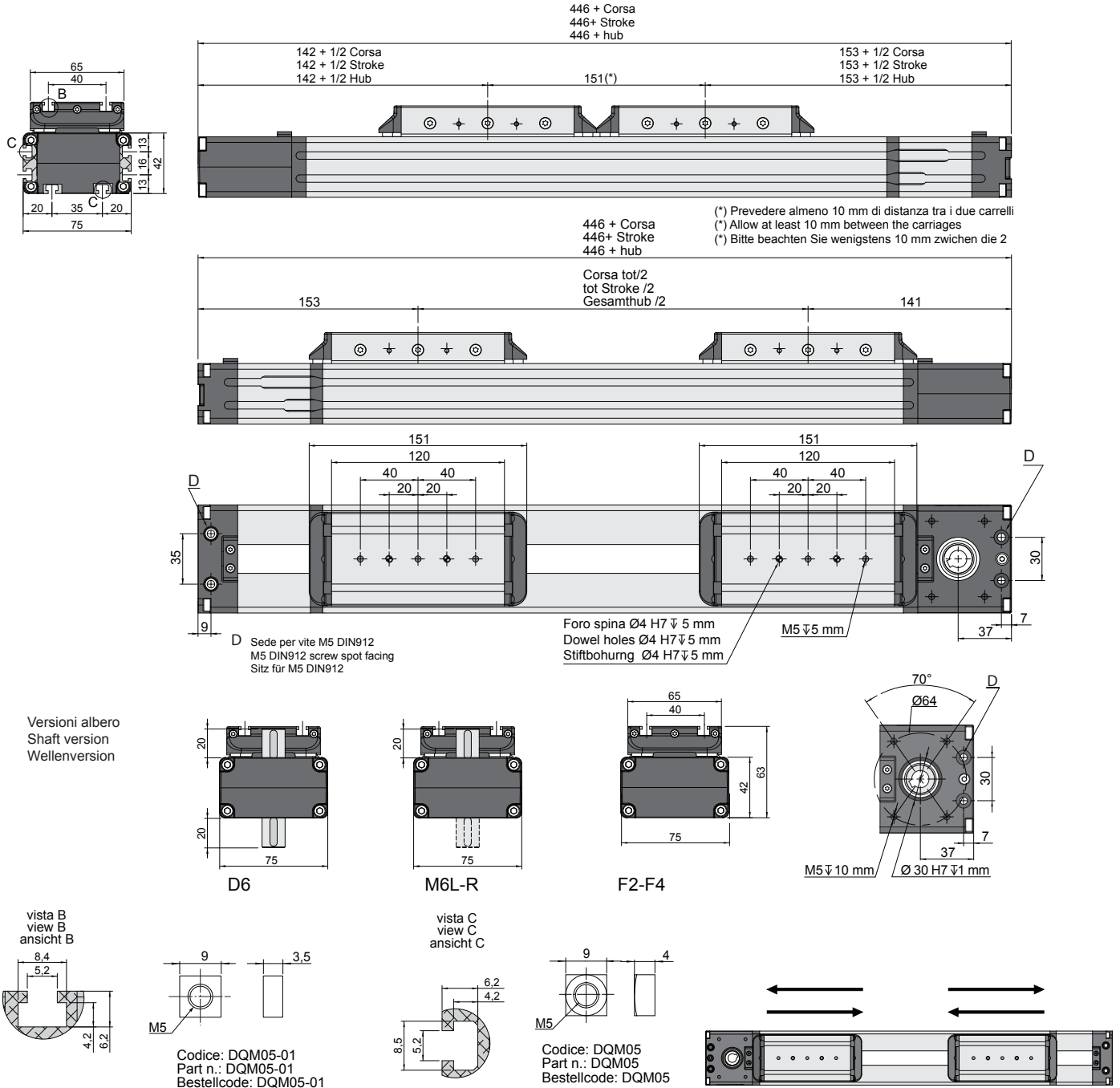
<i>Size - Baugröße - Taglia</i>			42x75
<i>Max. speed - Max. Geschwindigkeit - Velocità max</i>		m/s	3
<i>Max. stroke length - Max. Hub - Corsa max</i>		mm	6600*
<i>Min. stroke length - Min. Hub - Corsa min</i>		mm	100
<i>Pulley drive ratio - Hub pro Umdrehung - Corsa/giro puleggia</i>		mm	130
<i>Number of teeth of pulley - Zähne der Riemenscheibe - nr. denti puleggia</i>			26
<i>Teeth belt with Steel Reinforced Polyurethane ATL 5 profile clearance 0, width 12 mm</i>			
<i>ATL 5-Profil Riemen 12 mm Breite- 5mm Achsabstand</i>			
<i>Tipo di cinghia profilo ATL passo 5 larghezza 12 mm</i>			
<i>Max rpm - Max. Drehzahl der Antriebswelle - Max nr. di giri in ingresso</i>		rpm	1400
<i>Base weight - Gewicht bei 0mm Hub - Peso corsa 0 mm</i>		Kg	3,1
<i>Add for 100 mm of stroke - Gewicht bei 100mm Hub - Peso corsa 100 mm</i>		Kg	0,32
<i>Max. load* - Max. Belastung - Carico max* (each carriage - Jede last - ogni carrello)</i>	Fx	N	398
	Fy	N	635
	Fz	N	635
<i>Moments* - Max. Belastungsmoment* - Momenti max* (each carriage - Jede last - ogni carrello)</i>	Mx	Nm	9
	My	Nm	55
	Mz	Nm	55
<i>Inertia moment Aluminum profile - Flächenträgheitmoment - Momento d'inerzia profilo</i>	Ix	cm <sup>4</sup>	28
<i>Inertia moment Aluminum profile - Flächenträgheitmoment - Momento d'inerzia profilo</i>	Iy	cm <sup>4</sup>	37
<i>Repeatability - Wiederholgenauigkeit - Ripetibilità</i>		mm	± 0,05
<i>Max. radial load on input shaft - Max. axiallylasten an der Antriebswelle - Carico assiale max all'albero motore</i>		N	250
<i>No load torque - Leerlaufmoment - Coppia resistente</i>		Nm	>0,5

*\*The moments and the loads above are max. values. For any further information, please contact our technical department.  
 Die angegebenen Momente und Belastungen sind max. Werte, die nicht überschritten werden sollen. Für weitere Info, bitte wenden Sie sich an unserem Konstruktionsbüro.  
 I carichi e i momenti indicati sono massimi consigliati, per ulteriori informazioni consultare il ns ufficio tecnico.*



Belt driven guided linear unit  
 Linearantrieb mit Zahnriemen und integrierter Kugelumlauführung  
 Attuatori lineari a cinghia e guida a ricircolo di sfere

**MTF 42DL-XXXX-XX**



Ordering information:

**MTF42DL -0900 -F4**

**Shaft version:**

- F2: female shaft Ø12 mm with keyshaft
- F4: female shaft Ø14 mm with keyshaft
- M6L or R: male shaft Ø16 mm mount right or left
- D6: double male shaft Ø19 mm

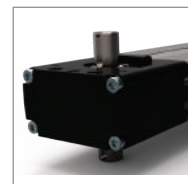
**Stroke mm**

- DH: double carriage double runner block,
- DL: double carriage single runner block

**Series and size 42x75**



Down mount M6L  
 Antriebswelle  
 unten M6L  
 Lato sotto M6L



Dual mount D6  
 Doppelwelle D6  
 Doppio albero D6



Right mount M6R  
 Antriebswelle  
 oben M6R  
 Lato destro M6R

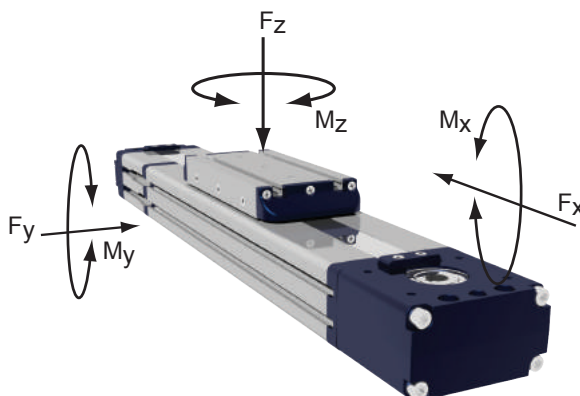
Belt driven guided linear unit  
 Linearantrieb mit Zahnriemen und integrierter Kugelumlauführung  
 Attuatori lineari a cinghia e guida a ricircolo di sfere

**MTF42H-XXXX-XX**

**TECHNICAL DATA - TECHNISCHE DATEN - - DATI TECNICI**

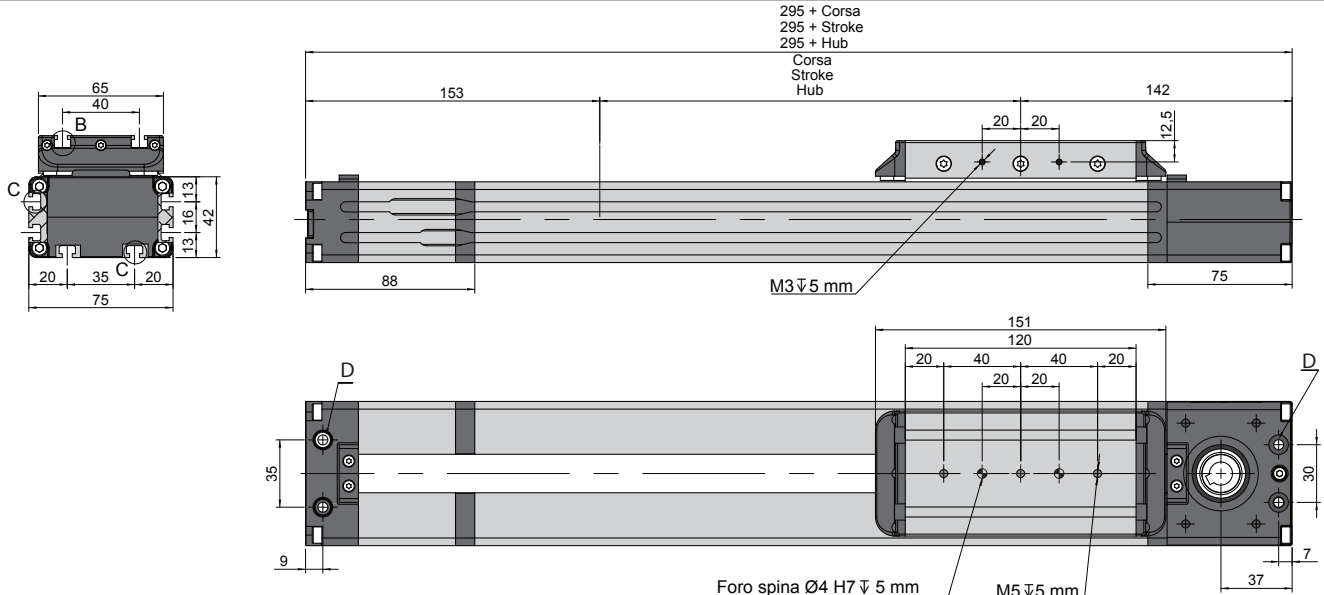
<i>Size - Baugröße - Taglia</i>			42x75
<i>Max. speed - Max. Geschwindigkeit - Velocità max</i>		m/s	3
<i>Max. stroke length - Max. Hub - Corsa max</i>		mm	5700*
<i>Min. stroke length - Min. Hub - Corsa min</i>		mm	100
<i>Pulley drive ratio - Hub pro Umdrehung - Corsa/giro puleggia</i>		mm	130
<i>Number of teeth of pulley - Zähne der Riemenscheibe - nr. denti puleggia</i>			26
<i>Teeth belt with Steel Reinforced Polyurethane ATL 5 profile clearance 0, width 12 mm</i>			
<i>ATL 5-Profil Riemen 12 mm Breite- 5mm Achsabstand</i>			
<i>Tipo di cinghia profilo ATL passo 5 larghezza 12 mm</i>			
<i>Max rpm - Max. Drehzahl der Antriebswelle - Max nr. di giri in ingresso</i>		rpm	1400
<i>Base weight - Gewicht bei 0mm Hub - Peso corsa 0 mm</i>		Kg	2,8
<i>Add for 100 mm of stroke - Gewicht bei 100mm Hub - Peso corsa 100 mm</i>		Kg	0,32
<i>Max. load* - Max. Belastung - Carico max*</i>	Fx	N	615
	Fy	N	1275
	Fz	N	1275
<i>Moments* - Max. Belastungsmoment* - Momenti max*</i>	Mx	Nm	18
	My	Nm	110
	Mz	Nm	110
<i>Inertia moment Aluminum profile - Flächenträgheitmoment - Momento d'inerzia profilo</i>	Ix	cm <sup>4</sup>	28
<i>Inertia moment Aluminum profile - Flächenträgheitmoment - Momento d'inerzia profilo</i>	Iy	cm <sup>4</sup>	37
<i>Repeatability - Wiederholgenauigkeit - Ripetibilità</i>		mm	± 0,05
<i>Max. radial load on input shaft - Max. axiallylasten an der Antriebswelle - Carico assiale max all'albero motore</i>		N	250
<i>No load torque - Leerlaufmoment - Coppia resistente</i>		Nm	>0,5

*The moments and the loads above are max. values. For any further information, please contact our technical department.  
 Die angegebenen Momente und Belastungen sind max. Werte, die nicht überschritten werden sollen. Für weitere Info, bitte wenden Sie sich an unserem Konstruktionsbüro.  
 I carichi e i momenti indicati sono massimi consigliati, per ulteriori informazioni consultare il ns ufficio tecnico.*



Belt driven guided linear unit  
 Linearantrieb mit Zahnriemen und integrierter Kugelumlauführung  
 Attuatori lineari a cinghia e guida a ricircolo di sfere

MTF42H-XXXX-XX

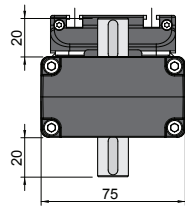


295 + Corsa  
 295 + Stroke  
 295 + Hub  
 Corsa  
 Stroke  
 Hub

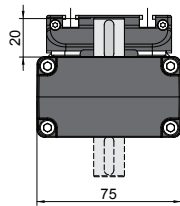
D Sede per vite M5 DIN912  
 M5 DIN912 screw spot facing  
 Sitz für M5 DIN912

Foro spina Ø4 H7 ± 0.05 mm  
 Dowel holes Ø4 H7 ± 0.05 mm  
 Stiftbohrung Ø4 H7 ± 0.05 mm

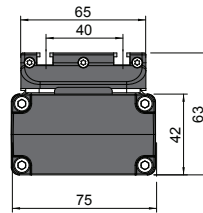
Versioni albero  
 Shaft version  
 Wellenversion



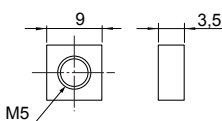
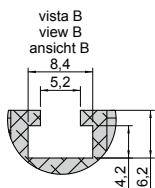
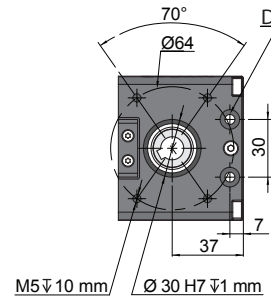
D6



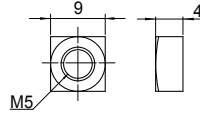
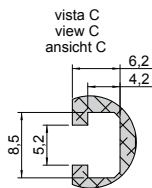
M6L-R



F2-F4



Codice: DQM05-01  
 Part n.: DQM05-01  
 Bestellcode: DQM05-01



Codice: DQM05  
 Part n.: DQM05  
 Bestellcode: DQM05

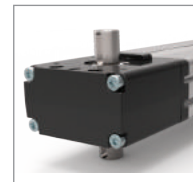
Ordering information:

**MTF42H-0900-F4**

**Shaft version:**  
 F2: female shaft Ø12 mm with keyshaft  
 F4: female shaft Ø14 mm with keyshaft  
 M6L or R: male shaft Ø16 mm mount right or left  
 D6: double male shaft Ø19 mm  
**Stroke mm**  
 H: double runner block,  
 L: single runner block  
**Series and size 42x75**



Down mount M6L  
 Antriebswelle  
 unten M6L  
 Lato sotto M6L



Dual mount D6  
 Doppelwelle D6  
 Doppio albero D6



Right mount M6R  
 Antriebswelle  
 oben M6R  
 Lato destro M6R



Belt driven guided linear unit  
 Linearantrieb mit Zahnriemen und integrierter Kugelumlauführung  
 Attuatori lineari a cinghia e guida a ricircolo di sfere

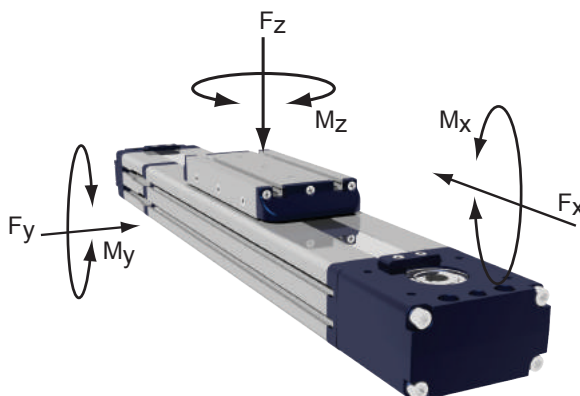
**MTF 42L-XXXX-XX**
**TECHNICAL DATA - TECHNISCHE DATEN - - DATI TECNICI**

<i>Size - Baugröße - Taglia</i>			42x75
<i>Max. speed - Max. Geschwindigkeit - Velocità max</i>		m/s	3
<i>Max. stroke length - Max. Hub - Corsa max</i>		mm	5700*
<i>Min. stroke length - Min. Hub - Corsa min</i>		mm	100
<i>Pulley drive ratio - Hub pro Umdrehung - Corsa/giro puleggia</i>		mm	130
<i>Number of teeth of pulley - Zähne der Riemenscheibe - nr. denti puleggia</i>			26
<i>Teeth belt with Steel Reinforced Polyurethane ATL 5 profile clearance 0, width 12 mm</i>			
<i>ATL 5-Profil Riemen 12 mm Breite- 5mm Achsabstand</i>			
<i>Tipo di cinghia profilo ATL passo 5 larghezza 12 mm</i>			
<i>Max rpm - Max. Drehzahl der Antriebswelle - Max nr. di giri in ingresso</i>		rpm	1400
<i>Base weight - Gewicht bei 0mm Hub - Peso corsa 0 mm</i>		Kg	2,5
<i>Add for 100 mm of stroke - Gewicht bei 100mm Hub - Peso corsa 100 mm</i>		Kg	0,32
<i>Max. load* - Max. Belastung - Carico max*</i>	Fx	N	615
	Fy	N	640
	Fz	N	640
<i>Moments* - Max. Belastungsmoment* - Momenti max*</i>	Mx	Nm	9
	My	Nm	55
	Mz	Nm	55
<i>Inertia moment Aluminum profile - Flächenträgheitmoment - Momento d'inerzia profilo</i>	Ix	cm <sup>4</sup>	28
<i>Inertia moment Aluminum profile - Flächenträgheitmoment - Momento d'inerzia profilo</i>	Iy	cm <sup>4</sup>	37
<i>Repeatability - Wiederholgenauigkeit - Ripetibilità</i>		mm	± 0,05
<i>Max. radial load on input shaft - Max. axillasten an der Antriebswelle - Carico assiale max all'albero motore</i>		N	250
<i>No load torque - Leerlaufmoment - Coppia resistente</i>		Nm	>0,35

*The moments and the loads above are max. values. For any further information, please contact our technical department.*

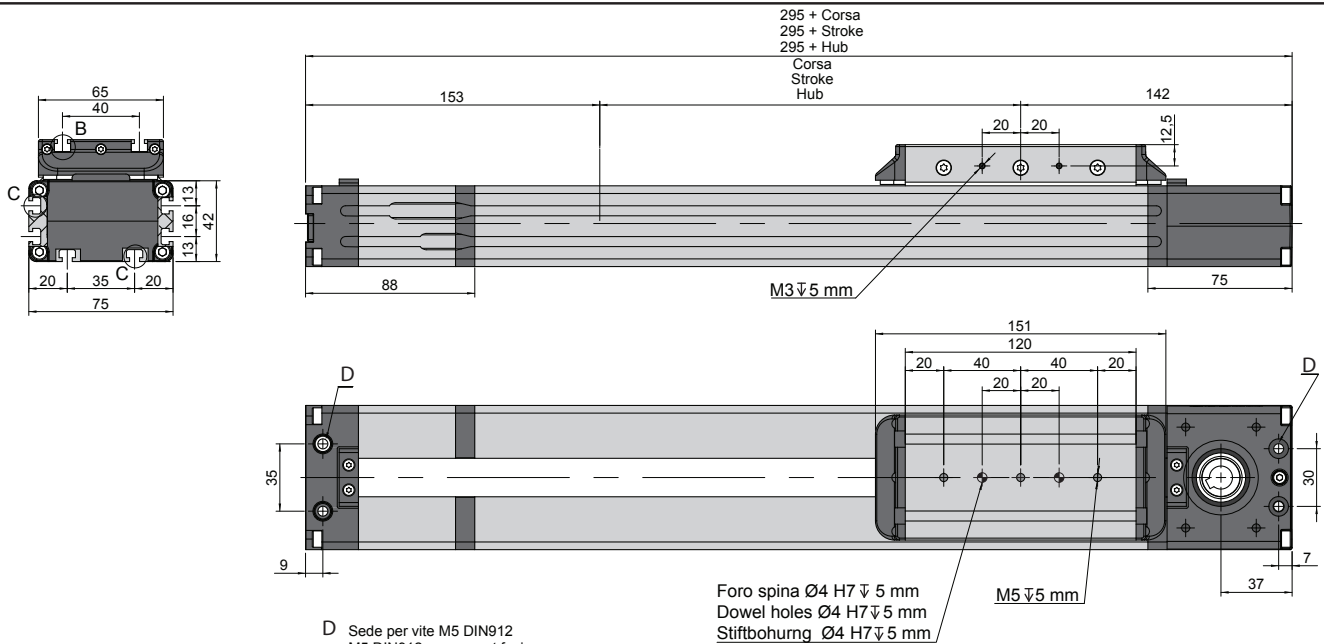
*Die angegebenen Momente und Belastungen sind max. Werte, die nicht überschritten werden sollen. Für weitere Info, bitte wenden Sie sich an unserem Konstruktionsbüro.*

*I carichi e i momenti indicati sono massimi consigliati, per ulteriori informazioni consultare il ns ufficio tecnico.*

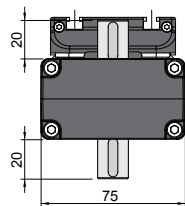


Belt driven guided linear unit  
 Linearantrieb mit Zahnriemen und integrierter Kugelumlauführung  
 Attuatori lineari a cinghia e guida a ricircolo di sfere

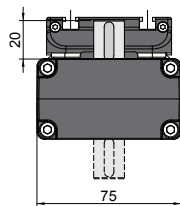
**MTF 42L-XXXX-XX**



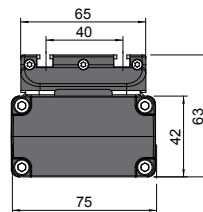
Versioni albero  
 Shaft version  
 Wellenversion



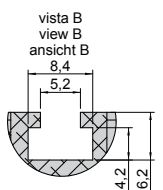
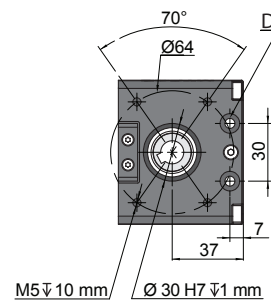
**D6**



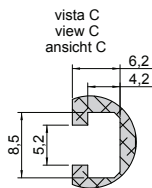
**M6L-R**



**F2-F4**



Codice: DQM05-01  
 Part n.: DQM05-01  
 Bestellcode: DQM05-01



Codice: DQM05  
 Part n.: DQM05  
 Bestellcode: DQM05

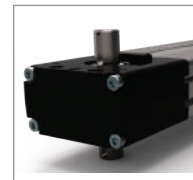
Ordering information:

**MTF42H-0900-F4**

- Shaft version:**
  - F2: female shaft Ø12 mm with keyshaft
  - F4: female shaft Ø14 mm with keyshaft
  - M6L or R: male shaft Ø16 mm mount right or left
  - D6: double male shaft Ø19 mm
- Stroke mm**
- H:** double runner block,
- L:** single runner block
- Series and size 42x75**



Down mount M6L  
 Antriebswelle  
 unten M6L  
 Lato sotto M6L



Dual mount D6  
 Doppelwelle D6  
 Doppio albero D6



Right mount M6R  
 Antriebswelle  
 oben M6R  
 Lato destro M6R

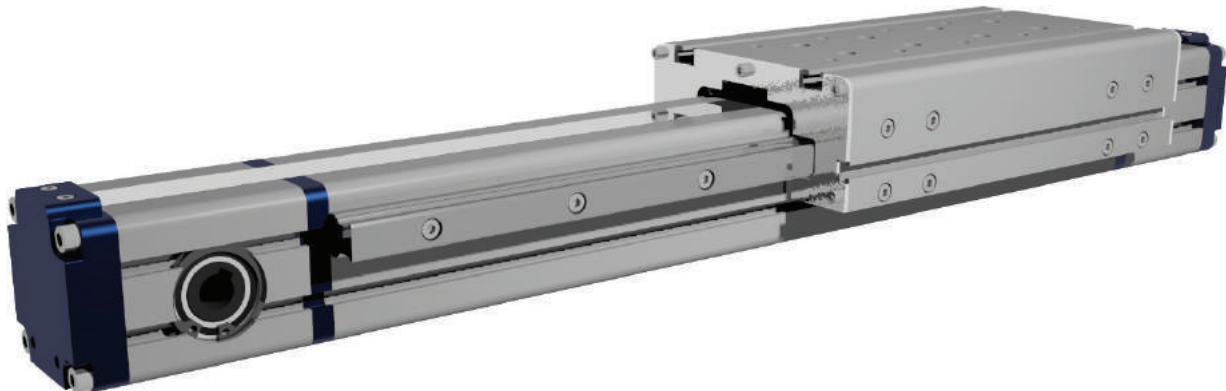
Belt driven guided linear unit  
 Linearantrieb mit Zahnriemen und integrierter Kugelumlauführung  
 Attuatori lineari a cinghia e guide a ricircolo di sfere

**MTS 55**

**TECHNICAL DATA - TECHNISCHE DATEN - - DATI TECNICI**

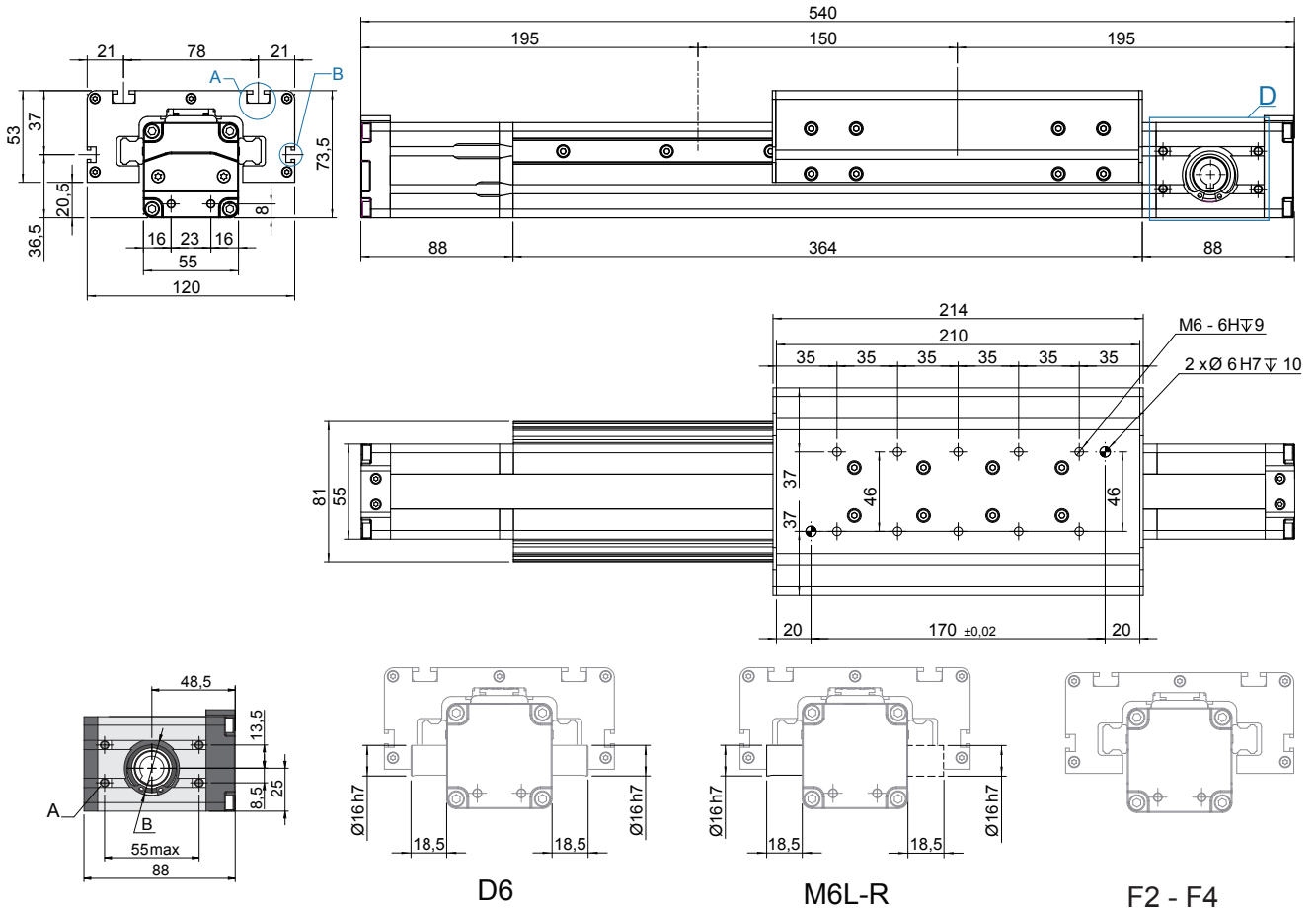
Size - Baugröße - Taglia			55x55
Max. speed - Max. Geschwindigkeit - Velocità max		m/s	3
Max. stroke length - Max. Hub - Corsa max		mm	6000
Min. stroke length - Min. Hub - Corsa min		mm	100
Pulley drive ratio - Hub pro Umdrehung - Corsa/giro puleggia		mm	120
Number of teeth of pulley - Zähne der Riemenscheibe - nr. denti puleggia			24
Teeth belt with Steel Reinforced Polyurethane ATL 5 profile clearance 0, width 16 mm ATL-Profil Riemen 16 mm Breite- 5mm Achsabstand Tipo di cinghia profilo ATL passo 5 larghezza 16 mm			
Max rpm - Max. Drehzahl der Antriebswelle - Max nr. di giri in ingresso		g/min	1500
Base weight - Gewicht bei 0mm Hub - Peso corsa 0 mm		Kg	3,5
Add for 100 mm of stroke - Gewicht bei 100mm Hub - Peso corsa 100 mm		Kg	0,65
Max. load* - Max. Belastung - Carico max*	Fx	N	820
	Fy	N	10800
	Fz	N	10800
Moments* - Max. Belastungsmoment* - Momenti max*	Mx	Nm	395
	My	Nm	480
	Mz	Nm	480
Inertia moment Aluminum profile - Flächenträgheitsmoment - Momento d'inerzia profilo	Ix	cm <sup>4</sup>	36
Inertia moment Aluminum profile - Flächenträgheitsmoment - Momento d'inerzia profilo	Iy	cm <sup>4</sup>	46
Repeatability - Wiederholgenauigkeit - Ripetibilità		mm	± 0,05
Max. radial load on input shaft - Max. axiale Lasten an der Antriebswelle - Carico assiale max all'albero motore		N	200
No load torque - Leerlaufmoment - Coppia resistente		Nm	0.9

The moments and the loads above are max. values. For any further information, please contact our technical department.  
 Die angegebenen Momente und Belastungen sind max. Werte, die nicht überschritten werden sollen. Für weitere Info, bitte wenden Sie sich an unserem Konstruktionsbüro.  
 I carichi e i momenti indicati sono massimi consigliati, per ulteriori informazioni consultare il ns ufficio tecnico.



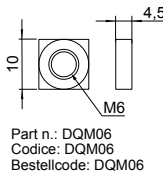
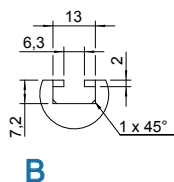
Belt driven guided linear unit  
 Linearantrieb mit Zahnriemen und integrierter Kugelumlauführung  
 Attuatori lineari a cinghia e guide a ricircolo di sfere

**MTS 55**

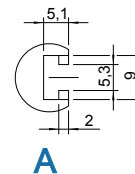


**A** Dadi quadri M5 DIN557 già inclusi  
 Square nut M5 DIN557 already included  
 Vierkantmutter M5 DIN557 im Lieferumfang enthalten

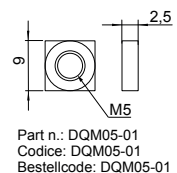
**B** Per tutte le versioni d'albero Ø32 H7 prof 1,5 mm  
 For all shaft version Ø32 H7 deep 1,5 mm  
 Für alle Wellen-Versionen Ø32 H7 1,5 mm tief



Part n.: DQM06  
 Codice: DQM06  
 Bestellcode: DQM06



**A**



Part n.: DQM05-01  
 Codice: DQM05-01  
 Bestellcode: DQM05-01

Ordering information:

**MTS55-0900-F4**

**Shaft version:**  
 F2: female shaft Ø12 mm with keyshaft  
 F4: female shaft Ø14 mm with keyshaft  
 M6L or R: male shaft Ø16 mm mount right or left  
 D6: double male shaft Ø16 mm

**Stroke mm**

**Series and size 55x55**



Left mount M6L  
 Antriebswelle links M6L  
 Lato sinistro M6L



Dual mount D6  
 Doppelwelle D6  
 Doppio albero D6



Right mount M6R  
 Antriebswelle rechts M6R  
 Lato destro M6R

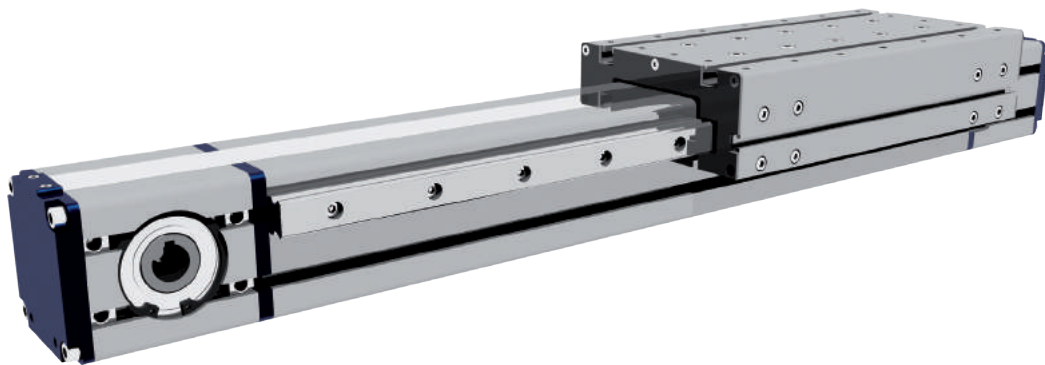
Belt driven guided linear unit  
 Linearantrieb mit Zahnriemen und integrierter Kugelumlauführung  
 Attuatori lineari a cinghia e guide a ricircolo di sfere

**MTS 80**

**TECHNICAL DATA - TECHNISCHE DATEN - - DATI TECNICI**

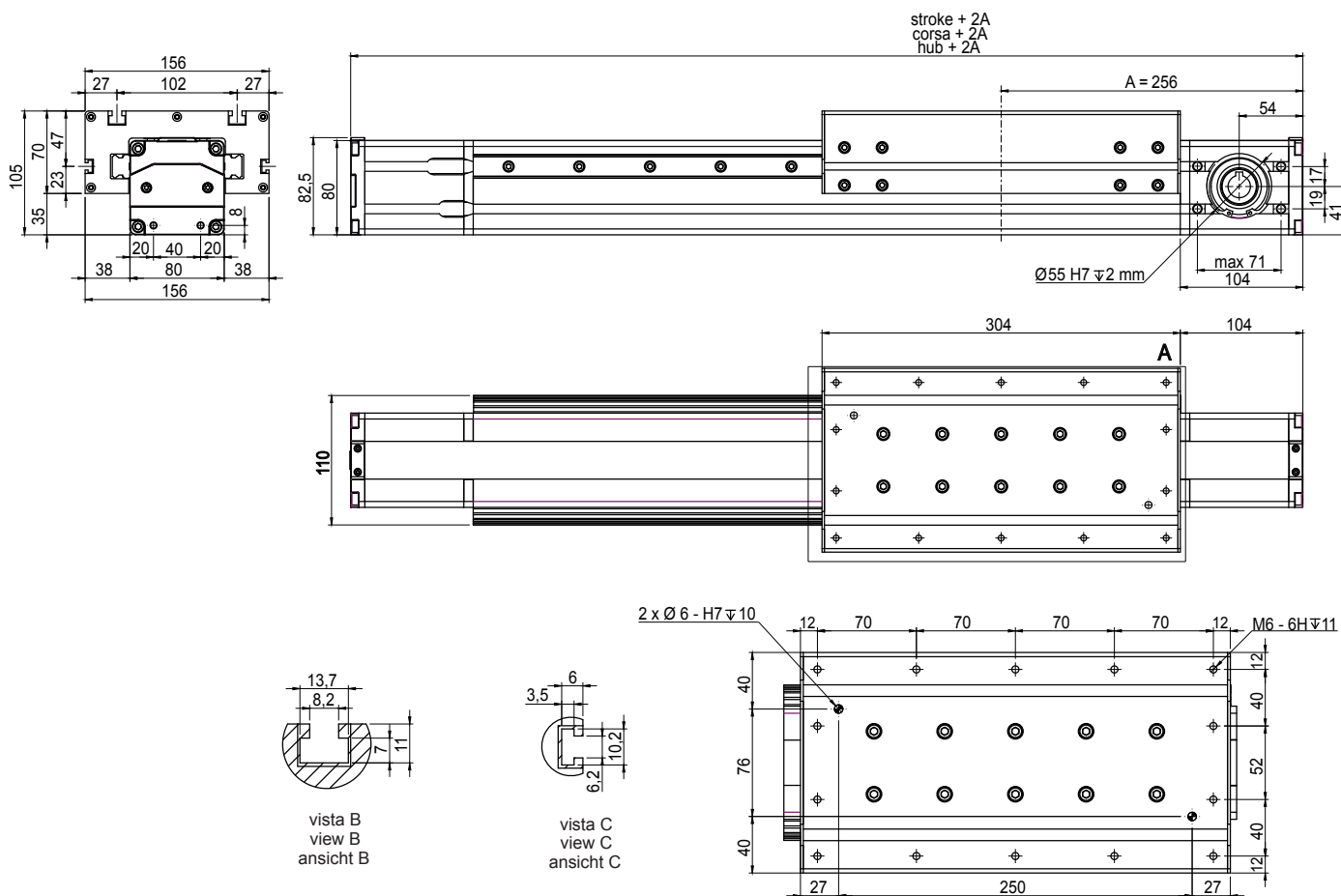
<i>Size - Baugröße - Taglia</i>			80x80
<i>Max. speed - Max. Geschwindigkeit - Velocità max</i>		m/s	3
<i>Max. stroke length - Max. Hub - Corsa max</i>		mm	6600*
<i>Min. stroke length - Min. Hub - Corsa min</i>		mm	100
<i>Pulley drive ratio - Hub pro Umdrehung - Corsa/giro puleggia</i>		mm	160
<i>Number of teeth of pulley - Zähne der Riemenscheibe - nr. denti puleggia</i>			32
<i>Teeth belt with Steel Reinforced Polyurethane ATL 5 profile clearance 0, width 25 mm</i>			
<i>ATL 5-Profil Riemen 25 mm Breite- 5mm Achsabstand</i>			
<i>Tipo di cinghia profilo ATL passo 5 larghezza 25 mm</i>			
<i>Max rpm - Max. Drehzahl der Antriebswelle - Max nr. di giri in ingresso</i>		rpm	1150
<i>Base weight - Gewicht bei 0mm Hub - Peso corsa 0 mm</i>		Kg	8,8
<i>Add for 100 mm of stroke - Gewicht bei 100mm Hub - Peso corsa 100 mm</i>		Kg	1,1
Trust force	Fx	N	1950
<i>Max. load* - Max. Belastung - Carico max*</i>	Fy	N	20.200
	Fz	N	20.200
	Mx	Nm	620
<i>Moments* - Max. Belastungsmoment* - Momenti max*</i>	My	Nm	730
	Mz	Nm	730
	<i>Inertia moment Aluminum profile - Flächenträgheitmoment - Momento d'inerzia profilo</i>	Ix	cm <sup>4</sup>
<i>Inertia moment Aluminum profile - Flächenträgheitmoment - Momento d'inerzia profilo</i>	Iy	cm <sup>4</sup>	226
<i>Repeatability - Wiederholgenauigkeit - Ripetibilità</i>		mm	± 0,05
<i>Max. radial load on input shaft - Max. axillasten an der Antriebswelle - Carico assiale max all'albero motore</i>		N	300
<i>No load torque - Leerlaufmoment - Coppia resistente</i>		Nm	1,2

*The moments and the loads above are max. values. For any further information, please contact our technical department.  
 Die angegebenen Momente und Belastungen sind max. Werte, die nicht überschritten werden sollen. Für weitere Info, bitte wenden Sie sich an unserem Konstruktionsbüro.  
 I carichi e i momenti indicati sono massimi consigliati, per ulteriori informazioni consultare il ns ufficio tecnico.*



Belt driven guided linear unit  
 Linearantrieb mit Zahnriemen und integrierter Kugelumlauführung  
 Attuatori lineari a cinghia e guide a ricircolo di sfere

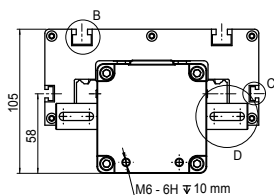
**MTS 80**



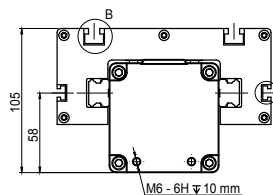
stroke + 2A  
 corsa + 2A  
 hub + 2A

Ø55 H7 2 mm

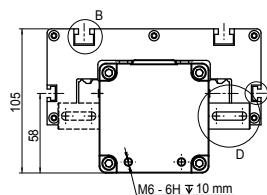
vista A  
 view A  
 ansicht A



**D9**  
 D9 Albero maschio doppio Ø19  
 Double male shaft Ø19  
 Doppelte Antriebswelle Ø19



**F6-F9**  
 F6 Albero femmina Ø16  
 Female shaft Ø16  
 Holzwelle Ø16  
 F9 Albero femmina Ø19  
 Female shaft Ø19  
 Holzwelle Ø19



**M9L-R**  
 M9L Albero maschio singolo Ø19 sinistro  
 Male single shaft Ø19 left  
 Links Antriebswelle Ø19  
 M9R Albero maschio singolo Ø19 destro  
 Male single shaft Ø19 right  
 Rechts Antriebswelle Ø19

**Example:**

ordering information: **MTS80 0500 M9 L**  
 Shaft position: from the motor side L=left - R=right  
 Single male shaft Ø19 mm  
 Total stroke in mm  
 Series MTS80 size 80 x 80 double external rail



Belt driven guided linear unit  
 Linearantrieb mit Zahnriemen und integrierter Kugelumlauführung  
 Attuatori lineari a cinghia e guida a ricircolo di sfere

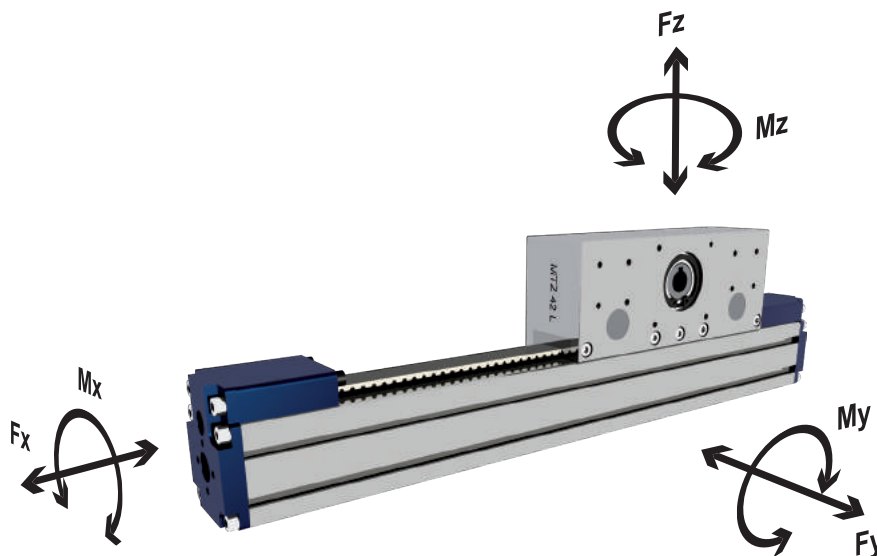
# MTZ42L

## TECHNICAL DATA - TECHNISCHE DATEN - - DATI TECNICI

Size - Baugröße - Taglia			42x42
Max. speed - Max. Geschwindigkeit - Velocità max		m/s	1
Max. stroke length - Max. Hub - Corsa max		mm	1000
Min. stroke length - Min. Hub - Corsa min		mm	100
Pulley drive ratio - Hub pro Umdrehung - Corsa/giro puleggia		mm	120
Number of teeth of pulley - Zähne der Riemenscheibe - nr. denti puleggia			24
Teeth belt with Steel Reinforced Polyurethane <b>ATL 5</b> profile clearance 0, width 16 mm <b>ATL</b> -Profil Riemen 16mm Breite- 5mm Achsabstand Tipo di cinghia profilo <b>ATL</b> passo 5 larghezza 16 mm			
Max rpm - Max. Drehzahl der Antriebswelle - Max nr. di giri in ingresso		g/min	500
Base weight - Gewicht bei 0mm Hub - Peso corsa 0 mm		Kg	2
Add for 100 mm of stroke - Gewicht bei 100mm Hub - Peso corsa 100 mm		Kg	0,6
Max. load* - Max. Belastung - Carico max*	Fx	N	600
	Fy	N	1560
	Fz	N	1560
Moments* - Max. Belastungsmoment* - Momenti max*	Mx	Nm	20
	My	Nm	55
	Mz	Nm	55
Repeatability - Wiederholgenauigkeit - Ripetibilità		mm	± 0,05
Max. radial load on input shaft - Max. axiale Lasten an der Antriebswelle - Carico assiale max all'albero motore		N	220
Max motor torque - Coppia max motore all'albero attuatore		Nm	12
No load torque - Leerlaufmoment - Coppia resistente		Nm	0,3
Max Motor torque - Coppia max motore - Max. Drehmoment		Nm	13

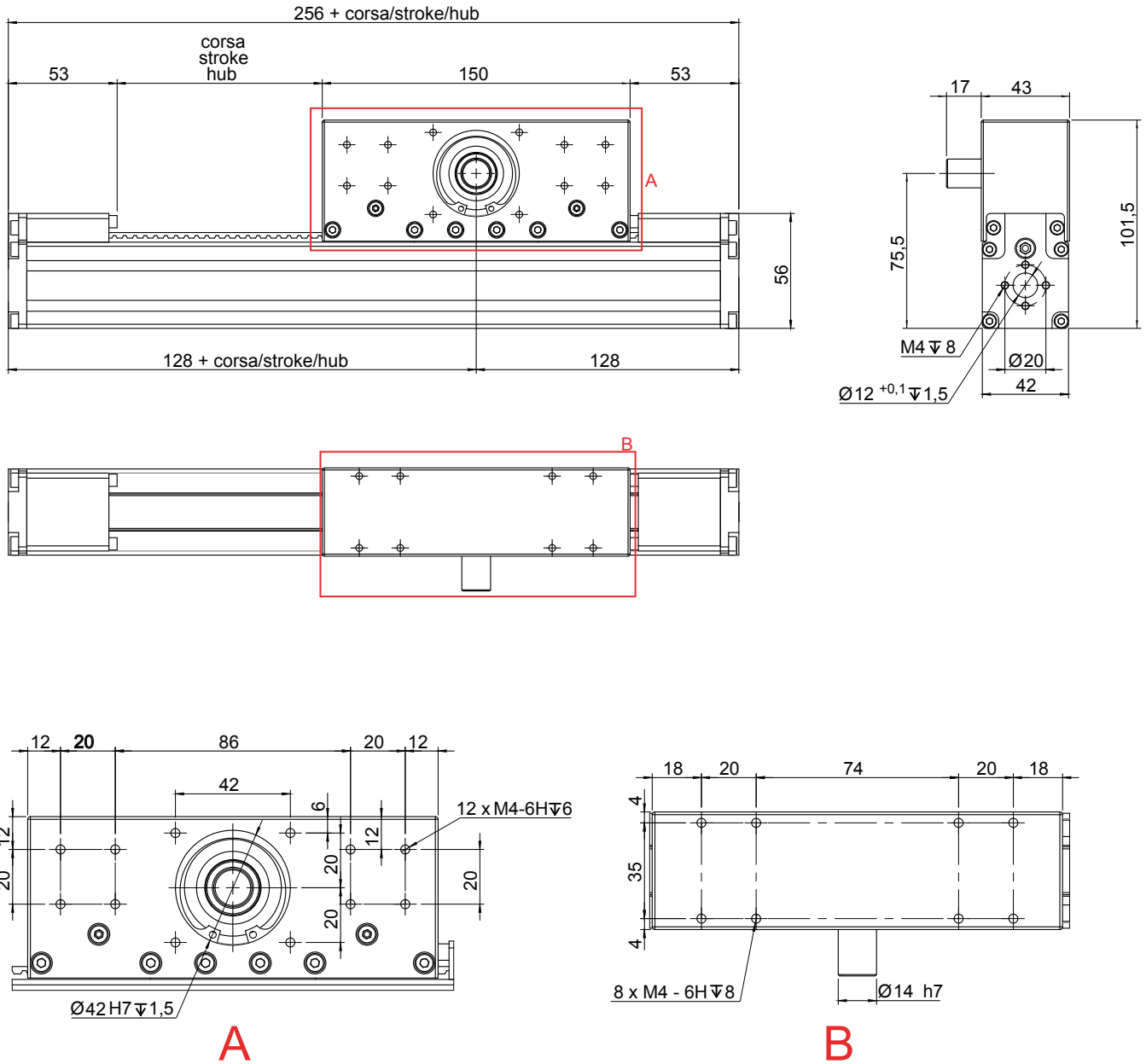
The moments and the loads above are max. values. For any further information, please contact our technical department.  
 Die angegebenen Momente und Belastungen sind max. Werte, die nicht überschritten werden sollen. Für weitere Info, bitte wenden Sie sich an unserem Konstruktionsbüro.

I carichi e i momenti indicati sono massimi consigliati, per ulteriori informazioni consultare il ns ufficio tecnico.



Belt driven guided linear unit  
 Linearantrieb mit Zahnriemen und integrierter Kugelumlaufführung  
 Attuatori lineari a cinghia e guida a ricircolo di sfere

**MTZ42L**



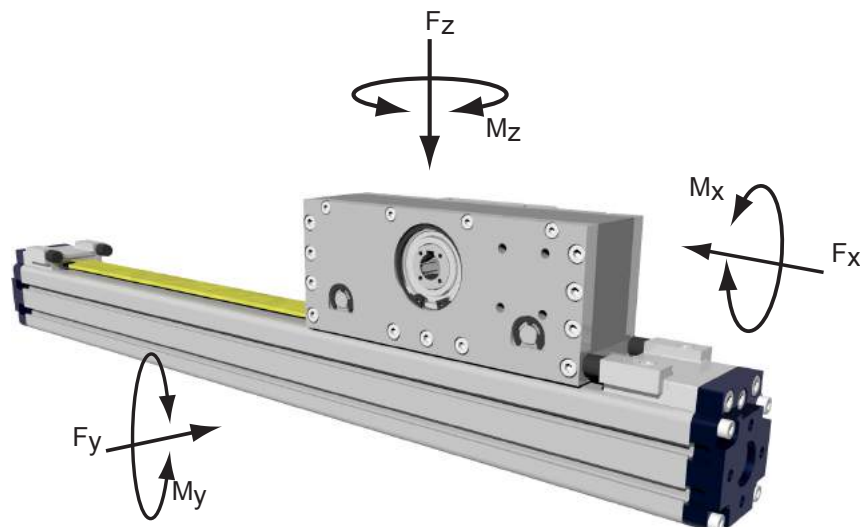
Belt driven guided linear unit  
 Linearantrieb mit Zahnriemen und integrierter Kugelumlaufführung  
 Attuatori lineari a cinghia e guida a ricircolo di sfere

**MTZ 55 L**

**TECHNICAL DATA - TECHNISCHE DATEN - - DATI TECNICI**

Size - Baugröße - Taglia			55x55
Max. speed - Max. Geschwindigkeit - Velocità max	m/s		1
Max. stroke length - Max. Hub - Corsa max	mm		1000
Min. stroke length - Min. Hub - Corsa min	mm		100
Pulley drive ratio - Hub pro Umdrehung - Corsa/giro puleggia	mm		130
Number of teeth of pulley - Zähne der Riemenscheibe - nr. denti puleggia			26
Teeth belt with Steel Reinforced Polyurethane AT 5 profile clearance 0, width 25 mm AT-Profil Riemen 25 mm Breite- 5mm Achsabstand Tipo di cinghia profilo AT passo 5 larghezza 25 mm			
Max rpm - Max. Drehzahl der Antriebswelle - Max nr. di giri in ingresso	g/min		460
Base weight - Gewicht bei 0mm Hub - Peso corsa 0 mm	Kg		3,9
Add for 100 mm of stroke - Gewicht bei 100mm Hub - Peso corsa 100 mm	Kg		0,3
Max. load* - Max. Belastung - Carico max*	Fx	N	800
	Fy	N	3300
	Fz	N	3300
Moments* - Max. Belastungsmoment* - Momenti max*	Mx	Nm	40
	My	Nm	220
	Mz	Nm	220
Inertia moment Aluminum profile - Flächenträgheitsmoment - Momento d'inerzia profilo	Ix	cm <sup>4</sup>	36
Inertia moment Aluminum profile - Flächenträgheitsmoment - Momento d'inerzia profilo	Iy	cm <sup>4</sup>	46
Repeatability - Wiederholgenauigkeit - Ripetibilità	mm		± 0,05
Max. radial load on input shaft - Max. axiale Lasten an der Antriebswelle - Carico assiale max all'albero motore	N		200
No load torque - Leerlaufmoment - Coppia resistente	Nm		1

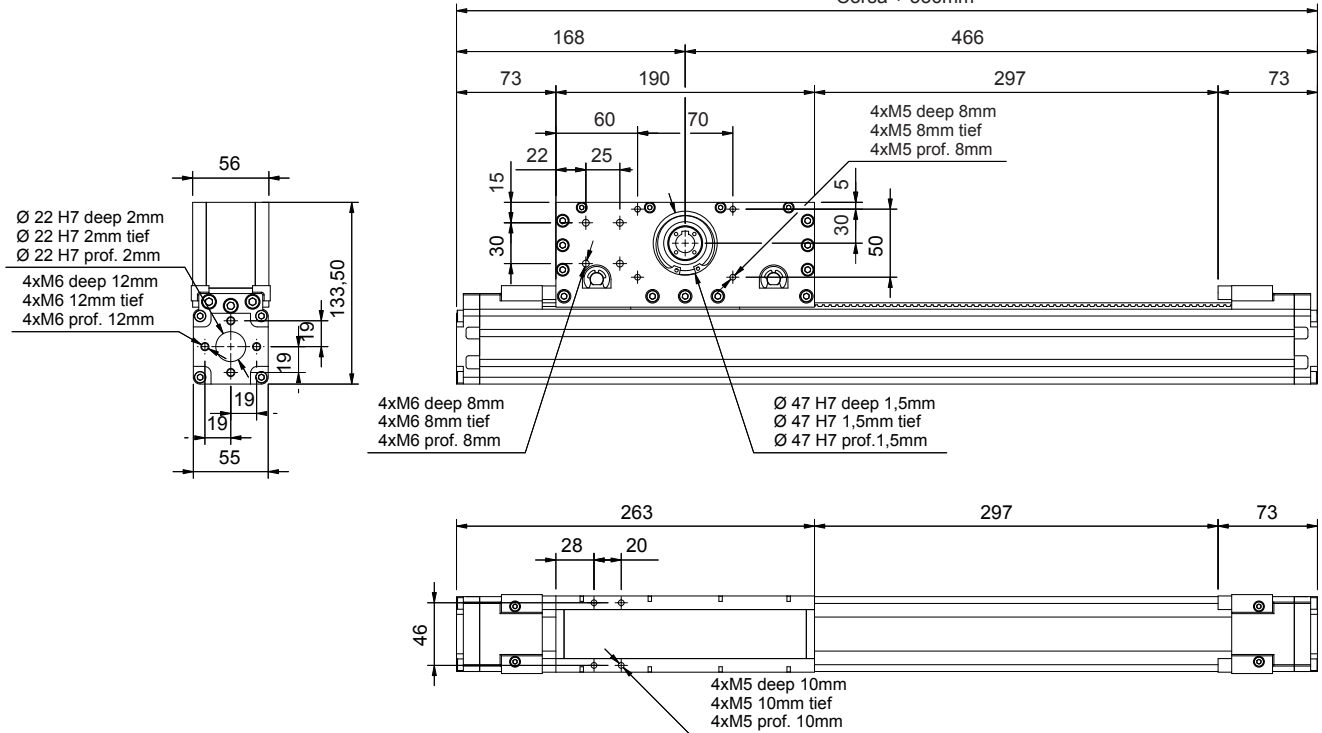
The moments and the loads above are max. values. For any further information, please contact our technical department.  
 Die angegebenen Momente und Belastungen sind max. Werte, die nicht überschritten werden sollen. Für weitere Info, bitte wenden Sie sich an unserem Konstruktionsbüro.  
 I carichi e i momenti indicati sono massimi consigliati, per ulteriori informazioni consultare il ns ufficio tecnico.



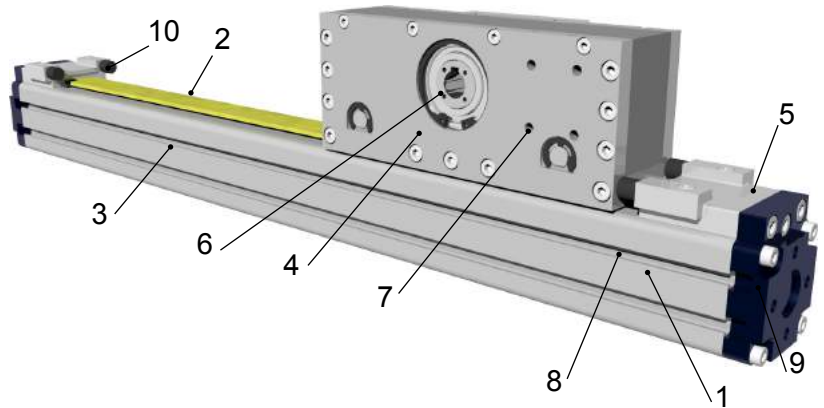
*Belt driven guided linear unit  
 Linearantrieb mit Zahnriemen und integrierter Kugelumlauführung  
 Attuatori lineari a cinghia e guida a ricircolo di sfere*

**MTZ 55 L**

Stroke + 336mm  
 Hub + 336m  
 Corsa + 336mm



1. Body in extruded aluminium alloy 6060 anodized
2. Teeth belt with Steel Reinforced Polyurethane AT profile clearance 0
3. Ball rail system inside
4. Carriage in aluminium anodized
5. Belt Tensioning System
6. Motor Mount Assembly
7. Holes for actuator fixing
8. T Slot for proximity switch
9. End caps with thread holes and spigot
10. Rubber buffer



1. **Selbsttragenden Profil aus eloxierter 6060 Aluminiumlegierung**
2. **Stahlverstärkten Polyurethan-Riemen mit AT Zahnprofil**
3. **Innere Kugelumlauführung**
4. **Schlitten aus eloxierter 6060 Aluminiumlegierung**
5. **Integriertes Zahnriemenstraffensystem**
6. **Antriebswelle verfügbar**
7. **Nuten für die Anbindung des Antriebe**
8. **Bohrung für die Befestigung des Sensors**
9. **Zylinderköpfe mit Gewindebohrungen und Zentrierbohrungen**
10. **Puffer aus gummi**

1. profilo autoportante in alluminio lega 6060 anodizzato
2. cinghia in poliuretano rinforzata con cavi in acciaio profilo AT
3. guida interna profilata a ricircolo di sfere
4. carrello con cave a T per fissaggio
5. sistema di tensionamento cinghia integrato
6. attacco motore
7. Fori per attacco attuatore
8. cave per attacco sensori di posizione
9. Testate con fori filettati e foro di centraggio
10. Paracolpi in gomma

Belt driven guided linear unit  
 Linearantrieb mit Zahnriemen und integrierter Kugelumlauführung  
 Attuatori lineari a cinghia e guida a ricircolo di sfere

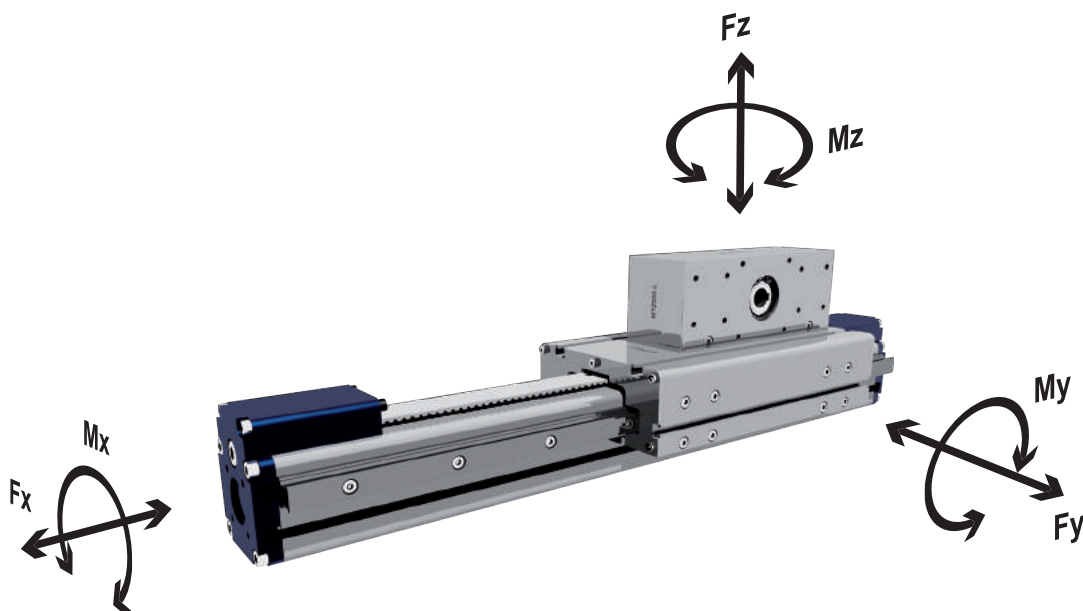
# MTZ55S

## TECHNICAL DATA - TECHNISCHE DATEN -- DATI TECNICI

Size - Baugröße - Taglia			55x55
Max. speed - Max. Geschwindigkeit - Velocità max		m/s	1
Max. stroke length - Max. Hub - Corsa max		mm	1500
Min. stroke length - Min. Hub - Corsa min		mm	100
Pulley drive ratio - Hub pro Umdrehung - Corsa/giro puleggia		mm	130
Number of teeth of pulley - Zähne der Riemenscheibe - nr. denti puleggia			26
Teeth belt with Steel Reinforced Polyurethane ATL 5 profile clearance 0, width 25 mm ATL-Profil Riemen 25 mm Breite- 5mm Achsabstand Tipo di cinghia profilo ATL passo 5 larghezza 25 mm			
Max rpm - Max. Drehzahl der Antriebswelle - Max nr. di giri in ingresso		g/min	460
Base weight - Gewicht bei 0mm Hub - Peso corsa 0 mm		Kg	5,1
Add for 100 mm of stroke - Gewicht bei 100mm Hub - Peso corsa 100 mm		Kg	0,6
Max. load* - Max. Belastung - Carico max*	Fx	N	1150
	Fy	N	7800
	Fz	N	7800
Moments* - Max. Belastungsmoment* - Momenti max*	Mx	Nm	395
	My	Nm	480
	Mz	Nm	480
Inertia moment Aluminum profile - Flächenträgheitmoment - Momento d'inerzia profilo	Ix	cm <sup>4</sup>	36
Inertia moment Aluminum profile - Flächenträgheitmoment - Momento d'inerzia profilo	Iy	cm <sup>4</sup>	46
Repeatability - Wiederholgenauigkeit - Ripetibilità		mm	± 0,05
Max. radial load on input shaft - Max. axiale Lasten an der Antriebswelle - Carico assiale max all'albero motore		N	200
No load torque - Leerlaufmoment - Coppia resistente		Nm	1

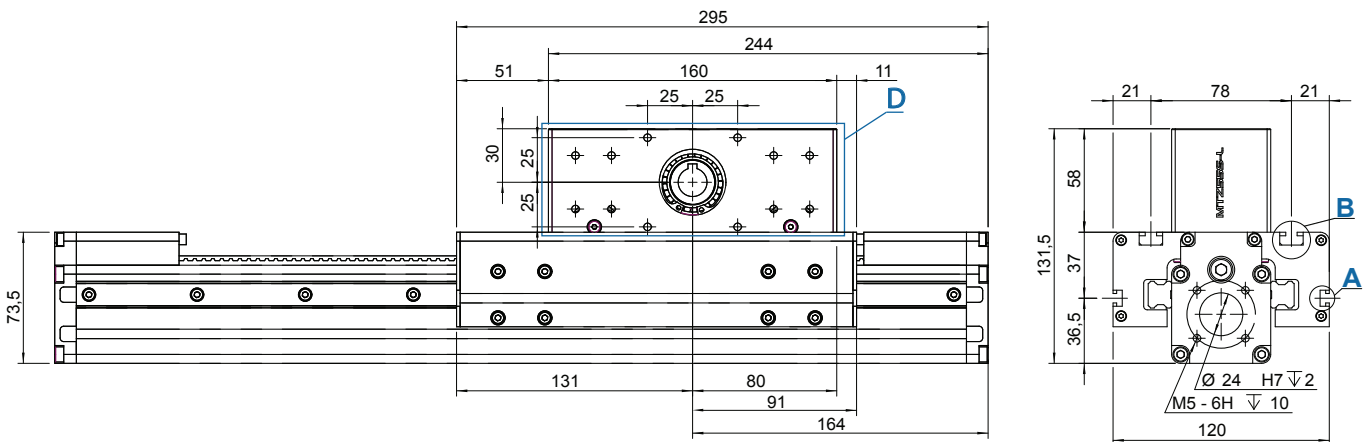
The moments and the loads above are max. values. For any further information, please contact our technical department.  
 Die angegebenen Momente und Belastungen sind max. Werte, die nicht überschritten werden sollen. Für weitere Info, bitte wenden Sie sich an unserem Konstruktionsbüro.

I carichi e i momenti indicati sono massimi consigliati, per ulteriori informazioni consultare il ns ufficio tecnico.

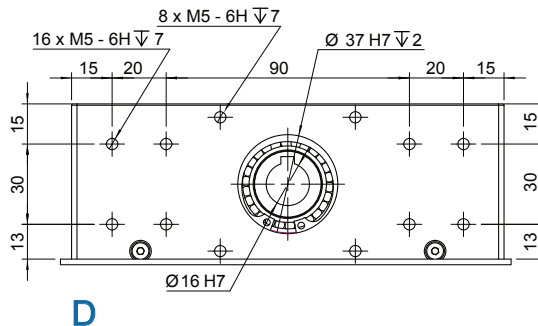
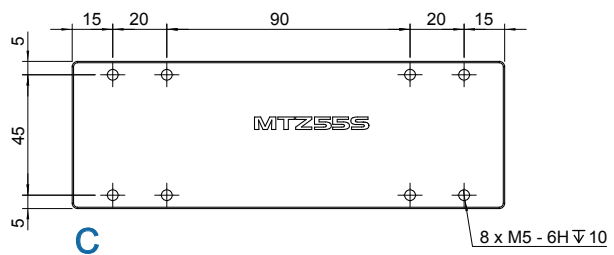
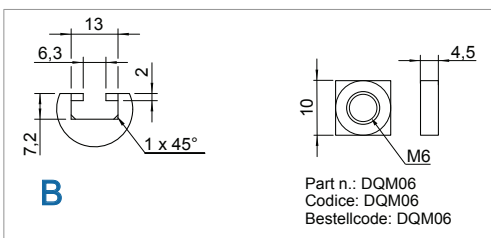
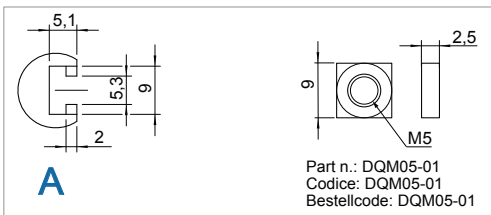
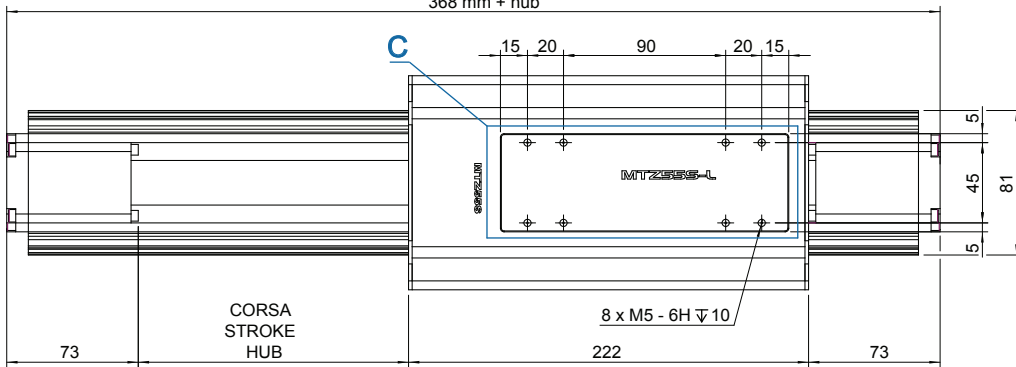


Belt driven guided linear unit  
 Linearantrieb mit Zahnriemen und integrierter Kugelumlaufführung  
 Attuatori lineari a cinghia e guida a ricircolo di sfere

**MTZ555**



368 mm + corsa  
 368 mm + stroke  
 368 mm + hub





Belt driven guided linear unit  
 Linearantrieb mit Zahnriemen und integrierter Kugelumlauführung  
 Attuatori lineari a cinghia e guida a ricircolo di sfere

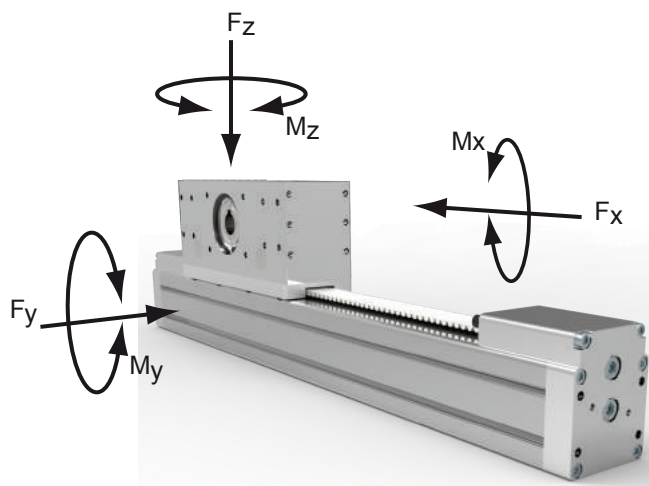
**MTZ80L-XXXX-XX**
**TECHNICAL DATA - TECHNISCHE DATEN - - DATI TECNICI**

<i>Size - Baugröße - Taglia</i>			80x80
<i>Max. speed - Max. Geschwindigkeit - Velocità max</i>		m/s	3
<i>Max. stroke length - Max. Hub - Corsa max</i>		mm	1500*
<i>Min. stroke length - Min. Hub - Corsa min</i>		mm	100
<i>Pulley drive ratio - Hub pro Umdrehung - Corsa/giro puleggia</i>		mm	160
<i>Number of teeth of pulley - Zähne der Riemenscheibe - nr. denti puleggia</i>			24
<i>Teeth belt with Steel Reinforced Polyurethane HTD8M profile clearance 0, width 32 mm</i>			
<i>HTD8M-Profil Riemen 32 mm Breite- 8 mm Achsabstand</i>			
<i>Tipo di cinghia profilo HTD8M passo 8 larghezza 32 mm</i>			
<i>Max rpm - Max. Drehzahl der Antriebswelle - Max nr. di giri in ingresso</i>		rpm	900
<i>Base weight - Gewicht bei 0mm Hub - Peso corsa 0 mm</i>		Kg	12
<i>Add for 100 mm of stroke - Gewicht bei 100mm Hub - Peso corsa 100 mm</i>		Kg	0,9
<i>Max. load* - Max. Belastung - Carico max*</i>	Fx	N	2500
	Fy	N	4500
	Fz	N	4500
<i>Moments* - Max. Belastungsmoment* - Momenti max*</i>	Mx	Nm	80
	My	Nm	450
	Mz	Nm	450
<i>Inertia moment Aluminum profile - Flächenträgheitsmoment - Momento d'inerzia profilo</i>	Ix	cm <sup>4</sup>	183
<i>Inertia moment Aluminum profile - Flächenträgheitsmoment - Momento d'inerzia profilo</i>	Iy	cm <sup>4</sup>	226
<i>Repeatability - Wiederholgenauigkeit - Ripetibilità</i>		mm	± 0,05
<i>Max. radial load on input shaft - Max. axillasten an der Antriebswelle - Carico assiale max all'albero motore</i>		N	300
<i>No load torque - Leerlaufmoment - Coppia resistente</i>		Nm	0,8

*The moments and the loads above are max. values. For any further information, please contact our technical department.*

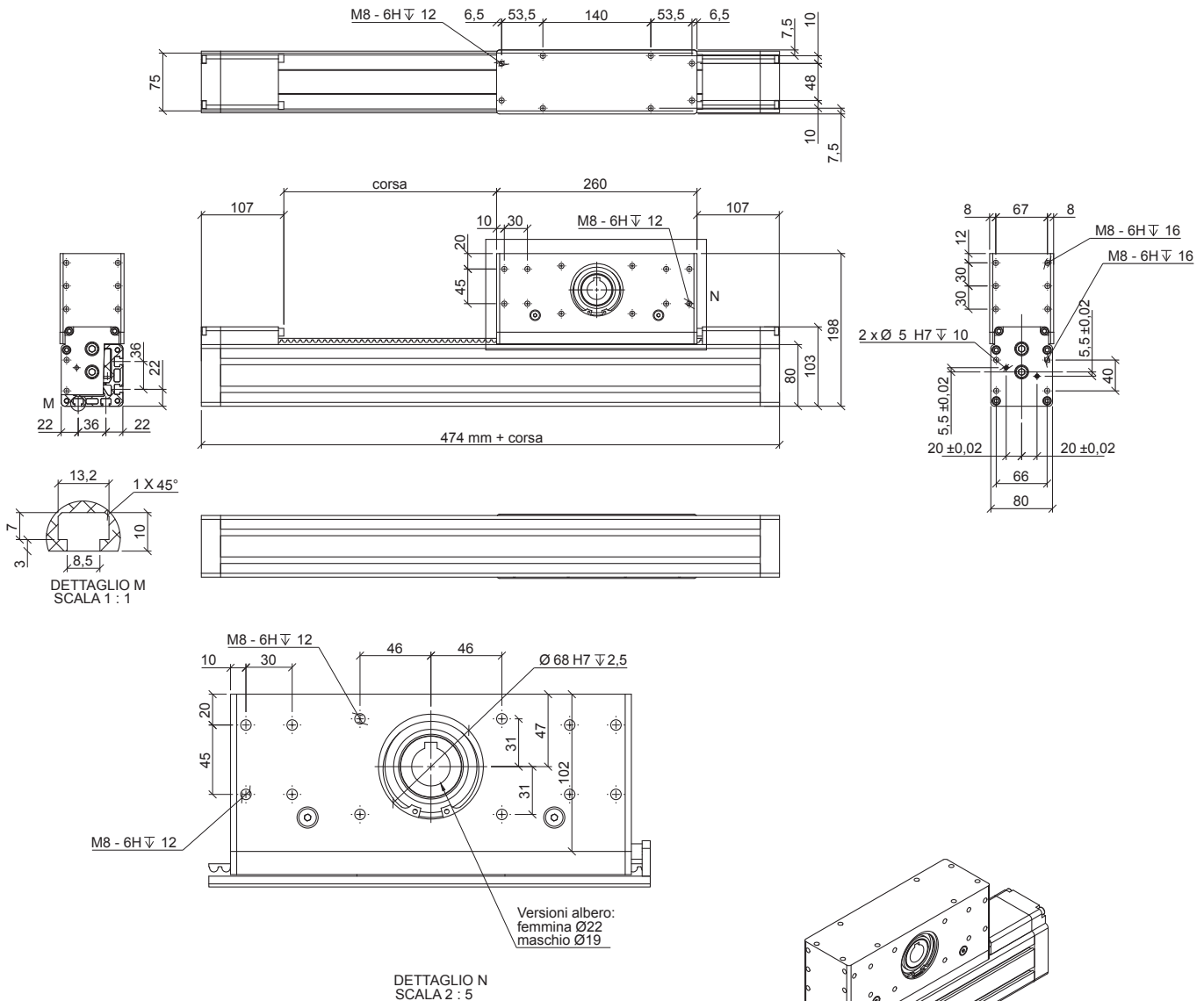
*Die angegebenen Momente und Belastungen sind max. Werte, die nicht überschritten werden sollen. Für weitere Info, bitte wenden Sie sich an unserem Konstruktionsbüro.*

*I carichi e i momenti indicati sono massimi consigliati, per ulteriori informazioni consultare il ns ufficio tecnico.*



Belt driven guided linear unit  
 Linearantrieb mit Zahnriemen und integrierter Kugelumlauführung  
 Attuatori lineari a cinghia e guida a ricircolo di sfere

**MTZ80L-XXXX-XX**



Ordering information:

**MTZ80L-0900-F9**

**Shaft version:**

- F9: female shaft Ø19 mm with keyshaft
- F22: female shaft Ø22 mm with keyshaft
- M22: male shaft Ø22 mm
- D22: double male shaft Ø22 mm

**Stroke mm**

**Series and size 80x80**