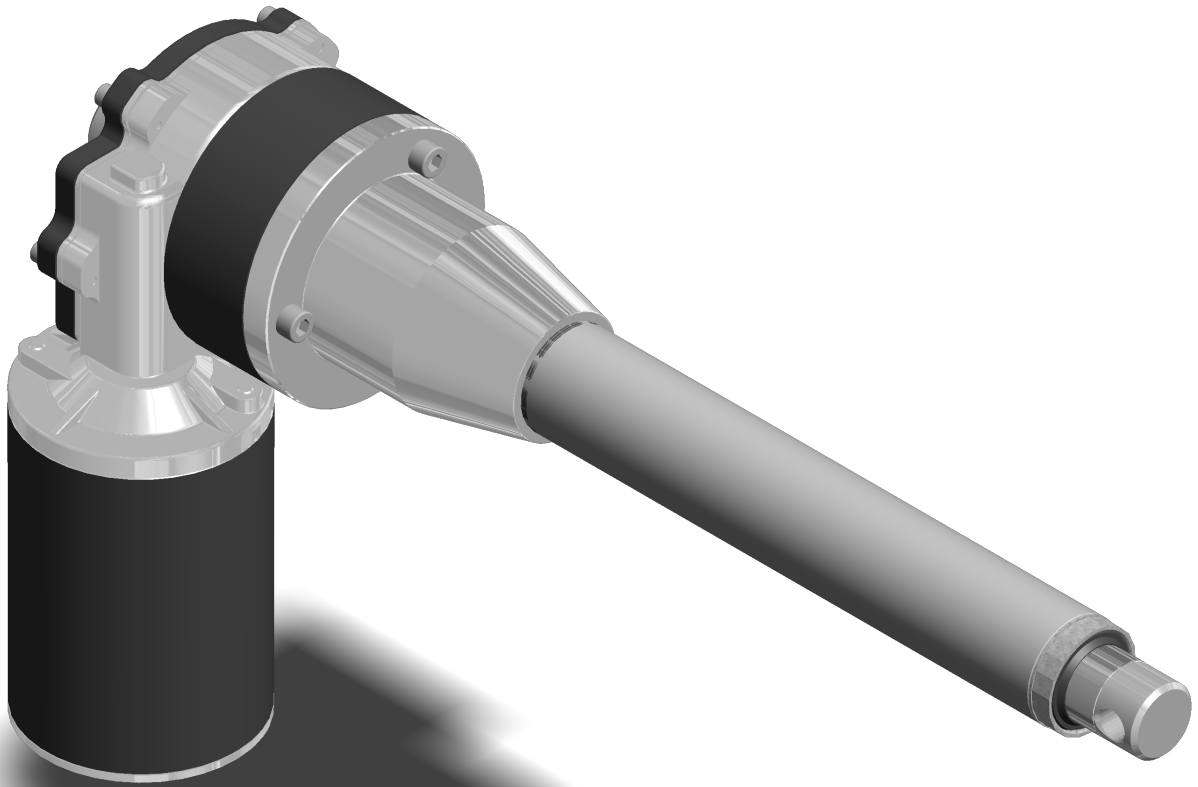




ALI3 XL



FOR EACH LINEAR MOTION THE RIGHT "SIZE" OF MECVEL LINEAR ACTUATOR

The continuous research and development of new products undertaken by the company gives shape to ALI3 XL linear actuator, a new and 100% Made in Italy model created to satisfy the needs of those applications requiring high speed and excellent performance together with medium/heavy load.

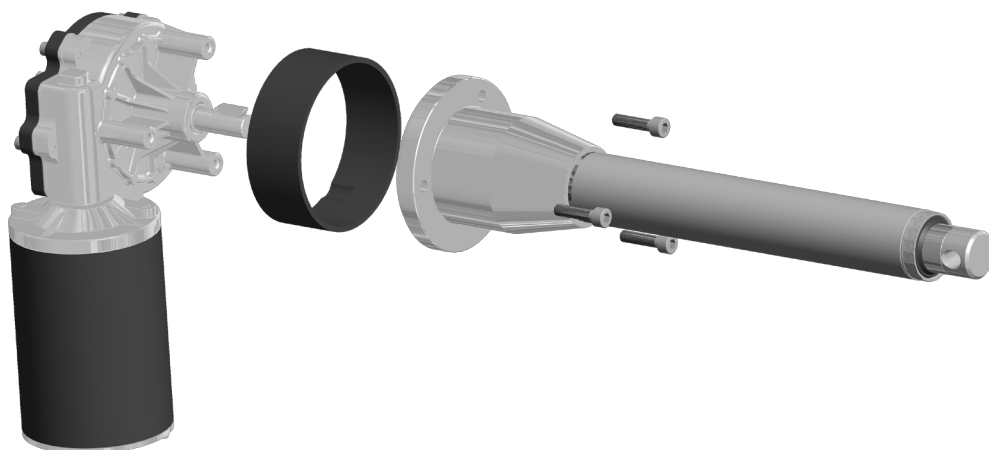
Since 1987 MecVel manufactures electric linear actuators, electromechanical devices using electric motors, gear boxes and push tubes to convert the rotatory motion of the shaft into a linear movement, allowing to lift, position, push or pull any load even up to 400.000 N (40 tons). In addition, the customization service leads to configure each product in detail, in order to set up it according to specific application needs, creating a solution tailored for each customer.

In 2017, year of the 30th birthday, MecVel offers important news: among them, ALI3 XL becomes officially part of the family, thanks to the constant study of new solutions that has brought to the design and the construction of this new product, fitting perfectly in a well-established range, completing it in order to offer more and more the possibility to choose the most appropriate linear actuator "size", according to the kind of motion required.

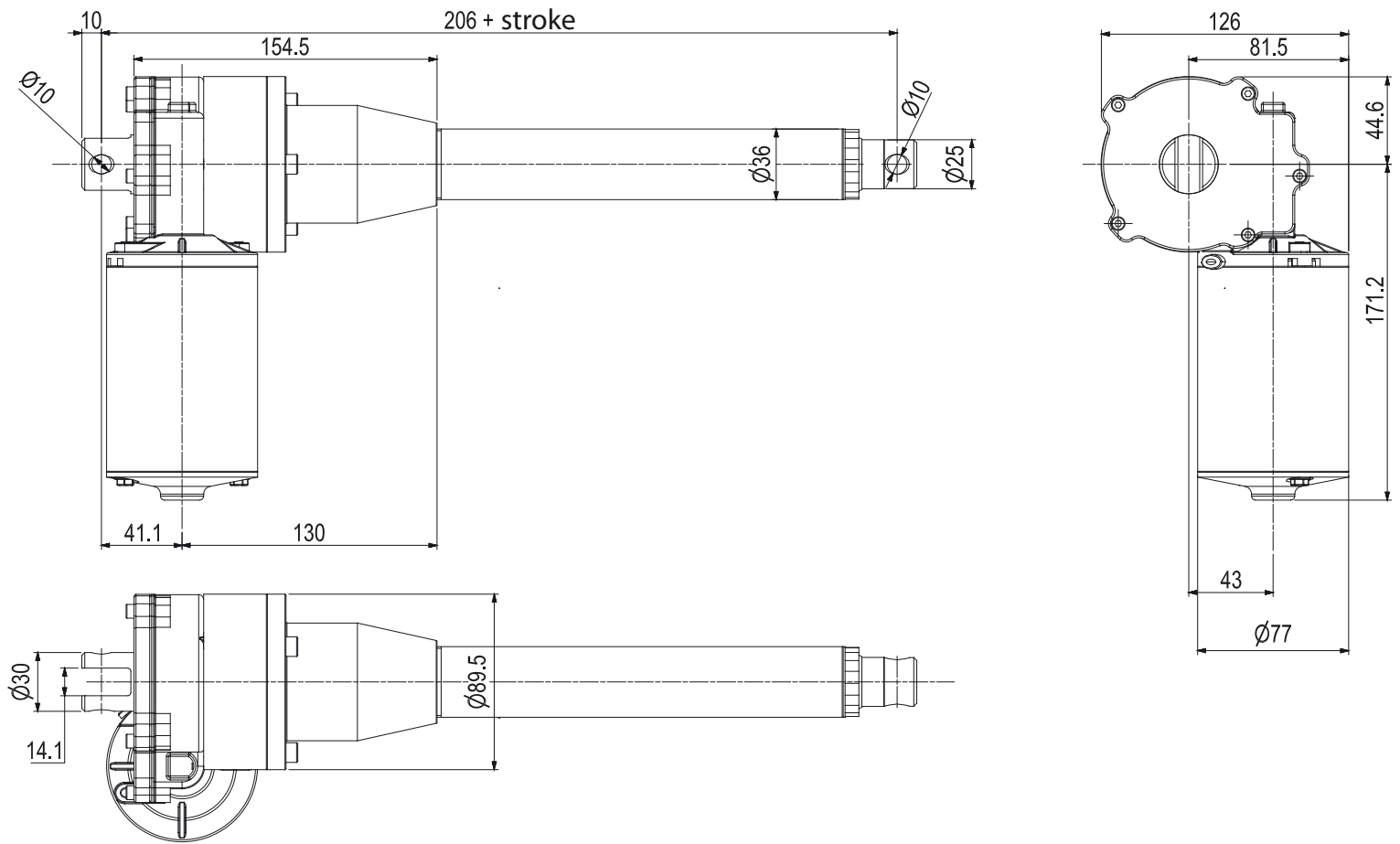
In particular, ALI3 XL keeps in its structure some important components already present in "cornerstones" of MecVel range such as ALI3 and L series: bronze nut, push tube and bearings in use ensure high quality together with a significant reduction in both production costs and assembly time, also thanks to the predisposition of several kits: simply through three screws it is possible to change the gear motor from the "push tube/stroke/limit switches" set. The gear box chosen allow to provide a high increase in performance terms. This product, in fact, is ideal for those applications that with loads up to 6000 N require high speed (from 60 to 15 mm/s in case of maximum load), with limited overall dimensions, offering high efficiency in particular with low loads, as in case of medical applications.

Options such as magnetic limit switches and encoder allow improving the level of control on the movement executed by the linear actuator and the position constantly reached long the stroke. Moreover the use of an eco-friendly and electric system provides easy and essential connections, power only when needed and reliable control (with the possibility of arrests in intermediate positions of the stroke), with minimum noise, low wear and little maintenance, without using pipes, pumps and valves, excluding the risk of contamination due to oil leaks, making this system suitable for applications in sterile environments.

Each MecVel linear actuator is designed to improve and make unique every handling experience and this new product now part of the range is the perfect answer for those applications requiring optimal load capacity together with high speed, but also short delivery times and excellent price-quality ratio.



ALI3 XL DIMENSIONS




Note:

- ALI3 XL-FCM = +34 mm
- ALI3 XL-FCM with stroke > 320 mm = +44 mm
- ALI3 XL with safety nut G = +30 mm
- ALI3 XL with bellows boot B = +20 mm

ALI3 XL PERFORMANCE

Fmax [N]	Speed [mm/s]	Version	Motor size	rpm	D. of the screw [mm]	Pitch of the screw [mm]	Gear ratio	Speed with Fmax [mm/s]	Max. current with Fmax 24 V [bronze nut]
4500	60	M01	77	7050	16	8	15	31	33
6000	30	M02	77	7050	16	4	15	15	30

 MecVel reserves the right to change products information and/or features without notice. All data contained in this brochure are purely indicative and not binding for the company.

ORDERING KEY

AL13 XL / 0200 / M01 / CC-24-77-7050 / M0 / E01 / P1 / A1 / FCM / N. DIS

MODEL: _____

STROKE (step of 50 mm): _____
 es. 200 mm = 0200

VERSION (mm/s): _____
 M01
 M02

MOTOR (DC - indicate version, voltage, size, rpm): _____

MOTOR POSITION: _____
 M0
 None: leave blank

ENCODER: _____
 None: leave blank

REAR END: _____
 P1: eyelet (standard)
 P2: eyelet 90°

FRONT END: _____
 A1: eyelet (standard)
 A3: yoke + clip
 A4: rod end
 A7: M10

OPTIONS: _____
 A: stainless steel version
 B: bellows boot
 FCM: magnetic limit switches
 FX: protective painting
 G: safety nut

DRAWING NUMBER: _____

