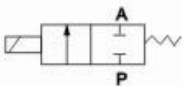


2P Series Solenoid Valve



Symbol



How to Order

2P

2P: Two-position Two-way

025

025:2.5mm

-

06

Port connection
06:1/8
08:1/4

-

AC110V

Voltage
DC12V DC24V
AC24V 50Hz/60Hz
AC110V 50Hz/60Hz
AC220V 50Hz/60Hz
AC380V 50Hz/60Hz

Technical Data

Model	2P025-06			2P025-08	
Working Medium	Air, Water, Oil				
Acting type	Direct acting				
State when not actuated	Normally closed				
CV	0.23				
Port connection	G1/8	G1/4	G1/8	G1/4	
Fluid viscosity	Below 20 CST				
Working pressure	0~0.7MPa				
Proof pressure	1.05MPa				
Operating temperature range	-5~+80℃				
Voltage range	±10%				
Power consumption	AC:7VA/50Hz,9VA/50Hz / DC:6W			AC:5VA/50Hz, / DC:5.5W	
Material of body	Plastic steel				
Seal material	NBR,EPDM or VITON				

Dimensions(mm)

