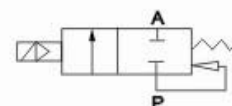


## 5404 Series High Pressure, High Temperature Solenoid Valve



Symbol



### How to Order

**5404** - **04** - **AC110V**

Model

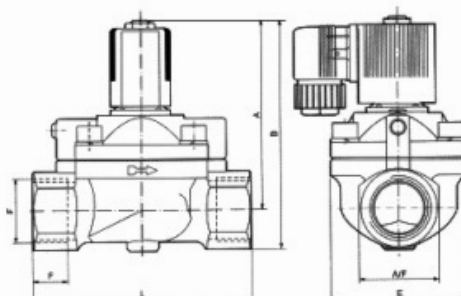
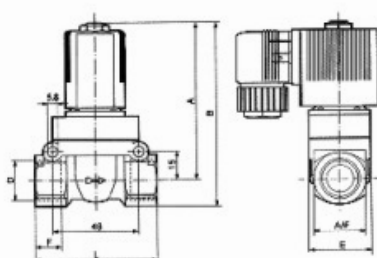
Connection  
04:1/2  
06:3/4  
08:1

Standard Voltage  
DC12V DC24V  
AC24V 50Hz/60Hz / AC110V 50Hz/60Hz  
AC220V 50Hz/60Hz / AC380V 50Hz/60Hz

### Technical data

Model	W5404-04	W5404-06	W5404-08
Working Medium	Air, Water, Oil, Gas		
Motion Pattern	Pilot controlled		
State when not actuated	Normal Closed Type		
mm Aperture of Flow Rate	12	20	25
CV Value	2.0	5.0	10.0
Port connection	G1/2	G3/4	G1
Working-pressure	Gas:0.1~6MPa,Liquid:0.1~5MPa	Gas:0.1~4MPa,Liquid:0.1~2.5MPa	Gas:0.1~4MPa, Liquid:0.1~2.5MPa
Proof pressure	75	60	
Operating temperature range	-5~+150℃		
Voltage range	±10%		
Protect class	IP65		
Power consumption	AC:5.5VA DC9W		
Insulation	F Class		
Material of body	Brass		
Material seal	PTFE		

### Dimensions(mm)



Model	(mm) Bore	Port	A	B
W5404-04	12.0	G1/2	83.0	95.5
W5404-06	20.0	G3/4	93.0	109.0
W5404-08	25.0	G1	99.5	119.0
Model	F	E	L	A/F
W5404-04	14	32	65	27
W5404-06	16	60	100	32
W5404-08	18	70	115	40