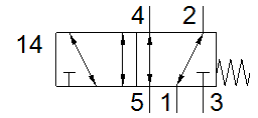
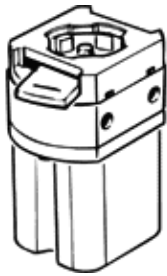


**front panel valve**  
**SV-5-M5-B**

Part number: 11914

**FESTO**



**Data sheet**

| Feature                      | Value  |
|------------------------------|--|
| Valve function               | 5/2 monostable   |
| Type of actuation            | manual   |
| Standard nominal flow rate   | 95 l/min   |
| Operating pressure           | 0 ... 8 bar  |
| Design structure             | Poppet valve with spring return                          |
| Type of reset                | mechanical spring  |
| Nominal size                 | 2.3 mm   |
| Sealing principle            | soft   |
| Assembly position            | Any  |
| Type of piloting             | direct   |
| Overlap                      | Positive overlap   |
| Operating medium             | Compressed air in accordance with ISO8573-1:2010 [-:-:-] |
| Ambient temperature          | -10 ... 60 °C  |
| Actuating force              | 17 N   |
| Product weight               | 53 g   |
| Mounting type                | Front panel installation with through hole               |
| Pneumatic connection, port 1 | M5   |
| Material seals               | NBR  |
| Material housing             | Plastic<br>Brass   |