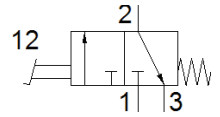


foot valve
F-3-1/4-B

Part number: 8984

Non-detenting.

This type is suitable for vacuum.



Data sheet

Feature	Value
Valve function	3/2 closed, monostable
Type of actuation	manual
Standard nominal flow rate	600 l/min
Operating pressure	-0.95 ... 10 bar
Design structure	Poppet seat
Type of reset	mechanical spring
Nominal size	7 mm
Assembly position	Any
Type of piloting	direct
Flow direction	non reversible
Operating medium	Compressed air in accordance with ISO8573-1:2010 [7:4:4]
Ambient temperature	-10 ... 60 °C
Actuating force	50 N
Product weight	595 g
Mounting type	with through hole
Pneumatic connection, port 1	G1/4
Pneumatic connection, port 2	G1/4
Pneumatic connection, port 3	G1/4
Material seals	NBR
Material housing	Aluminium die cast

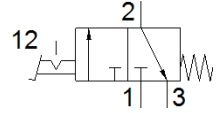
foot valve with detent FPB-3-1/4

Part number: 526984

FESTO

detenting

This type is suitable for vacuum.



Data sheet

Feature	Value
Valve function	3/2 bistable
Type of actuation	manual
Standard nominal flow rate	550 l/min
Operating pressure	-0.95 ... 10 bar
Design structure	Poppet seat
Type of reset	mechanical spring
Nominal size	7 mm
Assembly position	Any
Type of piloting	direct
Flow direction	non reversible
Operating medium	Compressed air in accordance with ISO8573-1:2010 [7:4:4]
Ambient temperature	-10 ... 60 °C
Actuating force	31.5 N
Product weight	610 g
Mounting type	with through hole
Pneumatic connection, port 1	G1/4
Pneumatic connection, port 2	G1/4
Pneumatic connection, port 3	G1/4
Material seals	NBR
Material housing	Aluminium die cast