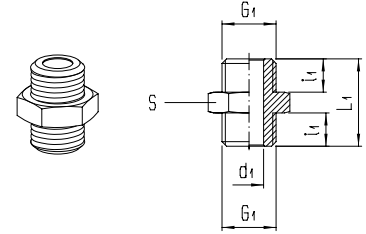


Double Nipple

Product group	16	PN	50	T _{min}	-40 °C	T _{max}	+120 °C	Cylindrical thread	Nickel-plated brass
---------------	-----------	----	----	------------------	--------	------------------	---------	--------------------	---------------------

G1	i1	L1	d1	S	Weight in [g]	Type	Order number	Price
M 5	4	11.5	2	8	2.3	250M-M5	250251	o. r.
G 1/8	6	16.5	5	13	8.9	250M-1/8	250253	o. r.
G 1/4	8	21	7	17	19.5	250M-1/4	250257	o. r.
G 3/8	9	23	10	19	26.8	250M-3/8	250260	o. r.
G 1/2	10	25.5	13	24*	44.7	250M-1/2	250262	o. r.

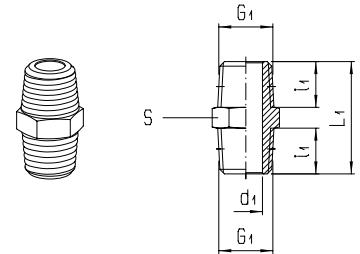
Illustration



Double Nipple

Product group	16	PN	50	T _{min}	-40 °C	T _{max}	+120 °C	Conical thread	Thread self-sealing by pre-coating "D"	Option "D"	T _{max}	+100 °C	Nickel-plated brass
---------------	-----------	----	----	------------------	--------	------------------	---------	----------------	--	------------	------------------	---------	---------------------

R 1/8	7.5	19.5	5.5	10	-	7.5	250M-1/8K	250353	o. r.
R 1/4	11	27	8	14	-	17.1	250M-1/4K	250357	o. r.
R 3/8	11.5	28	11	17	-	25.5	250M-3/8K	250360	o. r.
R 1/2	14	33.5	15	22	-	42.1	250M-1/2K	250362	o. r.
R 3/4	16	39	19	27	-	78.9	250M-3/4K	250364	o. r.



* S24 = octagon

Fitting Accessories Nickel-Plated Brass / Alu



CHARACTERISTICS

BODY MATERIAL / SUITABILITY

Nickel-plated brass	CuZn39Pb3, electrolytically nickel-plated (on request also chemically nickel-plated)
Aluminium	Aluminium alloy AlCuMgPbF37

THREAD

External thread	"M" cylindrical thread: Metric ISO thread M5
External thread	"G" cylindrical thread: Whitworth pipe thread DIN ISO 228-1 G 1/8 to G 3/4
External thread	"R" conical thread: Whitworth pipe thread DIN 2999-1 and ISO 7/1 R 1/8 to R 3/4. Dimensions constructed so with inner thread there can be pairing according to DIN ISO 228-1.
Internal thread	"M" cylindrical thread: Metric ISO thread M5
Internal thread	"G" cylindrical thread: Whitworth pipe thread DIN ISO 228-1 G 1/8 to G 1/2

OPERATING PRESSURE / TEMPERATURE

Metal version	<table border="1"> <tr> <td>PN</td> <td>T_{min}</td> <td>-40 °C</td> <td rowspan="2">Means that the fitting can be used up to the given nominal pressure PN within the specified temperature range "T".</td> </tr> <tr> <td>50</td> <td>T_{max}</td> <td>+120 °C</td> </tr> </table>	PN	T_{min}	-40 °C	Means that the fitting can be used up to the given nominal pressure PN within the specified temperature range "T".	50	T_{max}	+120 °C
PN	T_{min}	-40 °C	Means that the fitting can be used up to the given nominal pressure PN within the specified temperature range "T".					
50	T_{max}	+120 °C						
Permitted operating pressure and temperature of pipe/tube must be observed.								

THREAD SEAL

Cylindrical threaded nipple	Seal with sealing rings made of copper, fibre, aluminium, polyamide or hard PVC	
Conical threaded nipple	"G" cylindrical thread: Whitworth pipe thread DIN ISO 228-1 G 1/8 to G 3/4	
	<table border="1"> <tr> <td>Option: "D" self-sealing</td> <td>Seal with sealant Film with non-reactive mineral solid materials, non-adhesive. Resistant to air, water, motor oils etc.</td> </tr> </table>	Option: "D" self-sealing
Option: "D" self-sealing	Seal with sealant Film with non-reactive mineral solid materials, non-adhesive. Resistant to air, water, motor oils etc.	

"POSITIONABLE" VERSION

Reducer nipple type 232 see "Reducer - Positionable"	<table border="1"> <tr> <td>Not suitable for rotating or oscill. movements.</td> <td>This nipple is 360°-positionable to facilitate adjustment during assembly.</td> </tr> </table>	Not suitable for rotating or oscill. movements.	This nipple is 360°-positionable to facilitate adjustment during assembly.
Not suitable for rotating or oscill. movements.	This nipple is 360°-positionable to facilitate adjustment during assembly.		