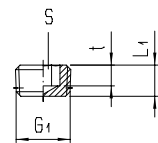


Blind Plug							Illustration	
Product group	16	PN 50	T _{min} -40 °C T _{max} +120 °C	Conical thread	Brass			
G1	L1	t	S	Weight in [g]	Type	Order number	Price	
R 1/8	5	3	5	2	257U-1/8K	251303	o. r.	
R 1/4	7.5	5	7	5	257U-1/4K	251307	o. r.	
R 3/8	8	5	8	9.9	257U-3/8K	251310	o. r.	
R 1/2	9	6	10	17.7	257U-1/2K	251312	o. r.	
R 3/4	10	7	12	36.3	257U-1/2K	251314	o. r.	



* S24 = octagon

Fitting Accessories Nickel-Plated Brass / Alu



CHARACTERISTICS

BODY MATERIAL / SUITABILITY

Nickel-plated brass	CuZn39Pb3, electrolytically nickel-plated (on request also chemically nickel-plated)						
Aluminium	Aluminium alloy AlCuMgPbF37						
THREAD							
External thread	"M" cylindrical thread: Metric ISO thread M5						
External thread	"G" cylindrical thread: Whitworth pipe thread DIN ISO 228-1 G 1/8 to G 3/4						
External thread	"R" conical thread: Whitworth pipe thread DIN 2999-1 and ISO 7/1 R 1/8 to R 3/4. Dimensions constructed so with inner thread there can be pairing according to DIN ISO 228-1.						
Internal thread	"M" cylindrical thread: Metric ISO thread M5						
Internal thread	"G" cylindrical thread: Whitworth pipe thread DIN ISO 228-1 G 1/8 to G 1/2						
OPERATING PRESSURE / TEMPERATURE							
Metal version	<table border="1"> <tr> <td>PN</td> <td>T_{min} -40 °C</td> <td rowspan="2">Means that the fitting can be used up to the given nominal pressure PN within the specified temperature range "T".</td> </tr> <tr> <td>50</td> <td>T_{max} +120 °C</td> </tr> </table>	PN	T_{min} -40 °C	Means that the fitting can be used up to the given nominal pressure PN within the specified temperature range "T".	50	T_{max} +120 °C	
PN	T_{min} -40 °C	Means that the fitting can be used up to the given nominal pressure PN within the specified temperature range "T".					
50	T_{max} +120 °C						
Permitted operating pressure and temperature of pipe/tube must be observed.							
THREAD SEAL							
Cylindrical threaded nipple	Seal with sealing rings made of copper, fibre, aluminium, polyamide or hard PVC						
Conical threaded nipple	"G" cylindrical thread: Whitworth pipe thread DIN ISO 228-1 G 1/8 to G 3/4						
	Option: "D" self-sealing	Seal with sealant Film with non-reactive mineral solid materials, non-adhesive. Resistant to air, water, motor oils etc.					
"POSITIONABLE" VERSION							
Reducer nipple type 232 see "Reducer - Positionable"	Not suitable for rotating or oscill. movements.	This nipple is 360°-positionable to facilitate adjustment during assembly.					