

## Blind Plug

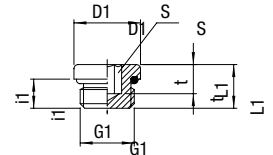
Product group	<b>13</b>	PN	25	T <sub>min</sub>	-20 °C	Thread	cylindrical	Seal FKM (FDA-compliant)
				T <sub>max</sub>	+140 °C			



Stainless steel  
AISI 316L

G1	i1	L1	D1	t	S	Weight in [g]	Type	Order number	Price
G 1/8	5	8	13	4	5	4.6	262X4-1/8FF	356522	o. r.
G 1/4	7	10.5	16	5.5	6	9.2	262X4-1/4FF	356526	o. r.
G 3/8	8	11.5	20	6	8	16.2	262X4-3/8FF	356529	o. r.
G 1/2	9	13	25	6	10	29	262X4-1/2FF	356532	o. r.

## Illustration



## Fitting Accessories Stainless Steel AISI 316L (1.4404)

**Stainless steel version**

Operating pressure Technical vacuum up to maximum pressure as stated in the respective specification table under PN.

Temperature range: -40 °C to +140 °C (for restrictions see specification table)

**Application**

Fitting accessories made of stainless steel 1.4404 are used in particular for aggressive gaseous and liquid media under harsh operating conditions. These connectors are equipped with FDA-compliant FKM sealing rings, on request they are available with FDA-compliant and KTW-approved EPDM sealing rings.

## CHARACTERISTICS

## BODY MATERIAL / SUITABILITY

<b>Stainless steel AISI 316L</b>	Corresponds to <b>1.4404 stainless steel</b> . Suitable for many aggressive media, in particular at higher pressures. The FKM seal is FDA-compliant and can be used in the food and pharmaceutical industries.						
Approval	NSF/ANSI 169						
THREAD							
External thread	"G" cylindrical thread: Whitworth pipe thread DIN ISO 228-1 G 1/8-G 1/2						
External thread	"R" conical thread: Whitworth pipe thread DIN 2999-1 and ISO 7/1 R 1/8 up to R 1/2. Designed so it can be paired with internal thread according to DIN ISO 228-1.						
Internal thread	"G" cylindrical thread: Whitworth pipe thread DIN ISO 228-1 G 1/8 up to G 1/2						
OPERATING PRESSURE / TEMPERATURE							
Metal version	<table border="1"> <tr> <td>PN</td> <td>T<sub>min</sub> -40 °C</td> <td rowspan="2">Means that the fitting can be used up to the shown nominal pressure PN in the specified temperature range "T".</td> </tr> <tr> <td>50</td> <td>T<sub>max</sub> +140 °C</td> </tr> </table>	PN	T <sub>min</sub> -40 °C	Means that the fitting can be used up to the shown nominal pressure PN in the specified temperature range "T".	50	T <sub>max</sub> +140 °C	
PN	T <sub>min</sub> -40 °C	Means that the fitting can be used up to the shown nominal pressure PN in the specified temperature range "T".					
50	T <sub>max</sub> +140 °C						
<b>Allowable operating pressure and operating temperature of pipe/tube must be complied with.</b>							
THREAD SEAL							
Cylindrical threaded nipple	Seal with FKM sealing rings (FDA-compliant)						
Conical threaded nipple	Seal with Teflon tape winding (FDA-compliant) on request						