

Fitting Accessories Nickel-Plated Brass / Alu



CHARACTERISTICS

BODY MATERIAL / SUITABILITY

Nickel-plated brass	CuZn39Pb3, electrolytically nickel-plated (on request also chemically nickel-plated)
Aluminium	Aluminium alloy AlCuMgPbF37

THREAD

External thread	“M” cylindrical thread: Metric ISO thread M5
External thread	“G” cylindrical thread: Whitworth pipe thread DIN ISO 228-1 G 1/8 to G 3/4
External thread	“R” conical thread: Whitworth pipe thread DIN 2999-1 and ISO 7/1 R 1/8 to R 3/4. Dimensions constructed so with inner thread there can be pairing according to DIN ISO 228-1.
Internal thread	“M” cylindrical thread: Metric ISO thread M5
Internal thread	“G” cylindrical thread: Whitworth pipe thread DIN ISO 228-1 G 1/8 to G 1/2

OPERATING PRESSURE / TEMPERATURE

Metal version	<table border="1"> <tr> <td>PN</td> <td>$T_{min} -40\text{ }^{\circ}\text{C}$</td> <td rowspan="2">Means that the fitting can be used up to the given nominal pressure PN within the specified temperature range “T”.</td> </tr> <tr> <td>50</td> <td>$T_{max} +120\text{ }^{\circ}\text{C}$</td> </tr> </table>	PN	$T_{min} -40\text{ }^{\circ}\text{C}$	Means that the fitting can be used up to the given nominal pressure PN within the specified temperature range “T”.	50	$T_{max} +120\text{ }^{\circ}\text{C}$
PN	$T_{min} -40\text{ }^{\circ}\text{C}$	Means that the fitting can be used up to the given nominal pressure PN within the specified temperature range “T”.				
50	$T_{max} +120\text{ }^{\circ}\text{C}$					
Permitted operating pressure and temperature of pipe/tube must be observed.						

THREAD SEAL

Cylindrical threaded nipple	Seal with sealing rings made of copper, fibre, aluminium, polyamide or hard PVC	
Conical threaded nipple	“G” cylindrical thread: Whitworth pipe thread DIN ISO 228-1 G 1/8 to G 3/4	
	<table border="1"> <tr> <td>Option: “D” self-sealing</td> <td>Seal with sealant Film with non-reactive mineral solid materials, non-adhesive. Resistant to air, water, motor oils etc.</td> </tr> </table>	Option: “D” self-sealing
Option: “D” self-sealing	Seal with sealant Film with non-reactive mineral solid materials, non-adhesive. Resistant to air, water, motor oils etc.	

“POSITIONABLE” VERSION

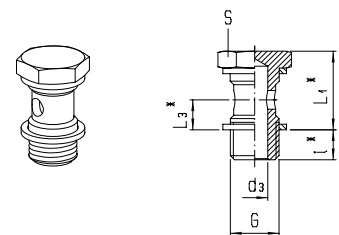
Reducer nipple type 232 see “Reducer - Positionable”	<table border="1"> <tr> <td>Not suitable for rotating or oscill. movements.</td> <td>This nipple is 360°-positionable to facilitate adjustment during assembly.</td> </tr> </table>	Not suitable for rotating or oscill. movements.	This nipple is 360°-positionable to facilitate adjustment during assembly.
Not suitable for rotating or oscill. movements.	This nipple is 360°-positionable to facilitate adjustment during assembly.		

Banjo Bolt - Short

Product group	16	PN	16	T _{min}	-20 °C	T _{max}	+80 °C	Cylindrical thread	Nickel-plated brass
---------------	-----------	----	----	------------------	--------	------------------	--------	--------------------	----------------------------

G	Sealing rings	i*	L1*	L3*	d3	S	Weight in [g]	Type	Order number	Price
M 5	Polyamide	4.5	13.5	5	2	8	3.1	163M-11-M5N	304002	o. r.
M 10x1	Aluminium	6.5	20.5	8	5	13	12.8	163M-11-M10x1A	304005	o. r.
M 10x1	Polyamide	6.5	20.5	8	5	13	12.6	163M-11-M10x1N	304006	o. r.
G 1/8	Aluminium	6	20.5	8	5	14	13.1	163M-11-1/8A	304025	o. r.
G 1/8	Polyamide	6	20.5	8	5	14	12.8	163M-11-1/8N	304026	o. r.
G 1/4	Aluminium	8	21	8	7	17	23.9	163M-11-1/4A	304029	o. r.
G 1/4	Polyamide	8	21	8	7	17	23.5	163M-11-1/4N	304030	o. r.
G 3/8	Aluminium	9	22	8.5	9.5	19	35.8	163M-11-3/8A	304033	o. r.
G 3/8	Polyamide	9	22	8.5	9.5	19	35.3	163M-11-3/8N	304034	o. r.
G 1/2	Aluminium	9.5	22	8.5	12	27	65.1	163M-11-1/2A	304037	o. r.
G 1/2	Polyamide	9.5	22	8.5	12	27	64.8	163M-11-1/2N	304038	o. r.

Illustration

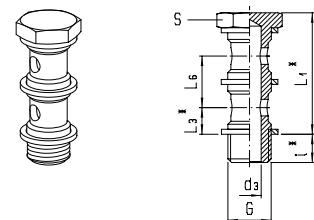


Banjo Bolt - Double Stacking - Short

Product group	16	PN	16	T _{min}	-20 °C	T _{max}	+80 °C	Cylindrical thread	Nickel-plated brass
---------------	-----------	----	----	------------------	--------	------------------	--------	--------------------	----------------------------

G	Sealing rings	i*	L1*	L3*	L6	d3	S	Weight in [g]	Type	Order number	Price
G 1/8	Aluminium	6.5	36	8	15.5	5	14	18.3	163M-21-1/8A	304425	o. r.
G 1/8	Polyamide	6.5	36	8	15.5	5	14	17.8	163M-21-1/8N	304426	o. r.
G 1/4	Aluminium	8.5	36.5	8	15.5	7	17	33.6	163M-21-1/4A	304429	o. r.
G 1/4	Polyamide	8.5	36.5	8	15.5	7	17	33.1	163M-21-1/4N	304430	o. r.
G 3/8	Aluminium	8.5	37.5	8.5	15.5	9.5	19	49.1	163M-21-3/8A	304433	o. r.
G 3/8	Polyamide	8.5	37.5	8.5	15.5	9.5	19	48.3	163M-21-3/8N	304434	o. r.
G 1/2	Aluminium	9.5	37.5	8.5	15.5	12	27	85.8	163M-21-1/2A	304437	o. r.
G 1/2	Polyamide	9.5	37.5	8.5	15.5	12	27	85.3	163M-21-1/2N	304438	o. r.

Illustration



Banjo Bolt - Triple Stacking - Short

Product group	16	PN 16	T _{min} -20 °C T _{max} +80 °C	Cylindrical thread	Nickel-plated brass
---------------	-----------	----------	--	--------------------	----------------------------

G	Sealing rings	i*	L1*	L3*	L6	d3	S	Weight in (g)	Type	Order number	Price
G 1/8	Aluminium	6.5	51	7.5	15.5	5	14	23.2	163M-31-1/8A	304825	o. r.
G 1/8	Polyamide	6.5	51	7.5	15.5	5	14	22.6	163M-31-1/8N	304826	o. r.
G 1/4	Aluminium	8.5	51.5	7.5	15.5	7	17	43	163M-31-1/4A	304829	o. r.
G 1/4	Polyamide	8.5	51.5	7.5	15.5	7	17	42.3	163M-31-1/4N	304830	o. r.
G 3/8	Aluminium	8.5	53.5	9	15.5	9.5	19	62.9	163M-31-3/8A	304833	o. r.
G 3/8	Polyamide	8.5	53.5	9	15.5	9.5	19	61.8	163M-31-3/8N	304834	o. r.
G 1/2	Aluminium	9.5	53.5	9	15.5	12	27	109.7	163M-31-1/2A	304837	o. r.
G 1/2	Polyamide	9.5	53.5	9	15.5	12	27	108.9	163M-31-1/2N	304838	o. r.

Illustration

