

Mounting Accessories for Cylinders

Mounting for ISO 1552 in aluminium



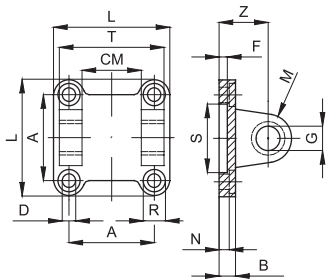
Standard executions		
Version	Symbol	Type
Rear female clevis		CF..ALIS
Rear male eye		CM..ALIS
Narrow rear female clevis		CFS..ALIS
Front female clevis		CFA..ALIS
Narrow rear eye with bearing DIN 648K		CMS..ALIS
VDMA Flange MF1 / MF2		FLV..ALIS
Rear 90° hinge CETOPRP107P		ASV..ALIS
Rear 90° hinge ISO 6431		AS..ALIS



Technical data	
Material	Die-cast aluminium
Treatment	Sifting

Note: Types ..ALIS+VP supplied with pin and mounting screws.
 Typen ..ALIS+V supplied with mounting screws.
 For screws (if not supplied) see page 1.101.1

Type: CF



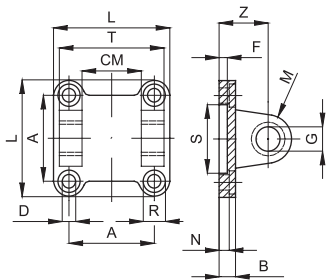
Rear female clevis MP2

Code	Item	For cyl. Ø mm	A	L	D	R	N	B	S	F	Z	G	M	CM	T	Weight (g)
042050	CF032ALIS+VP	32	32,5	45	6,6	11	5,5	9	30	5	22	10	10	26	45	48
042051	CF040ALIS+VP	40	38	52	6,6	11	5,5	9	35	5	25	12	12	28	52	75
042052	CF050ALIS+VP	50	46,5	65	9	15	6,5	11	40	5	27	12	12	32	60	124
042053	CF063ALIS+VP	63	56,5	75	9	15	6,5	11	45	5	32	16	16	40	70	192
042054	CF080ALIS+VP	80	72	95	11	18	10	14	45	5	36	16	16	50	90	380
042055	CF100ALIS+VP	100	89	115	11	18	10	14	55	5	41	20	20	60	110	620
042056	CF125ALIS+VP	125	110	140	14	20	10	20	60	7	50	25	25	70	130	1180
042057	CF160ALIS+VP	160	140	180	18	26	10	20	65	7	55	30	25	90	170	1780
042058	CF200ALIS+VP	200	175	220	18	26	11	25	75	7	60	30	25	90	170	2900
042059	CF250ALIS+VP	250	220	270	22	33	11	25	90	11	70	40	40	110	200	5800
042060	CF300ALIS+VP	320	270	350	26	39	15	30	110	11	80	45	45	120	220	-

Code	Item	For cyl. Ø mm	A	L	D	R	N	B	S	F	Z	G	M	CM	T	Weight (g)
040441	CF032ALIS+V	32	32,5	45	6,6	11	5,5	9	30	5	22	10	10	26	45	48
040442	CF040ALIS+V	40	38	52	6,6	11	5,5	9	35	5	25	12	12	28	52	75
040443	CF050ALIS+V	50	46,5	65	9	15	6,5	11	40	5	27	12	12	32	60	124
040444	CF063ALIS+V	63	56,5	75	9	15	6,5	11	45	5	32	16	16	40	70	192
040445	CF080ALIS+V	80	72	95	11	18	10	14	45	5	36	16	16	50	90	380
040446	CF100ALIS+V	100	89	115	11	18	10	14	55	5	41	20	20	60	110	620
040447	CF125ALIS+V	125	110	140	14	20	10	20	60	7	50	25	25	70	130	1180
040448	CF160ALIS+V	160	140	180	18	26	10	20	65	7	55	30	25	90	170	1780
040449	CF200ALIS+V	200	175	220	18	26	11	25	75	7	60	30	25	90	170	2900
040450	CF250ALIS+V	250	220	270	22	33	11	25	90	11	70	40	40	110	200	5800
040459	CF300ALIS+V	320	270	350	26	39	15	30	110	11	80	45	45	120	220	-

The pin has to be ordered separately: for the pin see page 1.98.2 (SEC..AQIS)

Type: CM



Rear male eye MP4

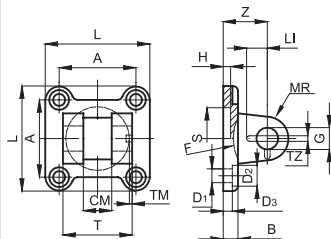
Code	Item	For cyl. Ø mm	A	L	D	R	N	G	S	F	C	M	T	B	Weight (g)	
042061	CM032ALIS+V	32	32,5	45	6,6	11	5,5	9	30	5	22	10	10	26	54	
042062	CM040ALIS+V	40	38	52	6,6	11	5,5	9	35	5	25	12	12	28	76	
042063	CM050ALIS+V	50	46,5	65	9	15	6,5	11	40	5	27	12	12	32	-0,2	124
042064	CM063ALIS+V	63	56,5	75	9	15	6,5	11	45	5	32	16	16	40	-0,6	212
042065	CM080ALIS+V	80	72	95	11	18	10	14	45	5	36	16	16	50	420	
042066	CM100ALIS+V	100	89	115	11	18	10	14	55	5	41	20	20	60	666	
042067	CM125ALIS+V	125	110	140	14	20	10	20	60	7	50	25	25	70	1264	
042068	CM160ALIS+V	160	140	180	18	26	10	20	65	7	55	30	25	90	1846	
042069	CM200ALIS+V	200	175	220	18	26	11	25	75	7	60	30	25	90	-0,5	2950
042070	CM250ALIS+V	250	220	270	22	33	11	25	90	11	70	40	40	110	-1,2	6200
042071	CM300ALIS+V	320	270	350	26	39	15	30	110	11	80	50	45	120	-	

Mounting Accessories for Cylinders

Mounting for ISO 1552 in aluminium



Type: CFS



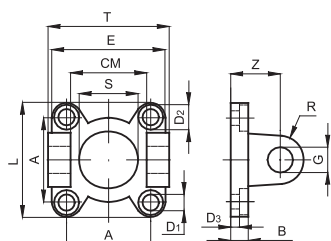
Narrow rear female clevis for rear male trunnion with bearing DIN 648K

Code	Item	For cyl. Ø mm	L	T	CM	A	Z	H	B	D ₃	S	G	MR	D ₁	D ₂	TM	TZ	LI	F	Weight (g)
042110	CFS032ALIS+VP	32	45	34	14	32,5	22	5	9	5,5	30	10	10	6,6	11	3	3,3	11,5	17	42
042111	CFS040ALIS+VP	40	52	40	16	38	25	5	9	5,5	35	12	12	6,6	11	4	4,3	12	20	70
042112	CFS050ALIS+VP	50	65	45	21	46,5	27	5	11	6,5	40	16	14	9	15	4	4,3	14	22	112
042113	CFS063ALIS+VP	63	75	51	21	56,5	32	5	11	6,5	45	16	18	9	15	4	4,3	14	25	194
042114	CFS080ALIS+VP	80	95	65	25	72	36	5	14	10	45	20	20	11	18	4	4,3	16	30	382
042115	CFS100ALIS+VP	100	115	75	25	89	41	5	14	10	55	20	22	11	18	4	6,3	16	32	610
042116	CFS125ALIS+VP	125	140	97	37	110	50	7	20	10	60	30	25	14	20	6	6,3	24	42	1100
042117	CFS160ALIS+VP	160	180	122	43	140	55	7	20	10	65	35	30	18	26	6	6,3	26,5	46	2030
042118	CFS200ALIS+VP	200	220	122	43	175	60	7	25	11	75	35	30	18	26	6	6,3	26,5	49	3400

Code	Item	For cyl. Ø mm	L	T	CM	A	Z	H	B	D ₃	S	G	MR	D ₁	D ₂	TM	TZ	LI	F	Weight (g)
040451	CFS032ALIS+V	32	45	34	14	32,5	22	5	9	5,5	30	10	10	6,6	11	3	3,3	11,5	17	42
040452	CFS040ALIS+V	40	52	40	16	38	25	5	9	5,5	35	12	12	6,6	11	4	4,3	12	20	70
040453	CFS050ALIS+V	50	65	45	21	46,5	27	5	11	6,5	40	16	14	9	15	4	4,3	14	22	112
040454	CFS063ALIS+V	63	75	51	21	56,5	32	5	11	6,5	45	16	18	9	15	4	4,3	14	25	194
040455	CFS080ALIS+V	80	95	65	25	72	36	5	14	10	45	20	20	11	18	4	4,3	16	30	382
040456	CFS100ALIS+V	100	115	75	25	89	41	5	14	10	55	20	22	11	18	4	6,3	16	32	610
040457	CFS125ALIS+V	125	140	97	37	110	50	7	20	10	60	30	25	14	20	6	6,3	24	42	1100
040458	CFS160ALIS+V	160	180	122	43	140	55	7	20	10	65	35	30	18	26	6	6,3	26,5	46	2030
040498	CFS200ALIS+V	200	220	122	43	175	60	7	25	11	75	35	30	18	26	6	6,3	26,5	49	3400

The pin has to be ordered separately: for the pin see page 1.98.3 (SEC..ARAQIS).

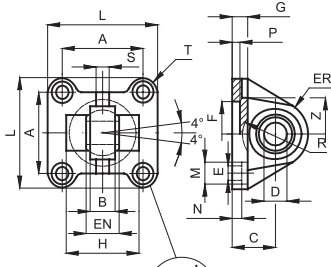
Type: CFA



Front female clevis

Code	Item	For cyl. Ø mm	A	E	D ₁	D ₂	D ₃	B	S	Z	G	R	CM	T	Weight (g)
040473	CFA032ALIS+V	32	32,5	45	6,6	11	9	10	30	22	10	10	26	45	48
040474	CFA040ALIS+V	40	38	52	6,6	11	9	10	35	25	12	12	28	52	75
040017	CFA050ALIS+V	50	46,5	65	9	15	11	12	40	27	12	12	32	60	124
040471	CFA063ALIS+V	63	56,5	75	9	15	11	12	45	32	16	16	40	70	192
040051	CFA080ALIS+V	80	72	95	11	18	14	16	45	36	16	16	50	90	380
040478	CFA100ALIS+V	100	89	115	11	18	14	16	55	41	20	20	60	110	620
040475	CFA125ALIS+V	125	110	140	14	20	20	22	60	50	25	25	70	130	1180
040477	CFA160ALIS+V	160	140	180	18	26	20	22	65	55	30	25	90	170	1780
040479	CFA200ALIS+V	200	175	220	18	26	25	28	75	60	30	25	9'	170	2900

Type: CMS



Narrow rear eye with bearing DIN 648 K

Code	Item	For cyl. Ø mm	A	B	C	D	EN	ER	F	G	E	L	M	N	P	H	R	S	Z	T	Weight (g)
042101	CMS032ALIS+V	32	32,5	10,5	22	10	14	16	30	9	6,6	45	11	5,5	5	-	-	4	32,5	6,25	62
042102	CMS040ALIS+V	40	38	12	25	12	16	19	35	9	6,6	52	11	5,5	5	-	-	6	39	7	100
042103	CMS050ALIS+V	50	46,5	15	27	16	21	21	40	11	9	65	15	6,5	5	51	18	8	47	9,25	180
042104	CMS063ALIS+V	63	56,5	15	32	16	21	24	45	11	9	75	15	6,5	5	-	-	8	52	9,25	244
042105	CMS080ALIS+V	80	72	18	36	20	25	28,5	45	14	11	95	18	10	5	72	24	10	67	11,5	476
042106	CMS100ALIS+V	100	89	18	41	20	25	30	55	14	11	115	18	10	5	-	-	10	77	13	646
042107	CMS125ALIS+V	125	110	25	50	30	37	40	60	20	13,5	140	20	10	7	-	-	13	98	15	1410
042108	CMS160ALIS+V	160	140	28	55	35	43	45	65	20	18	180	26	10	7	-	-	14	130	20	2420
042109	CMS200ALIS+V	200	175	28	60	35	43	48	75	25	18	220	26	11	7	-	-	14	155	22,5	3840
040160	CMS250ALIS+V	250	220	33	70	40	49	52	90	25	22	270	33	11	11	-	-	19	205	25	5850

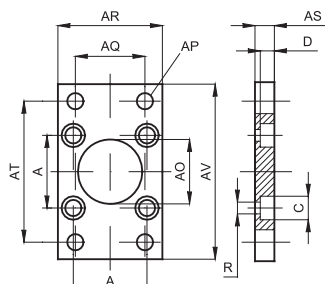
Mounting Accessories for Cylinders

Mounting for ISO 1552 in aluminium



1

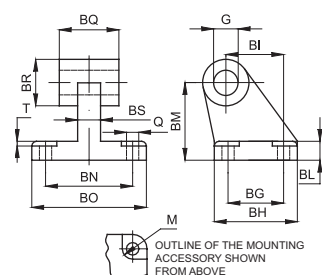
Type: FLV



VDMA Flange MF1 / MF2

Code	Item	For cyl. Ø mm	A	AP Ø	AO	R	AS	AR	AQ	AT	AV	C	D	Weight (g)
042150	FLV032ALIS+V	32	32,5	7	30	6,5	10	45	32	64	80	10,5	6,5	-
042151	FLV040ALIS+V	40	38	9	35	6,5	10	52	36	72	90	10,5	6,5	-
042152	FLV050ALIS+V	50	46,5	9	40	8,5	12	65	45	90	110	13,5	8,5	-
042153	FLV063ALIS+V	63	56,5	9	45	8,5	12	75	50	100	120	13,5	8,5	-
042154	FLV080ALIS+V	80	72	12	45	10,5	16	95	63	126	150	16,5	10,5	-
042155	FLV100ALIS+V	100	89	14	55	10,5	16	115	75	150	170	16,5	10,5	-
042156	FLV125ALIS+V	125	110	16	60	13,5	20	140	90	180	205	20	12,5	-
042157	FLV160ALIS+V	160	140	18	65	17	20	180	115	230	260	25	16,5	-
042158	FLV200ALIS+V	200	175	22	75	17	25	220	135	270	300	25	16,5	-

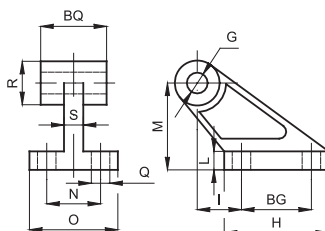
Type: ASV



Rear 90° hinge
CETOP RP 107P

Code	Item	For cyl. Ø mm	Q	M	BG	BH	BI	BL	BM	BN	BO	BS	BR	G	T	BQ	Weight (g)
042081	ASV032ALIS+V	32	6,6	11	18	31	21	8	32	38	51	10	20	10	1,6	26	56
042082	ASV040ALIS+V	40	6,6	11	22	35	24	10	36	41	54	15	22	12	1,6	28	139
042083	ASV050ALIS+V	50	9	15	30	45	33	12	45	50	65	16	26	12	1,6	32	-0,2
042084	ASV063ALIS+V	63	9	15	35	50	37	14	50	52	67	16	30	16	1,6	40	-0,6
042085	ASV080ALIS+V	80	11	18	40	60	47	14	63	66	86	20	30	16	2,5	50	200
042086	ASV100ALIS+V	100	11	18	50	70	55	17	71	76	96	20	38	20	2,5	60	312
042087	ASV125ALIS+V	125	14	20	60	90	70	20	90	94	124	30	45	25	3,2	70	656
042088	ASV160ALIS+V	160	14	20	88	126	97	25	115	118	156	36	63	30	4	90	826
042089	ASV200ALIS+V	200	18	26	90	130	105	30	135	122	162	40	63	35	4	90	-
042090	ASV250ALIS+V	250	22	33	110	160	128	35	165	150	200	45	80	42	4,5	90	-0,5
042091	ASV300ALIS+V	320	26	38	130	190	154	40	195	185	250	50	95	55	4,5	90	-1,2

Type: AS



Rear 90° hinge ISO 6431

Code	Item	For cyl. Ø mm	Q	BG	H	I	L	M	N	O	S	R	BQ	G	Weight (g)
040361	AS032ALIS	32	7	20	37	18	8	32	25	41	9	19	26	10	54
040362	AS040ALIS	40	9	32	54	25	10	45	32	52	14	25,5	28	12	136
040363	AS050ALIS	50	9	32	54	25	10	45	32	52	14	25,5	32	12	140
040364	AS063ALIS	63	11	50	75	32	12	63	40	63	14	32	40	16	295
040365	AS080ALIS	80	11	50	75	32	12	63	40	63	14	32	50	16	313
040366	AS100ALIS	100	14	70	103	40	17	90	50	80	22	42	60	20	710
040367	AS125ALIS	125	14	70	103	40	17	90	50	80	22	46	70	25	820
040368	AS160ALIS	160	18	110	154	50	20	140	63	110	26	53,5	89	30	1974
040369	AS200ALIS	200	18	110	154	50	20	140	63	110	26	53,5	89	30	1974