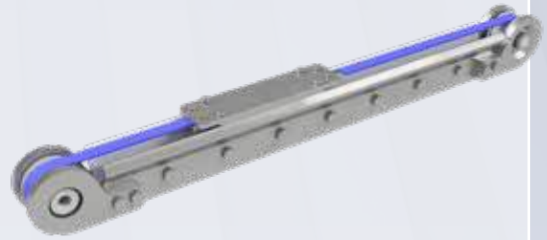


LTi60 SERIES

Robust linear units with
wheel guide in stainless steel
Hygienic design



- Open design, the width of the profile is 55 mm
- Guide system of hardened wheels
- Toothed belt type AT10, in FDA blue version
- Easy to clean
- C45 guide wheel system is very resistant to pollution
- All components in inox mate

TECHNICAL DATA

LTi60-TRB-C45

Maximum stroke*	mm	2.300
Maximum speed	mm/s	1.500
Maximum acceleration	m/s ²	30
No load torque	Nm	0,2
Repeatability	mm	± 0,1
Movement per revolution	mm	200

* longer lengths on request

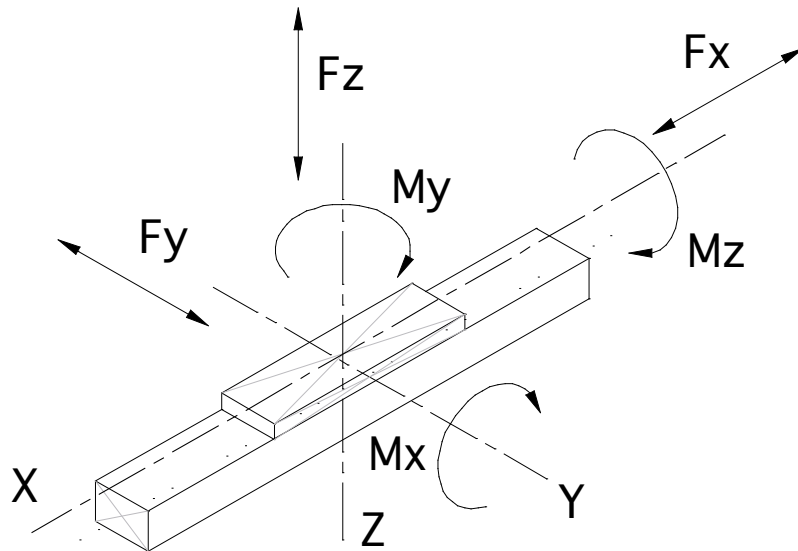
LTi60 SERIES

TECHNICAL DATA

LOAD CAPACITY

LTi60-TRB-C45

Mx	Nm	80
My	Nm	120
Mz	Nm	8
Fx	N	2.100
Fy	N	1.600
Fz	N	860



WEIGHTS (KG)

LTi60-TRB-C45

Unit weight 0 mm stroke	5,00
Weight per 100 mm stroke	0,40
Mass of carriage	0,70

LTi60 SERIES

DIMENSIONS

DIMENSIONS LTI60-TRB-C45

