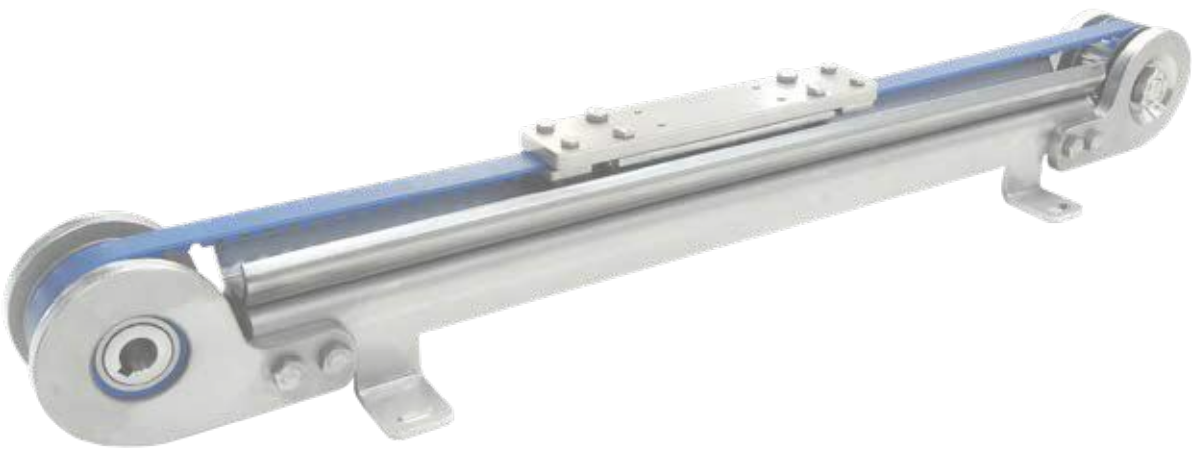
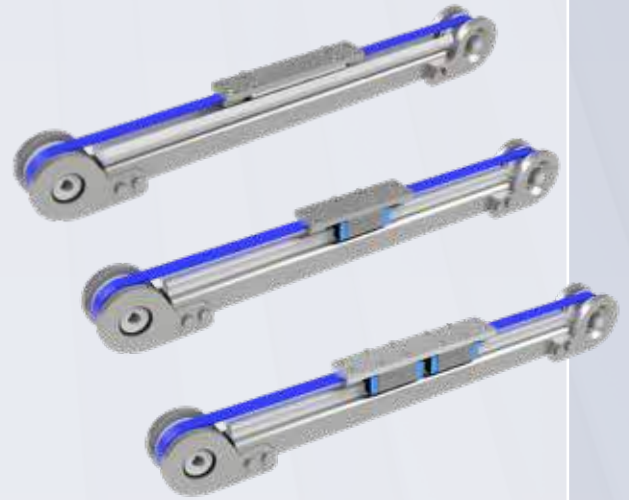


LTi45 & LTi60



LTi45 SERIES

Robust linear units with wheel- or rail guide in stainless steel



- Open design, the width of the profile is 45 mm
- Guide system of hardened wheels or recirculating rail guide, size -20-
- Toothed belt type AT10, 16 mm wide, in FDA blue version
- Double carriage design for high load
- C45 guide wheel system is very resistant to pollution
- Recirculating ball rail guide for heavy loads
- All components in inox mate

TECHNICAL DATA**

LTI45-TRB-C45

LTI45-TRB-S20I

Maximum stroke*	mm	5.500	3.000
Maximum speed	mm/s	1.500	1.500
Maximum acceleration	m/s ²	30	30
No load torque	Nm	0,2	0,6
Repeatability	mm	± 0,1	± 0,1
Movement per revolution	mm	200	200

* longer lengths on request

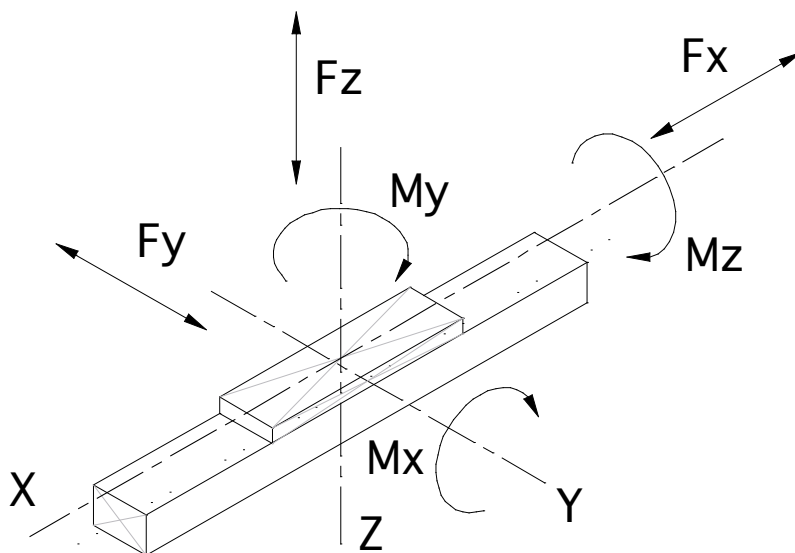
**The values shown are theoretical maximum ratings. A suitable safety factor should always be applied based on application requirements.

LTi45 SERIES

TECHNICAL DATA

LOAD CAPACITY

		LTI45-TRB-C45	LTI45-TRB-S20I	LTI45-TRB-S20ID
Mx	Nm	80	140	680
My	Nm	120	280	560
Mz	Nm	8	140	680
Fx	N	2.100	2.100	2.100
Fy	N	1.600	3.600	8.000
Fz	N	860	3.600	8.000



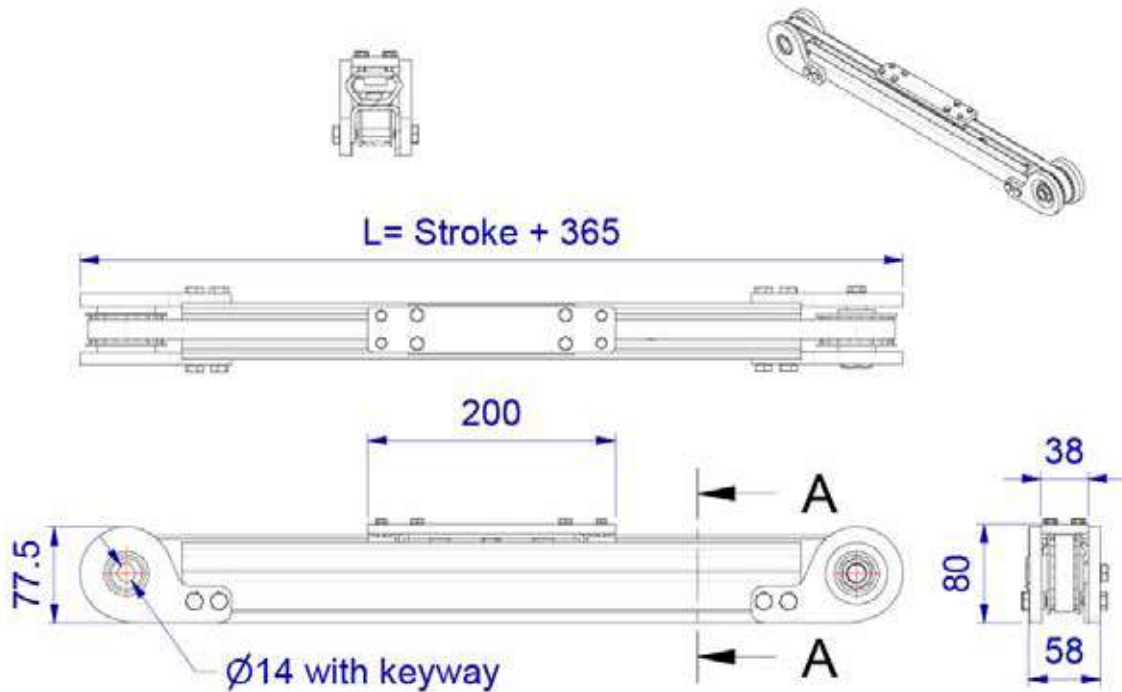
WEIGHTS (KG)

	LTI45-TRB-C45	LTI45-TRB-S20I	LTI45-TRB-S20ID
Unit weight 0 mm stroke	5,00	5,10	5,60
Weight per 100 mm stroke	0,40	0,45	0,45
Mass of carriage	0,70	0,90	1,10

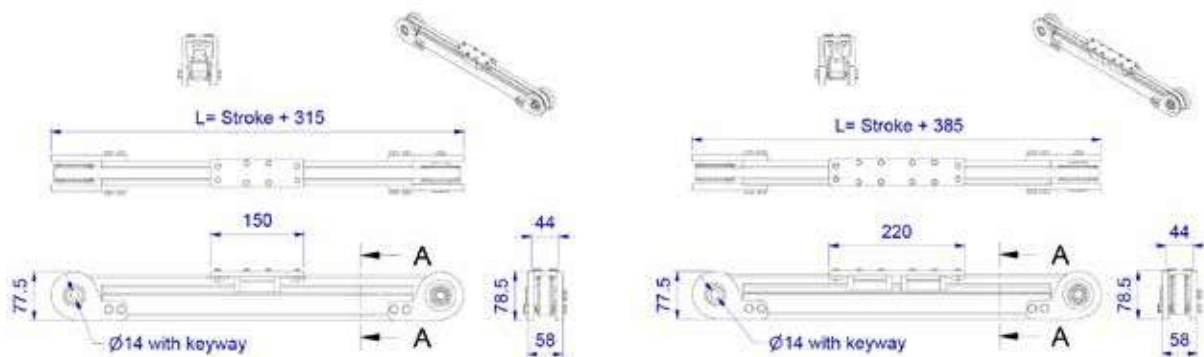
LTi45 SERIES

DIMENSIONS

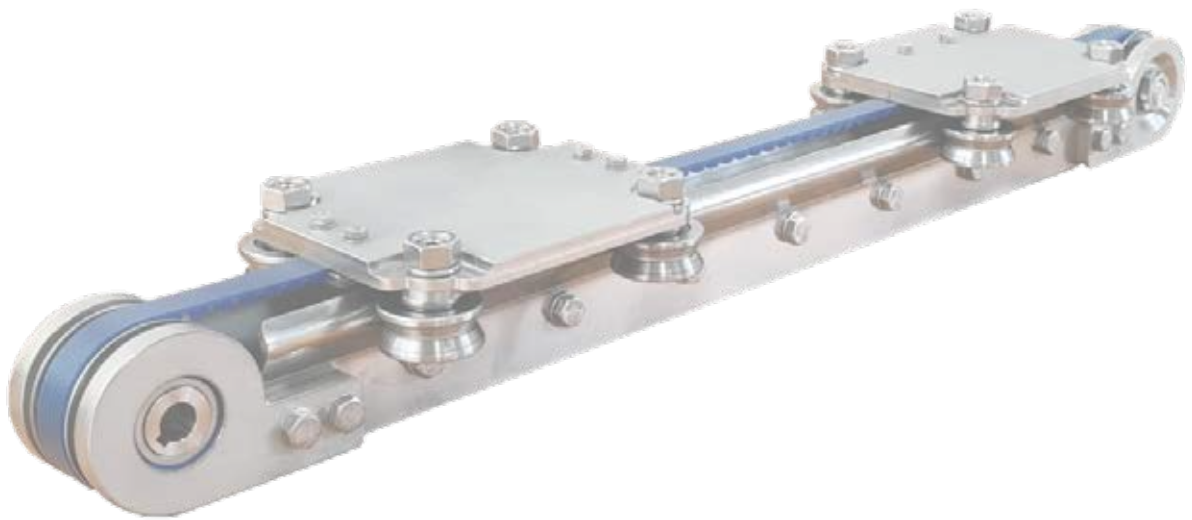
DIMENSIONS LTI45-TRB-C45



DIMENSIONS LTI45-TRB-S20I / S20I-D

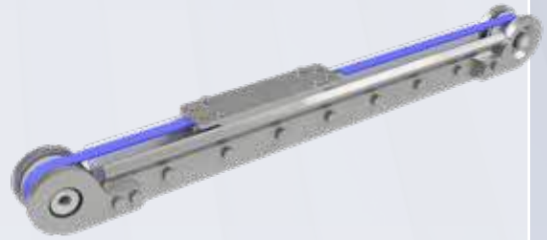


LTi60 SERIES



LTi60 SERIES

Robust linear units with
wheel guide in stainless steel
Hygienic design



- Open design, the width of the profile is 55 mm
- Guide system of hardened wheels
- Toothed belt type AT10, in FDA blue version
- Easy to clean
- C45 guide wheel system is very resistant to pollution
- All components in inox mate

TECHNICAL DATA**

LTI60-TRB-C45

Maximum stroke*	mm	2.300
Maximum speed	mm/s	1.500
Maximum acceleration	m/s ²	30
No load torque	Nm	0,2
Repeatability	mm	± 0,1
Movement per revolution	mm	200

* Longer lengths on request

**The values shown are theoretical maximum ratings. A suitable safety factor should always be applied based on application requirements.

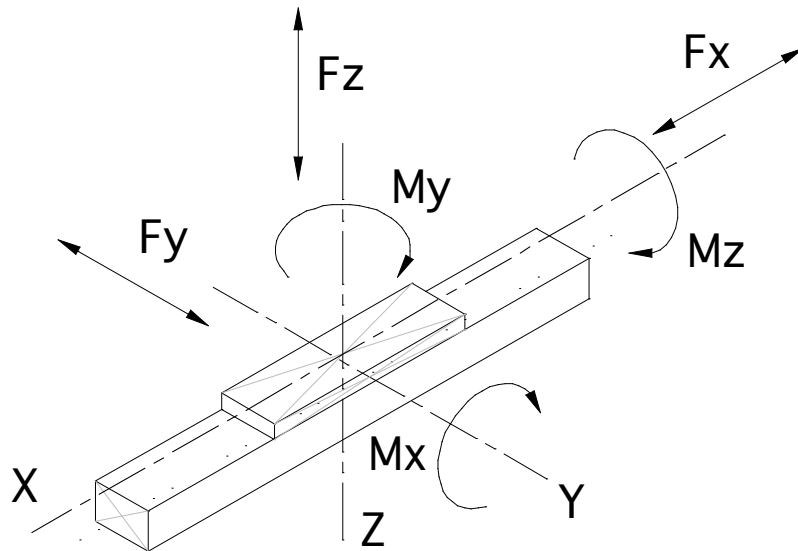
LTi60 SERIES

TECHNICAL DATA

LOAD CAPACITY

LTi60-TRB-C45

Mx	Nm	80
My	Nm	120
Mz	Nm	8
Fx	N	2.100
Fy	N	1.600
Fz	N	860



WEIGHTS (KG)

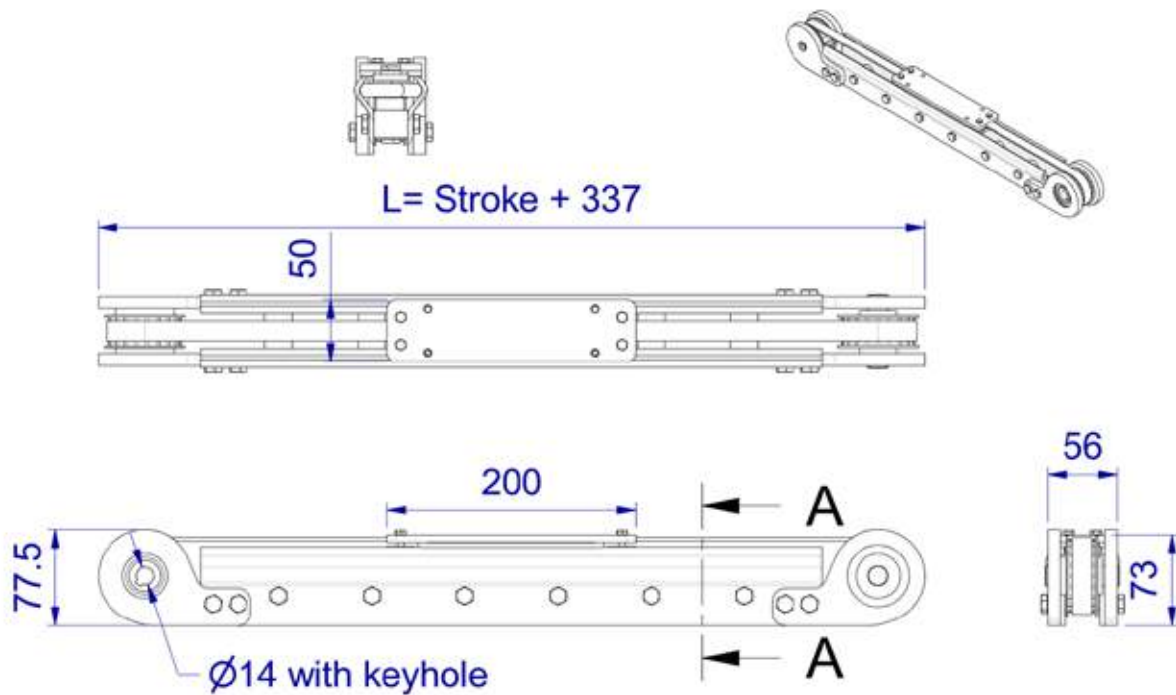
LTi60-TRB-C45

Unit weight 0 mm stroke	5,00
Weight per 100 mm stroke	0,40
Mass of carriage	0,70

LTi60 SERIES

DIMENSIONS

DIMENSIONS LTI60-TRB-C45



ALMOTION B.V.

Nijverheidsweg 14

6662 NG Elst (Gld)

The Netherlands

t +31(0)85 0491 777

e info@almotion.nl

www.almotion.nl