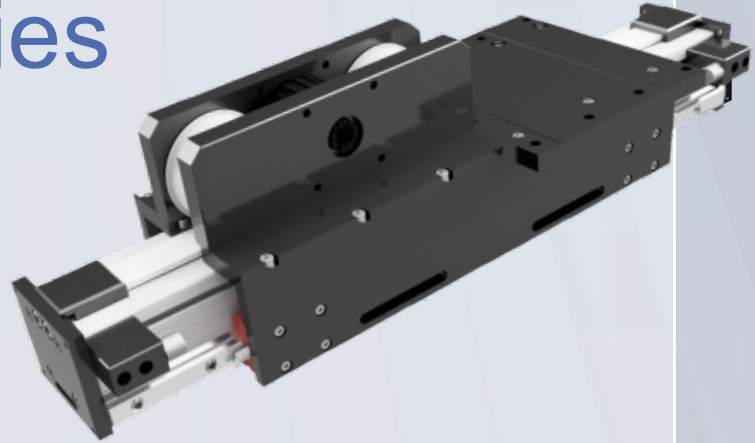


# LTZ80S series

Compact linear units with external rail guide



- External recirculating ball guides size -20- for heavy loads
- Four ballcarriages design for heavier loads
- Toothed belt type 32 AT 10
- Omega belt type; perfect for vertical applications

## TECHNICAL DATA\*

## LTZ80-TR-S20Q

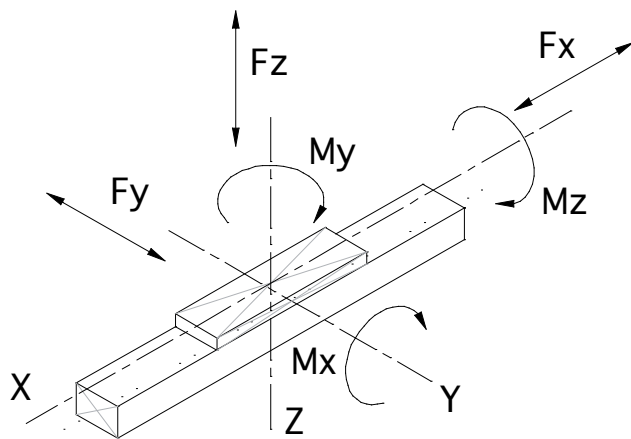
Maximum stroke length	mm	5.750
Maximum speed	mm/s	2.000
Maximum acceleration	m/s <sup>2</sup>	40
No load torque	Nm	0,9
Repeatability	mm	± 0,1
Movement per revolution	mm	200

\*The values shown are theoretical maximum ratings. A suitable safety factor should always be applied based on application requirements.

## TECHNICAL DATA

### LOAD CAPACITY LTZ80-TR-S20Q

Mx	Nm	4.500
My	Nm	4.500
Mz	Nm	620
Fx	N	4.400
Fy	N	5.400
Fz	N	5.400



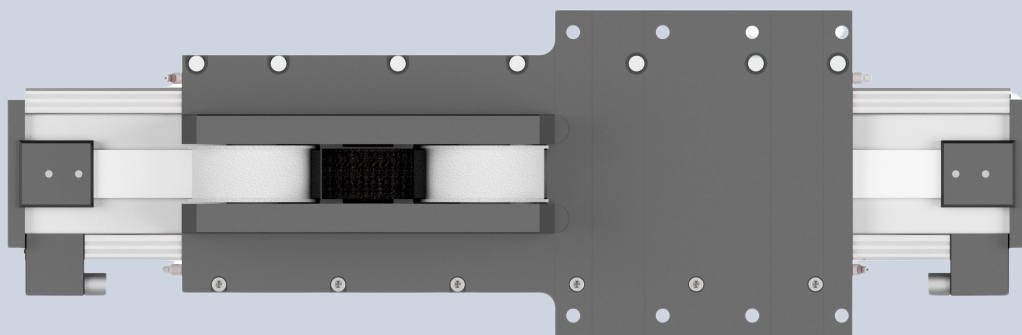
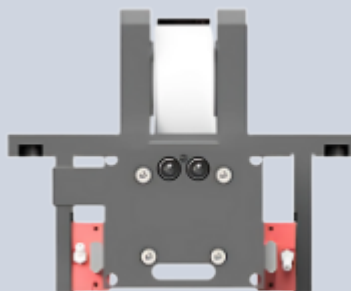
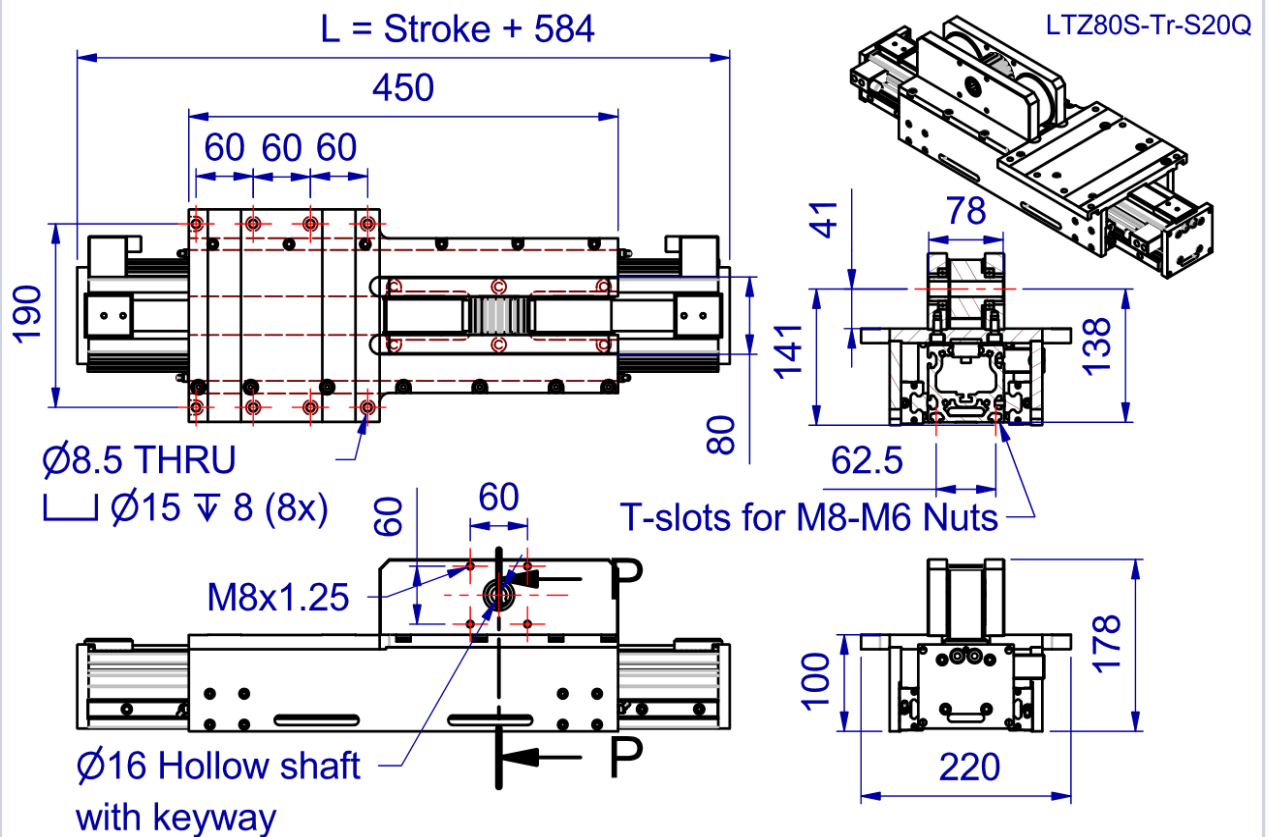
## WEIGHTS (KG)

### LTZ80-TR-S20Q

Unit weight 0 mm stroke	12,40
Weight per 100 mm stroke	0,94
Mass of carriage	6,40

## DIMENSIONS

### DIMENSIONS LTZ80S-TR-S20Q



All drawings can be downloaded from [www.almotion.nl](http://www.almotion.nl)